

# Policy instruments for Smart Specialisation Strategies

## Wielkopolska



Seville, 17 January 2018  
Elizabeth Duda,  
Magdalena Bielazik,  
Kamila Sokołowska

# Questions

1. What could be the effective instrument to increase the number of SMEs running R&D projects and implementing the results of such projects?
2. What could be the most efficient way to use monitoring of RIS3 to design and implement more innovative policy instruments?
3. How to encourage public entities from the world of science to become more involved in commercial activities and cooperation with SMEs?
4. How to support SMEs effectively through BEIs using the demand model?

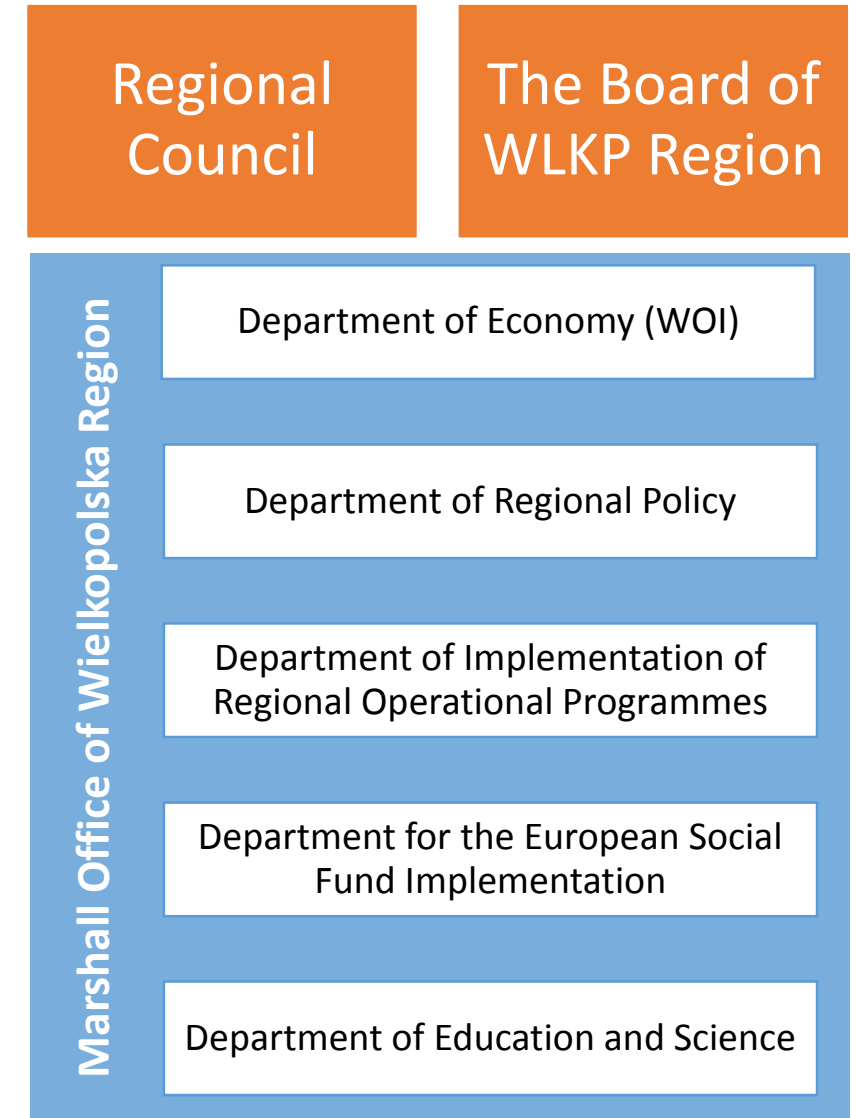
# Overview of our RIS3

---

## Main regional characteristics

- Important industrial centre
- 29,2% of national GVA and growing
- 75% GDP by current market prices
- Modest + Innovator (Regional Innovation Scoreboard)
- Diversified economy: automotive sector, wood technology, logistics, food industry
- Strong presence of academic & R&D sectors
- Poznan Science and Technology Park (first in Poland)

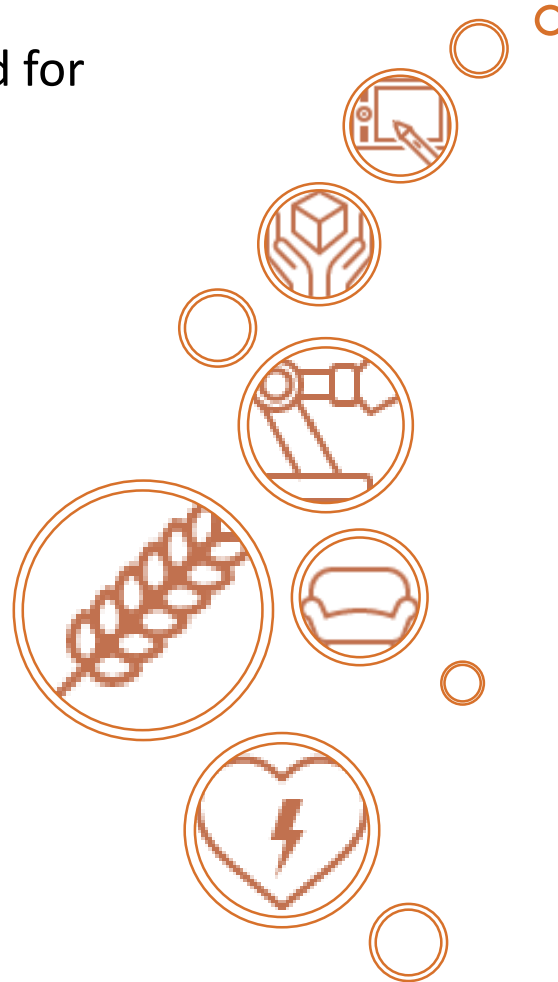
## Managing Authorities



# Our Priorities in RIS3– smart specializations of Wielkopolska

## SMART SPECIALIZATIONS:

1. Bio-based raw materials and food for informed consumers
2. Interiors of the future
3. Industry of tomorrow
4. Specialised logistics processes
5. ICT-based development
6. Modern medical technologies



## STRATEGIC PROGRAMMES:

1. Innovative office
2. Innovative companies
3. Effective business environment institutions
4. Education for innovation
5. Pro-innovative local government
6. Wielkopolska Digital Agenda

# RIS3 implementation

---

## General information

- Total allocated resources amounts to 1.758.614.940 PLN
- Number of published calls for proposals – 48
- Other implementation mechanisms apart from calls – EDP (Entrepreneurial Discovery Process): Wielkopolska Forum of Smart Specializations and working groups who discuss the ways of stimulating entrepreneurship;
- Thanks to numerous indicators we check how our activities in terms of innovation policy influence companies, all the indicators are included in our reports prepared once a year
- We also monitor the position of our region in comparison with others by use of benchmarking

# Policy instruments for the RIS3 implementation

---

The Department of Economy's - pilot actions and initiatives despite ROP

- „Effective Institutions of the business environment – workshops for employees of business environment institutions (BEIs)
- „It's time for business, it's time for changes” – workshops for people willing to start own business with innovative ideas
- „I am an entrepreneur” - workshops held on universities to encourage students to be entrepreneurial
- The Certification Process of Cluster Initiatives – the aim is to create the catalogue of key cluster initiatives in the region and promote existing ones
- Supporting the cooperation between BEIs, science and business sector to develop product or process innovations through innovation brokers
- Business missions - inviting entrepreneurs to fairs, exhibitions and other events promoting entrepreneurship and innovation in the areas of smart specialisations
- Promoting innovative enterprises in the areas of smart specialisations: Award „I-Wielkopolska ”

# Policy instruments for the RIS3 implementation

## Regional Operational Programme for 2014-2020 (WRPO 2014+)

SELECTED POLICY INSTRUMENTS		Strategic programmes of RIS3					
		Innovative office*	Innovative companies	Effective BEI	Education for innovation	Pro-innovative local government	Wielkopolska Digital Agenda
ROP measures	SUPPORT FOR R&D (PI 1a)		X				
	IMPLEMENTATION OF R&D RESULTS (PI 1b)		X				
	INTERNATIONALIZATION (PI 3b)		X				
	INCUBATION OF SMEs (PI 3a)		X	X			
	QUALITY OF BEI SERVICES (PI 3a)		X	X			
	INVESTMENT AREAS (PI 3a)					X	
	GENERAL & VOCATIONAL EDUCATION (PI 10a, 10i)					X	X

Projects under PI 1a and 1b **are obliged** to be consistent with smart specializations areas.

For other calls mentioned above there are some **additional points** for projects relating to smart specializations.

# Policy instruments for the RIS3 implementation

---

## Changes and innovations in policy instruments for the RIS3 implementation

According to RIS3 we focus on support in smart specialization areas:

- Calls (ROP 2014-2020) - extra points through eligibility criteria
- i-Wielkopolska contest connected with RIS3
- Business trips especially for companies in smart specialization areas
- Focus on R&D and cooperation between companies and science
- Increasing the area of BEI specialization
- Institutional support and advice for export technology and organization
- Demand model of supporting incubation (ROP)



# Policy instruments for the RIS3 implementation

---

## Stakeholder engagement in policy instruments design

- Working groups discuss the ways of stimulating entrepreneurship
- Entrepreneurial Discovery Process ongoing since 2014
- in-depth interviews in examination of 3000 enterprises
- Consulting process of WRPO 2014+

## Monitoring & continuous EDP

Monitoring through annual reports enables to control the implementation of innovation policy. Highly important are discussions, as a part of EDP, on Smart Specializations Forum and during meeting of working groups e.g. on:

1. Silver Economy – should it be another smart specialization?
2. Should logistic branch be within smart specializations of the region?

# Summary & next steps

---

- RIS3 defines the regional smart specialization and also indicates priorities in supporting enterprises, in particular SMEs, expansion of the network of BEIs and improving innovation management system in the region.
- Our main policy instrument for the research and innovation priority areas identified in RIS3 is ROP
- Within other policy instruments that we design and implement we don't focus on innovations enough but mostly on the support for entrepreneurship in general
- The question of the real impact of our instruments appears when it comes to the budget that we have available despite ROP
- This year the evaluation of RIS3 will be launched and the updating process is about to start

# 1. What could be the effective instrument to increase the number of SMEs running R&D projects and implementing the results of such projects?

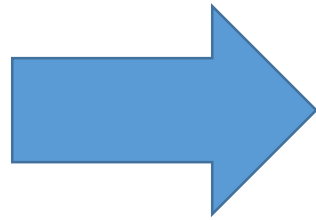
- Wielkopolska Region, according to the Regional Innovation Scoreboard, belongs to the group of „modest innovators”. Although there is around 400 000 of SMEs – around 16% implement industrial innovations) Our support in this area mostly relies on EU Funds within ROP, however we also try to engage the regional financial resources.
- What worked:  
Vouchers for SMEs to cooperate with R&D institutions combined with the brokers' services  
- SMEs were supported in financing R&D cooperation
- What didn't work:  
We don't know if the support directly influences the number of innovative SMEs – the results of cooperation with R&D institutions often appear after many years

## 2. What could be the most efficient way to use monitoring of RIS3 to design and implement more innovative policy instruments?

### What has been done?

Designed and implemented monitoring system:

- it is a part of EDP in Wielkopolska
- coordinated by the Wielkopolska Innovation Observatory
- complex – more than 170 indicators in RIS3, many levels
- in line with the national system:
  - exchange of data etc.



### What are the barriers?

- TIME: it takes too long to see the results and have reliable conclusions
- COMPETENCES : are still building
- PUBLIC ADMINISTRATION CAPACITIES: RIS3 is a huge challenge to coordinate and implement in many regions
- FLEXIBILITY – ROP not always can respond with changes to the conclusions of the monitoring results
- PRACTICE: implementation often successful even if monitoring activities are limited

### 3. How to encourage public entities from the world of science to become more involved in commercial activities and cooperation with SMEs?

**RIS3 Programme: Innovative companies**

**Instrument: Measure 1.1. WRPO 2014+ (IP 1a)**

- Problem: developing joint projects aiming for new innovative solutions for the market-based on a supported public infrastructure
- What has been done?
  - Preferences for projects involving cooperation between science and business sector
  - Preferences for public R&D infrastructure projects with the involvement of entrepreneurs
  - A minimum of 20% of business activity on public R&D infrastructure: division for economic and scientific part of project
  - Monitoring of the business income indicator
  - Project related to infrastructure supported in the previous financial perspective
- What are the barriers?
  - unwillingness of commercializing the product/service
  - low innovative potential of some project ideas (preselection stage)
  - lack of benefits for entrepreneurs to get involved in the project
  - lack of financial resources in research units for own contribution
  - Financial and technical issues

## 4. How to support SMEs effectively through BEIs using the demand model?

**RIS3 Programme: Effective BEIs**

**Instrument: Measure 1.3.1. and 1.3.2. WRPO 2014+ (IP 3a)**

- Problem: effective support for SMEs using the demand mechanism
- What has been done?
  - New support model for SMEs via BEI was created; its phases: 1) BEI prepare support programme 2) MA selects projects, 3) BEI present its offers to companies online 4) BEI recruit companies 5) BEI diagnose SMEs needs and adjust the assistance programme 6) implementation in stages and reporting
- What are the barriers?
  - problematic transfer of infrastructure ownership to entrepreneurs
  - supported start-up should maintain its status for the duration of the project
  - the problem of obsolete infrastructure (especially IT) and the duration of the project
  - lack of funds for the costs of financing BEIs functioning, requirements from BEIs to transform into commercial companies functioning on their own
  - Financial and technical issues

THANK YOU!

FEEDBACK AND CONSTRUCTIVE CRITICISM ARE MORE THAN WELCOME