

Synergies between ERDF and other EU funding instruments



- Who we are
- Our ERDF Program Structure
- Organizing Synergies

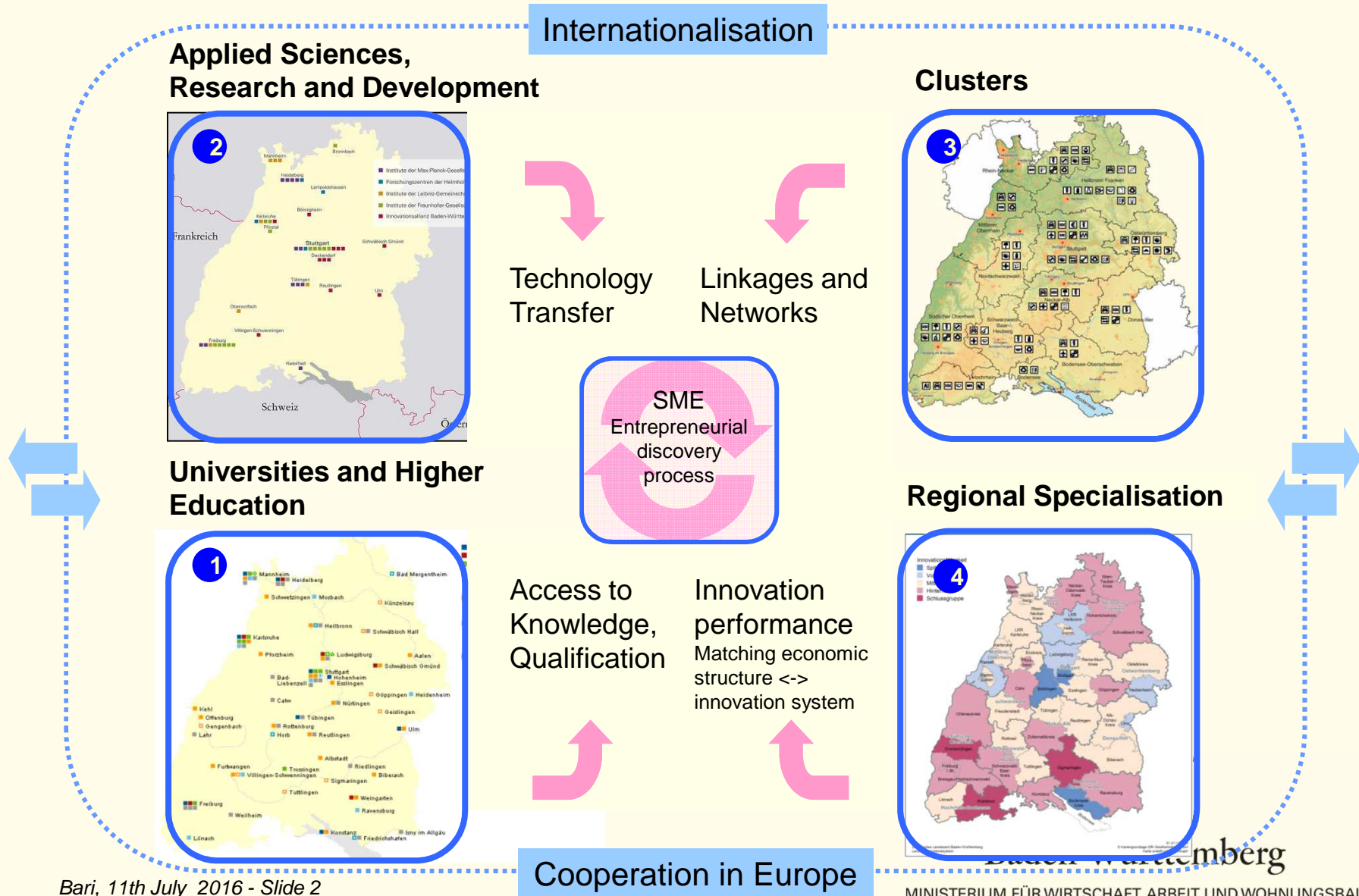
presented by
Magdalene Häberle
Head of Division ERDF Governance



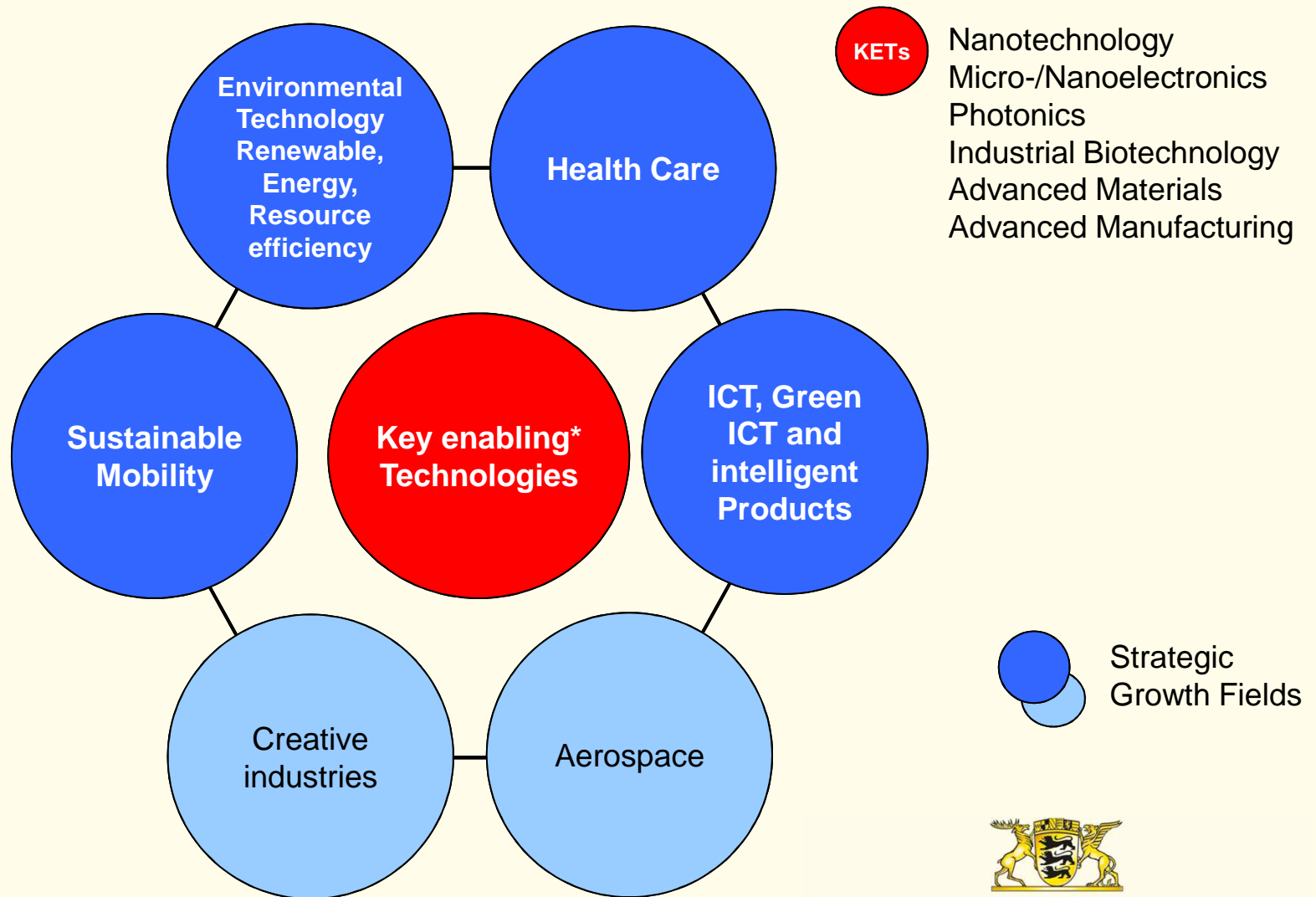
Baden-Württemberg

MINISTERIUM FÜR WIRTSCHAFT, ARBEIT UND WOHNUNGSBAU

Mayor Focus Areas of Innovation Strategy

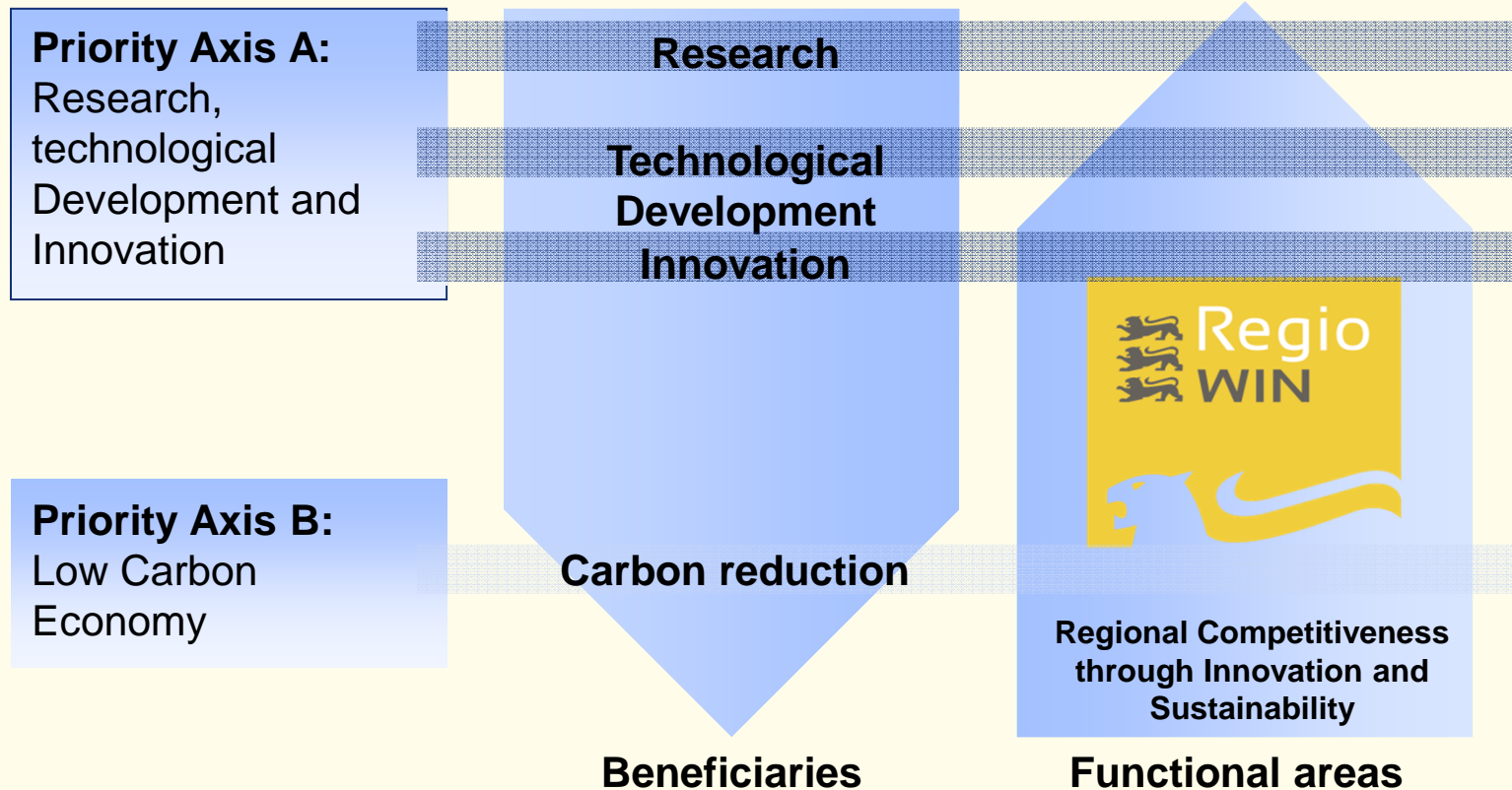


Strategic Growth Fields for Baden-Wuerttemberg



Strategy and Structure of BW Operational Program

Innovation and Energy Transition



Baden-Württemberg

MINISTERIUM FÜR WIRTSCHAFT, ARBEIT UND WOHNUNGSBAU

Synergies established during program planning

Example 1 FET & ERDF

Initial situation: In the fore-run to ERDF programming Baden-Wuerttemberg had several applications running for EU and national Future Emerging Technologies (FET) Flagship-Projects, which will fund research for 10 years

ERDF

Under the Axis A = Research, technological Development and Innovation a specific goal "Research Infrastructure in Top Level Research" was established, which allows to fund the building infrastructure that will house research personnel and equipment for the Flagship project.

Challenges

- Asynchrone decision timeline between FET and ERDF
- Infrastructure planning and building takes time
- Find a specific goal that can be easily adapted if plan does not work out
 - 2 types of Research Infrastructure with similar indicators included ERDF program



Baden-Württemberg

MINISTERIUM FÜR WIRTSCHAFT, ARBEIT UND WOHNUNGSBAU

Synergies established during program planning

Example 2-1 ERDF & ESF



Initial situation: The idea was to establish Start-up-Accelerators to enhance high-tech founding projects in all strategic growth fields for Baden-Wuerttemberg. An accelerator comprises a building to house a comprehensive support and training program for evolving entrepreneurs and space for start-up companies.

ERDF

Under the Axis A = "Research, technological Development and Innovation a specific goal " Support Start-up-Accelerator Infrastructure" was established, which allows to fund the building infrastructure that will house the support program and the start-up businesses.

ESF

Under Axis A = " Promoting sustainable and quality employment and supporting labour mobility " instruments were established that allow to support development of start-up projects with high potential as well as start-up vouchers (Coaching)



Baden-Württemberg

MINISTERIUM FÜR WIRTSCHAFT, ARBEIT UND WOHNUNGSBAU

Synergies established during program planning

Example 2-2 ERDF & ESF



Challenges

Synchronise call for ERDF support for infrastructure and ESF call for development of start-up projects with high potential

- Growth field specific environment necessary for accelerator
- Building infrastructure has longer planning fore-run
- Support of innovative start-up projects is linked to a venue

Intensive coordination between the three relevant divisions

- division for business foundation
- intermediate body ERDF
- intermediate body ESF

Helpful factors

All three divisions

- are located in one ministry
- have a common understanding of the project
- can translate their part into their fund responsibility



Baden-Württemberg

MINISTERIUM FÜR WIRTSCHAFT, ARBEIT UND WOHNUNGSBAU

Synergies made accessible during program implementation

Example 3 ERDF Joining BSR Innovationexpress



What is Innovationexpress?

- Transnational call for proposals for the internationalization of SMEs through cluster initiatives and business networks
- Joint call with Baltic Sea Region, coordinated by BSR Stars (in collaboration with the Nordic Council of Ministers)
- Cluster/network organisation applies to 'home' funding agency (explaining target geography(ies) and activity(ies))...driven by needs of SMEs
- Amount of financing from regional/national programs dependent on regional/national schemes applied



Baden-Württemberg

MINISTERIUM FÜR WIRTSCHAFT, ARBEIT UND WOHNUNGSBAU

Synergies made accessible during program implementation

Example 3 ERDF Joining BSR Innovationexpress



Challenges

- ERDF joins a field-tested format of BSR due to the initiative of cluster policy division
- so far no direct contacts between possibly involved managing bodies: intermediate body acts as "babble fish" between cluster policy requirements, cooperation requirements and local ERDF requirements
- coordination with ERDF managing body: translate the BSR joint call into Baden-Wuerttemberg ERDF conditions
- make sure that common timeline is kept up

→ Looking forward to an interesting experience!

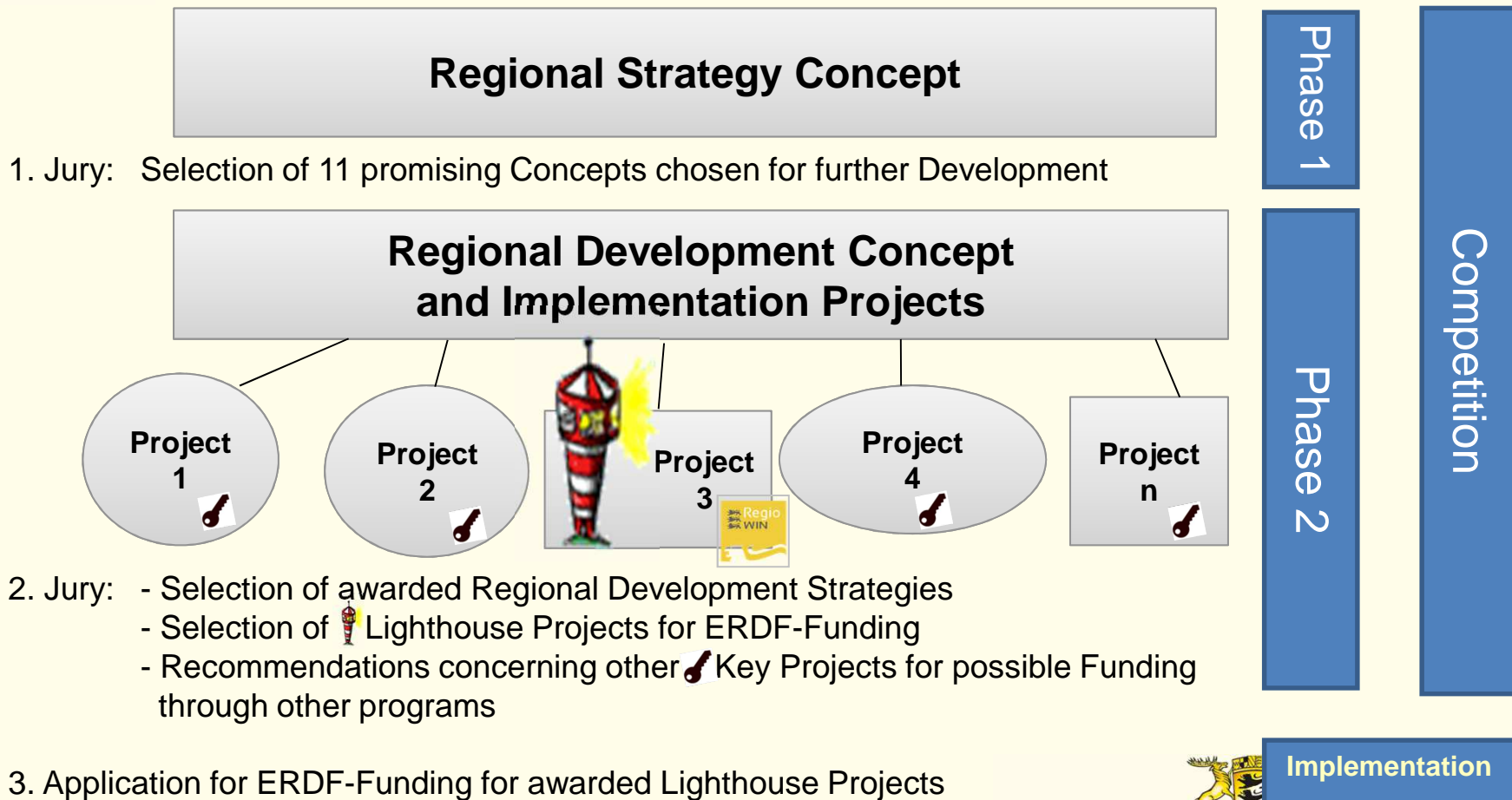


Baden-Württemberg

MINISTERIUM FÜR WIRTSCHAFT, ARBEIT UND WOHNUNGSBAU

Example 4-1

Competitiveness - Innovation - Sustainability



<http://regiowin.eu/> & www.efre-bw.de



Implementation

Baden-Württemberg

MINISTERIUM FÜR WIRTSCHAFT, ARBEIT UND WOHNUNGSBAU

Synergies established during program planning and made accessible during program implementation

Example 4-2 Synergies with Interreg Programs

Transnational Programs with BW participation



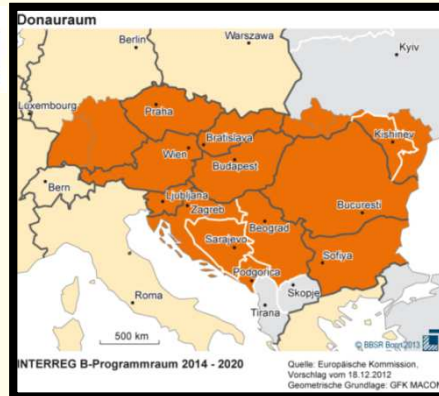
EFRE: 247 MEUR
Co-financing rate: 80 / 85 %



EFRE: 117 MEUR
Co-financing rate: 85 %



EFRE: 202 MEUR
+IPA and ENI
Co-financing rate: 85 %



EFRE: 396 MEUR
Co-financing rate: 60 %

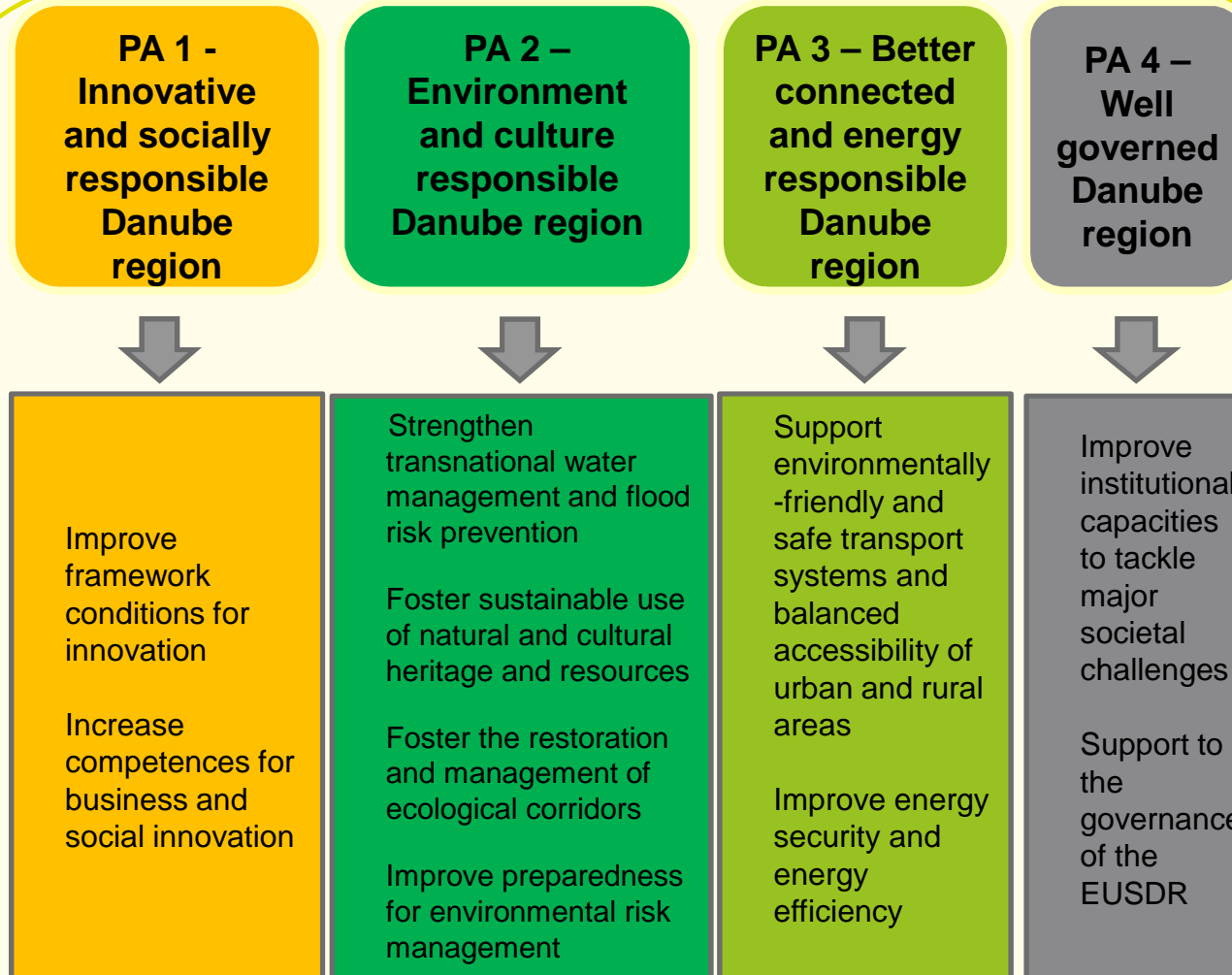
**Common Priorities with ERDF Program:
Innovation & CO2-Reduction**



Baden-Württemberg

Synergies established during program planning and made accessible during program implementation

Example 4-3 Synergies with Interreg Programs (here: Danube region)



- tailor made Interreg information for WINregions
- owners of key projects get in touch with Interreg managing bodies and national contact points (NCPs)



Baden-Württemberg

Synergies established during program planning and made accessible during program implementation

Example 4-4 Synergies with Interreg Programs

Challenges

Development of common orientations, frameworks and strategies during programming of Transnational programs and regional ERDF OP

Success factors

- mutual understanding of program scopes
- trust and common understanding between managing authorities, joint secretariats and national contact points
- active search for points of common interest (win-win-situations)
- joint information events



Baden-Württemberg

MINISTERIUM FÜR WIRTSCHAFT, ARBEIT UND WOHNUNGSBAU

Synergies established during program planning and made accessible during program implementation

Example 4-5 Synergies with Interreg Programs

Success factors

- Make good use of Interreg support structure **National Contact Points**

NCP's are to be set up by each participating country to complement transnational activities of the MA and the JS by involving stakeholders from the national level as well as to contribute to the national and transnational program management.

Main tasks:

- Provide information to potential applicants
- Provide advice to and assist project partners
- Provide information on achievements of the program
- Support program management



Baden-Württemberg

MINISTERIUM FÜR WIRTSCHAFT, ARBEIT UND WOHNUNGSBAU

Conclusions

Funds are servants with limited scope - they help to implement various types of departmental policies

- Know the departmental policies your fund focusses on very well
- Have good and regular communication with the relevant policy divisions
- Know your program limits very well
- Know the difference between national funding options and EU funds in terms of rules and regulations to prevent frustration
- Have good and regular communication between the managing and/or intermediate bodies for various types of funds

→ Synergies can't be forced - timeline is critical

→ Synergies are always indigenous to the local set up of funds

→ Synergies develop with mutual knowledge of needs



Baden-Württemberg

MINISTERIUM FÜR WIRTSCHAFT, ARBEIT UND WOHNUNGSBAU

Thank you for your kind attention!

Magdalene Haerberle

contact: magdalene.haerberle@mfw.bwl.de

<http://wm.baden-wuerttemberg.de/de/wirtschaft/wirtschaftsfoerderung/foerderpolitik-der-eu/europaeischer-fonds-fuer-regionale-entwicklung-rwb-efre/>

www.efre-bw.de

www.regiowin.eu



Baden-Württemberg

MINISTERIUM FÜR WIRTSCHAFT, ARBEIT UND WOHNUNGSBAU