

# Languedoc-Roussillon : Towards a RIS3 strategy



**Vaasa, 14-15 May 2013**  
**Vincent Dufour - Vincent Arsigny**

# Our Expectations from the S3 and the Peer-Review Workshop



## Our expectations from Smart Specialisation

- Define a vision, identifying competitive advantages, setting strategic priorities to maximise the potential of the knowledge-based development of Languedoc-Roussillon
- Insure that all the actors of innovation, research and companies can collaborate together towards a similar goal

## Our expectations for the Peer-Review Workshop

- Get feedback from our counterparts on our process to determine differentiated policies (see below, 4 main questions)
- Take the opportunity of this session to develop cooperation and find partners

# The questions we would like the peer critical friends to discuss



## **1.To share with participants : benefits and disadvantages of “different types of RIS 3”**

- Focused on “niches”
- Or more global, including some “niches”

## **2. To have feedback on “prioritisation process”, and especially : how to take into account the result of benchmarking ? Impact on decisions ?**

- What kind of decision if we have the “same” domains between several regions? We don’t go on? We focus on “niches”? We cooperate to achieve critical mass?

## **3.To have feedback on cooperation strategy :**

- How do other regions in Europe organise the process ?
- What is the operational way (or the different ways) to lead a cooperation strategy?

## **4.To have feedback on articulation between RIS3 and OP :**

- How do the other regions organise the articulation between RIS3 and Operational programs ?

# benefits and disadvantages of “different types of RIS 3” i.e. niche or not

- Should RIS3 be a succession of niches
- Or be a few broad fields comprising smaller niches inside (eventually be changed after a few years)
- Or just let the fields be defined as frames in which the niches can be changed at any time
- or a mixture of large fields (where the Region has a strong position) and niches where the future of the Region economy lies

To have feedback on “prioritisation process”, and especially  
: how to take into account the result of benchmarking ?  
Impact on decisions ?

- What is the balance between competition and cooperation for one given domain. (e.g. health sciences and ICT...)
- Who will decide the leader and the follower(s) if one domain is chosen by two or more Regions.
- Coordination such prevail but how to perform
- choice between one large field in one given Region and a smaller but more appropriate niche in another Region...

# To have feedback on cooperation strategy :

- Once another Region has been identified, how to deal with it ?
- What will be the role / decision of the EU for this cooperation ?
- How to implement the process through all the 6 years of the program ?
- Can the EU manage the discussion for some key domains (ICT & health ; greentechs ; low energy emission building ; ....) ?

# To have feedback on articulation between RIS3 and OP :

- How to deal with H2020 program ?
- There is a need to have more cooperation with project for H2020 and the domain for RIS3
- H2020 is well known for scientist but hard to use for SMEs: RIS3 should help entrepreneur to submit their project with scientist on H2020, but how ?

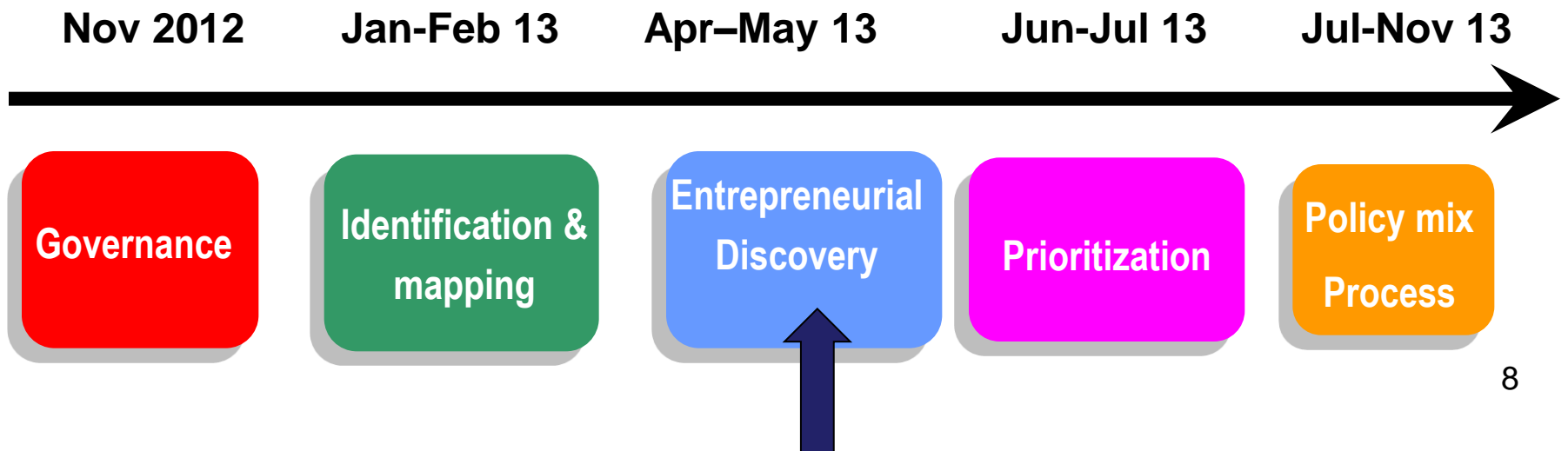
# RIS3 in Languedoc-Roussillon



## Vision :

- High research activity, to move towards economic transformation
- From attractive demographics to economic attractiveness (territory adapted to the new economy)

## Progress of our work on RIS 3 :





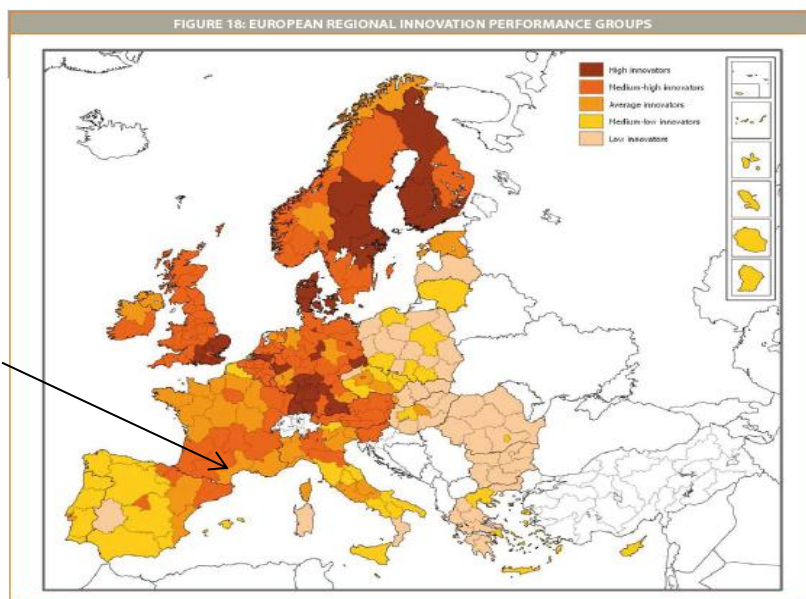
# Basic Facts

- **Population : 2.6 million inhabitants - the highest population growth in France (forecast : 3.3 million inhabitants in 2030)**
- **GDP/per inhabitant : about 75% of EU 27 average (Eurostat – 2011)**
- **Key figures of regional économie :**
  - **Entreprises - Registered businesses : 127,570**
  - **Services : 61,144**
  - **Industry : 12,264**
  - **Construction : 17,849**
  - **Trade and repairs : 36,313**
- **Services : 503,000 jobs**
- **Industry : 70,000 jobs - 8% of jobs**
- **Firm size : SME : 95% < 10 employees**



# Basic Facts

Languedoc –Roussillon: an average innovator region  
(Regional European Scoreboard - 2011 )



To notice : a higher rate of innovative companies than the national rate and also the European rate (Community Innovation Survey 2012 - Eurostat).

## High Education and Public research

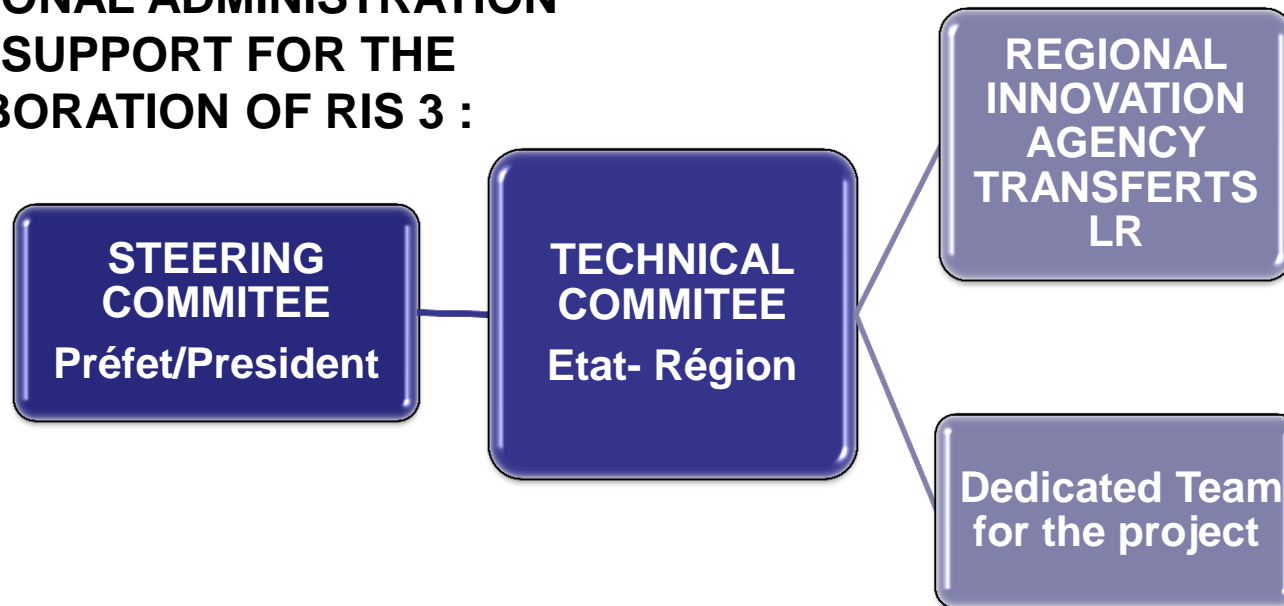
- 5 Universities, 95,000 students,
- 8,000 researchers (5,500 public),
- 10 research organisations
  
- A wide variety of research fields :
  - Agronomy and environmental sciences
  - Health sciences
  - ITC and engineering
  - Chemistry
  - Earth sciences and water
  - Management and humanities



Expenditure of R&D/GDP: 3% (but 2/3 on public funds)

# Governance

**REGIONAL ADMINISTRATION  
AND SUPPORT FOR THE  
ELABORATION OF RIS 3 :**

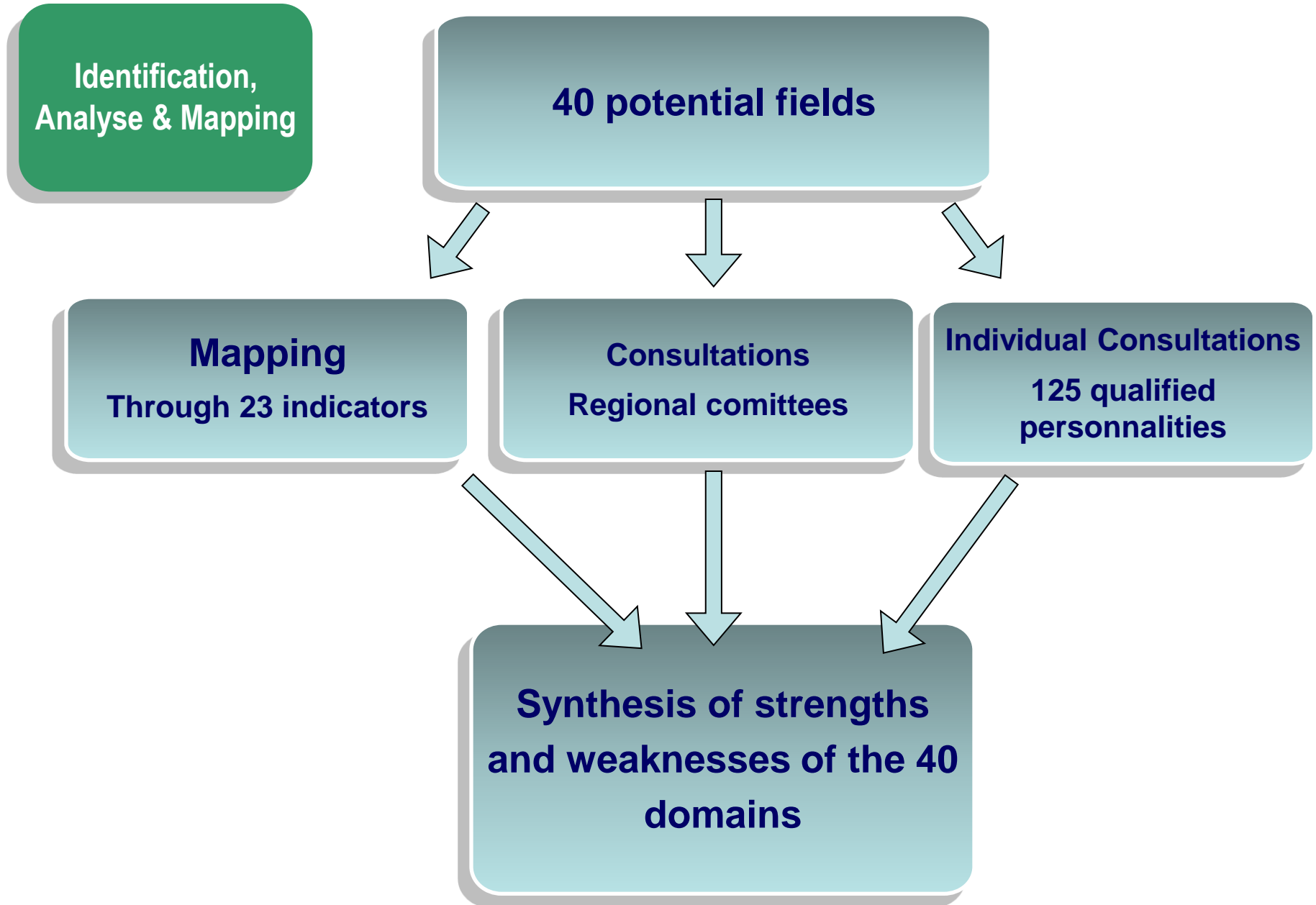


*The quadruple  
helix is already  
involved in the  
consultation  
process  
(see below)*

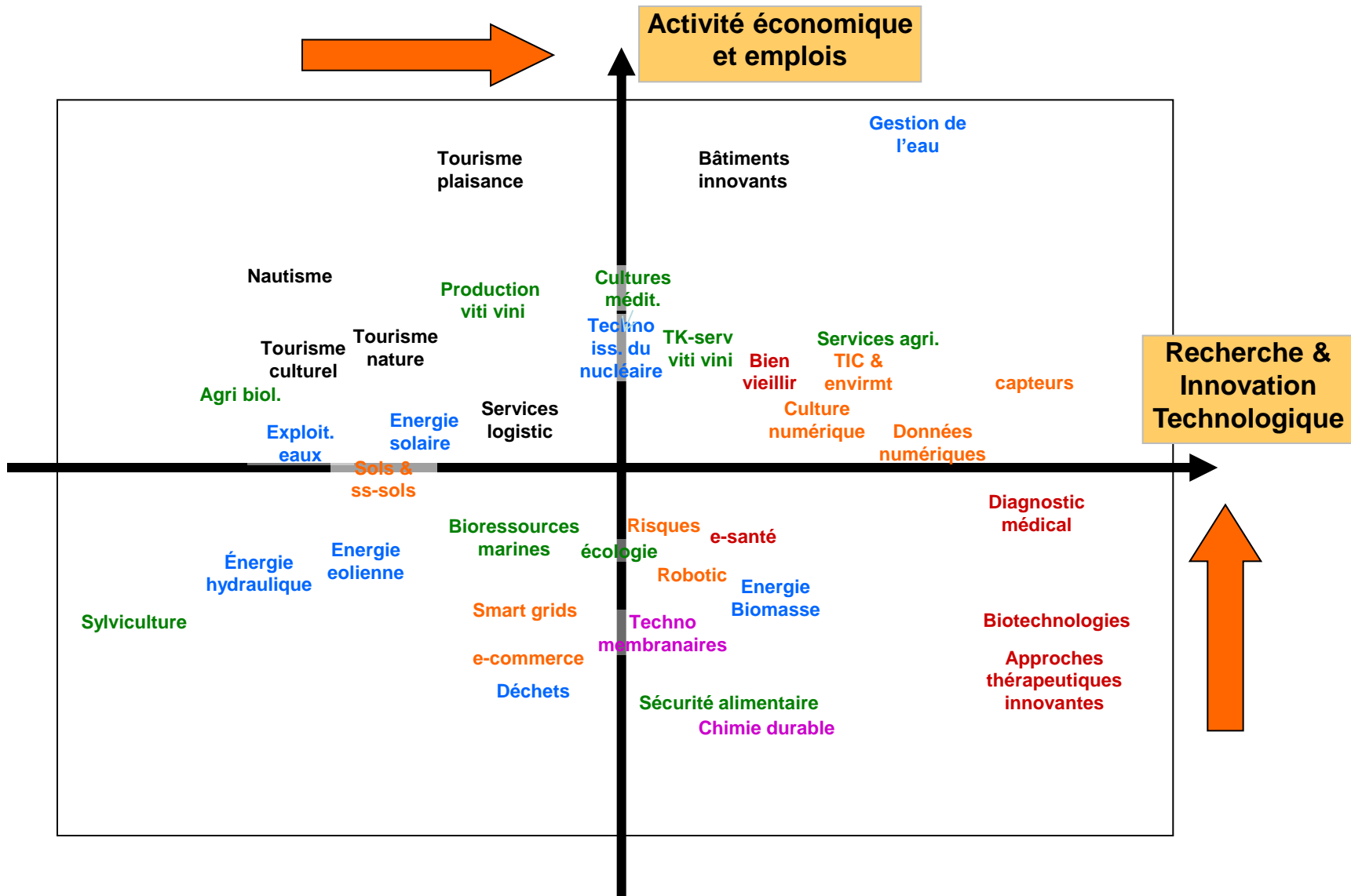
**... AND A NEW GOVERNANCE  
TO BUILD FOR THE  
IMPLIMENTATION !**



# Place-based dimension of the RIS3



# Place-based dimension of the RIS3



# Entrepreneurial dynamics



www.3S-en-LR.com



INVENTER AUJOURD'HUI  
LES DOMAINES D'INNOVATION  
DE DEMAIN

APPEL À CONTRIBUTION JUSQU'AU 15/05.2013

## 3S-en-LR

INVENTER AUJOURD'HUI LES DOMAINES D'INNOVATION DE DEMAIN



ACCUEIL PARTICIPEZ À LA CONSULTATION EN LIGNE CONSULTEZ, COMMENTEZ ET SUIVEZ LES CONTRIBUTIONS

## Participez

Identifiez-vous et participez à cette consultation entre le 2 avril et le 15 mai sur cette page

**1** Avez-vous une idée d'activité(s) nouvelle(s) pour votre domaine/secteur, basée sur la recherche & l'innovation grâce à laquelle le Languedoc-Roussillon pourrait devenir un des leaders européens à 5 – 7 ans ?

- Décrivez votre idée d'activité(s) nouvelle(s).
- Expliquez en quoi elle permettrait de transformer de manière structurelle votre domaine/secteur.
- Expliquez comment elle permettrait au Languedoc-Roussillon de se différencier vis-à-vis d'autres régions.

0 / 1500 caractères maximum autorisés.

**2** Expliquez quelles seraient les innovations\* (ou type d'innovations) attendues et à quelle échéance ?

\* Innovation entendue ici comme : nouveau procédé/produit et/ou services qui trouve son marché à une perspective maximum de 5-7 ans, et susceptible de générer de l'activité économique.

- Détaillez les innovations.
- Détaillez quels seraient les marchés visés.

0 / 1000 caractères maximum autorisés.

**3** En quoi votre proposition présente t-elle une dimension collective ?

- Quelles seraient les entreprises (déjà implantées en Languedoc-Roussillon ou à faire venir) qui, d'après vous, pourraient être les acteurs et les bénéficiaires de votre proposition ?
- Les citer si possible.

PARTICIPEZ À LA CONSULTATION →

CONSULTEZ LES RÉPONSES →

Vous avez besoin d'aide pour construire et formuler votre contribution, contactez :

Agence Régionale de l'Innovation  
Transferts LR

[sri@transferts-lr.org](mailto:sri@transferts-lr.org)

T. 04 07 85 00 40

Pour participer à la consultation et soumettre votre contribution

- Vous devez remplir ce questionnaire, et le terminer en vous identifiant.

- Pour vous aider, nous vous conseillons de consulter [une contribution en ligne](#).

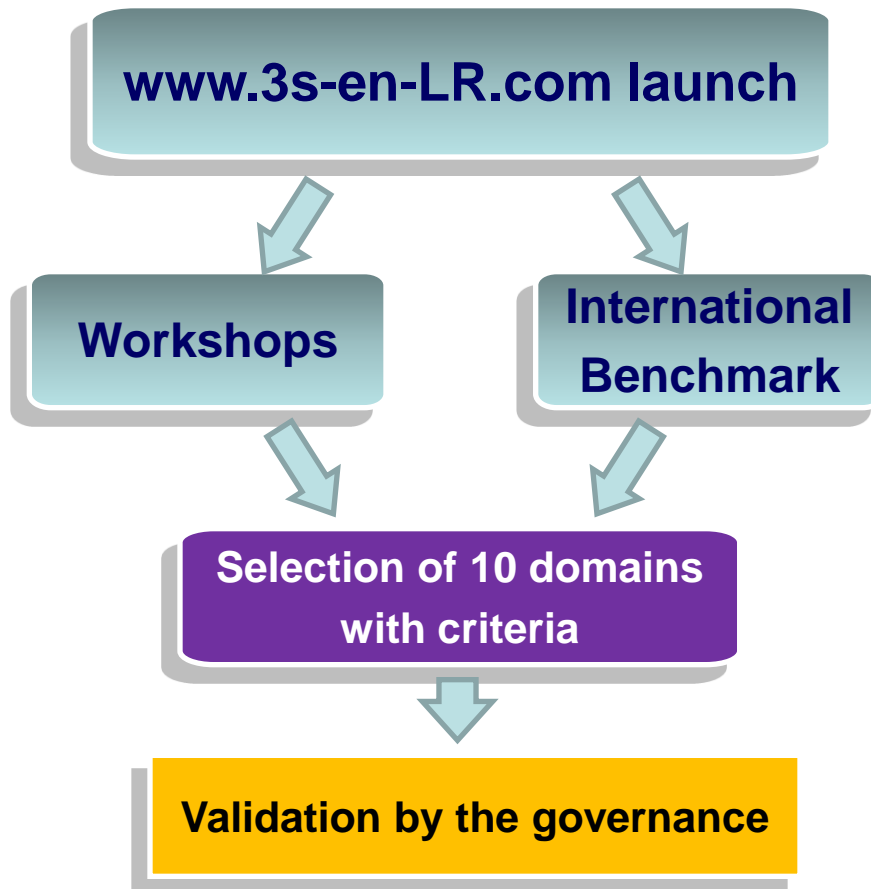
- Si vous souhaitez rester anonyme sur le site (à la publication des réponses au questionnaire et à rajout d'un commentaire) il suffira de le préciser à chaque fois.

- Une fois identifié, vous pourrez vous re-connecter au site avec votre seul e-mail.

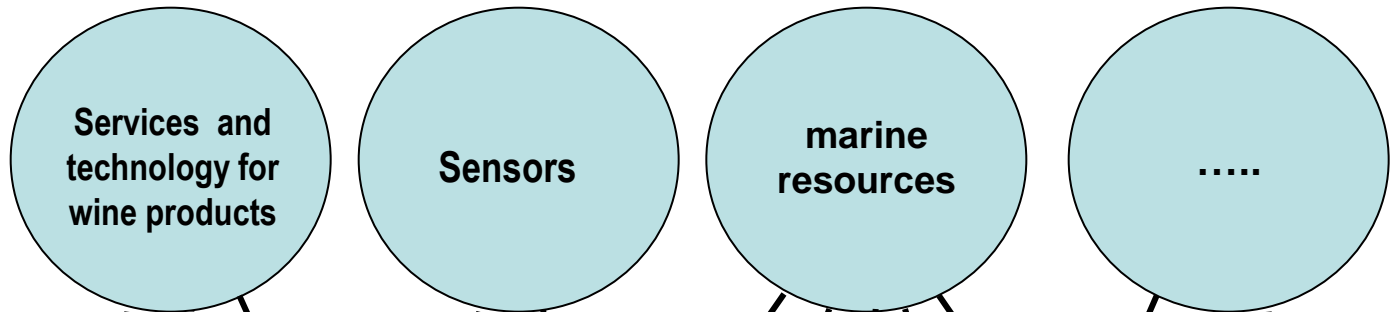
Critères de priorisation 3S

- 1 Impact économique en région
- 2 Potentiel de réelles innovations/applications commercialisables
- 3 Marché national ou international à 5-7 ans
- 4 Transformation de l'activité du domaine à 5-7 ans

# Priorities

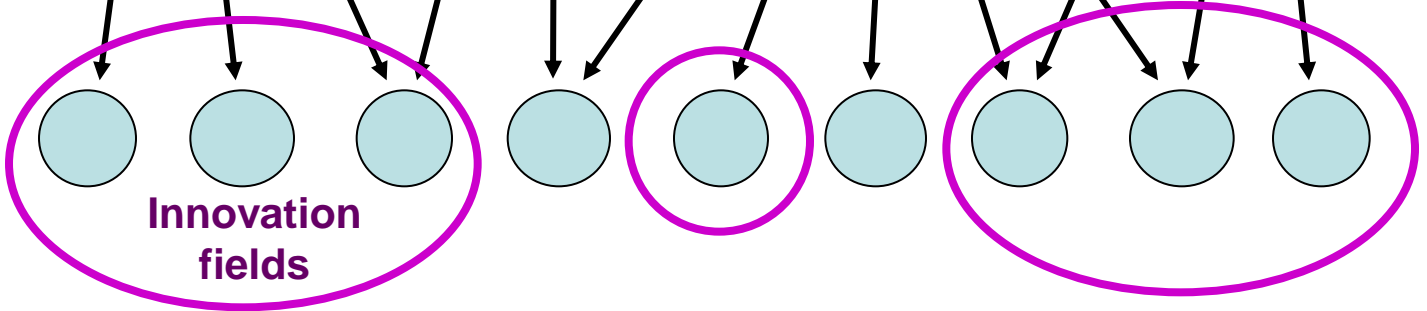


**Analysis and mapping**



10 criteria : economic transformation, differentiation, need for public funds...

**Entrepreneurial discovery**



**Selection**

**Transversal activity: Entrepreneurship**



# Looking beyond our Region's boundaries:



First overview



Workshops

Mapping

Tracks for differentiation

## A European benchmarking in 4 steps (May- June, 2013)

- **Step 1: on each domain, first overview of the European regions positioned (\*international benchmarking for a few domains)**
- **Step 2: presentation(s) during the workshops and discussions with participants**
- **Step 3 : Mapping (positioning LR in value chains)**
- **Step 4 : Tracks for differentiation**

# Priorities

- 10 criteria for the choices
  1. Economic impact for the region
  2. Innovations and commercial applications
  3. National or international market target in 5-7 years
  4. Economic transformation for the activity/ domain in 5-7 years
  5. Creating a common vision from the partners
  6. Activity cross several sectors
  7. Activity that can not be relocated (offshored)
  8. Chance for leadership in Europe in 5-7 years
  9. Need for public funds
  10. Differentiation



# Implementation and Budget



- For each domain: a roadmap to build, a governance, tools and funds
- Articulation between RIS3 and OP
- Some tools to invent and some innovative tools already tested in Languedoc-Roussillon:

## For instance:

R&D collaboration projects, streamlined process

Public R&D platforms open to SMEs.

Regional JEREMIE (Joint European Resources for Micro to Medium Enterprises)

# Focus on Digital Growth Priorities



- **Prioritisation of actions through SWOT analysis**

- Reducing digital divide (network access to 100% population by 2025, optic fibre (digital literacy, e-inclusion, e-health, e-education,..)

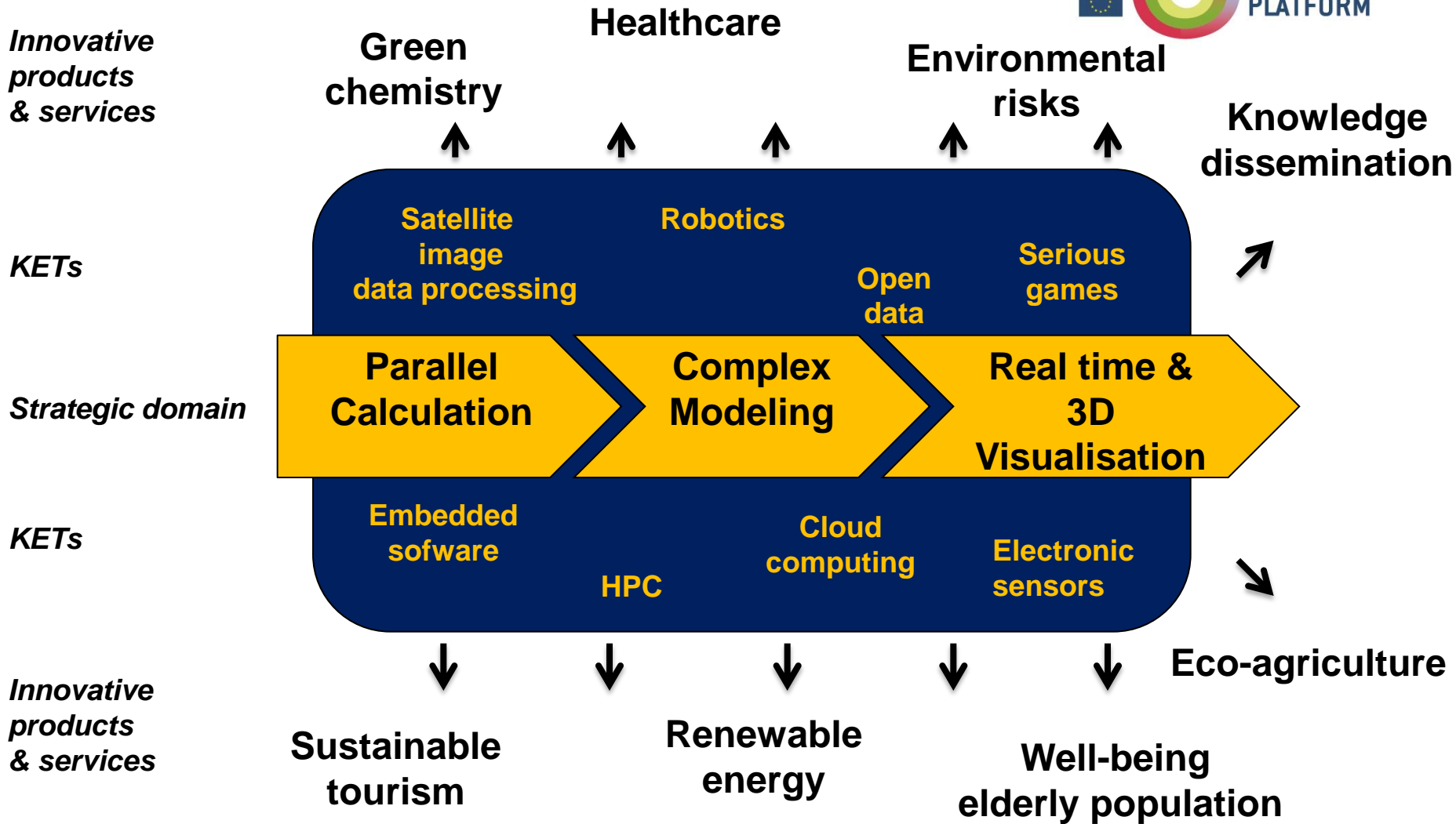


- **Role of ICT in our regional strategic policy framework for digital growth.**

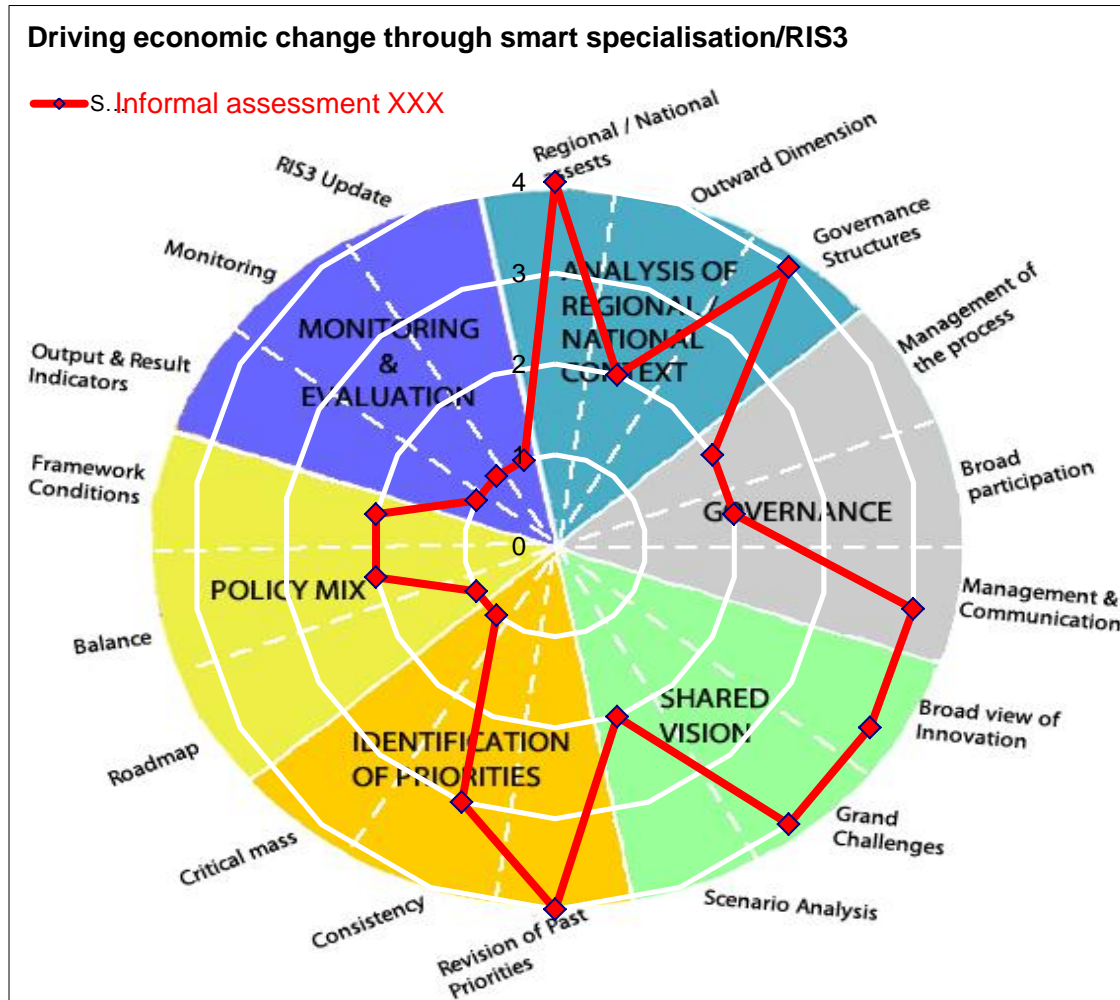
- ICT : a means rather than an end (no large ICT companies)
  - key technologies to support traditional and emerging sectors
  - source of added value at the crossroads of economic activities



# Digital Converging Strategy



# Our self-assessment



Source: S3 Platform/EURADA

# Summary and next steps

- What is needed (in the short and medium term) to develop and implement a good RIS3 in our region:
  - Methodology and roadmap for the implementation, governance and monitoring for each domain
- How aware of the processes and supportive are your politicians, the regional/national administrations, the business community in your region, your national government?
  - National and regional administration very implicated
  - Business and research community also (participation to conference, contributions on 3S-en-LR..)

# The questions we would like the peer critical friends to discuss



## **1.To share with participants: benefits and disadvantages of “different types of RIS 3”**

- Focused on “niches”
- Or more global, including some “niches”

## **2. To have feed back on “prioritisation process”, and especially : how to take into account the result of benchmarking? What kind of impact on decisions?**

- What kind of decision if we have the “same” domains between several regions? We don’t go on? We focus on “niches”? We cooperate to achieve critical mass?

## **3.To have feed back on cooperation strategy :**

- How do the other regions in Europe organise the process?
- What is the operational way (or the different ways) to lead a cooperation strategy?

## **4.To have feed back on articulation between RIS3 and OP:**

- How do the other regions organise the articulation between RIS3 and Operational programs ?