

Partnership for Regional Innovation

PRI – Cities 4.0 extended

Markku Markkula

Vice President of the European Committee of the Regions
President of the Helsinki Region

Taina Tukiainen

Prof. Research Director, Wasa University

Partnership for Regional Innovation

PRI – Cities 4.0 extended



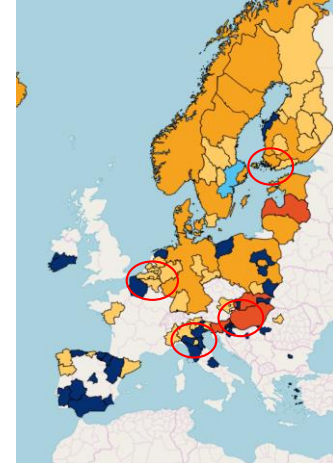
Partnerships for Regional Innovation

Background of Cities 4.0 extended

- Geographical scope, partners, area/s of cooperation, connection with European priorities directionality, objectives, governance, funding sources
- Critical analysis of the PRI Playbook & tools: improve the tools, collect good practices
- Make a synthesis to go from 'innovation ecosystem' mapping to 'socio-ecological system mapping'
- Use the different projects to test the selected and PRI tools; organize the PRI project
- Peer-to-peer learning through interregional collaboration

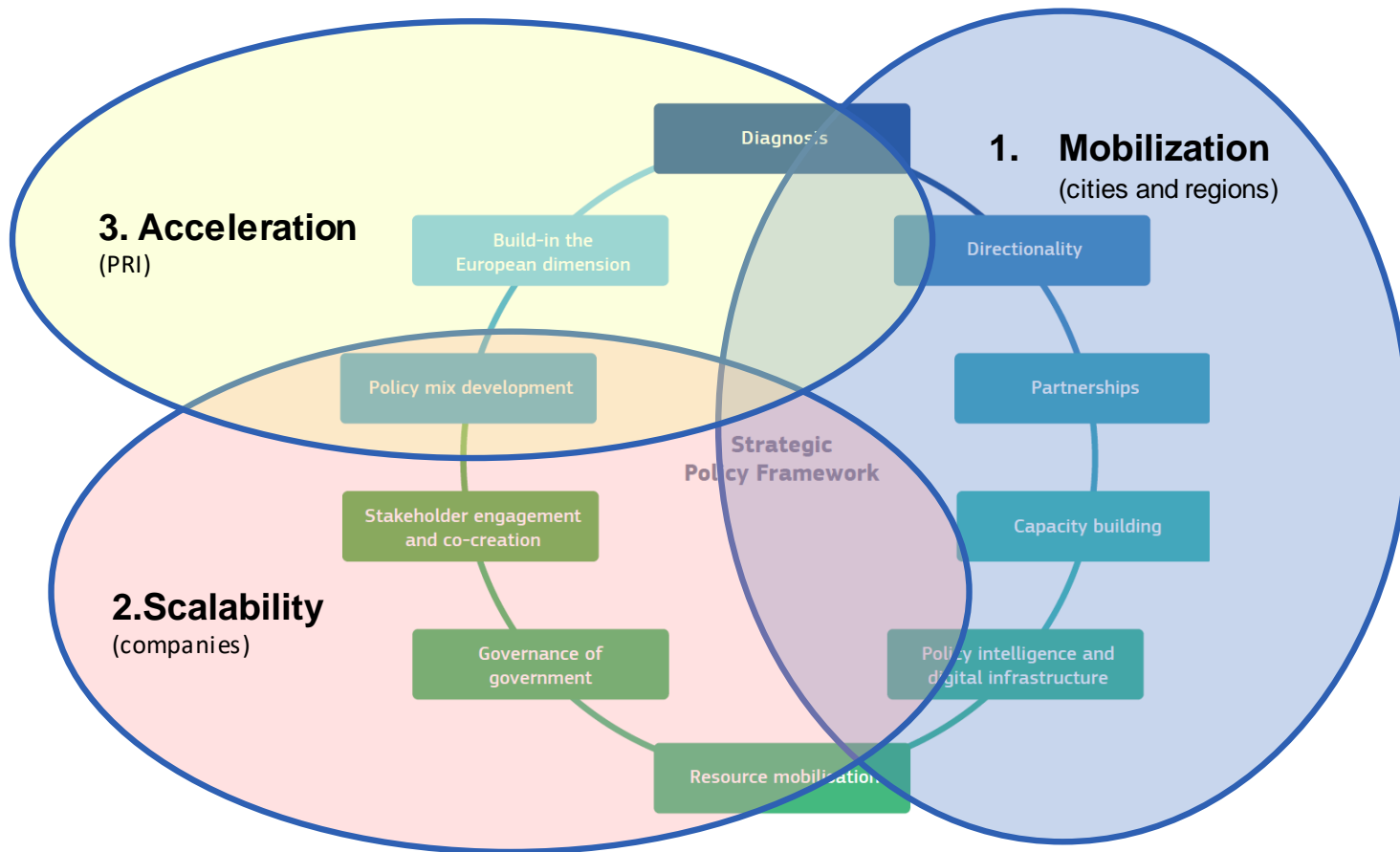
- Eindhoven (NL)
- Espoo (FI)
- Leuven (BE)
- Turku (FI)
- Bologna (IT)
- Cluj-Napoca (RO)

1. **Collaboration on policies and tools accelerating transformation – how to make it happen**
2. **Innovation services & collaboration – how to go forward**
3. **Interregional funding mechanisms – how to fund**
4. **Learnings and next steps**



1. Collaboration on policies and tools accelerating transformation

PRI Pilot: Mobilize, Scale, Accelerate



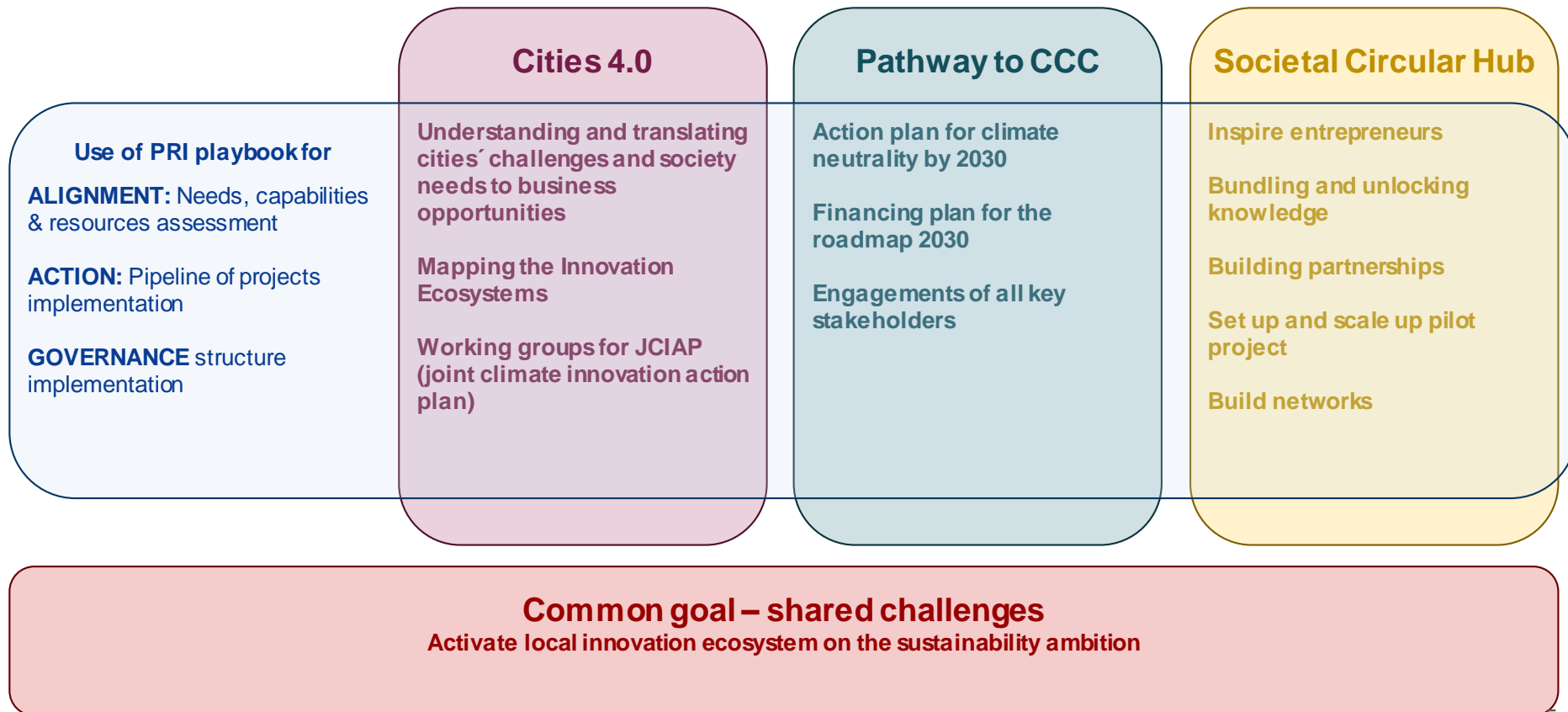
PRI template: City of Leuven - all six cities have made their own

REGION/CITY	Leuven (100,000 inhabitants) is the capital of the Region of Flemish Brabant
TARGET/OBJECTIVE Leuven aims to use PRI to strengthen the European innovation dimension in our work towards a Climate City Contract in the context of the ambition of climate neutrality by 2030	Through the PRI initiative Leuven will focus on: <ol style="list-style-type: none"> strengthening the innovation component of our activities in the EU Mission on climate neutral cities and defining our Climate City Contract, action plan and investment plan considering targeted climate infrastructure innovation contributing to the new European Innovation Agenda; using the PRI contacts and experts in defining our own strategic innovation agenda
CITY PRIORITIES (3) Leuven will use PRI especially in the following activities	When it comes to our climate challenge, Leuven has identified the following key priorities that are linked to innovation in the context of climate action: <ol style="list-style-type: none"> The challenges of our times are that complex that they require new forms of leadership and governance, that embrace complexity in our approaches, that enhance cross-border collaborations on all levels, that foster orchestrated portfolio approaches. The urgent transitions require substantial funding through blended financing. Public funding should be drastically complemented by private capital to be channelled towards cities' deep transformations taking into account risk-return imperatives and the need for social inclusion/justice. Besides mental infrastructures (mindsets) and financial infrastructures, there's also a dominant need for new digital and physical (a.o. energy, mobility, profound circularity) infrastructures that enable urban ecosystems to rapidly shift and switch when circumstances become more favourable, to accelerate when the opportunity arises.
DRAFT ACTION PLAN Leuven foresees the following activities for the first months	<ol style="list-style-type: none"> The city of Leuven will work closely with Leuven Mindgate, the innovation ecosystem partner of the Cities 4.0 project to establish: <ol style="list-style-type: none"> The potential for cooperation between the project and the PRI initiative. We will analyse timelines and propose actions The complementarities between the project and the initiative Facilitate the cooperation between the project partners (Brainport Eindhoven, Leuven Mindgate, Bologna Innovazione and Turku science park) and the cities of Espoo and Cluj-Napoca and their innovation ecosystems. A most important first action will be to ignite the horizontal priorities (above) by launching concrete projects that will lead to tangible and impactful results and -being verticals- generate lessons and buy-in to tackle the priorities. <ol style="list-style-type: none"> Involve academic expertise Create cross-overs with the Cities 4.0 partners Organise triple helix workshops for concrete projects, like the Arenberg Science Park, the Hertoghen site, the Ter Elst neighbourhood and the carbon free mobility.

	<ol style="list-style-type: none"> Engage in the PRI Working groups to contribute to the success of the PRI initiative Use the PRI progress and lessons learned in the process of development of the city's own innovation strategy Engage with the JRC through webinars
CITY TEAM MEMBERS PRI persons (their main focus area and/or responsibility)	<p>Main contact person: Geert Vaes (Cities 4.0 coordinator for Leuven MindGate)</p> <p>Other contacts (tbc)</p> <ul style="list-style-type: none"> Jan Paesen, Director Leuven MindGate Katrien Rycken, Director Leuven 2030 Prof. Koenraad Debackere (Director Leuven Research&Development) Michael Deblauwe (Business Development Manager LRD) Gert-Jan Put (Leuven Urban Studies Institute) Yannick Bormans (ECCOM) Jan Larosse (Adviser)
STATE OF CITY MISSION ROADMAP	<p>Leuven successfully submitted its candidacy to the EU Climate mission. Through 'Leuven 2030', the city and many of its partners from within the regional innovation ecosystem have been working towards achieving the ambitious targets of the City mission.</p> <p>Leuven 2030 has a dedicated programme of actions, jointly developed by stakeholders from the city. Currently the city is developing its Climate City Contract.</p>
OTHER INFORMATION FOR PRI	<p>Leuven Mindgate is a core partner within the Cities 4.0 project and considers the objectives central to its immediate innovation targets. It sees the activities deployed in this project as contributing to the PRI.</p> <p>For Leuven it is important that the link between innovation and the climate challenge is maintained and further developed, not only to bring forward solutions for this enormous challenge, but also to discover opportunities for our future.</p>

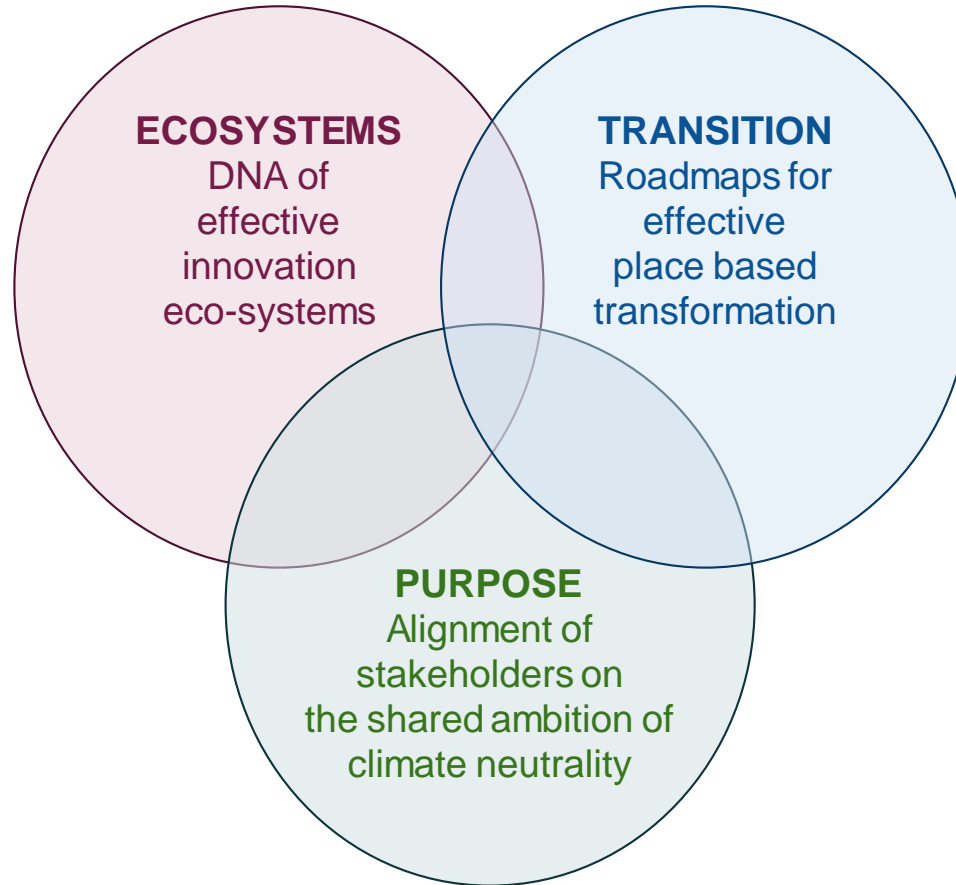
1. Collaboration on policies and tools for transformation

PRI as a lever for transition projects & governance

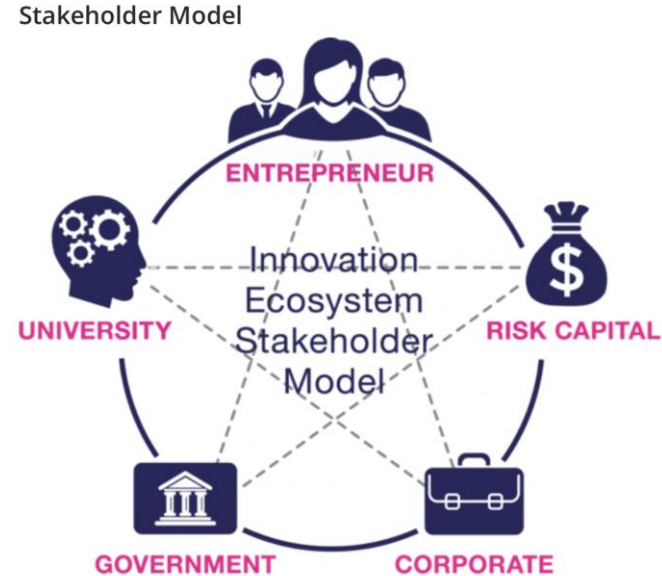


1. Collaboration on policies and tools for transformation

PRI to activate innovation ecosystem and climate transition roadmaps

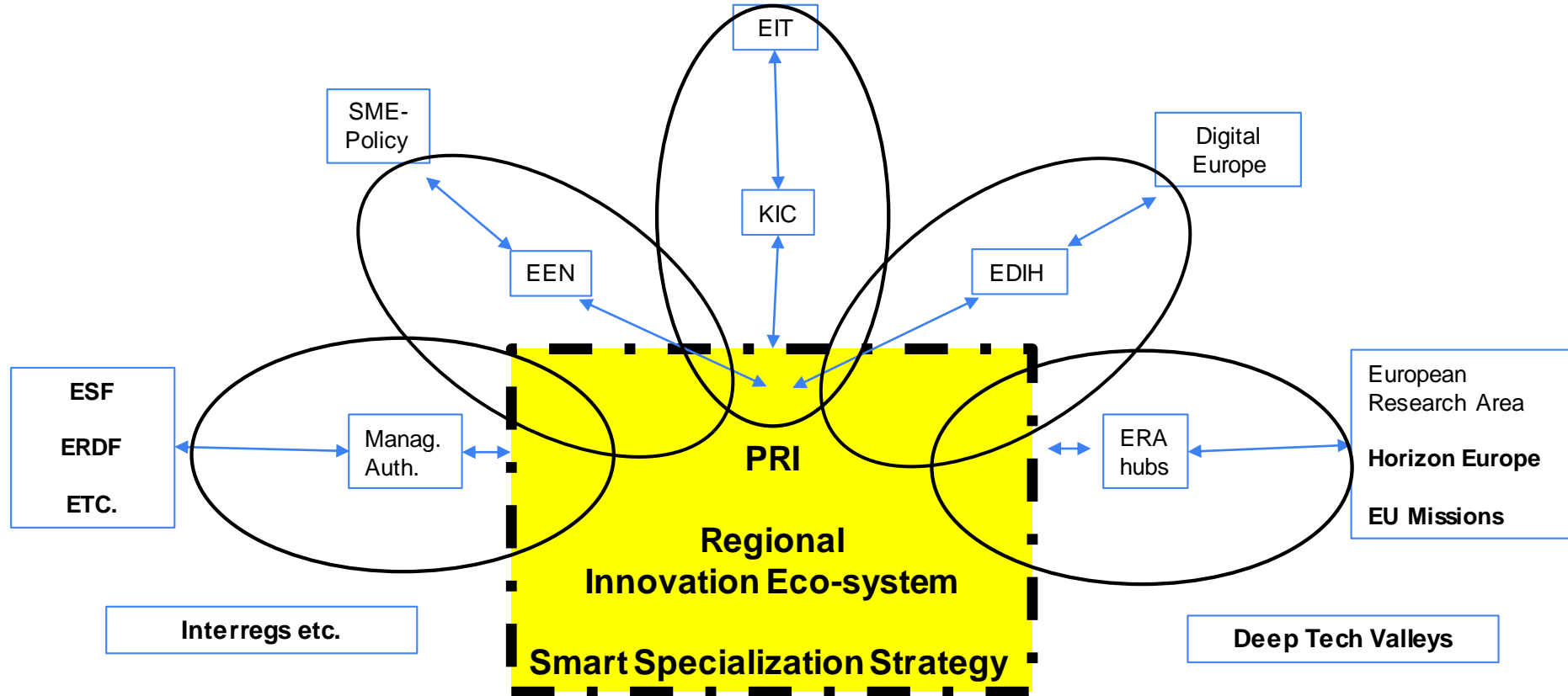


2. Innovation services & collaboration - how to go forward



- Global/EU mindset with regional/city level actions
- Multistakeholder teams in cities including academia, RTOs, businesses
- City template: objective, priorities, action plan, team, mission roadmap, PRI
- Skills & capabilities: city as living lab, transformational labs, innovation camps
- Contractual expertise; academia / researchers; RTOs; clusters and industry associations; innovation centres

3. Interregional funding mechanisms – how to fund



- Interregional collaboration – joint funding – Deep tech Valleys
- Regional/city stakeholders collaboration in the relevant European calls

4. Lessons learned and next steps

- **Grand societal challenges:** Europe is not any more the same as it was a half year ago.
- **Systematic approach & bottom-up** will have an increasing role in all global activities: new structures, processes and methods.
- **New EU practical instruments** are needed to accelerate Green & Digital twinning for transformation to sustainable growth: EU Missions & New European Bauhaus & Innovation Agenda.
- **Societal innovations & entrepreneurship & creativity** are essential.
- **Human capital & Intelligent assets** are critical success factors: individual & team skills and competencies + **bench-learning**.
- **Place-based innovation ecosystems & European partnerships** are the cornerstones.
- **Avoiding Fragmentation:** The only way, that Europe will become the global leader in science, the industrial base, vibrant start-up ecosystems, favourable conditions for innovation, and the talent base.
- **The practical operational work continues with along the strategic line defined, deepening local understanding and commitment and integrating more people locally.**

