



Partnerships for Regional Innovation (PRI)

Third Plenary Meeting

Defining a monitoring and evaluation system for PRI

26 October 2022 | Online

Anabela M. Santos

European Commission, Joint Research Centre, unit B7, Seville, Spain

Joint
Research
Centre

The views expressed are purely those of the author and may not in any circumstances be regarded as stating an official position of the European Commission

Agenda

10:00 - 10:10	Welcome and setting the scene Tanja Hristova, Chair of the commission for Social Policy, Education, Employment, Research and Culture (SEDEC) of the European Committee of the Regions
10:10 – 11:00	Session 1 – Learning from experience in M&E Moderator: Anabela Santos, Team leader, Joint Research Centre, European Commission <ul style="list-style-type: none">• Extremadura (ES)• Zuid Holland (NL)
11:00 – 12:00	Session 2 – Breakout rooms (8 breakout rooms)
12:00 – 12:10	Virtual Coffee break
12:10 – 12:55	Session 3 – Exchange on past experience Moderator: Xabier Goenaga, Head of Unit B7, Joint Research Centre, European Commission <ul style="list-style-type: none">• Presentation of results from breakout rooms• Discussions and exchange
12:55 – 13:00	Conclusion and next steps <ul style="list-style-type: none">• Guia Bianchi, Researcher and Policy Analyst, Joint Research Centre, European Commission• Xabier Goenaga, Head of Unit B7, Joint Research Centre, European Commission

Proposed conceptual framework for Monitoring and Evaluation (M&E)

- Partnerships for Regional Innovation (PRI)
- Rational for PRI
- PRI Building Blocks
- Anatomy of a concept as a framework for Monitoring and Evaluation
- Monitoring & Evaluation system in Policy Cycle
- Traditional versus non-traditional monitoring methodological approaches
- Challenges and the need of new data and indicators

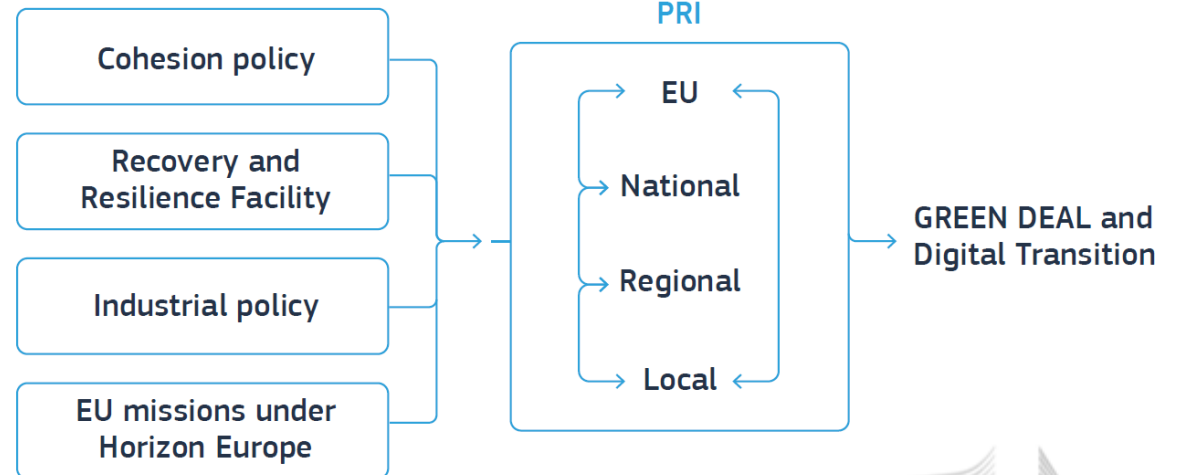
Partnerships for Regional Innovation (PRI)

Pontikakis, D., Gonzalez Vazquez, I., Bianchi, G., Ranga, L., Marques Santos, A., Reimeris, R., Mifsud, S., Morgan, K., Madrid Gonzalez, C. and Stierna, K., Partnerships for Regional Innovation Playbook, EUR 31064 EN, Publications Office of the European Union, Luxembourg, 2022, ISBN 978-92-76-52326-0, doi:10.2760/292307, [JRC12932Z](https://doi.org/10.2760/292307).



- **New strategic framework** for innovation-driven territorial transformation, linking EU priorities with national plans and place-based opportunities and challenges
- Inspired on Smart Specialisation approach and Transformative Innovation Policy
- Impact-based policy for **sustainability**

EU POLICY FRAMEWORK

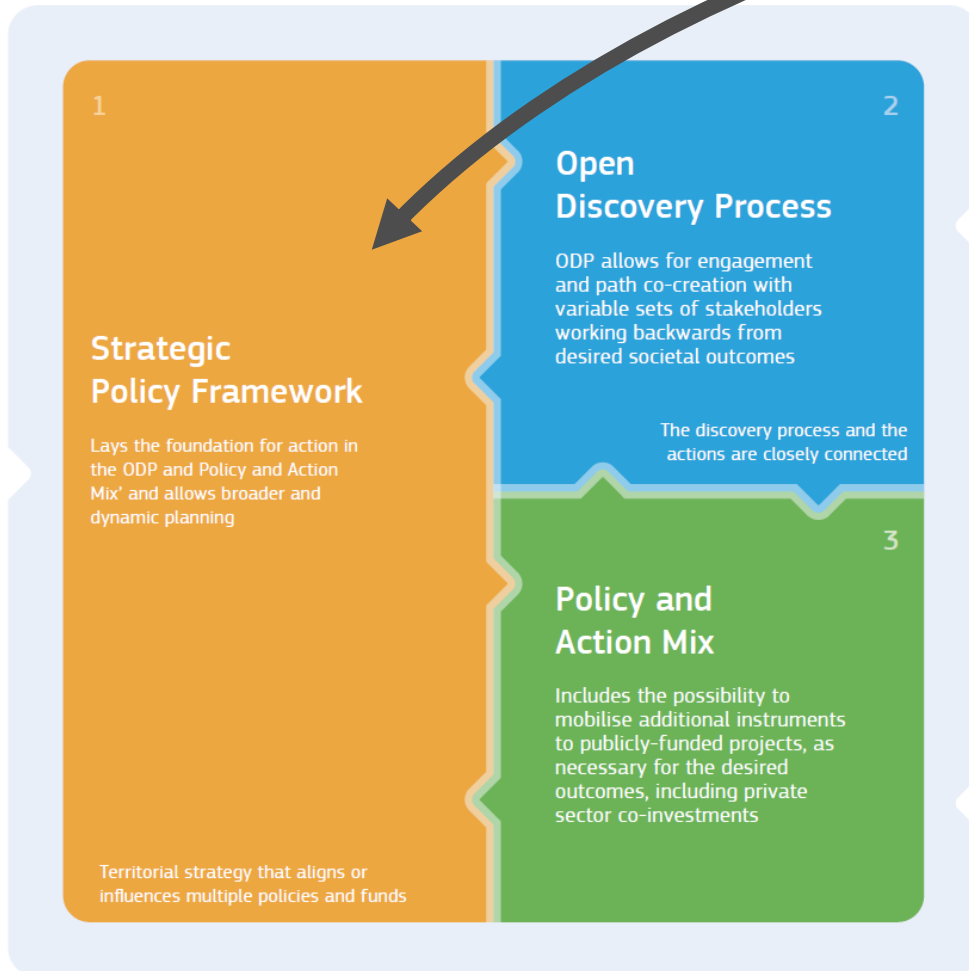


Rational for PRI

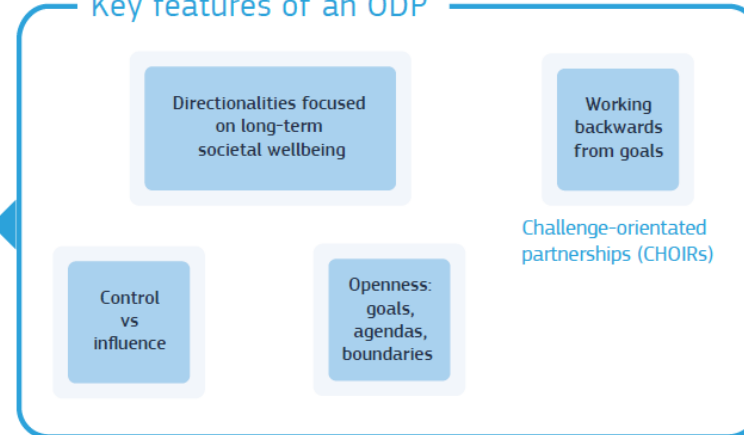
- EU goal to become climate neutral
- **Urgency to address climate change** while **leaving no one behind**
- Traditional Innovation policy approach do not seem likely to support and enhance the necessary transformations to achieve the EU goal
- To stand a fair chance of having the required impact, new innovation policies must address two important prerequisites:
 - Local and regional stakeholders including citizens, enterprises, knowledge institutions, local authorities must be meaningfully involved
 - Policy must strive for transformative, system level, innovation in enabling and accelerating the necessary transformations

PRI Building Blocks

PRI BUILDING BLOCKS

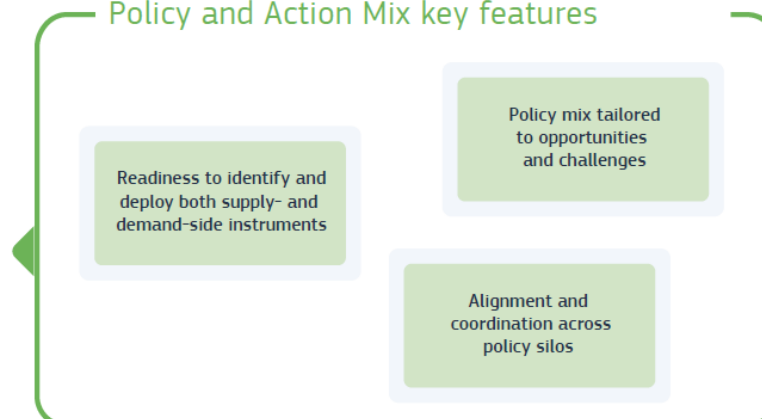


Key features of an ODP



The Open Discovery Process and the Policy and Action Mix are where policy design and implementation actually happen

Policy and Action Mix key features



“Monitoring and Evaluation” is a central element, part of the Policy Intelligence and within the Strategic Policy Framework

Anatomy of a concept as a framework for Monitoring and Evaluation

INNOVATION [TOOL]

- Research and Development and Innovation (R&I) investments as drivers to support the development of more sustainable solutions, products, and services
- Digitalisation is seen as an innovation process and a crucial element for the green transition
- Demand-side innovation policy to allow for a more rapid diffusion (and supporting investments in other policy domains as users of innovation outputs)

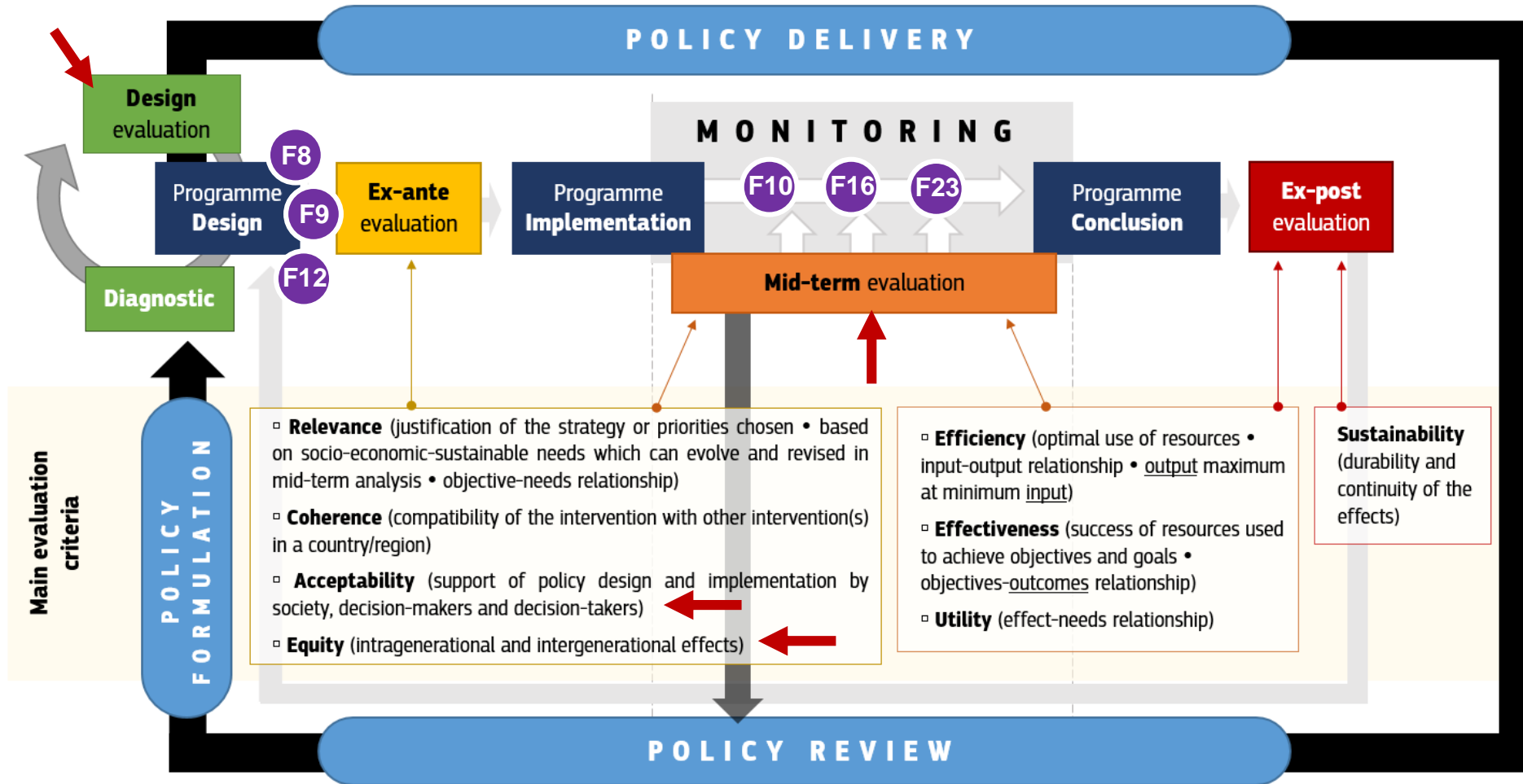
PARTNERSHIP [ENABLER]

- Acting and working together for a common goal
- Action plan and strategy based on synergies and policy mix
- Shared agendas and multi-level governance

SUSTAINABILITY [GOAL]

- Associated with a directionality \Rightarrow Sustainability
- Connected to 3 pillars: economy, society and environment
- Efficient use of natural resources without compromising future generations' needs
- Continuity of the impacts over time

PRI M&E system in Policy Cycle



Tools in the PRI playbook that may support policy cycle:

- F8** Point Review
- F9** Priority compass
- F10** TEDv
- F12** Strategic intervention logic
- F16** Monitoring the SDGs at local and regional level
- F23** Resilience dashboard

Source: Own elaboration based on European Commission (2013) and Shahab et al. (2019).

Traditional *versus* PRI monitoring methodological approaches

SCOPE

Traditional Approach

- Performance-based analysis

PRI Approach

- Impact-based analysis

DIMENSIONS

- Socio-economic dimensions

- Socio-economic and environmental dimensions
- Policy-mix (synergies and complementarities)
- Stakeholders involvement

FOCUS

- Achievements at beneficiary-level
- Static in given period
(e.g. R&I investments, number of subsidized firms, number of employment created by subsidized firms, firms in R&D cooperation between firms or university-firm)

- Multiple-level perspective
- Direct impacts and spillovers at territory-level (desired and non-desired effects)
- Dynamic over time to ensure the continuity of the effects

Challenges and the need of new data and indicators

- The **concept of sustainability** is a composite
- Single goal but with multiple dimensions
- Lack of available data for some dimensions (+) time-lag in data availability for a real-time M&E
- Alternatives:
 - To work in close collaboration with stakeholders/innovation actors for data collection
 - To explore more the data/information in application form (or to design another type of form)
 - To explore **alternative source of data for real-time** M&E (e.g use of data from social media or other web information for sentiment analysis - change in consumers preferences/behavior)

Case studies

2 Case studies

Extremadura (Spain)



RIS³
EXTREMADURA
2027

R&D&I Observatory:
RIS3 monitoring for
Smart Specialisation

Third PRI Plenary meeting – 26 October, 2022

Lucila Castro Rovillard
Extremadura RIS3 Technical Office

Fondo Europeo de
Desarrollo Regional
"Una manera de hacer Europa"

JUNTA DE EXTREMADURA
Consejería de Economía, Ciencia y Agenda Digital

Unión Europea

Zuid-Holland (Netherlands)



Economic Board Zuid-Holland

provincie Zuid-Holland

Groeilagenda Zuid-Holland
www.zuidholland.nl



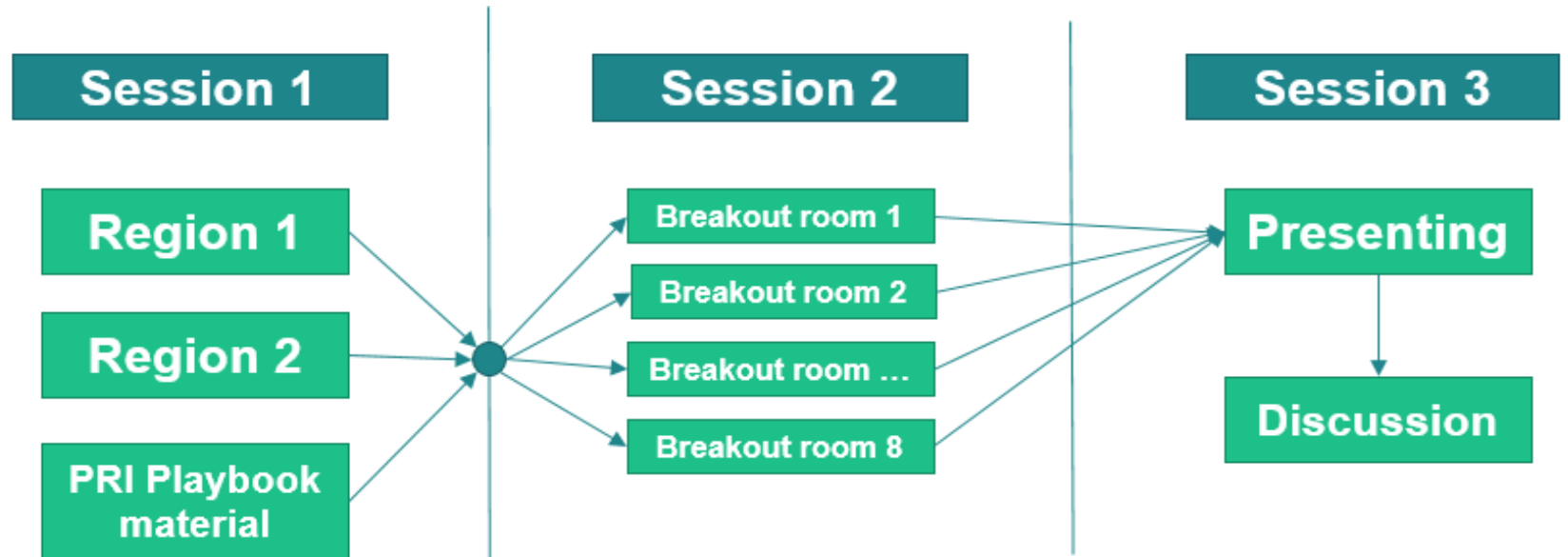
Partnerships for Regional Innovation 26 October 2022

Economic Board Zuid-Holland - Joint Growth Agenda

Jean-Christophe Spapens – Program director Provincial Investment Policy

Breakout rooms

Instructions for breakout room (1/2)



- Description of the current innovation M&E system
- M&E for green transition
- Identified challenges of current M&E system

- Discussion of both presented cases
- In each room: pairs of facilitators, experts, JRC

- Presentation by each breakout room representative
- Moderated discussion of results and takeouts

Instructions for breakout room (2/2)

- Groups 1-4: Extremadura + Zuid-Holland
- Groups 5-8: Zuid-Holland + Extremadura
- Discussion around the challenges highlighted by the 2 regions case studies
- Sharing experience on how to deal with the challenges
- To suggest potential solutions and pathway to upgrade M&E systems for green transition

REMO

Regional Economic Monitoring team

ANABELA SANTOS

Anabela.MARQUES-SANTOS@ec.europa.eu

THANK YOU



© European Union 2022

Unless otherwise noted the reuse of this presentation is authorised under the [CC BY 4.0](https://creativecommons.org/licenses/by/4.0/) license. For any use or reproduction of elements that are not owned by the EU, permission may need to be sought directly from the respective right holders.