

Climate-KIC: regional aspects of climate innovation

Danube S3 Workshop
Gathering opportunities around RIS3 priorities

Vienna, 7 July 2015

Miklós Gyalai-Korpos, PhD
Climate-KIC Central Hungary



About Climate-KIC



Vision: providing the people, products and leadership to address the challenge of global climate change

Mission: creating opportunities for innovators to address climate change and shape the world's next economy.

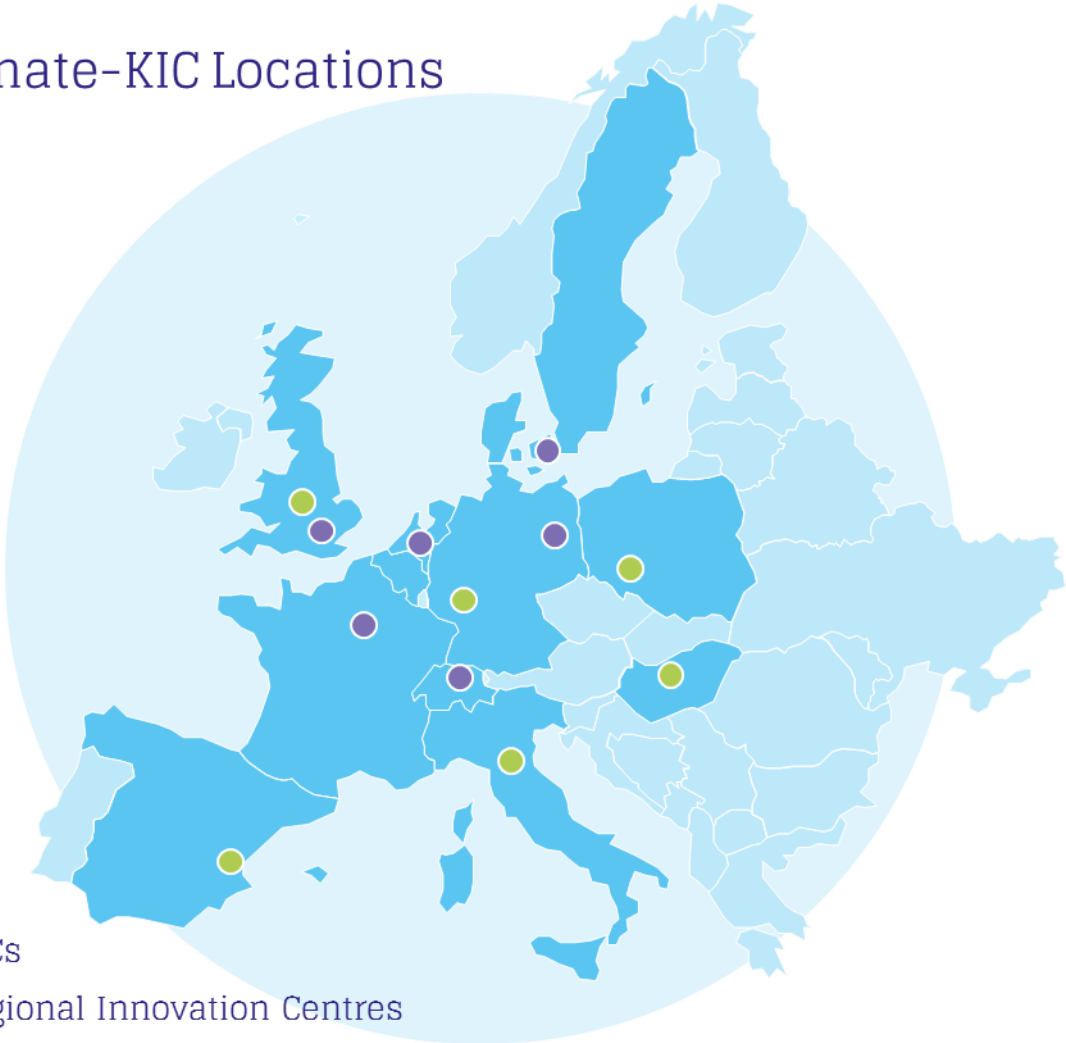
A community of more than 250 partners with a toolkit for promoting **innovation, education and entrepreneurship:**

- An innovation pipeline: sheltered innovation
- Innovation push with demand pull – each corner of the knowledge pyramid
- Mobility programs/PhD/MSc courses
- Start-up incubation

About Climate-KIC



Climate-KIC Locations



From 8 platforms to 4 themes...

Evaluation of thematic areas

Two criteria used:

- 1 Are there barriers that C-KIC can help overcome?
- 2 Does C-KIC have the capabilities to overcome these barriers?

Selected thematic areas

Sustainable city systems

Sustainable land use systems

Sustainable production systems

Climate management finance

Activities



Innovation
Entrepreneurship
Education – PiP

Outreach

Climate-KIC SOLSUN

- How to transfer old and inefficient street light into future proof smart solutions with easy retrofit?
- Street lighting infrastructure as the backbone of smart city
- Proven technology: pilot in Norfolk, UK – 50% saving
- Aim: Budapest pilot, application/sensor platform development, global roll-out
- Link to smart city initiatives in Danube Region?



Entrepreneurship: accelerator

- Generate climate start-ups and let them grow faster internationally
- Mission: supporting the implementation of innovative, startup ideas, which – besides producing profit – benefit society
- Preparing the startups for the reception of venture capital investment
- Coaching with additional services, grants up to 20 000 €



Pioneers-into-Practice (PiP)



*“Put the right people, in the right environment to make the right coincidences”
(EIT innovation principle)*

- Understand the main systemic challenges and support the development of potential solutions
- Promote interaction of existing front-runners and future project leaders
- Maximise the benefits of the transition for local places

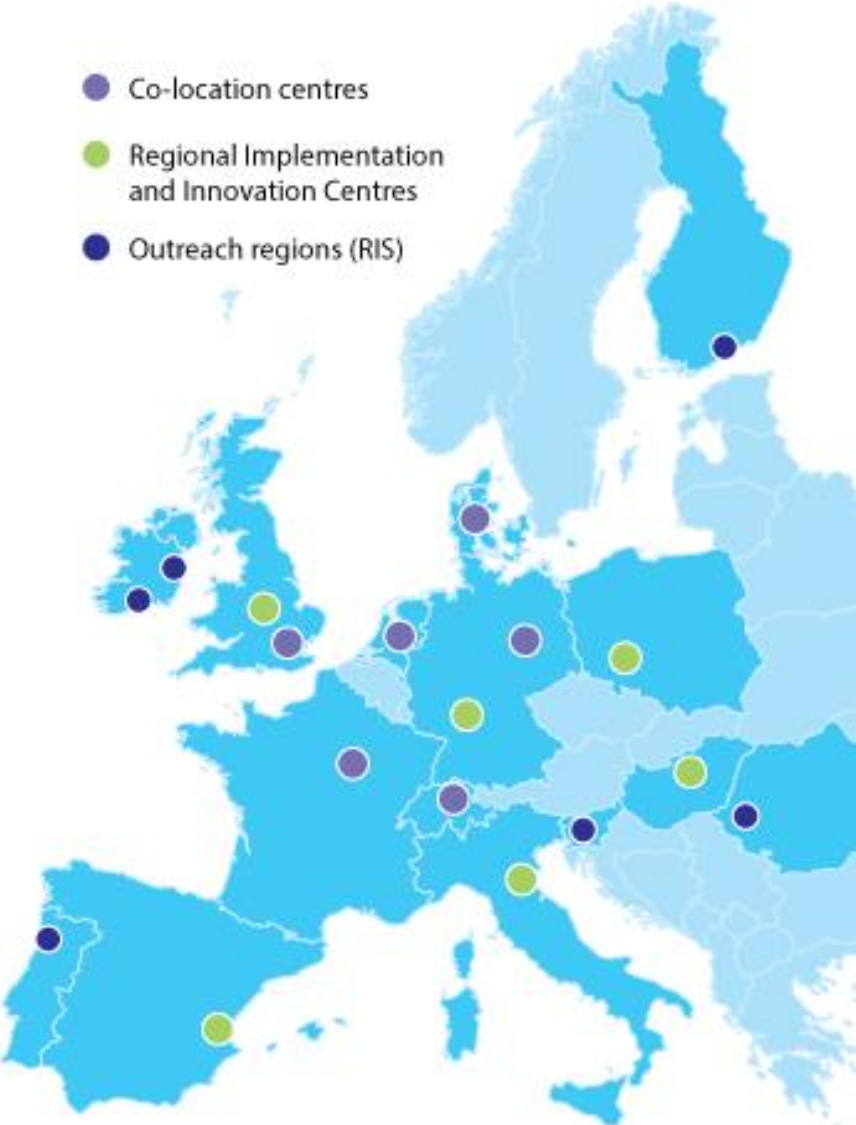
**Move out of your comfort zone with a start of 2x1 months
Practice Transition Thinking in real cases and deliver impact**



Climate-KIC outreach regions



- Co-location centres
- Regional Implementation and Innovation Centres
- Outreach regions (RIS)



Climate-KIC outreach activities



Three groups:

- Transfer of innovative policy and practice:
 - Study visits (inward and outward)
 - Acceptance of pioneers from outreach regions (last year 11 Romanian pioneers, this year 15)
 - Other trainings: in 2014 H2020 training held in Timis region
- Business support and incubation:
 - Start-ups from outreach regions can apply into accelerator program and participate in bootcamp
- Professional education courses: Climate-KIC support participation of experts from outreach regions in Innovation Catalyst courses on different topics



Miklós Gyalai-Korpos, PhD

miklos.gyalai@ppis.hu

Climate-KIC Central Hungary RIC

PANNON Pro Innovation Services Ltd.

1365 Budapest P.O.Box 162.

www.climate-kic.org





We offer transition management, project planning, knowledge transfer and management services for all development phases from ideation to implementation. Main areas of interest:

- **Resource efficiency**
- **Industrial symbiosis**
- **Bioeconomy**

Main activity is knowledge brokerage to companies including challenge/gap analysis, technology selection, as well as full project, innovation and finance management.



Recommendations



In line with the EIT RIS directions

- Promote Climate-KIC model in Danube Region
 - Map the ecosystem and priorities
 - Create communities of like-minded and committed people
 - Involve local experts in Climate-KIC activities and knowledge flow
- Use it to develop the innovation ecosystem focusing on regional strengths (S3)
 - Build cooperation along knowledge triangle
 - Enhance the academia – industry dialogue (match supply – demand)
 - Open up European innovation models for moderate/modest innovators
- Leverage funds
 - More effective use of public funds contributing to regional development
 - Create industrial interest, valuable knowledge and sustainable businesses
- Focus on impacts:
 - Both in terms of climate, economy and society