

External dimension of RIS3/OP

Southern part of
the Netherlands

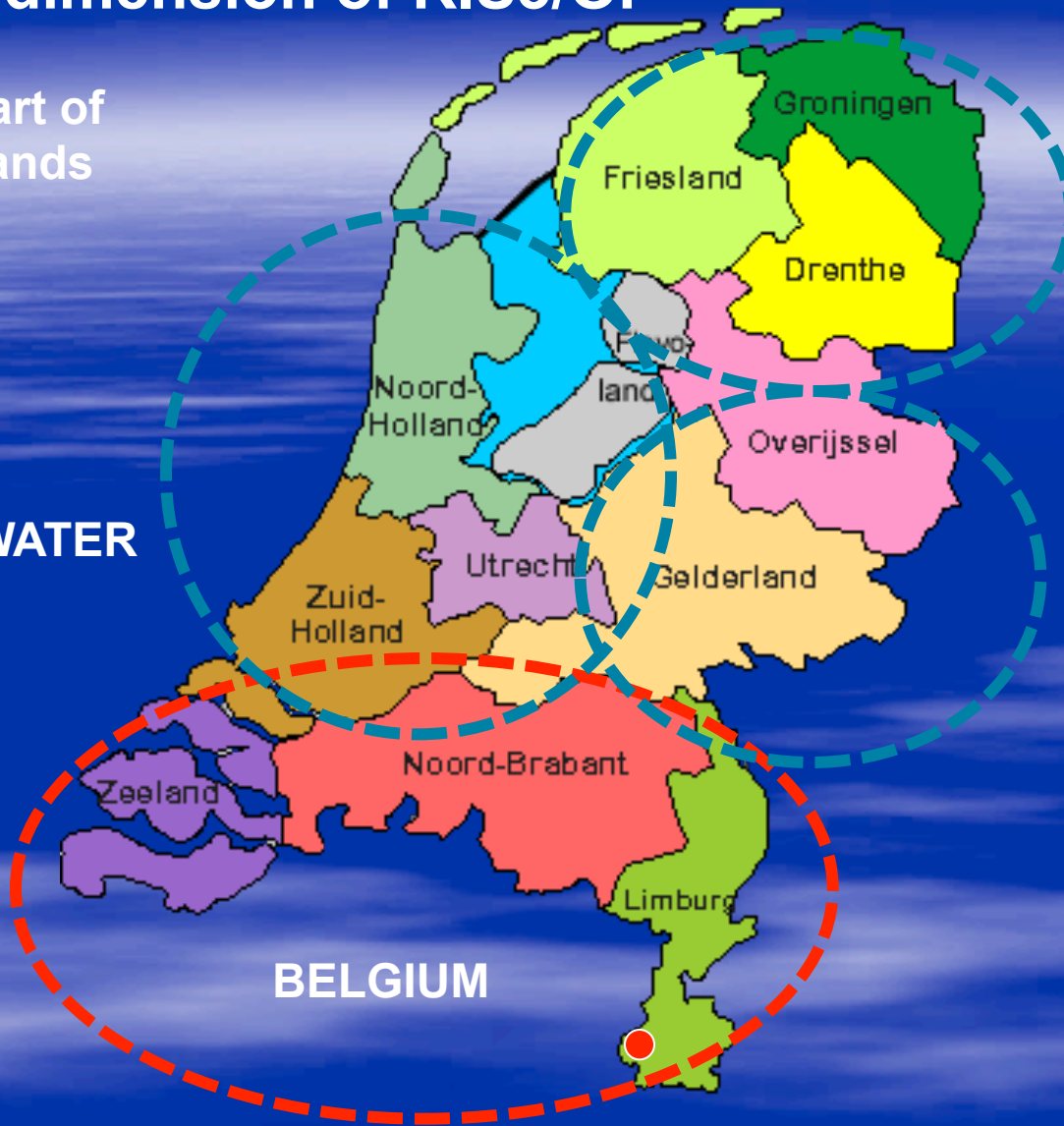
WATER

GERMANY

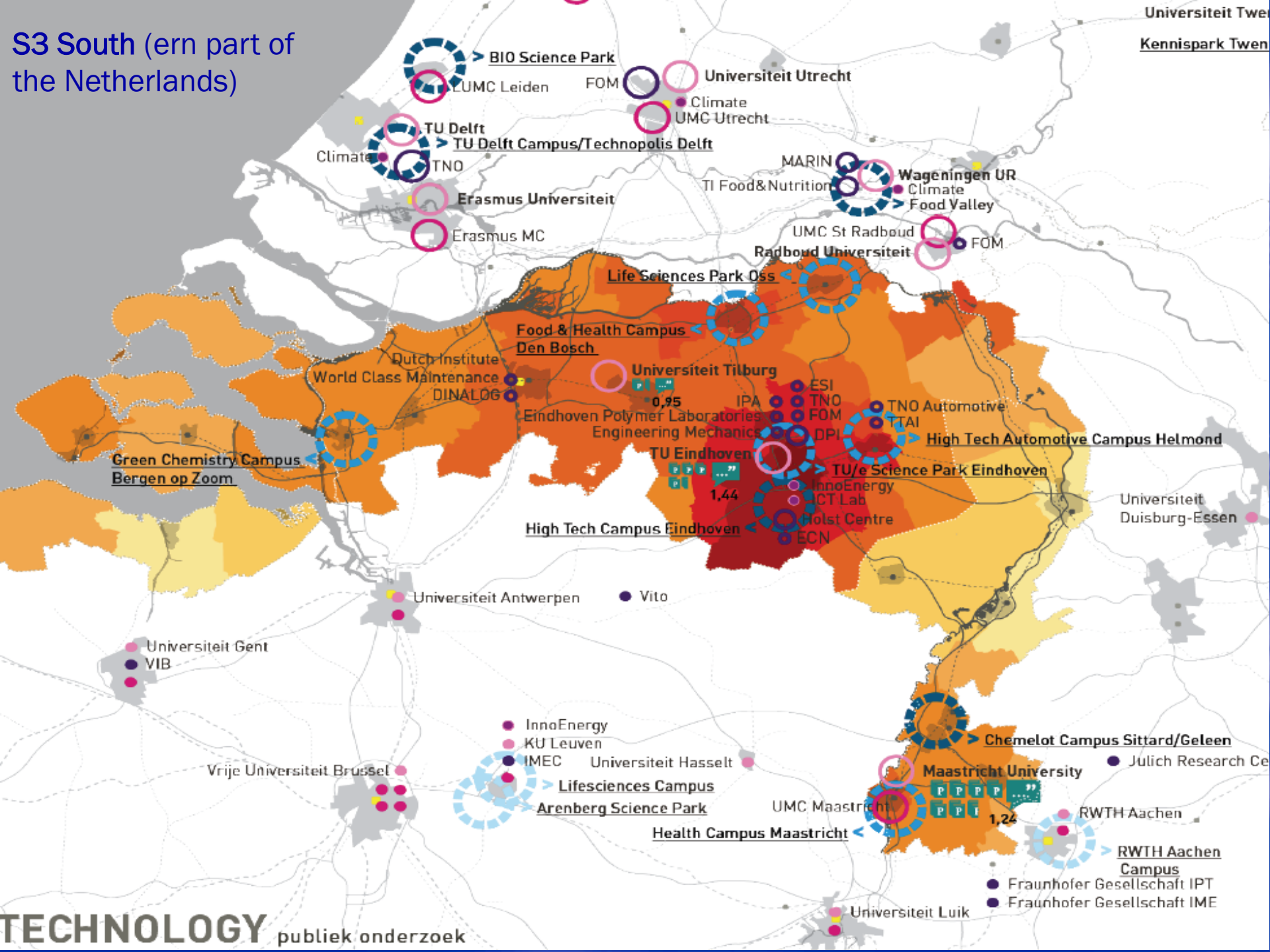
BELGIUM

Dublin, 4 July

Jean Severijns Province of Limburg



S3 South (ern part of the Netherlands)



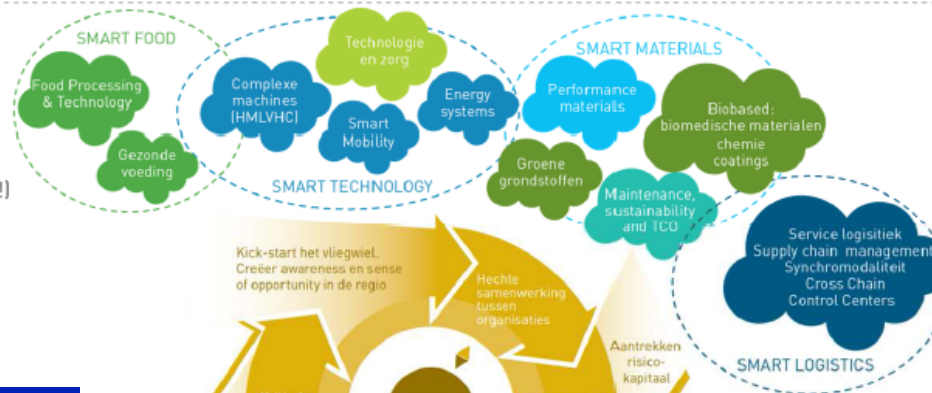
S3, Southern part of the Netherlands

challenges



Innovative chances

(Voorbeelden, niet limitatief!)



Support mechanisms



Methods



National Top clusters with international potential



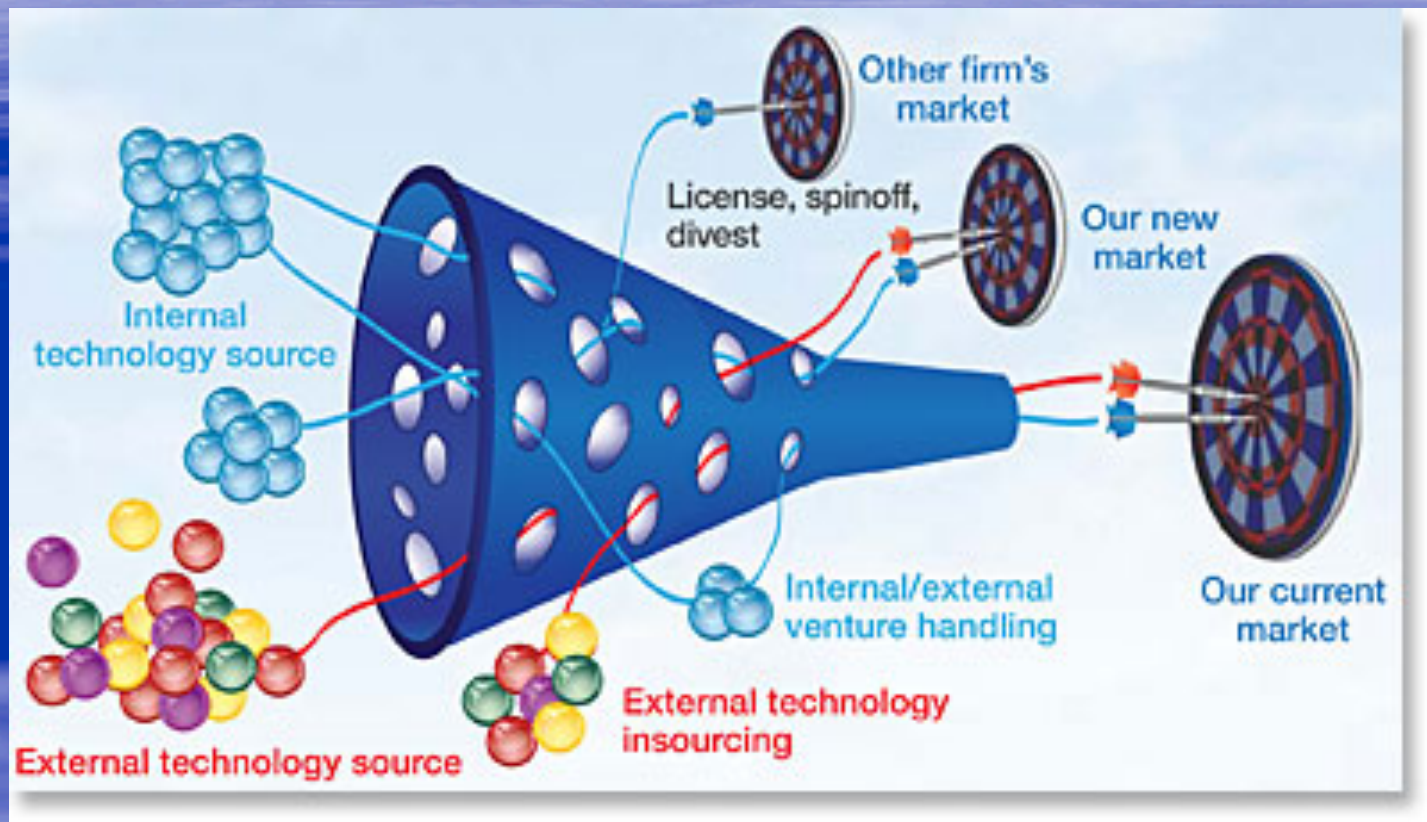
International Top clusters

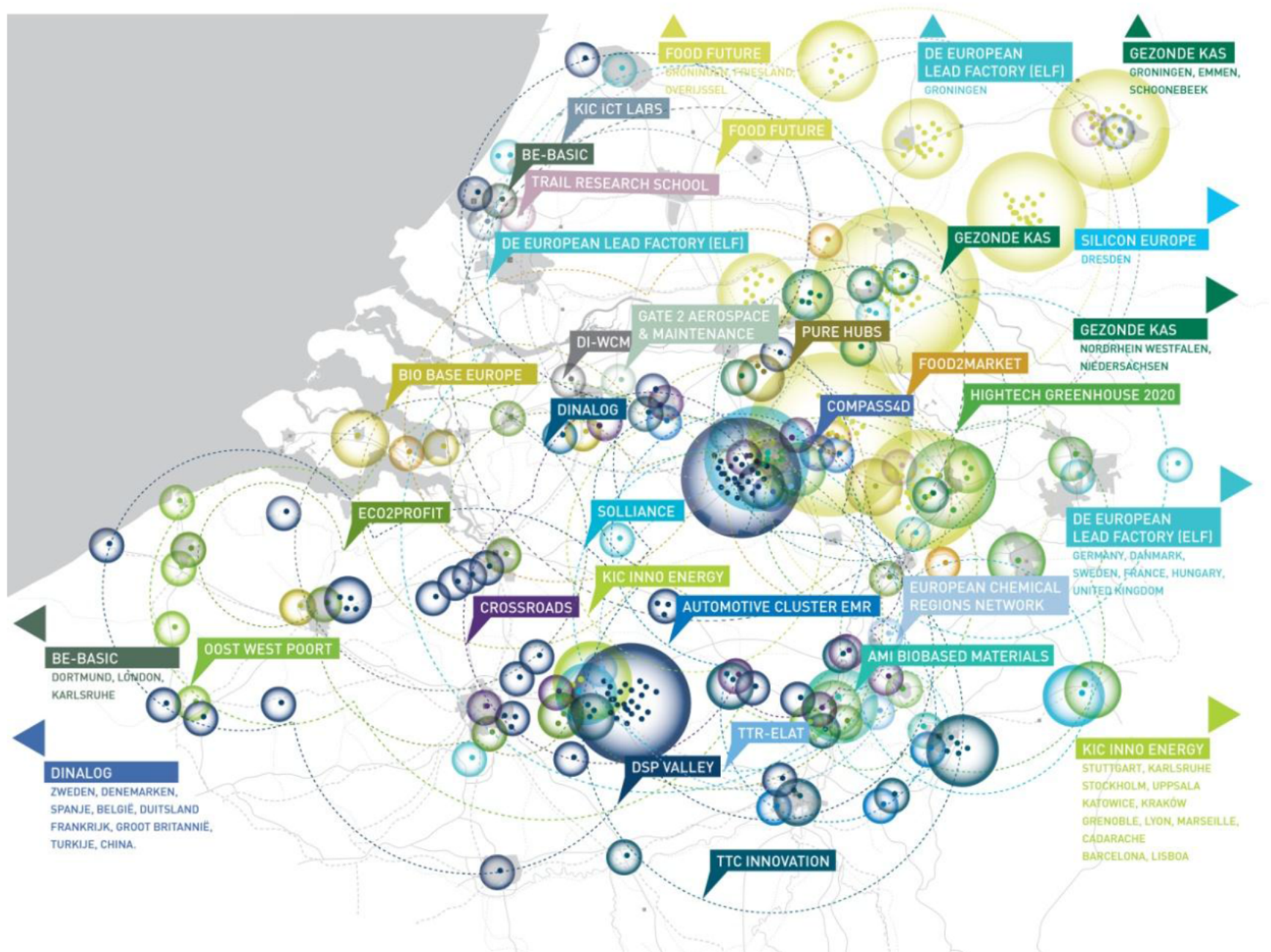


International elements:

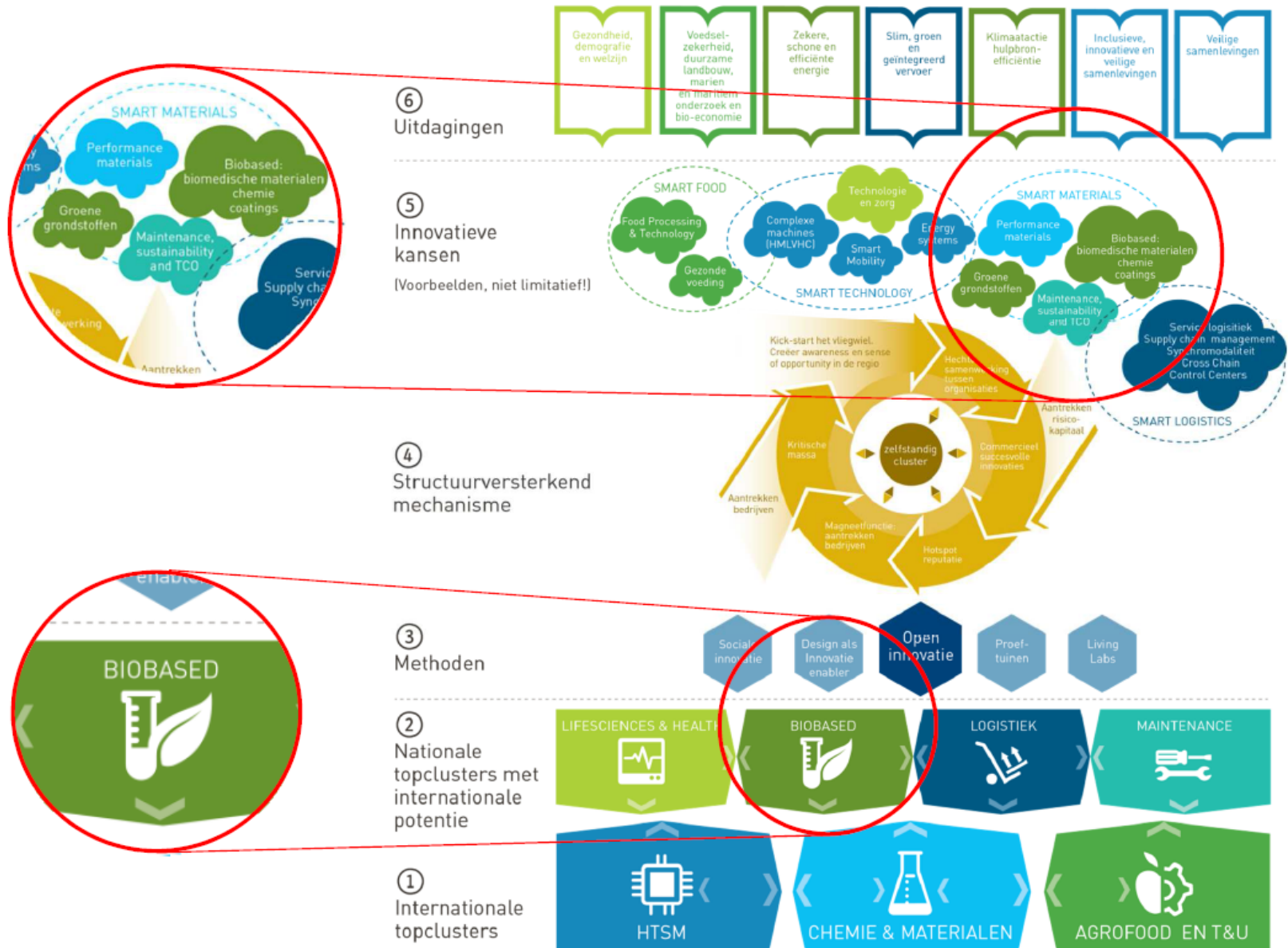
- Link to Interreg A and B, Horizon 2020
- KIC's (Knowledge and Innovation Communities, InnoEnergy + ICT Labs)
- 10% budget for cooperation with cross border dimension (NL,BE, DE)
- Cooperation themes with international partners, attract knowledge workers
- Common goal with neighbours (Top 5 Europe)

RIS 3 is more than the basis for OP/ERDF!





Programma Biobased Zuid-Nederland 2014-2020



Partners Biobased Z-Nederland



- Biobased Delta
- Green Chemistry Campus
- Greenport Venlo
- Chemelot Campus
- Keyport
- Chemelot InSciTe
- AMIBM
- CoE/CIV CHILL
- Universiteit Maastricht
- TU/e
- AgriFood Capital
- Impuls Zeeland
- LIOF
- REWIN
- BOM
- Center of Expertise Biobased Economy

Opmaat naar Euregionale Biobased topcluster Zuid-Nederland, Vlaanderen en Nord-rhein Westfalen: **Biobased Delta Region Europe !**



Knowledge economy



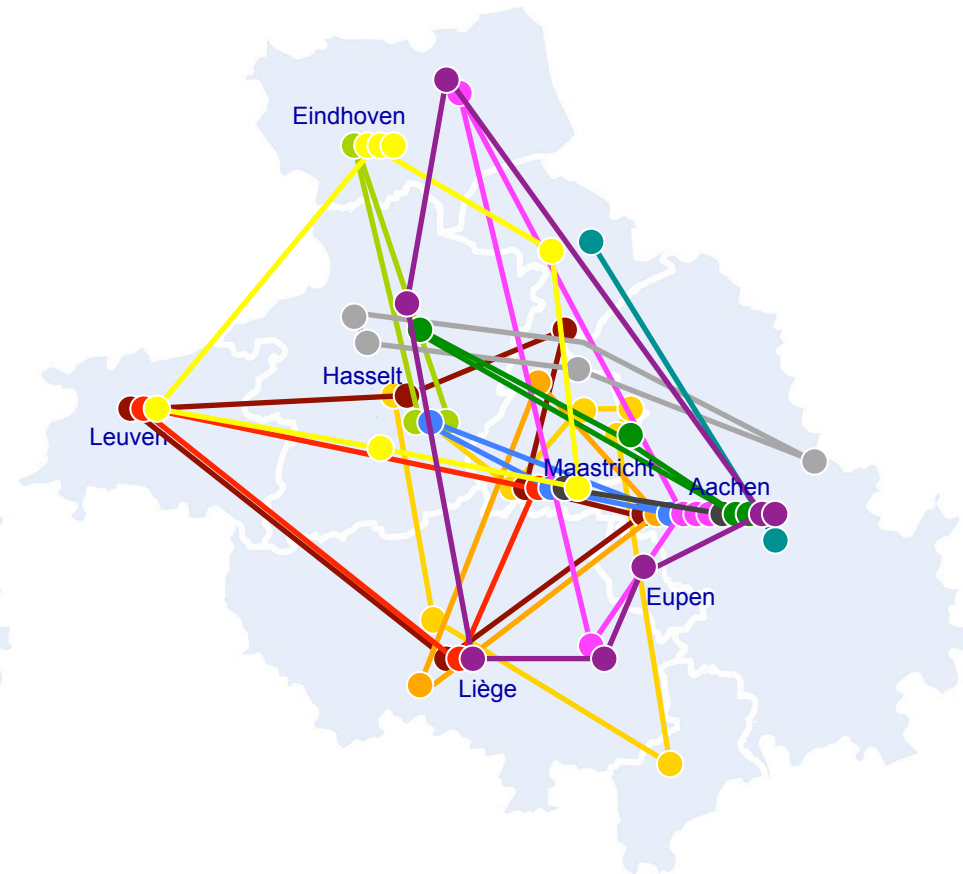
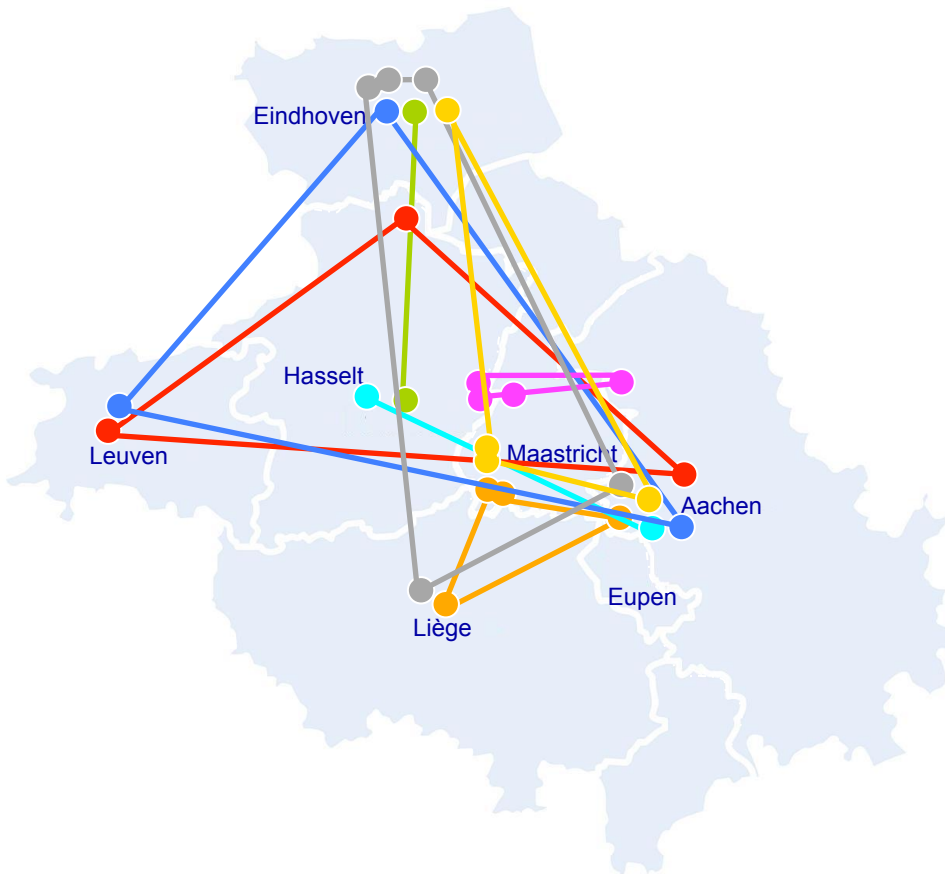
Results

Cross border innovation projects between SME's



Stage 1: 8 R&D projects

Stage 2 : 14 R&D projects





Signing South Netherlands part of Vanguard initiative,

“Smart Specialisation in Industrial Policy”

Asturia, Baden-Württemberg, Bask Country, Lombardia, Nordrhein-Westfalia, Małopolska, Schotland, Wallonia, Skåne, South Netherlands, Tampere, Oberösterreich, Rhône-Alpes, Nord-Portugal, Flanders.

Cooperation Sichuan (China) with both:



Reflections and lessons learned:

- important lead persons, institutions and policies
- **join forces** when you are (relatively) small
- Top-down and bottom-up
- Triple helix with different stakeholders, small and big (not only sme's)
- Build on your evidence based **strengths**
- Connect policies (EU, Nat. regional)
- **Focus** but not too rigid!
- Combine/cross over's to find niche markets
- Open innovation on different levels (business + geographical level)
- Think in value chains
- Identify **persons to** cooperate with
- **Entrepreneurial discovery** process on all levels
- Do not underestimate time dimension
- Do not underestimate existing interests, habits, cultures, adm. Systems etc.
- Valley of death on several levels
- Importance of **business developers** (toughest part, not “sexy”)
- Develop tools (TRIZ, Vouchers, GCS etc)
- **Connectivity and cooperation** on all levels

Thank you for your attention!!



jmj.severijns@prvlimburg.nl