



European Institute of
Innovation & Technology

The EIT is a body of the European Union



EIT

Making innovation happen!

Katerina Sereti,
Barcelona, 16.11.2016

European Institute of Innovation and Technology

Our vision is to become the leading European initiative that empowers innovators and entrepreneurs to develop world-class solutions to societal challenges, and create growth and skilled jobs.

- 1st EU initiative bringing together the three sides of the 'knowledge triangle': business (companies and SMEs), education institutions and research centres.
- aim to increase the cooperation and integration between higher education, business and research to facilitate the transition from:



student to entrepreneur

idea to product

lab to customer



Our strategy to boost innovation in Europe

Facilitate the development of European ecosystems where research, business and education come together to find sustainable solutions to societal challenges by:

- Creating interconnected knowledge and creativity hotspots
- Fostering talent: innovators, entrepreneurs and students
- Attracting investors

EIT – an integral part of

HORIZON 2020



The EIT contributes to H2020 by addressing societal challenges via the integration of the knowledge triangle



H2020 has a budget of approx. € 80 billion for 2014 to 2020, out of which the EIT has been allocated € 2.4 billion



The EIT will further nurture synergies and complementarities across H2020 and its different initiatives



European Institute of
Innovation & Technology

Knowledge and Innovation Communities

The EIT's KICs are:

- Thematic innovation communities that develop innovative products and services, foster new business , encourage growth and nurture young entrepreneurial talent
- Characterised by a high degree of integration, a long-term perspective, efficient governance, the co-location model and the entrepreneurial culture
- Unique partnerships that increase Europe's capacity for innovation by bringing together leading companies, universities and research labs
- Able to react to new challenges and changing environments in an effective and flexible way
- Driven by a pursuit of excellence



EIT priorities 2014 – 2020

1

Fostering
growth and impact of
first 3 KICS

Climate-KIC

EIT Digital
InnoEnergy

2

Creating
5 new KICs

2014

EIT Health
EIT Raw Materials

2016

EIT Food
EIT Manufacturing

2018

EIT Urban Mobility

3

**Sharing and
Disseminating**

EIT Community
good practices

Inc. EIT Regional
Innovation Scheme
(EIT RIS)



European Institute of
Innovation & Technology

EIT Community: first achievements

Climate-KIC, EIT Digital and EIT InnoEnergy have grown into thriving European innovation hubs:



24,162

Attractiveness of education programmes – more than 13 applicants per offered seat



1028

number of graduates



1141

number of business ideas incubated



205

number of start-ups created



558

number of knowledge transfers/adoption

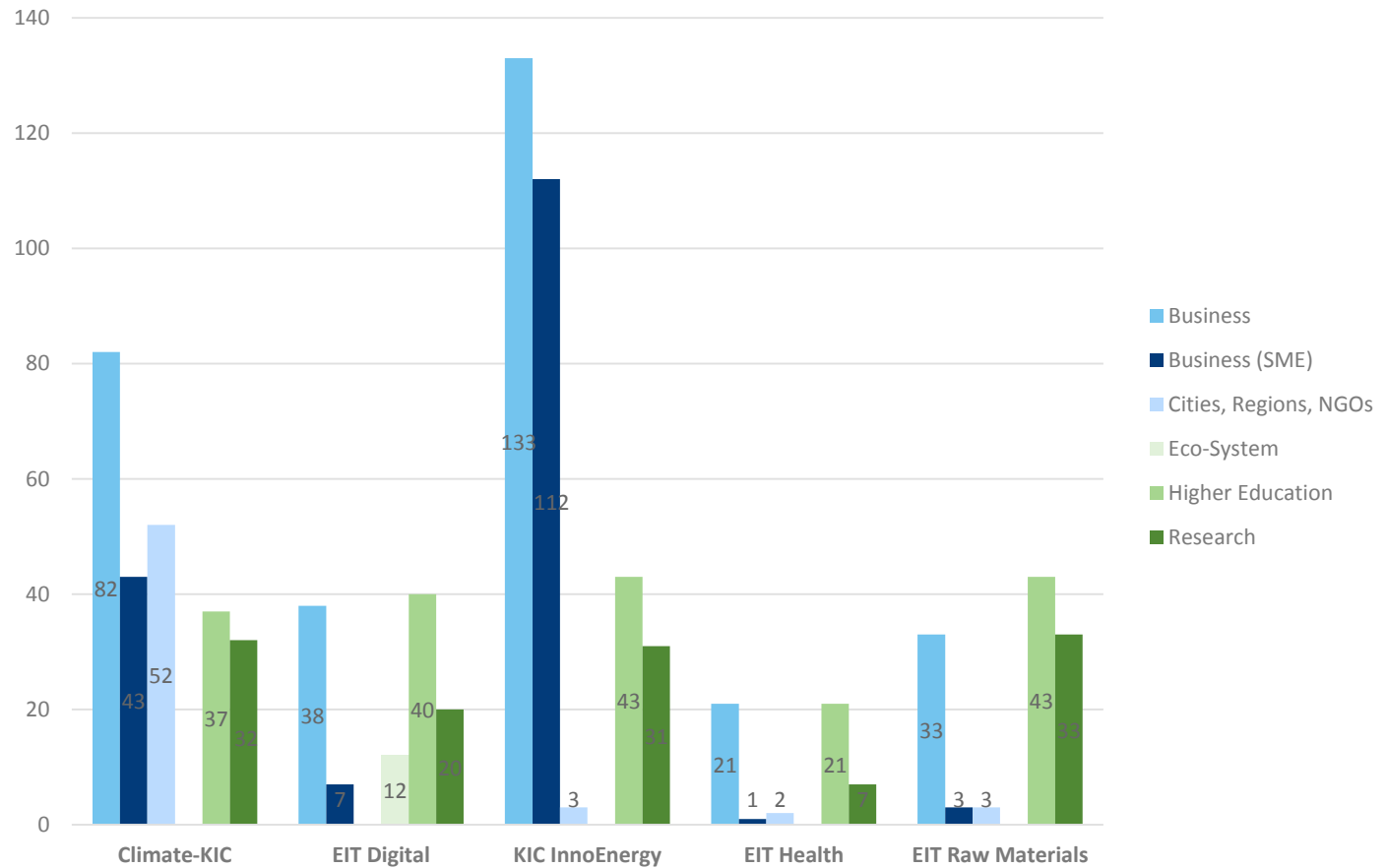


280

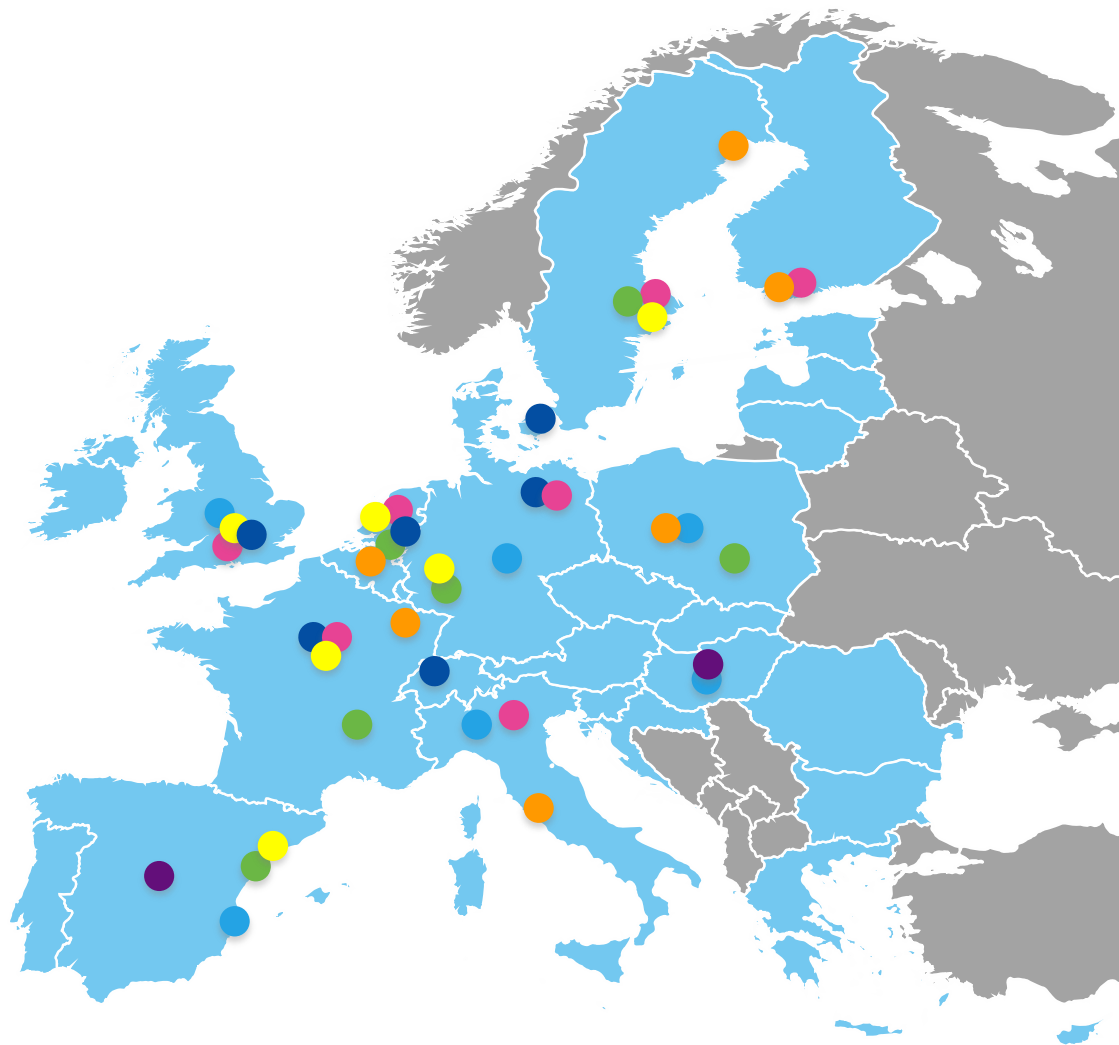
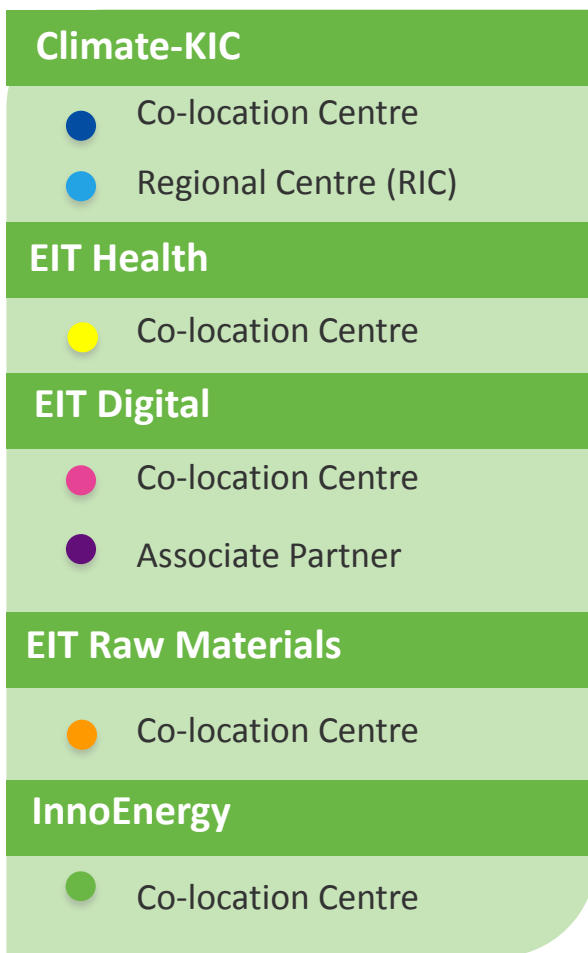
number of new or improved products, services and processes launched

Overview of KIC partners

Today, the EIT Community brings together more than **800 partners**:



EIT across Europe: KICs' Co-location Centres



KICs' Co-location Centres (CLCs)

- Bring ideas and people together in new ways and facilitate the exchange of ideas and interactions between partners and other stakeholders.
- Contribute to the development of a regional entrepreneurial culture.
- Build trust and openness among their partners.
- Create opportunities for new and existing organisations to access leading European teams.
- Provide opportunities for new products to be tested and new services to be developed.
- Provide innovators and entrepreneurs with access to markets.
- Disseminate and transfer the expertise and experience gained.
- Seek synergies and complementarities with regional, national and EU policies, funding mechanisms and programmes to spur innovation and entrepreneurship.

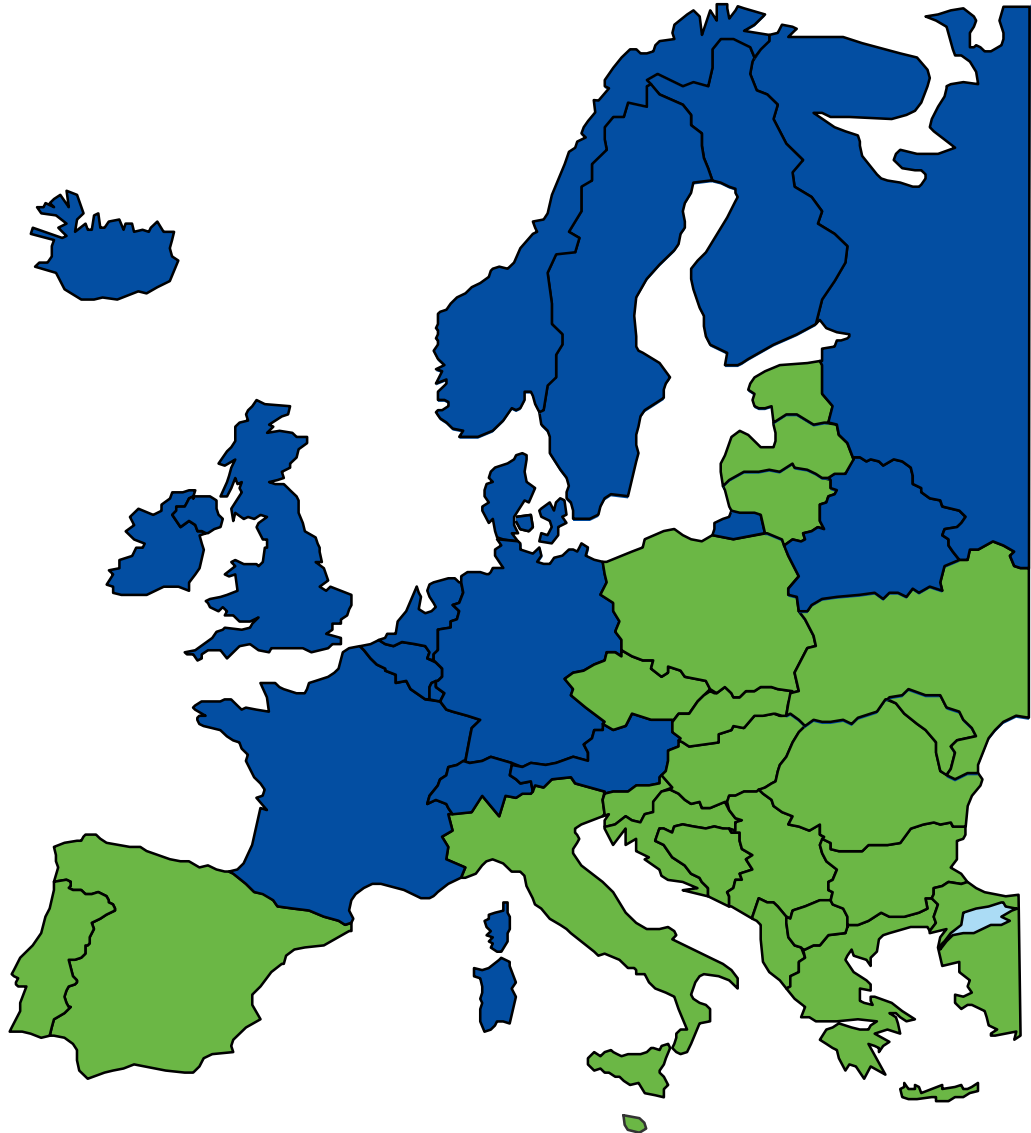
EIT Regional Innovation Scheme (EIT RIS):

- Structured outreach scheme **aimed at enhancing the innovation capacity** in Member States that are moderate and modest innovators, as well as in Associated Countries
- **Based on a two-way engagement** between KICs and selected partnerships from the wider European innovation community
- **KICs aim at** EIT RIS partnerships (open calls) with actors from the local business community, Universities as also Research Institutes
- EIT RIS partners are **thematically aligned with KIC activities** and have the potential to create **impacts on national level**
- KICs RIS activities include business support and accelerators, education activities for students and professionals as also funding of innovation projects

EIT Regional Innovation Scheme

Eligible countries:

- | | |
|-------------------|---|
| 1) Bulgaria | 18) Albania |
| 2) Croatia | 19) Bosnia and Herzegovina |
| 3) Cyprus | 20) Faroe Islands |
| 4) Czech Republic | 21) Former Yugoslav Republic of Macedonia |
| 5) Estonia | 22) Moldova |
| 6) Greece | 23) Montenegro |
| 7) Hungary | 24) Serbia |
| 8) Italy | 25) Turkey |
| 9) Latvia | 26) Ukraine |
| 10) Lithuania | |
| 11) Malta | |
| 12) Poland | |
| 13) Portugal | |
| 14) Slovakia | |
| 15) Slovenia | |
| 16) Spain | |
| 17) Romania | |



European Institute of
Innovation & Technology

EIT Manufacturing

Added-value manufacturing

EIT Manufacturing



Added Value Manufacturing

Strengthen high value (or added-value) manufacturing industries to guarantee Europe's competitive position. Create value by delivering product and service innovation, establishing process excellence, achieving high brand recognition and contributing to a sustainable society.

- **The new KIC will help meeting Horizon2020 objective of :**

“transforming today’s industrial forms of production towards more knowledge intensive, sustainable, low emission, trans-sectoral manufacturing and processing technologies, to realise innovative products, processes and services.”



European Institute of
Innovation & Technology

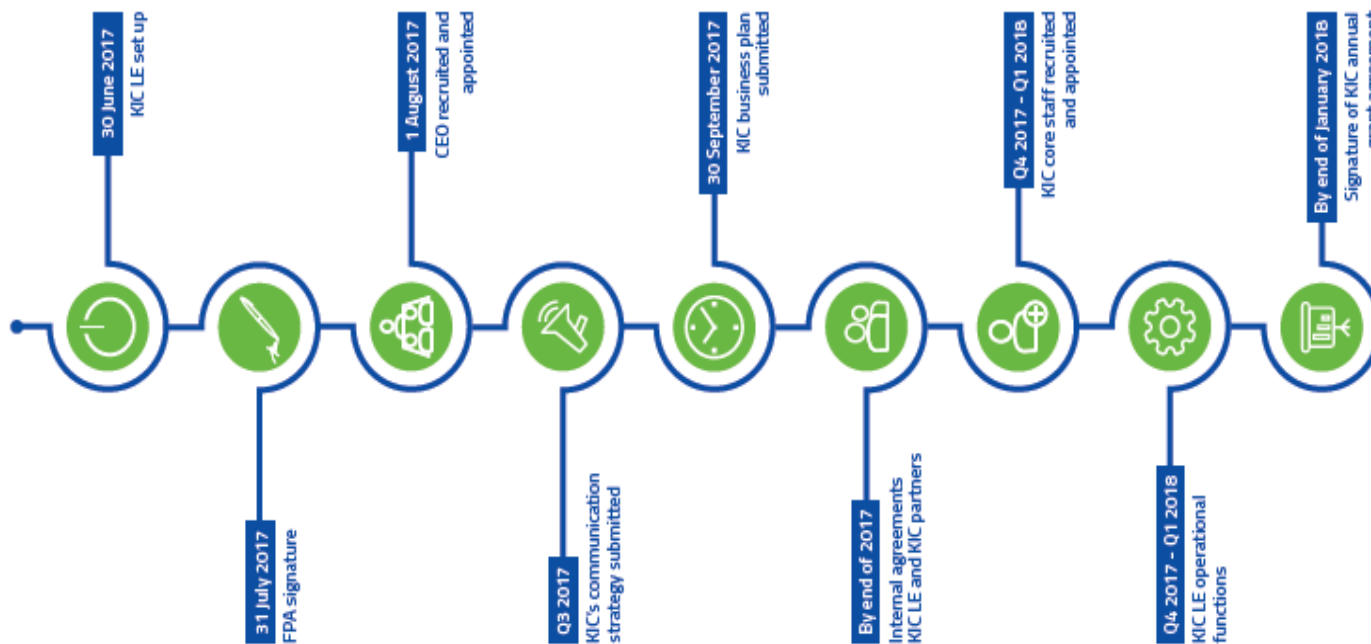
EIT Manufacturing

Added-value manufacturing

The new KIC will mobilise investment and long term commitment from Knowledge Triangle Integration (KTI) actors with notable participation by the business sector, in order to expand and create new markets by supporting actions such as:

- Eco-design
- Development of advanced manufacturing engineering processes
- New emerging manufacturing sciences and technologies
- Transformation of existing research and education infrastructures to support world class manufacturing

EIT Manufacturing: From Designation to Operations



By Feb 2018
Implementation
of Business Plan

Key dates



European Institute of
Innovation & Technology

The role of CLCs for the industrial modernisation

CLCs as innovation eco-systems are **active innovation enablers** for start-ups, SMES and larger corporations facilitating the flows of ideas, projects and investments, and therefore have **key-role in regional economies**, inter-linked with other regions where CLCs of the same KIC or from a cooperating KIC are based

These thematic CLCs are :

- already strategically positioned across Europe,
- collecting the necessary critical mass of renowned actors from all sides of the KTI in their relevant thematic area
- functioning as accelerators of innovation through the implementation of their annual business plans approved by the EIT

Opportunities for synergies with the EIT KICs

Based on the **Entrepreneurial Discovery Process (EDP)**, regions identified their S3 priorities, something that allowed them to understand and learn about:

- Regional capacities, potential and opportunities
- Weaknesses and needs
- Local actors, their activities and markets

the KICs value proposition during the Investment Pipeline procedure :

KICs CLC (Co-Location Centers) to work with regions closely by

- providing its pools of **expertise** on the relevant areas and the necessary value added **links** to all necessary interregional KTI actors
- tapping into existing connections in Global Value Chains (GVCs) through the KIC partners and available equipment
- Facilitating spill-over effects through the CLCs at regional and interregional levels through cross-CLCs cooperation

Opportunities for synergies with the EIT KICs

Examples of possible matching between KICs' thematic focus and existing thematic areas for Ind. Modernization

Efficient & Sustainable Manufacturing

- **Climate-KIC** : Sustainable Production Systems
- **InnoEnergy**: Energy Efficiency, Renewable Energies, Smart & Efficient Buildings & Cities
- **EIT Raw Materials**: Design of Products & Services for Circular Economy

ADMA Energy

- **InnoEnergy**: Renewable energies, Clean Coal and Gas Technologies

New nano-enabled Products

- **InnoEnergy & EIT Digital** with Nanowires for ICT & Energy applications
- **EIT Health** with nanomedicine/medTech

In a nutshell: opportunities with the EIT KICs

- a) the new KIC on Advanced Manufacturing (EIT Manufacturing)
- b) synergies with the CLCs of the 5 existing KICs.

While the European Innovation landscape is under the current significant transformation, the KICs ecosystems could support the Regions by providing interactions and synergies with regional and interregional actors and infrastructures.

Please contact the EIT for questions or expression of interest to cooperate with the KICs

katerina.sereti@eit.europa.eu