

Showcasing the potential of the BLUEMED initiative to stimulate investments, economic growth and jobs

The shorter the coastline the bigger the challenges of BLUEMED

Vlado Malačič

National Institute of Biology

Slovenia

The SRIA – Key Challenges

Key enabling support knowledge for the Mediterranean

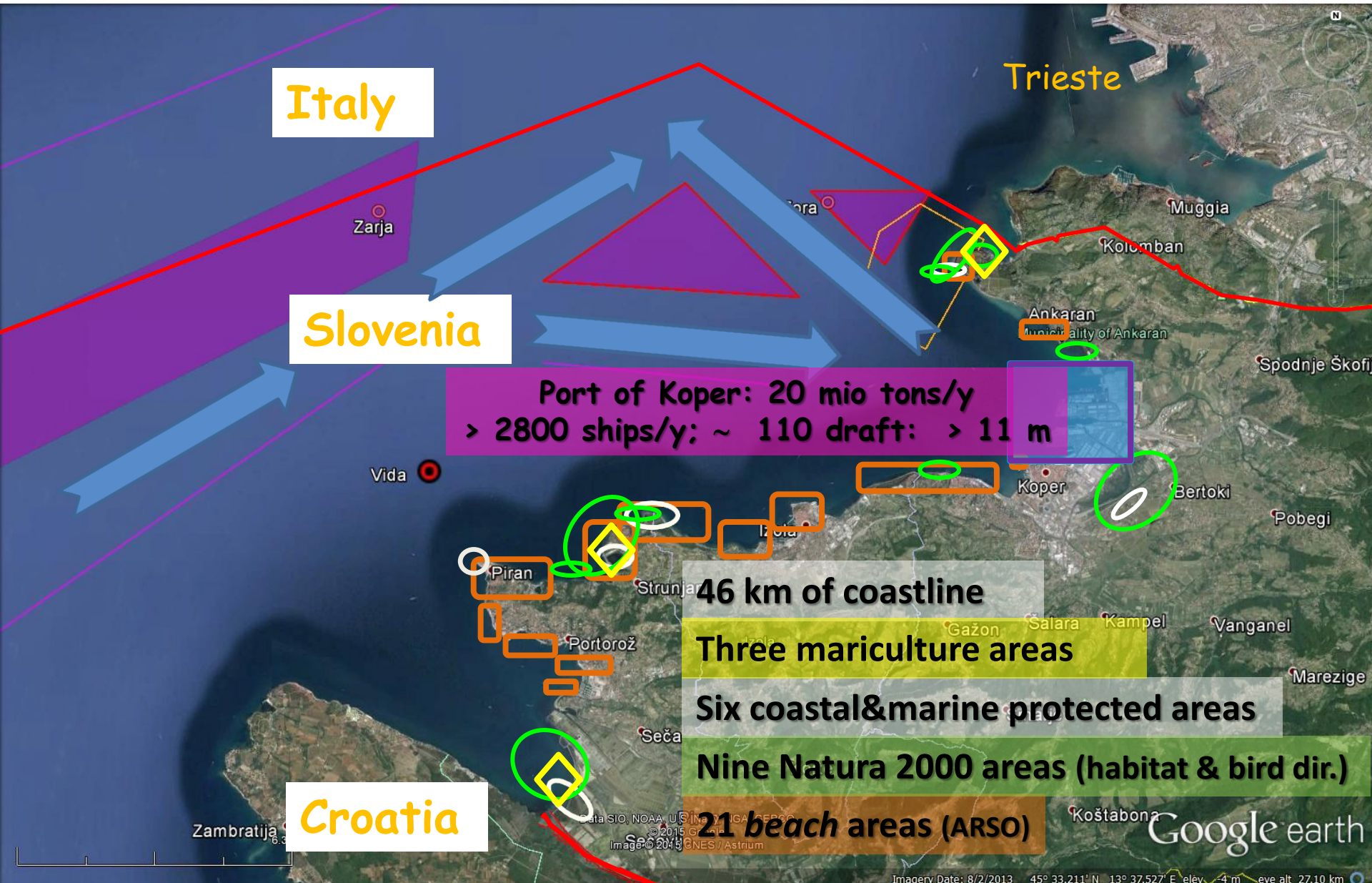
- Mediterranean Sea ecosystems: services, resources, vulnerability and resilience to natural and anthropogenic pressures
- Mediterranean Sea dynamics: developing services in the field of sustainable adaptation to climate change and plans for mitigation
- Hazards and protection of coastal areas in the Mediterranean

Key sectorial enablers in the Mediterranean

- Innovative businesses based on marine bio-resources in the Mediterranean
- Ecosystem-based management of Mediterranean aquaculture and fisheries
- Sustainable tourism in the Mediterranean
- Maritime clusters in the Mediterranean
- Maritime Spatial Planning and Integrated Coastal Zone Management in the Mediterranean

Enabling technology and capacity creation for the Mediterranean

- Smart, greener maritime transport and facilities in the Mediterranean
- Observing systems and operational oceanography capacities in the Mediterranean
- Multi-purpose off-shore platforms in the Mediterranean
- Marine and coastal cultural heritage: in the Mediterranean: discovering, protecting and valuing



Port of Koper
<http://www.luka-kp.si/eng/>



Port of Koper

Search for ...



COMPANY

SERVICES & TERMINALS

PORT HANDBOOK

INVESTORS

MEDIA CENTRE

Smart, greener

674.033 TEUs in 2014, the
leading maritime transport &
in the Adriatic

maritime transport &

in the Adriatic

- 2014: 163.6 mio € *facilities*
- 31.12. 2013: 991 employees (Group of Port)
- Bottom depth in Port basin: 14 m
- 367 m long container ship *Gerda Maersk*
- 'Green Port':
 - over 2000 trees (250 olive trees) & bushes
 - EMAS (ECO - Management and Audit Scheme) environmental standards

- 
- Bottom anoxia
 - Red tides



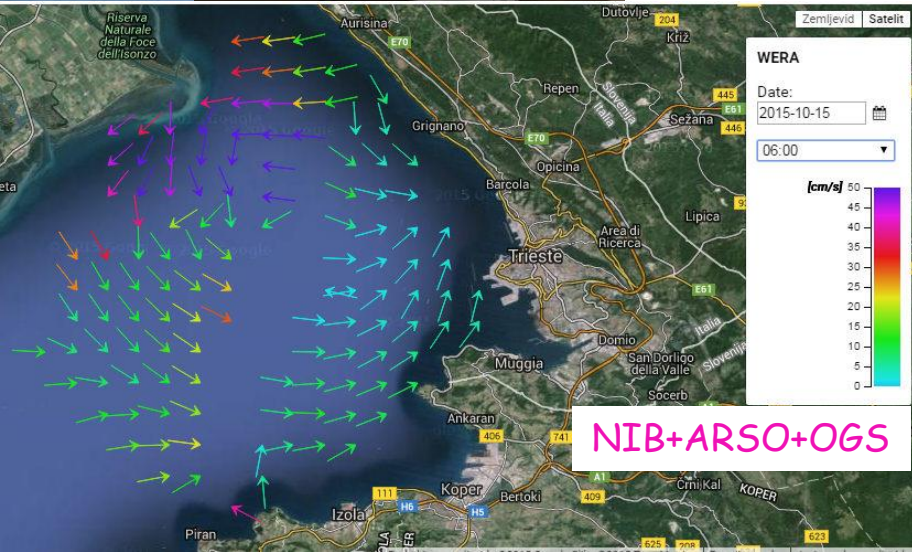
Mediterranean Sea ecosystems: services, vulnerability & resilience to natural & *anthropogenic pressures*

- 
- 
- 
- Jellyfish outbreaks
 - Mucus aggregates
 - Sewage discharges

Observing systems & op. oceanography



measurements
of surface
currents &
waves
(24 MHz)
IPA Adriatic 'HAZADR'
NIB (ARSO) + OGS Trieste



Key challenge (a conflict):

The Port of Koper 2030:

20 mio tons (0.73 M TEU) → 35 mio tons tranship (2 M TEU)

'Doubling' the number of vessels in the Bay?

To be balanced

Convention on biological diversity

within the

BLUEMED

CHALLENGES

196 Parties (168 Signatures); <https://www.cbd.int/sp/targets/rationale/target-11/> Target

11: By 2020, at least 17% of terrestrial & inland water areas
& 10% of coastal & marine areas (now ~ 0.6%)

MSFD Article 13: 4. ...contributing to coherent & representative networks of marine protected areas, ...pursuant to the Habitats Directive