



EIT Food as a KIC Knowledge and Innovation Community



The European innovation paradox

Excellent European research base, dynamic companies and creative talent



Good ideas are too rarely turned into new products or services!

EIT's Innovation Communities

EIT Climate-KIC



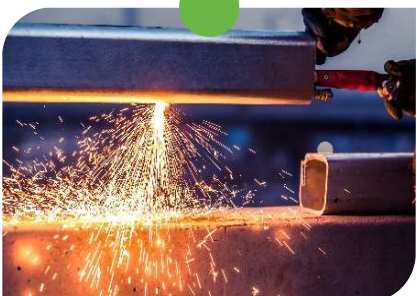
EIT Digital



EIT InnoEnergy



EIT Raw Materials



EIT Health



EIT Food



From Nov 2016



Vision EIT Food: the food I value



Our ambition is to create
a future proof and effective food sector
through a connected food system,
centered on the consumer, built on trust.





EIT Food Partners

EIT Food partners: transforming our food system together



production



processing



distribution



consumption

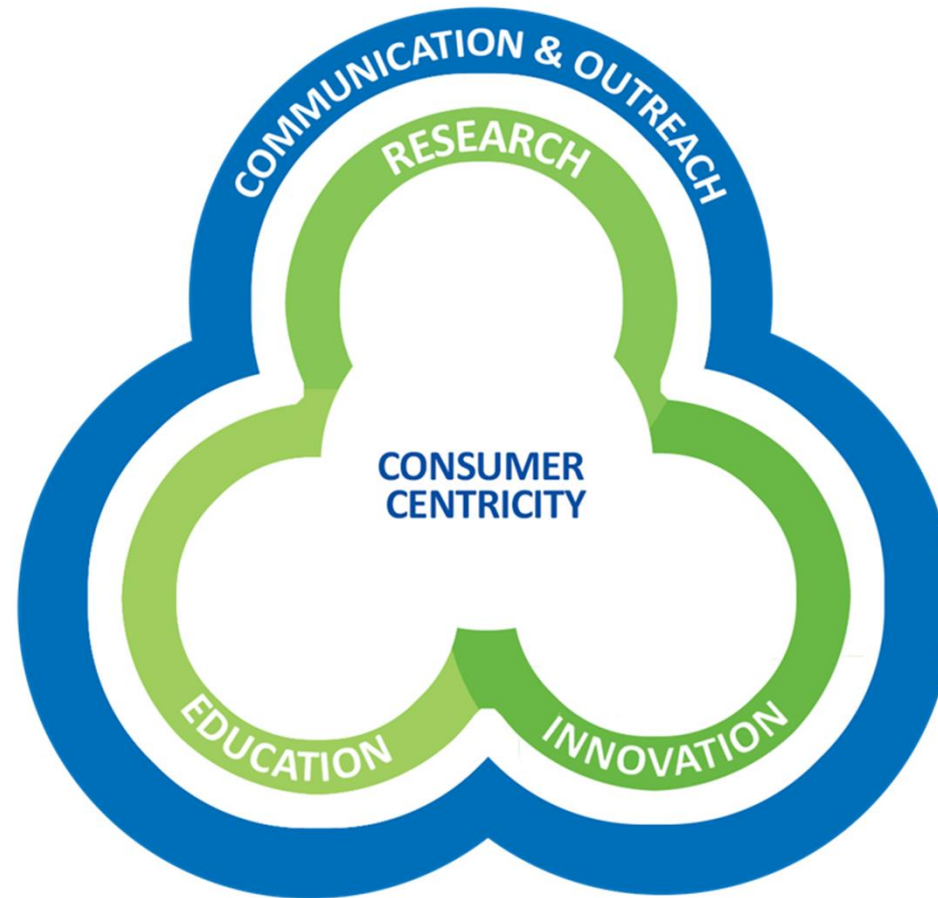


side streams



Strategy EIT Food

Consumers as change agents



Innovation programmes



EIT Food Innovation programmes



Empower consumers to self-monitor lifestyle and health performance and enable informed healthier decisions and sustainable consumption habits



Consumer-centric “fork-to-farm” approaches to deliver personalized healthy food at economies-of-scale associated with mass production



Digitalization of the food system to boost a demand-driven, resource-efficient food production and build trust by increasing traceability and auditability of food quality, safety and authenticity

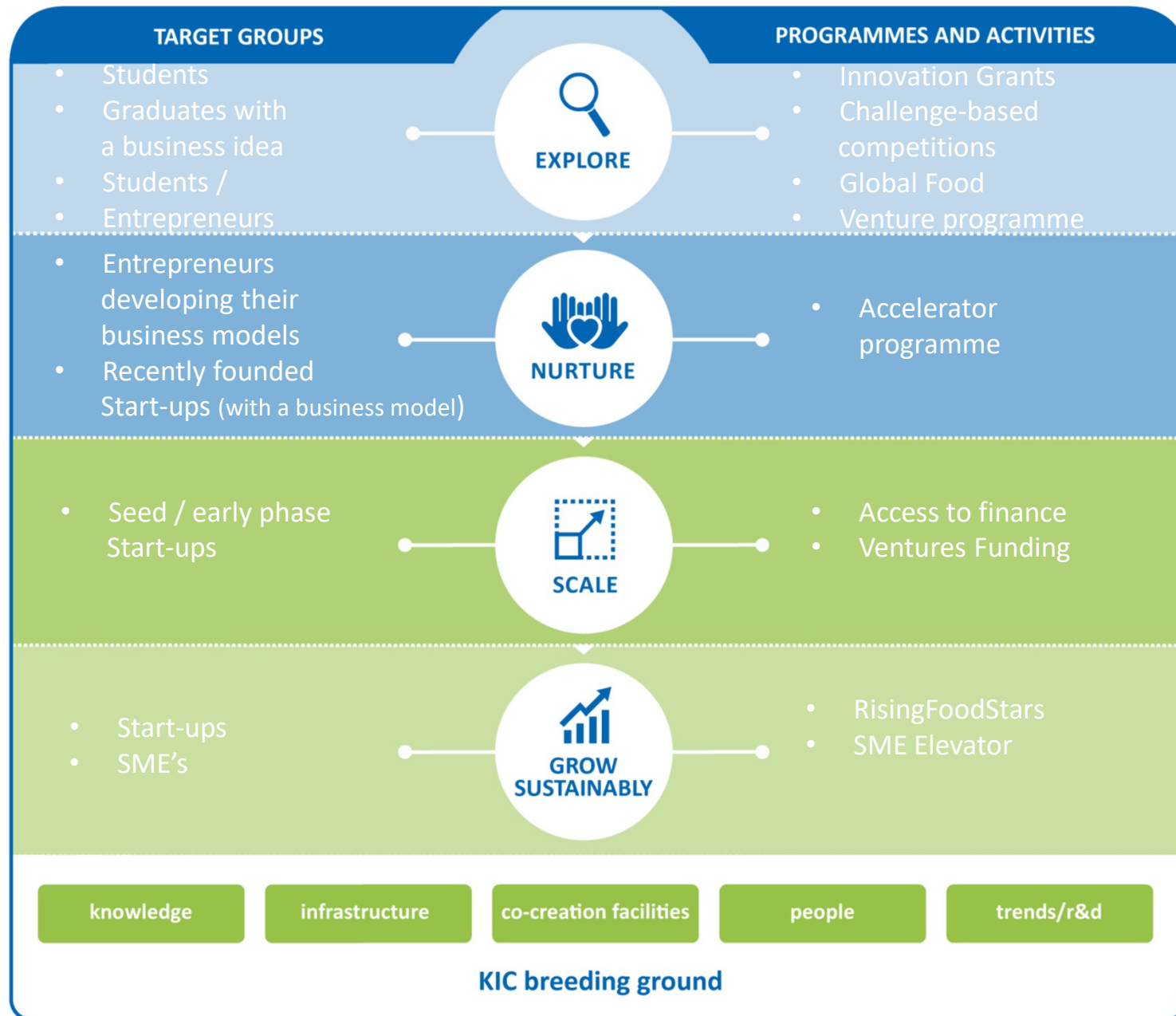


Transforming today’s linear “produce-use-dispose” model into a circular bio-economy centered around the consumer

Business Creation programmes



EIT Food Business Creation programmes



Education programmes





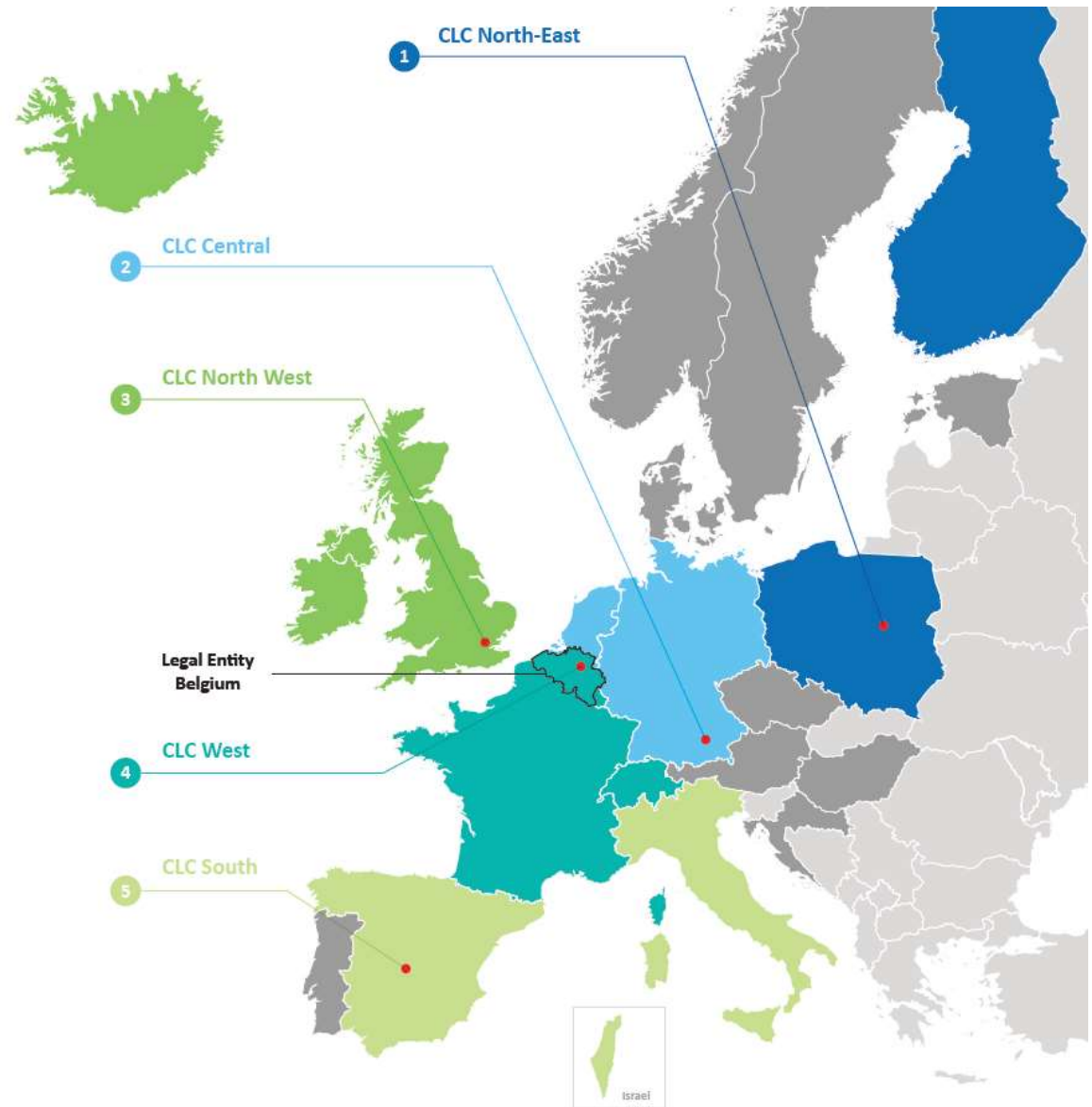
Co-Location Centers EIT Food

The EIT Food community

Legal Entity
Belgium

5 Co-location Centers
(CLCs)

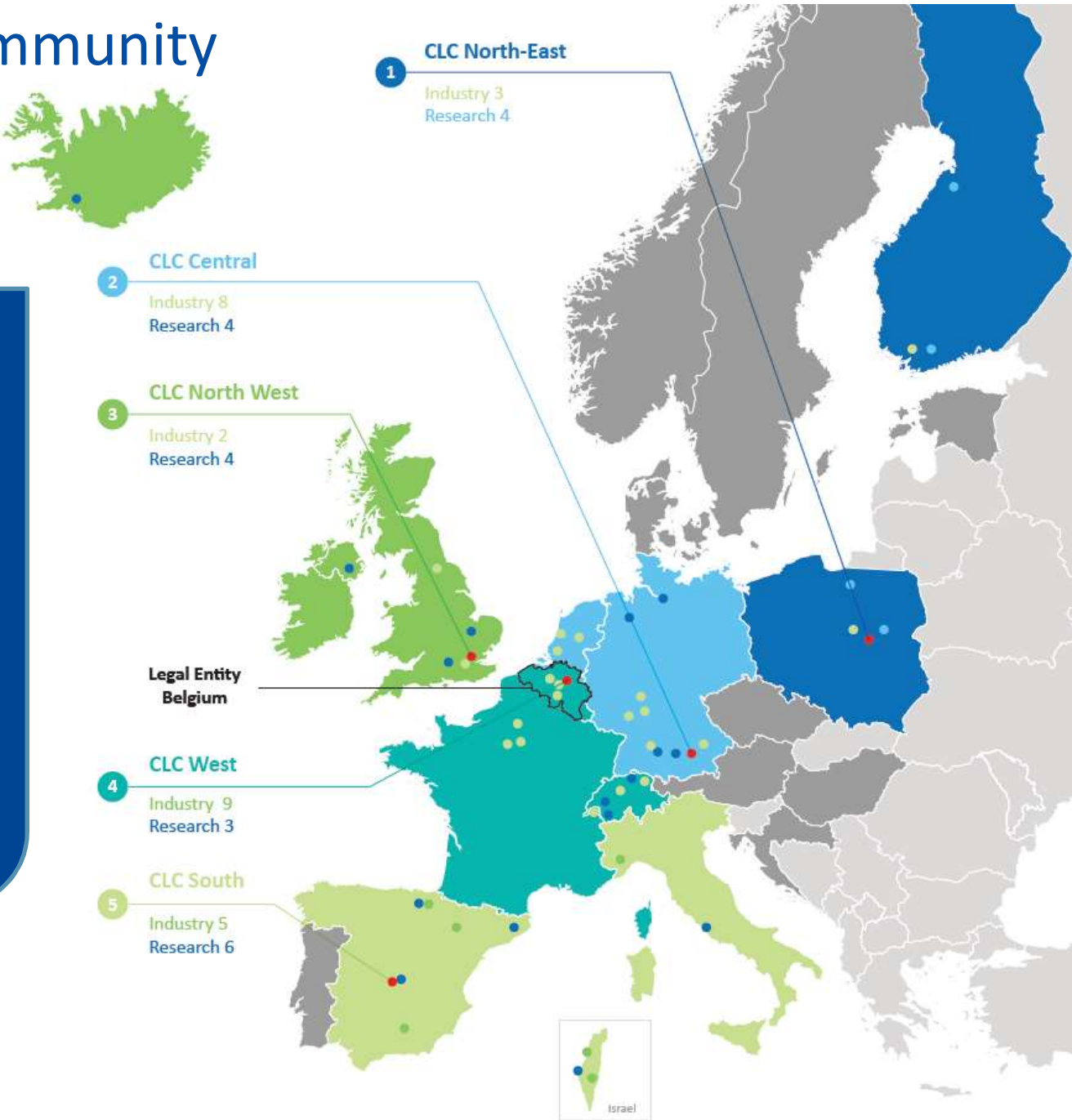
Leuven/Brussels
Reading
Madrid
Munich
Warsaw



The EIT Food community

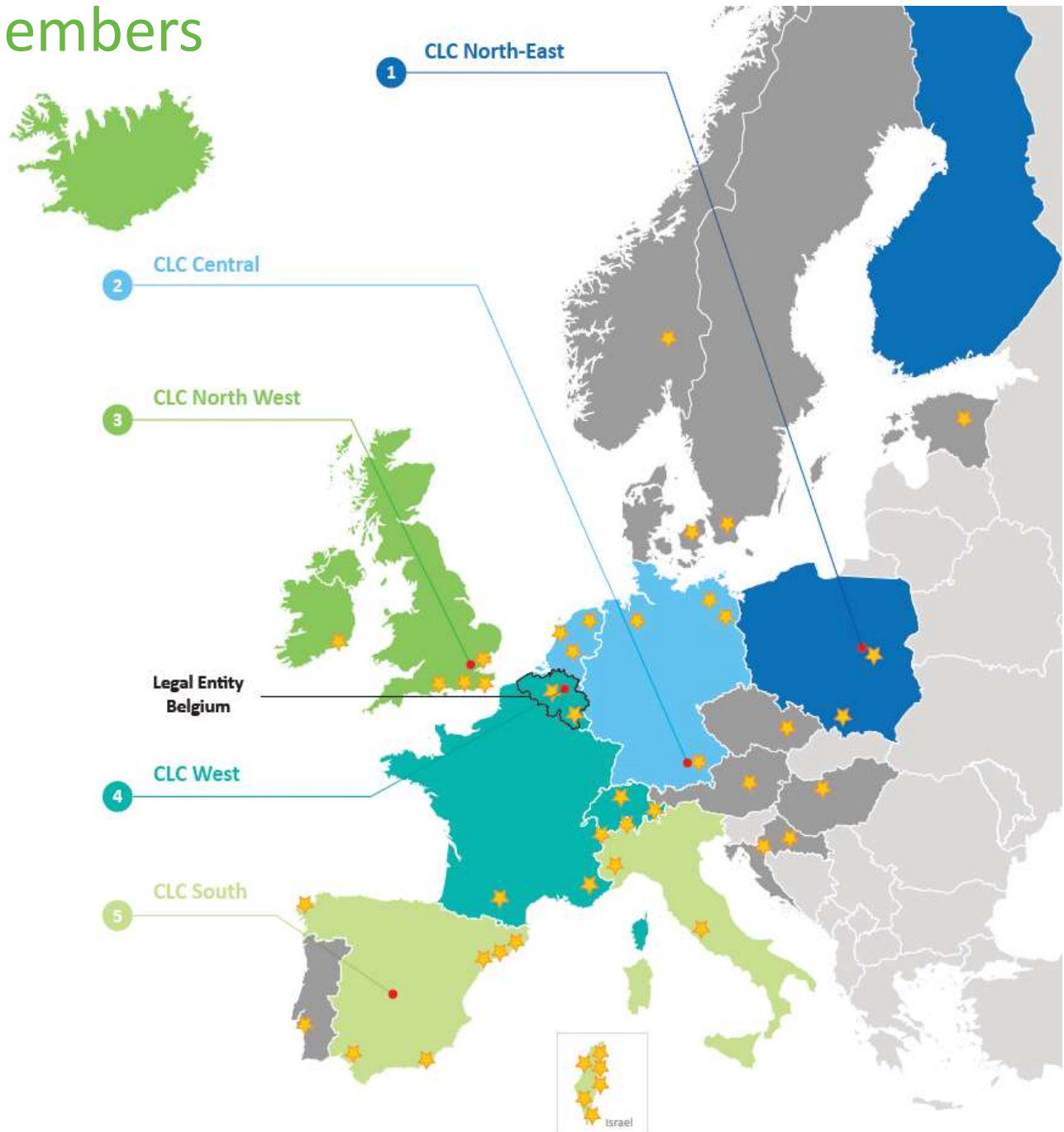
55 partners

- business/industry
- Higher education
- Research organisations
- Public administration
- NGO

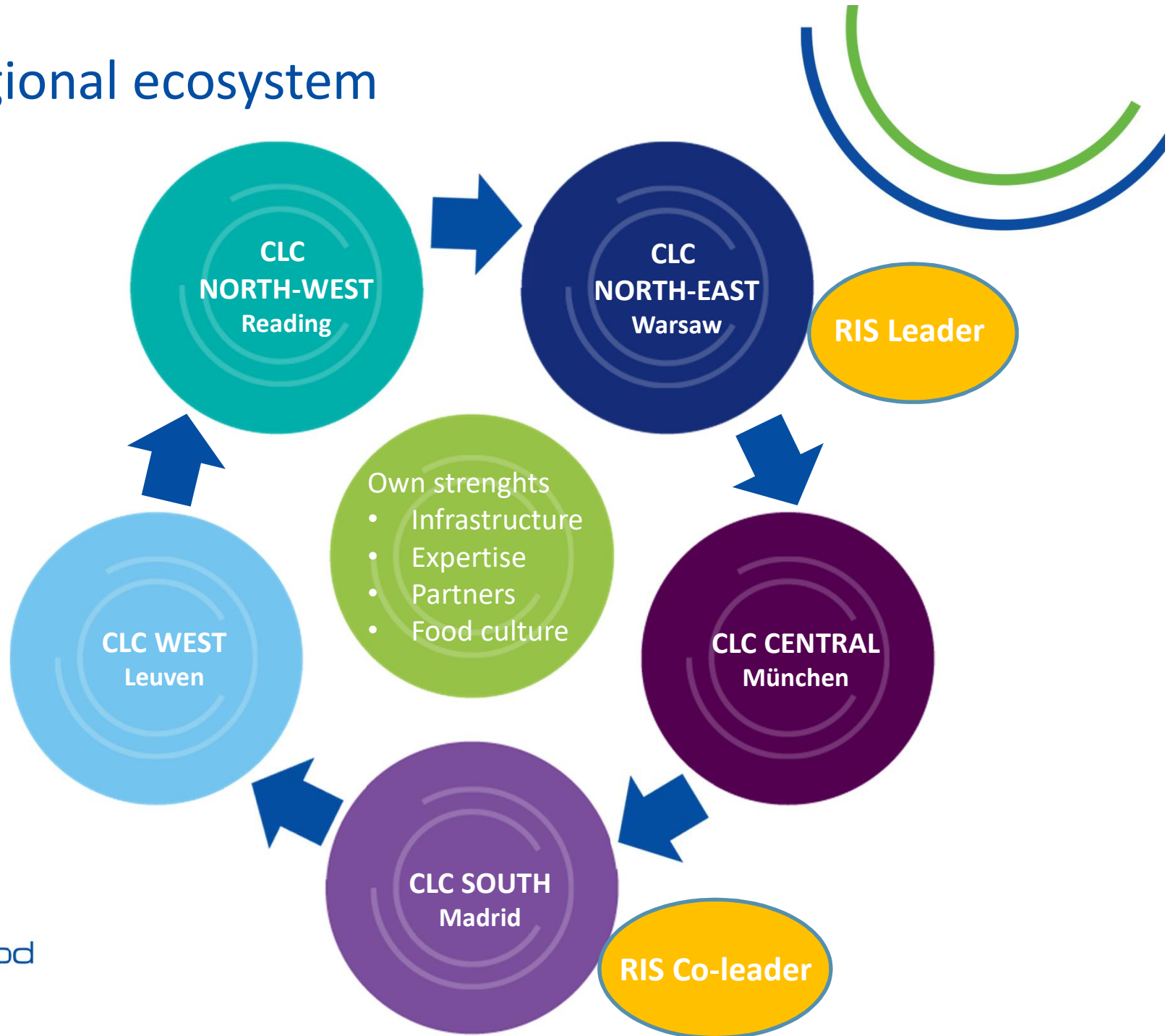


RisingFoodStars Members

- kontakt.io
- porphyrio
- naïo
- QualySense
- cropx
- GAMAYA
- GRAINSENSE
- PHENOSPEX
- nanoimmunotech
- GeoPuls
- inovo
- microbtion
- elea
- YASO
- TIPA
- Morphotonix
- MON POTAGER
- eskelo
- natural machines
- tellspec
- flatev
- FOODPAIRING
- agrilution
- BeYou
- FOOD MAESTRO
- entomics
- Foller
- bio-bean
- DAY TWO
- NURITAS
- PROTIX
- RouxMatok
- PROLysin
- DELTA
- GLUCANOVA



CLC regional ecosystem



RIS in EIT Food plans and activities

- RIS Strategy 2018-2020:
 - Targeted countries and regions: to work with and contribute to integrate their innovation capacities within the Knowledge Triangle
 - Portfolio of RIS instruments and projects adding value to operations of EIT Food and its partners (e.g. RIS Fellowships; Joint projects and pilots)
 - Outreach and mentoring activities for local players from RIS countries (e.g. Matchmaking for start-ups)
 - Necessary feedback on the proposed approach from stakeholders in RIS countries





Innovate with us!



EIT Food is supported by the EIT
a body of the European Union

begona.perezvillarreal@eitfood.eu

[@EIT_Food](#)