

The European Commission's science and knowledge service

Joint Research Centre



Collaboration Opportunities and Synergies between RIS3 and EIT-RIS

Stairway to Excellence (S2E)

**Nida Kamil Özbolat,
JRC.B3 Territorial Development**

Ljubljana, 20th of March 2018

Nida-Kamil.OZBOLAT@ec.europa.eu

JRC.B3 Territorial Development: S3 activities

Thematic Platforms

Agri-Food

Energy

Industrial

Modernisation

About our
methodology

Guidance

Design

Implementation

Additional Guidelines

Targeted Support

RIS3 in lagging
regions

RIS3 in REMTh

Digital Growth

Stairway to Excellence

S3 Cooperation

EU Macro-Regional
Strategies

Other Initiatives

S3 Beyond EU

S3 Worldwide

Communities & A...

Peer Reviews

Higher Education
Institutions

Other Actors

Governance

Entrepreneurial
Discovery Process

Monitoring



- EU Countries registered in S3P: 18
- EU Regions registered in S3P: 172
- Non-EU Countries registered in S3P: 4
- Non-EU Regions registered in S3P: 10
- S3P Peer-reviewed Countries: 15
- S3P Peer-reviewed Regions: 60

Targeted support to S3 implementation

Four complementary JRC activities

"Lagging" Regions

Stairway to Excellence

RIS3 Support
to Lagging
Regions

RIS3 Support
to Romania

Higher
Education in
Smart
Specialisation

Stairway to
Excellence

European
Parliament
DG REGIO

European
Parliament
DG REGIO

DG EAC

European
Parliament
DG REGIO

2016-2018

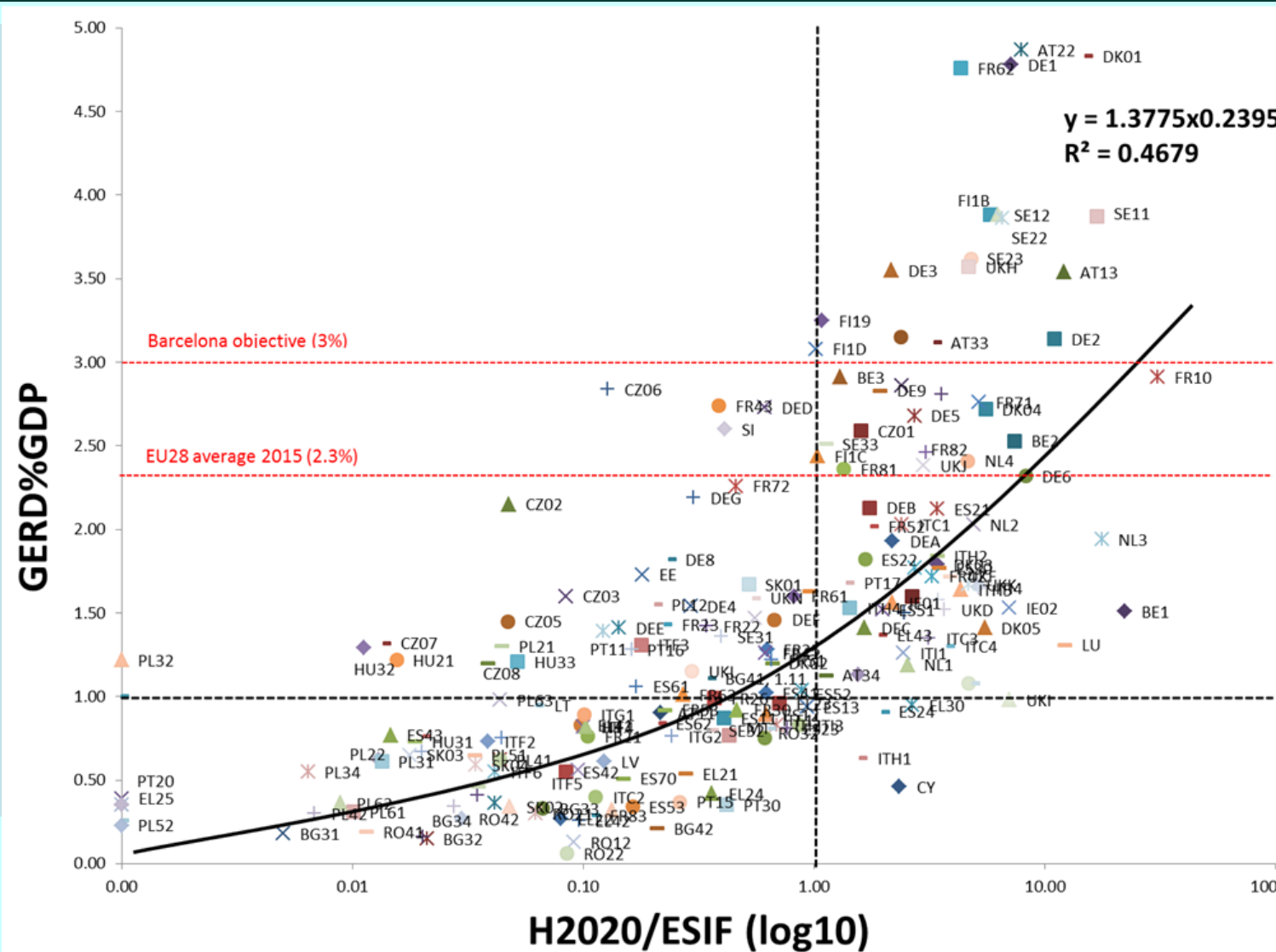
2016-2018

HESS2 - 2017-8

S2E -3 2017-8

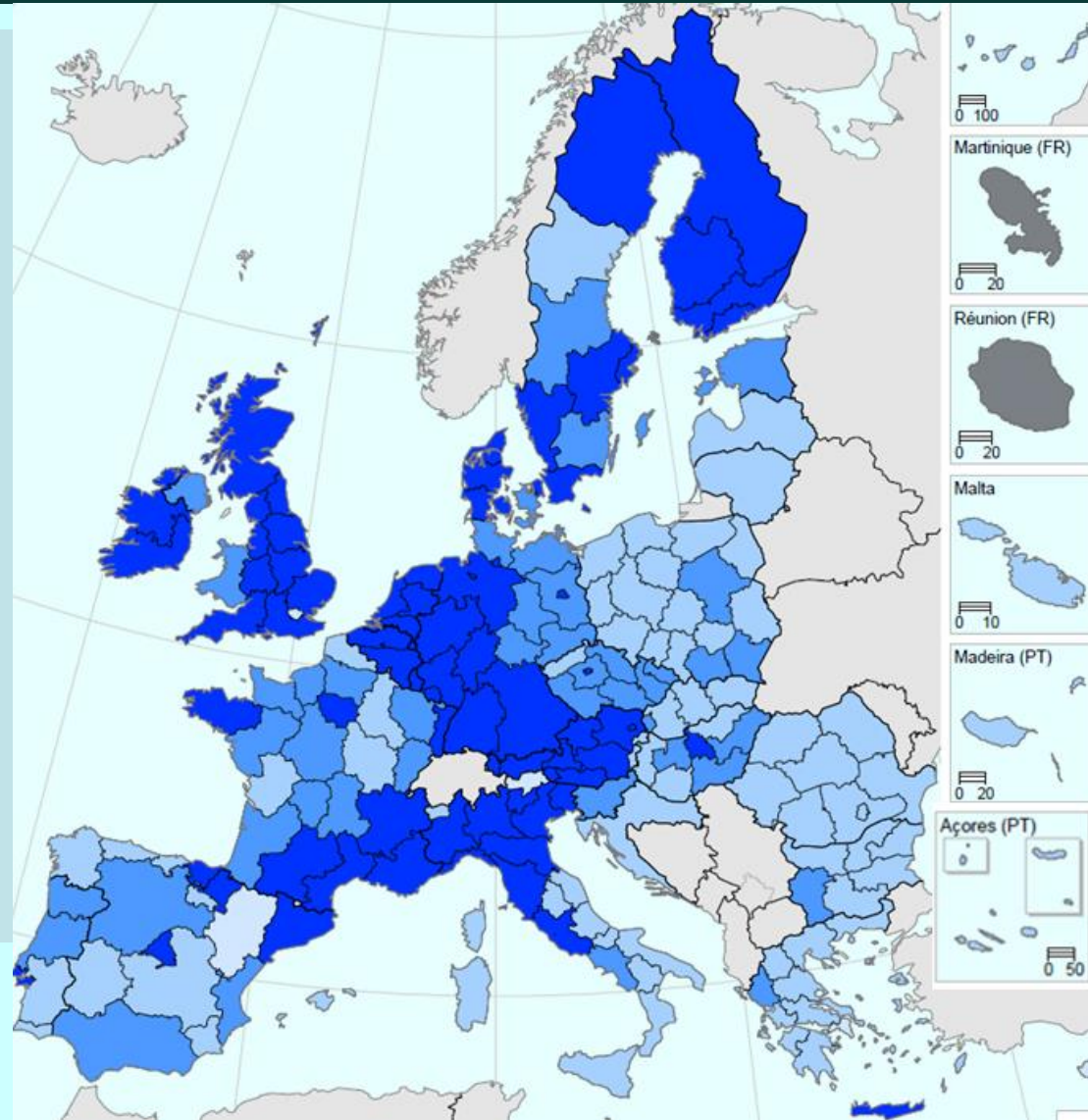


Funding context: Mapping EU Regions (1)

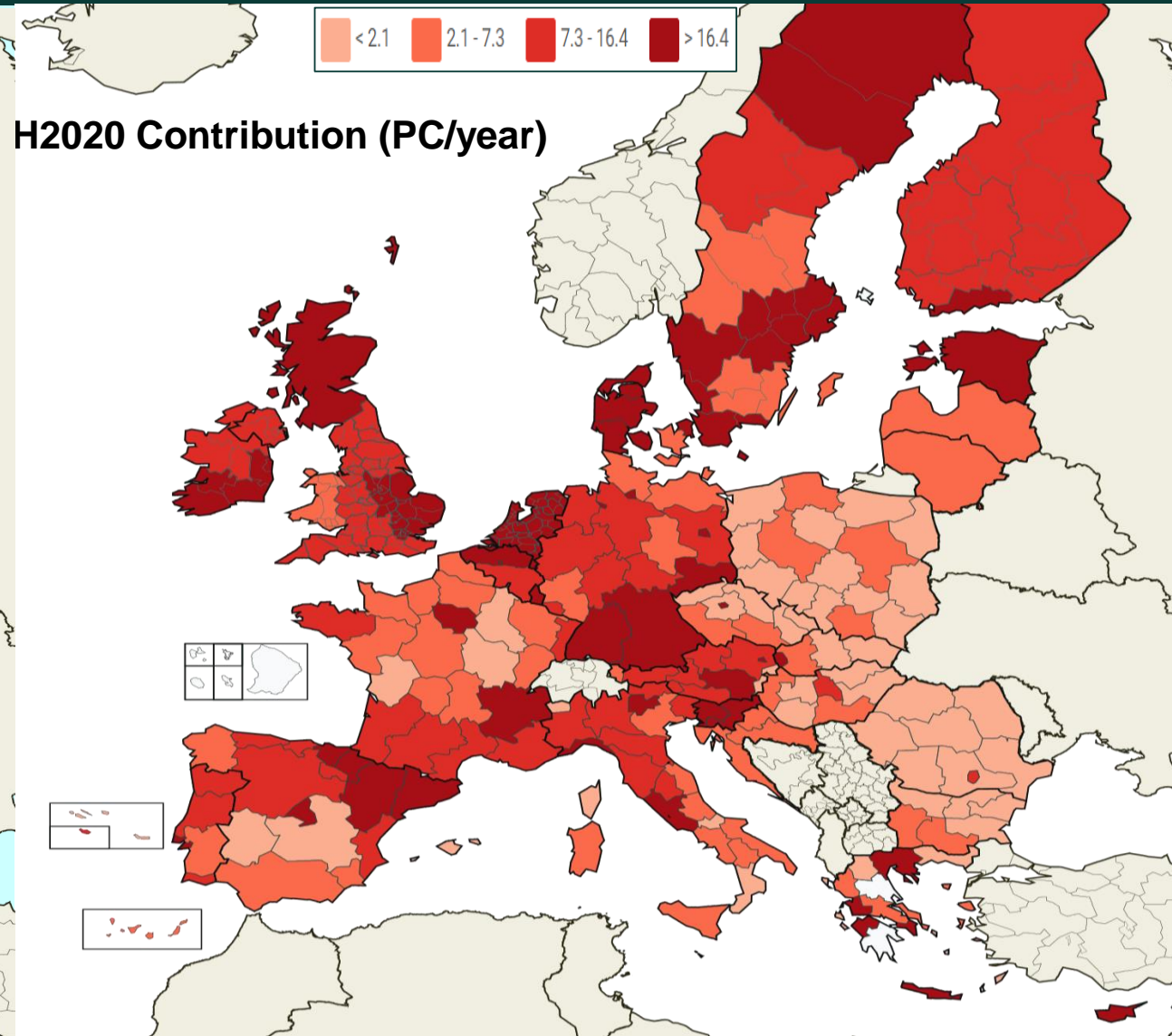
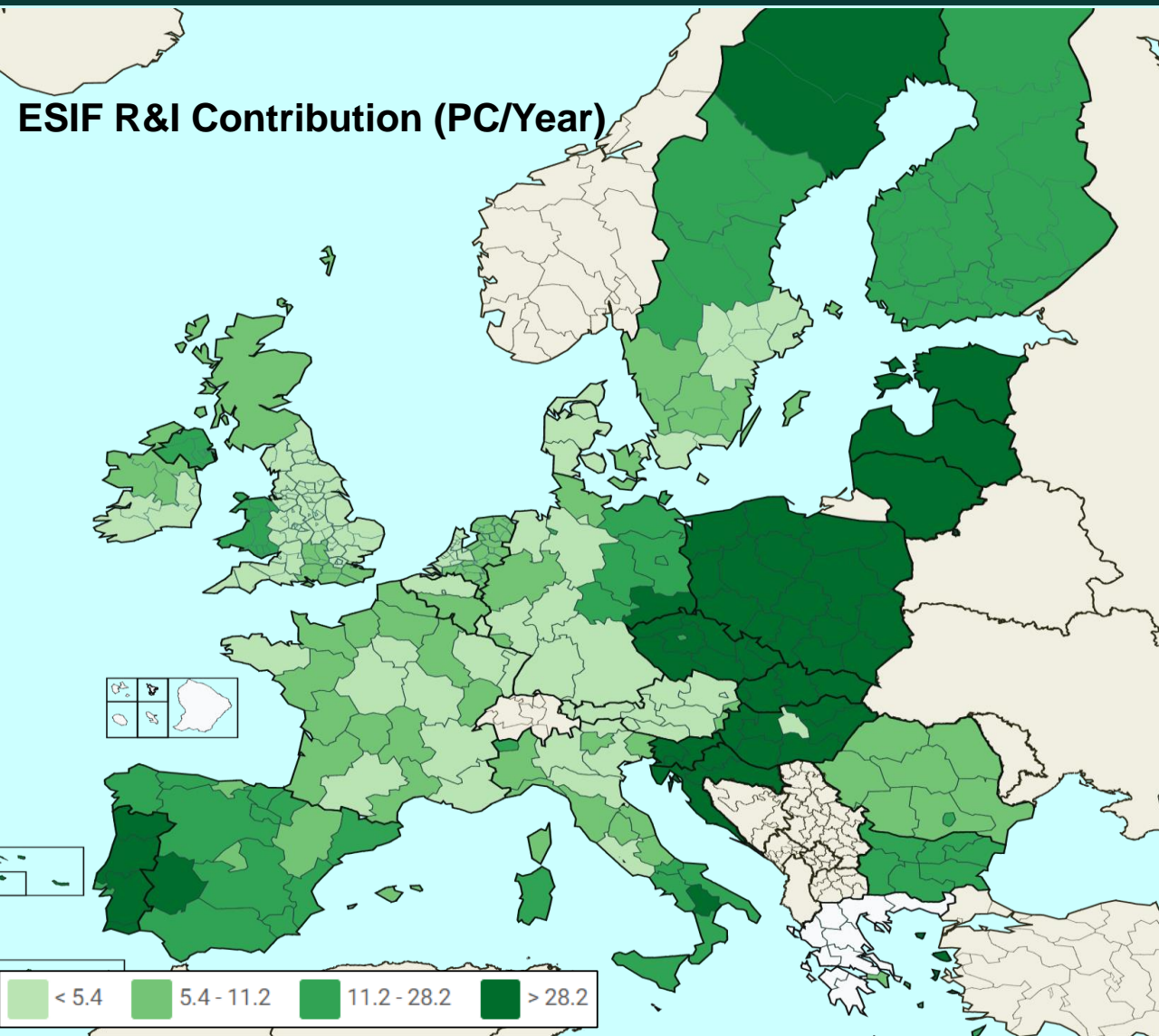


Funding context: Mapping EU Regions (2)

- Higher R&I intensity and H2020 dominance over ESIF
- Higher R&I intensity and ESIF dominance over H2020
- Lower R&I intensity and ESIF dominance over H2020
- Lower R&I intensity and H2020 dominance over ESIF



How to Address Innovation divide: Structural Funds VS H2020



Targeted Support to Territorial Development in a RIS3 context

Main issues hampering optimal capture of H2020 funding

Quality of governance

- Need for more participatory (RIS3) governance
- Administrative, legal and technical issues
- Structural bottlenecks in the R&I ecosystem
- Coordination problems

Capacity building

- Lack of qualified human resources
- Lack of business sector innovation capabilities and weak innovative entrepreneurship
- Lack of openness, weak integration in EU networks
- Lack of infrastructure

Innovation

- Weak links between academia/PROs and business
- Limited use of available funding for R&I
- Limited use of research infrastructures

Projects in place to address these issues

Enhance regional capacity - *Lagging Regions*

- Support implementation of RIS3
- Support EDP capacity and RIS3 governance
- Develop human resources and mobility

Access H2020 - *Stairway to Excellence Project*

- Train MAs to build capacities for to access H2020
- Collaboration between regions and EIT KICs (Regional Innovation Scheme)
- Collaboration between MSs/regions & Joint Undertakings

Support to universities - *HESS Project*

- Align higher education with regional economy
- Strengthen role of education in RIS3 and regional innovation systems

Stairway to Excellence I & II (S2E): 2014-2017

To support EU13 MSs and regions to develop and exploit synergies between EU funding sources

- **Policy Insights:**

- #1 on "*Lessons Learnt from S2E National Events*"
- #2 on "*EU13 Participation in International Science*"

- **National Policy Events & Joint Statements** – main challenges and possible actions in each EU13 MS

- **National and Regional "Facts and Figures" & "Country Reports"** for EU13 - empirical facts and analysis of R&I ecosystems

- **Synergy Examples** - cases of combined funding

- **R&I Regional Viewer** – visualisation of main economic and R&I indicators



<http://s3platform.jrc.ec.europa.eu/stairway-to-excellence>

S2E III - Closing the innovation gap & helping achieve excellence in EU MS & regions (extended to EU28)

Capacity building for increased H2020 participation

Training for MAs and RIS3 teams

International Project Development Labs

Governance of PROs

Multi-level governance of synergies

Exploring new scenarios for combining funding sources

Collaboration between MAs and JUs

Collaboration between MAs and KICs under RIS

Funding guidance

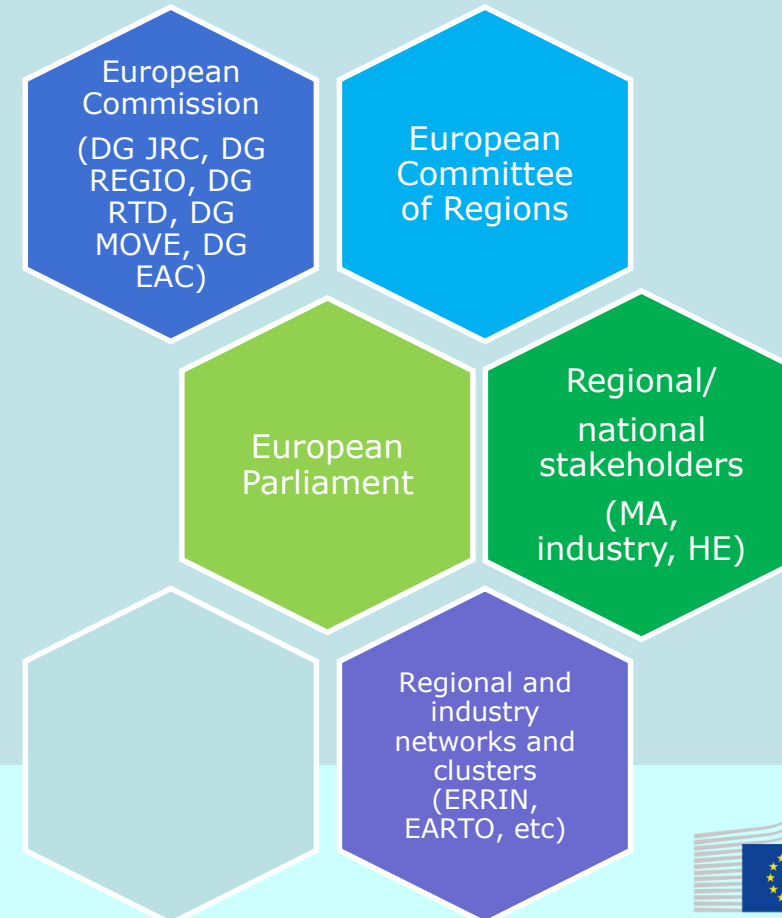
Explore other synergies

Main outcomes of joint event organised by Joint Undertakings and S2E

Developing synergies between Joint Undertakings (JUs) and ESIF for optimising RIS3 implementation- Brussels 7th March 2018

The aim was to understand mechanisms developed by JUs and regional/national authorities to create synergies between funds.

**180
PARTICIPANTS**



Developing synergies between Joint Undertakings (JUs) and ESIF for optimising RIS3 implementation- Brussels 07/03/2018



Regional partnerships



Synergies on concrete examples



Access to international networks



Concrete impact and results

JUs public-private partnerships and RIS3 EDP processes & partnerships mutually beneficial

Expectations for today

- How can EIT-KICs contribute to implementing RIS3 at national and regional levels?
- Connect ideas with money and align with RIS3 and/or EIT-RIS themes
- Technical aspects of synergies: financial rules, stakeholder engagement and commitment. How to launch complementary regional calls, barriers, innovative models of collaborating...?
- How to increase collaboration between industry, public sector and the research community?
- How to increase collaboration with business? How EIT KICs can help to this collaboration?
- Engage with the synergies between regions and EIT Climate-KIC partners
- How to stimulate "lagging regions" to join EU networks?
- How to support capacity building activities of regions? How to achieve more efficient governance systems? How to support MAs in the implementation process?

EU Funding Landscape (Energy)

CENTRALIZED

Connecting Europe Facility
Energy, transport, digital infrastructure (PCI)

LIFE
Environment and Climate Action

Marguerite Fund
2020 Fund for Energy, Climate Change, Infrastruct.

European Institute Technology: KICs
climate, InnoEnergy

European Energy Efficiency Fund

Horizon 2020

Fuel Cells and H2 JU

Clean Sky 2 JTI

SESAR JU

Shift 2 Rail JU

...

European Fund for Strategic Investments

SHARED MANAGEMENT

European Structural and Investment Funds

TO1: research and innovation

TO4: low-carbon economy

TO7: sustainable transport & infrastructure

ERDF
share
low-carb
economy

Cohesion
Fund

European
Social
Fund

EAFRD

EMFF

European funding sources for energy and transport
(non-official, non-exhaustive illustration)

TECHNICAL ASSISTANCE AND PROJECT DEVELOPMENT ASSIST.

JASPERS (Joint Assistance to Support Projects in European Regions)

ELENA (Europ. Local Energy Assistance Facility)

Two types of management

- Centralised management (by the European Commission)
- Shared management between the Commission and Member States
- More opportunities coming from national and private funding schemes

Funds for all;

- Capacity building (infrastructure, equipment, training, business support etc.).
- R&D activities (TRL 1 to 4)
- Technology development activities (TRL 4 to 7)
- Business development & Access to market programmes (TRL 7 to 9)

BANKS

EBRD

EIB

SPECIFIC BUDGET STREAMS

NER300 (NER400)

EURATOM Loan Facility

EURATOM research & training

ITER



iTHANK YOU!

Stairway to Excellence (S2E):

<http://s3platform.jrc.ec.europa.eu/stairway-to-excellence>