

EIT Climate-KIC and EIT Regional Innovation Scheme (EIT RIS) Opportunities



European Institute of Innovation and Technology

- The EIT is an independent body of the European Union set up in 2008 to spur innovation and entrepreneurship across Europe to overcome some of its greatest challenges.
- It brings together leading higher education institutions, research labs and companies to form dynamic cross-border partnerships – Knowledge and Innovation Communities, KICs - that develop innovative products and services, start new companies, and train a new generation of entrepreneurs.
- The EIT aims to increase the co-operation and integration between higher education, business and research to facilitate the transition from:



EIT is integral part of Horizon 2020

Knowledge & Innovation Communities (KICs)

EIT Climate-KIC



EIT Digital



EIT InnoEnergy



EIT Raw Materials



EIT Health



EIT Food

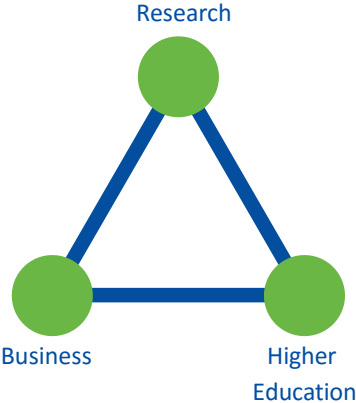


European Institute of
Innovation & Technology

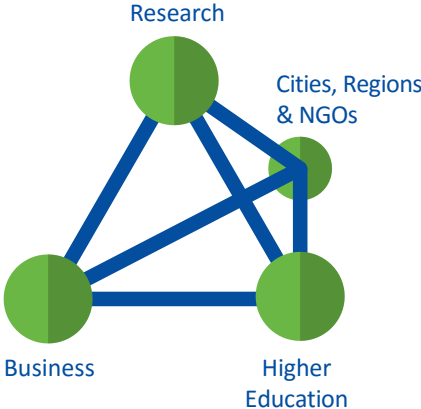
- 
- EIT Climate-KIC is a European **knowledge and innovation community** working to accelerate the transition to a **zero-carbon economy** through **whole systems** transformation

EIT Climate-KIC is part of the European Institute of Innovation and Technology (EIT) and the EIT community. We are one of six KICs acting together as global innovation leaders, delivering world-class solutions to societal challenges.

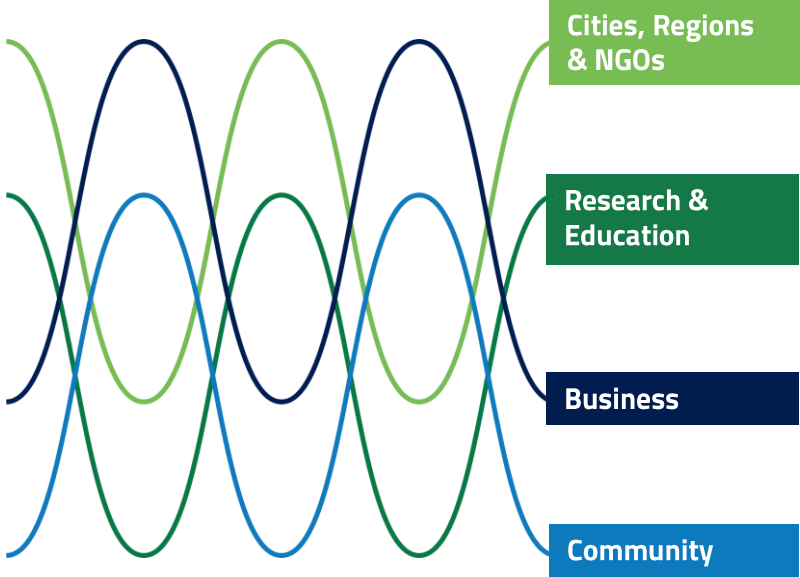
Systemic innovation through knowledge integration



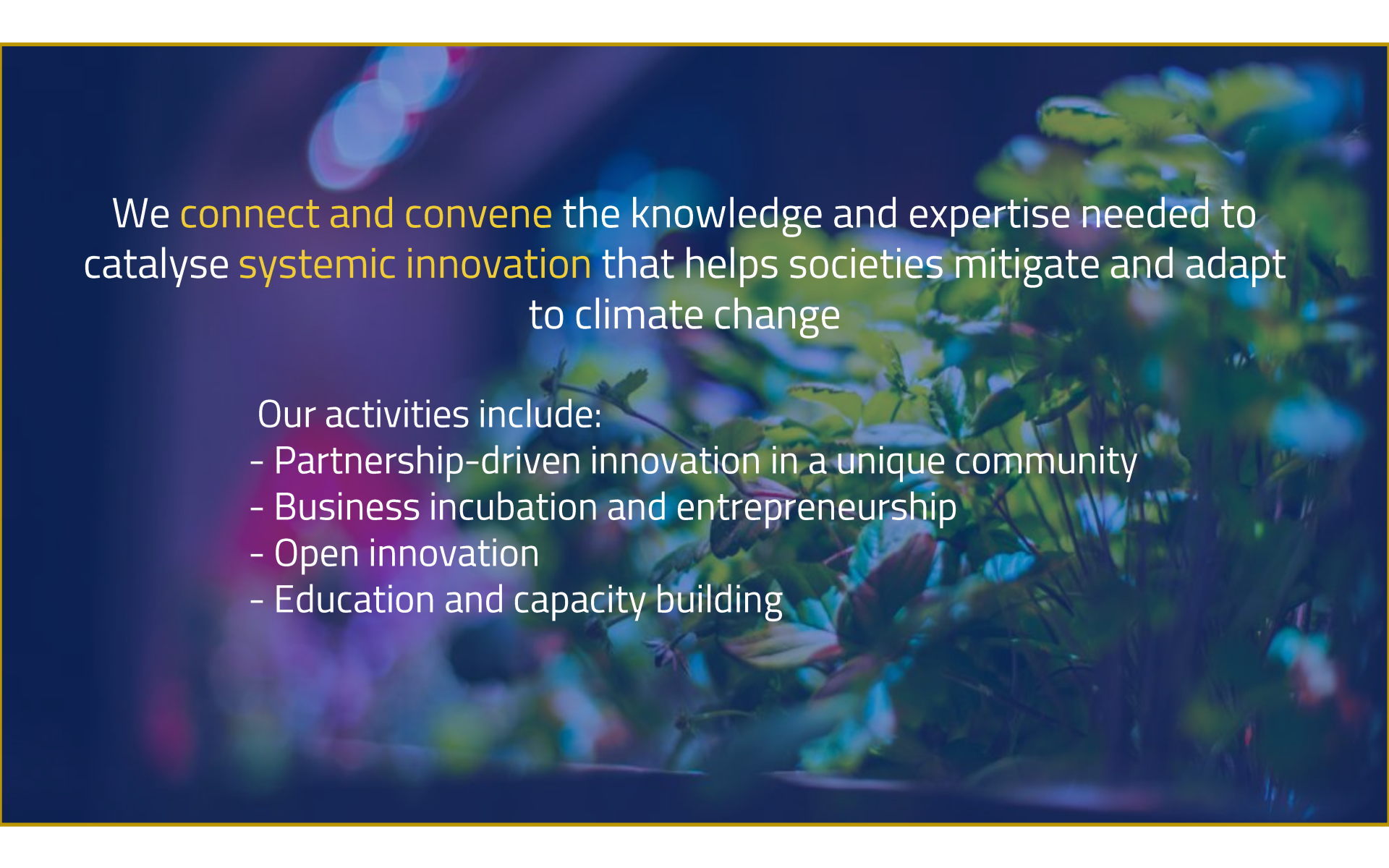
Knowledge triangle



Knowledge tetrahedron



Knowledge quadruple helix



We **connect and convene** the knowledge and expertise needed to catalyse **systemic innovation** that helps societies mitigate and adapt to climate change

Our activities include:

- Partnership-driven innovation in a unique community
- Business incubation and entrepreneurship
- Open innovation
- Education and capacity building

A group of approximately ten people are seated around a large wooden conference table in a meeting room. They are engaged in a discussion, with some looking at laptops and others at documents. The room has a blue-tinted lighting. On the table, there are several books and documents, including one titled 'Good things' and another with 'CIRCLE' on the cover. The background shows a wall with various notices and a bulletin board.

Our **network of partners** includes the brightest minds, the most dynamic **companies**, the **most strategic thinkers** and the most forward thinking **cities** and **public authorities** committed to climate action and deep decarbonisation through innovation.

Our community comprises SMEs and larger corporations, start-ups, graduate students, researchers, scientists, cities, public authorities, NGOs and more.

The EIT Climate-KIC Partnership Community



Innovation areas

We develop innovation across sectors with the most potential for environmental gain and continued prosperity



Urban Transitions



Sustainable Land Use

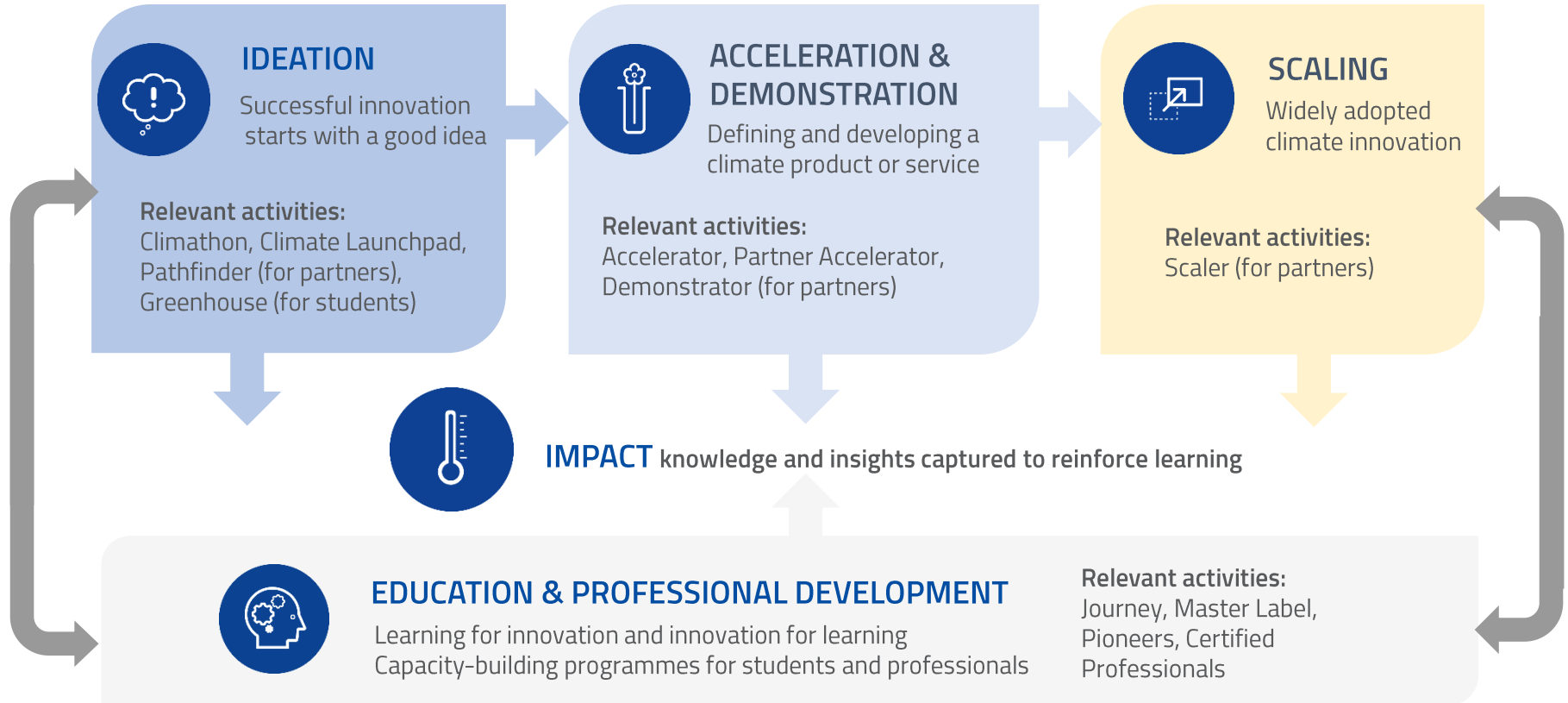


Sustainable Production Systems



Decision Metrics and Finance

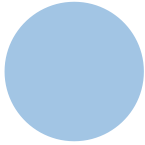
End-to-end innovation



Countries covered by EIT Climate-KIC programming in 2018



Countries covered by Climate-KIC Geographies



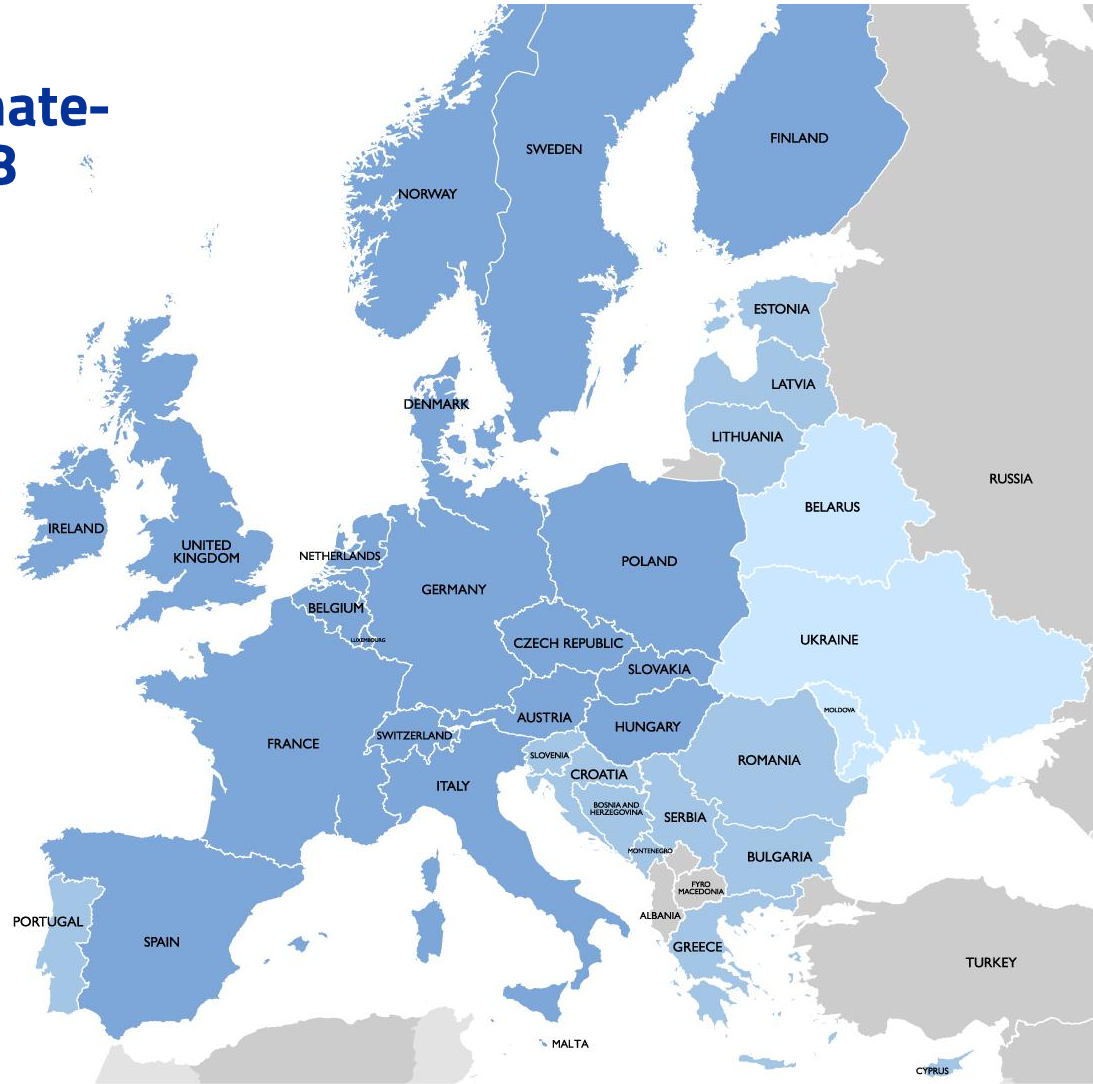
Countries in EIT Regional Innovation Scheme (EIT RIS) programme



Countries covered by the LEDS Europe and Eurasia Partnership



ICELAND



EIT RIS in a Nutshell

- The EIT RIS is the **EIT Community's outreach scheme**. (introduced in 2014). The scheme enables the transfer of good practices and know-how from the EIT's unique approach to boosting innovation.
- EIT RIS is **implemented by all current six KICs**
- Contributes to enhancing of the innovation capacity in **moderate and modest innovators** (according to European Innovation Scoreboard) Member States and H2020 Associated Countries
- Eligible countries:

EU Member States: Bulgaria, Croatia, Cyprus, Czech Republic, Estonia, Greece, Hungary, Italy, Latvia, Lithuania, Malta, Poland, Portugal, Slovakia, Slovenia, Spain, Romania

H2020 Associated Countries in Europe: Albania, Armenia, Bosnia and Herzegovina, Faroe Islands, Former Yugoslav Republic of Macedonia, Georgia, Moldova, Montenegro, Serbia, Turkey, Ukraine

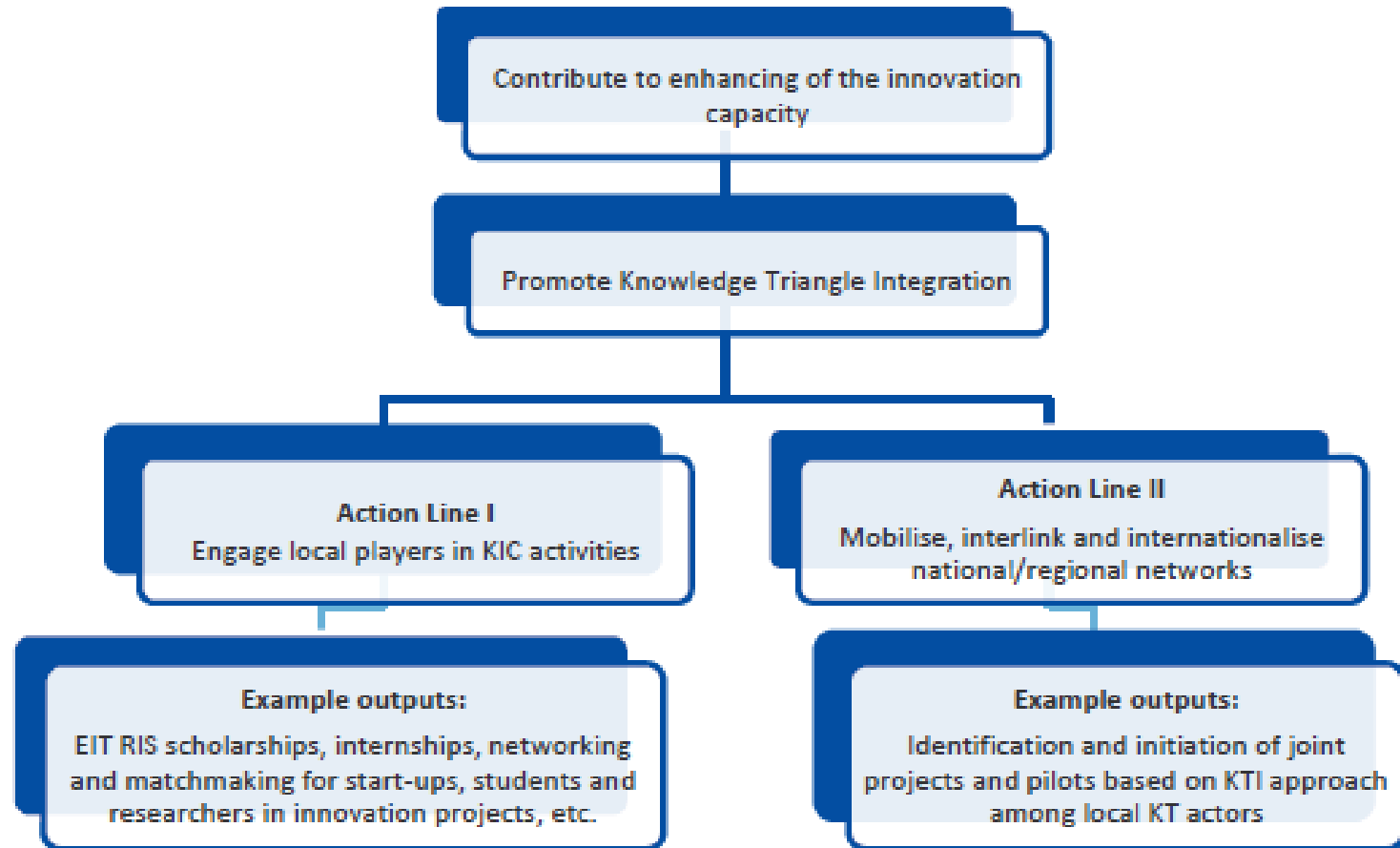


**EIT Community
Regional Innovation
Scheme**



**Unlocking Europe's
potential for innovation**

EIT RIS Intervention Logic

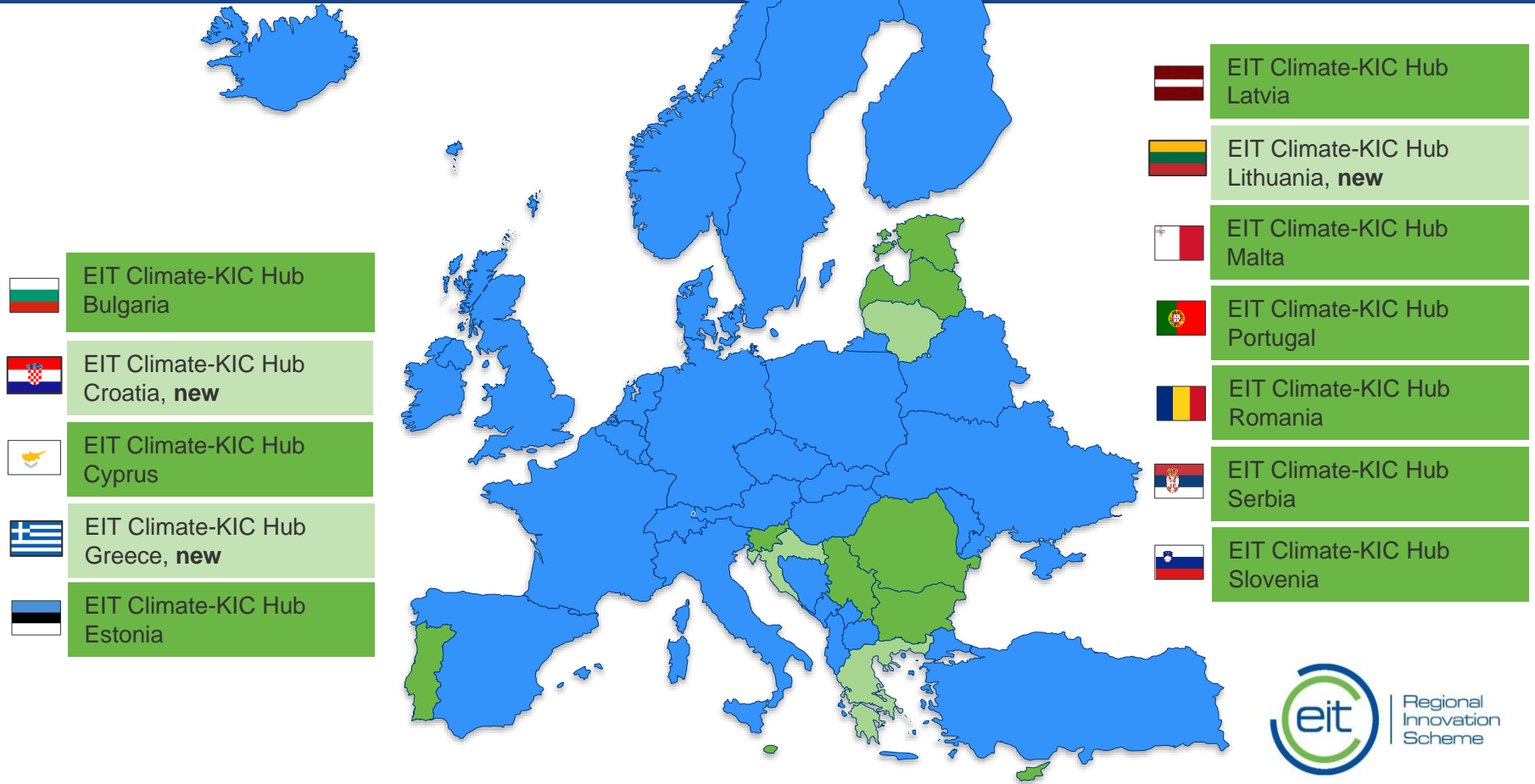


Our Value Proposition

- **Stimulate low carbon innovation** in countries, regions and cities and significantly boost their capacity to implement the highest impact ideas
- Opportunity to become part of a community of leading climate change innovators (**'community of practice'**)
- **Boost local stakeholders' role as multipliers of knowledge and expertise**
- **Reinforce synergies and complementarities** with EU, national, regional innovation initiatives and funding sources
- **Spearhead development of relationships with countries/regions** using their **Smart Specialisation Strategies** and develop and activate large-scale "green" projects targeting ESIF and ERDF provision



EIT Climate-KIC RIS Geographic Footprint 2018-20



Our Partners and Collaborating Entities



and more...!

Scaling impact across Europe

The EIT Regional Innovation Scheme (EIT RIS) is a dedicated programme to scale EIT Climate-KIC's impact and boost innovation capacity across Europe

In all EIT RIS countries we work with selected local partners to set up **EIT Climate-KIC Hubs** to serve as entry points for interacting with local players, mobilising and internationalising local networks as well as facilitating Knowledge Triangle Integration



EIT Climate-KIC Hubs

- Hubs have a strong footing in local ecosystem and help promote good practices and know-how
- Hubs should be composed of several organisations across the Knowledge Triangle
- Entry point for both sides



- Interface for interacting with local players, mobilising and internationalising the local networks, and ultimately fostering KTI
- Hubs are to act as “platforms[s] for interaction and brokerage”

Priority Topics 2018-2020

Focus areas aligned with EIT Climate-KIC Impact Goals, EIT RIS country needs and S3 priorities to achieve **maximum impact** (as per our EIT RIS 2018-2020 Strategy)



Expansion Call open until April 10th



**EIT Climate-KIC Hubs in
Croatia, Greece and
Lithuania**

Apply by April 10th 2018



CALL FOR APPLICATIONS