

LEARNING LAB ON "SUPPORTING MECHANISMS FOR CAPACITY BUILDING IN FRAMEWORK PROGRAMME PARTICIPATION (H2020/HORIZON EUROPE)"

CREATING THE POLICY FRAMEWORK

Geraint Green

Head of Research and Innovation Branch

Welsh European Funding Office, Welsh Government, UK



STRATEGIC CONTEXT / PROGRAMMING



CONCENTRATION

Fewer things in fewer places for greater impact. *Targeting via Smart Specialisation*



INTEGRATION

Better joining up between funds and wider investments
Economic Prioritisation Framework



IMPACT

Emphasis on specific results to be delivered. *Intervention Logic*

HORIZON 2020 UNIT

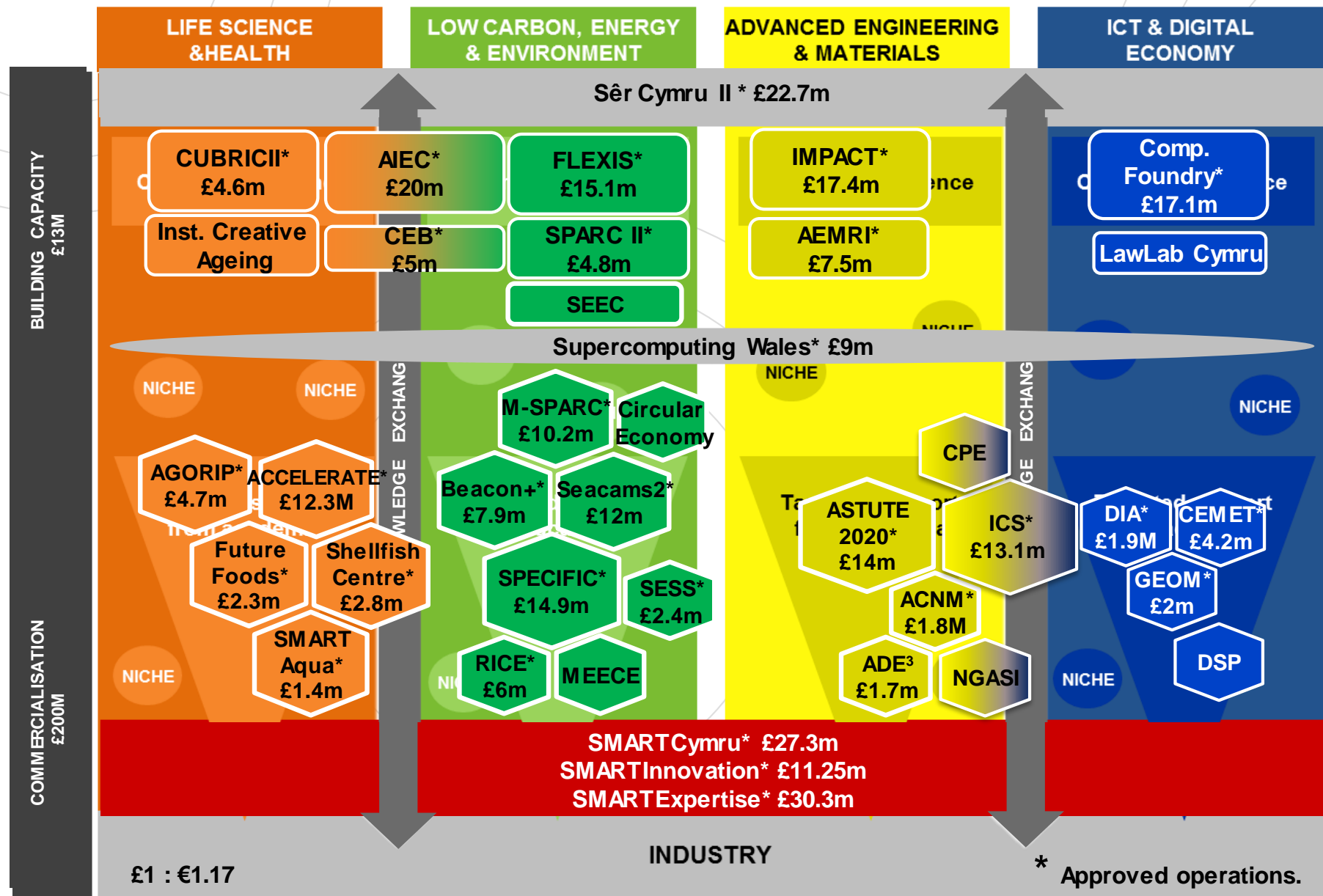
- A central contact point for all Welsh organisations
- General advice and support on accessing the most appropriate R&I funding from the EU
- Co-ordinating, facilitating and influencing role
- Small teams in North and South Wales
- Building on existing relationships with Welsh Government Departments, the European Commission, Higher Education and those representing business needs
- Located in Structural Funds Managing Authority – maximising opportunities for synergy with the Structural Funds
- New resources and ambition to ‘raise the game’ in Wales



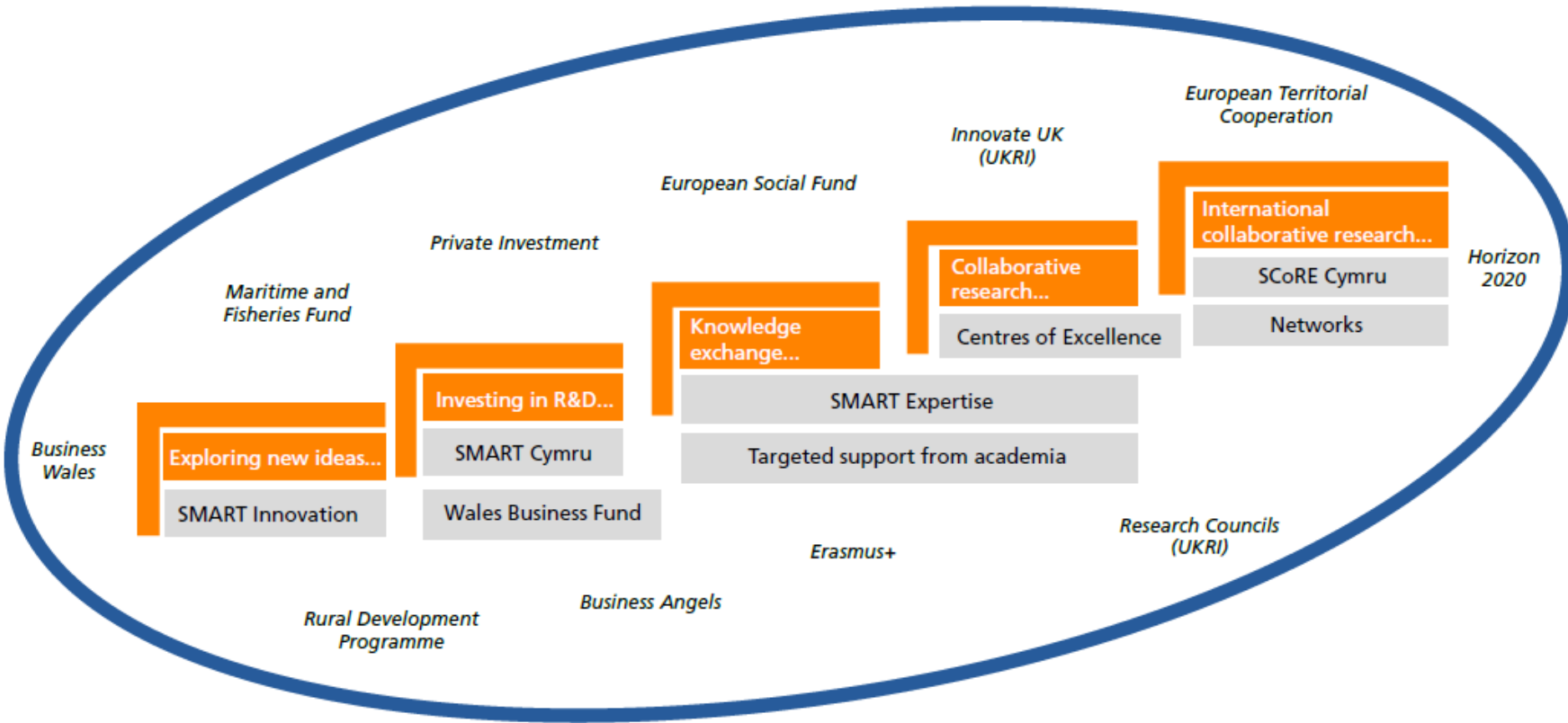
Key Objectives:

- Build a ‘stairway to excellence’
- Increase the engagement and success of businesses
- Develop a Horizon 2020 culture and community in Wales
- Maximise the impact of existing and emerging support
- Support and develop our experts & evaluators

RESEARCH & INNOVATION PORTFOLIO



BUILD A STAIRWAY TO EXCELLENCE



Key

- Main stages in the stairway to excellence
- Direct supporting activity mostly supported through the European Regional Development Fund
- Wider support environment

EXAMPLES OF SYNERGIES (1)

**European Regional
Development Fund
(ERDF)
€26.5m**



**Horizon 2020 Marie
Skłodowska-Curie
Actions (MSCA)
COFUND scheme
€9.5m**

SÊR CYMRU II

**Lead:
Welsh Government**

**Value:
€65m inc. match funding**



A suite of complementary schemes aimed at developing the next generation of talented researchers in Wales and attracting international research fellows.

Common processes between projects, e.g.:

- Independently appointed Evaluation Panel of international scientists and researchers rank all applications
- Same project team and approval process

EXAMPLES OF SYNERGIES (1)

SÊR CYMRU II EXPECTED OUTCOMES



€25.5m

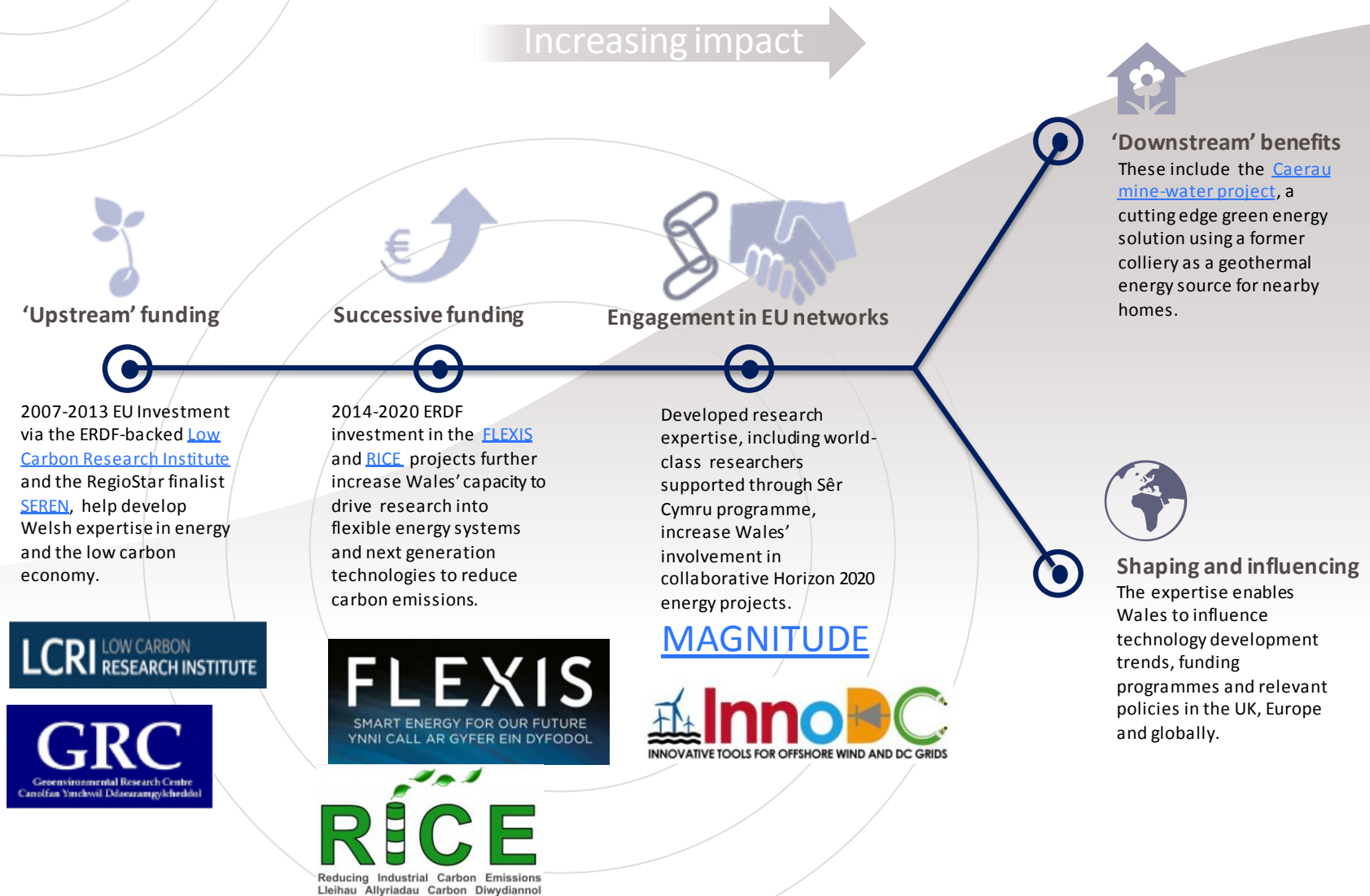
ADDITIONAL RESEARCH INCOME

155

NEW RESEARCHERS IN WALES

EXAMPLES OF SYNERGIES (2)

WELSH EXPERTISE DRIVES SOCIETAL CHANGE



A new integrated regional policy for Wales and an active partner in Europe



- Build on the legacy of decades of Wales' partnership with the EU.
- Take the best of the European Structural and Investment funds, and adapt for Wales
- Opportunities for greater flexibility, proportionality, simplification, integration, single funding stream, etc.
- Call for UK participation in collaborative programmes like Horizon Europe, ERASMUS+, Creative Europe, and the European Territorial Cooperation programmes.
- Wales is – and will continue to be – an outward looking country. Seeking to maintain and build upon partnerships and networks across the EU.

THANK YOU

Find out more:

EU FUNDS IN WALES:

Email: Enquiries-WEFO@gov.wales

Call: +44845 010 3355

Website: <https://gov.wales/funding/eu-funds/?lang=en>

HORIZON 2020 IN WALES:

Email: horizon2020@gov.wales

Call: +44845 010 3355

Visit: <http://gov.wales/funding/eu-funds/horizon2020>

UNDEB
EWROPEAIDD
EUROPEAN
UNION



RegioStars Winner
2008, 2009, 2011 & 2014



EU Regional Policy
Regions of Excellence
Winner 2011

LEARNING LAB ON "SUPPORTING MECHANISMS FOR CAPACITY BUILDING IN FRAMEWORK PROGRAMME PARTICIPATION (H2020/HORIZON EUROPE)"

NATIONAL/REGIONAL ACTIVITIES

Geraint Green

Head of Research and Innovation Branch

Welsh European Funding Office, Welsh Government, UK



HORIZON 2020 UNIT

- A central contact point for all Welsh organisations
- General advice and support on accessing the most appropriate R&I funding from the EU
- Co-ordinating, facilitating and influencing role
- Small teams in North and South Wales
- Building on existing relationships with Welsh Government Departments, the European Commission, Higher Education and those representing business needs
- Located in Structural Funds Managing Authority – maximising opportunities for synergy with the Structural Funds
- New resources and ambition to ‘raise the game’ in Wales

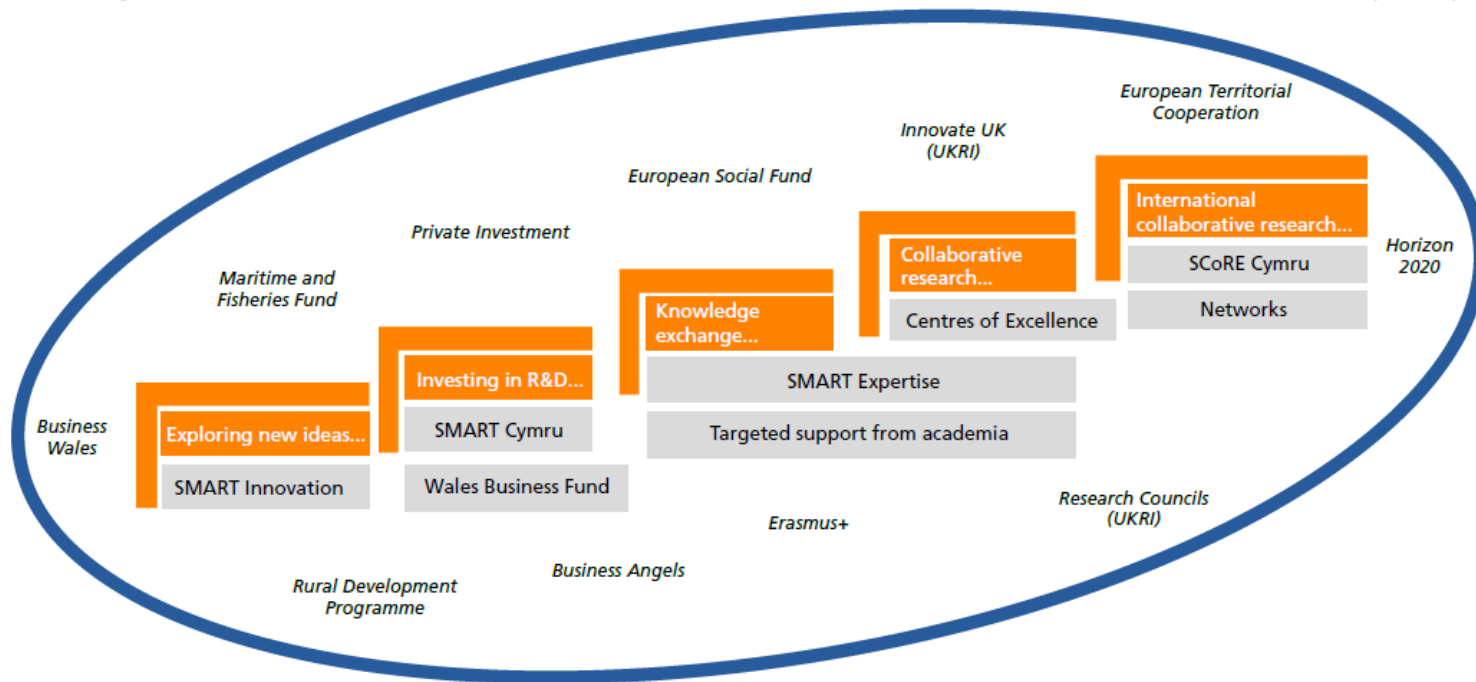


Key Objectives:

- Build a ‘stairway to excellence’
- Increase the engagement and success of businesses
- Develop a Horizon 2020 culture and community in Wales
- Maximise the impact of existing and emerging support
- Support and develop our experts & evaluators

HORIZON 2020 UNIT – KEY OBJECTIVES

Objective 1: Build a 'stairway to excellence'



Key

■ Main stages in the stairway to excellence

■ Direct supporting activity mostly supported through the European Regional Development Fund

■ Wider support environment

Objective 2: Increase the engagement and success of businesses



Welsh SME **IMSPEX Diagnostics Ltd's** application for Horizon 2020 funds, supported by SCoRE Cymru, went on to secure **€1.5m** to lead a European project to revolutionise the way respiratory illnesses are diagnosed.



HORIZON 2020 UNIT – KEY OBJECTIVES

Objective 3: Develop a Horizon 2020 culture and community in Wales



HORIZON 2020 UNIT – KEY OBJECTIVES

Objective 4: Maximise the impact of existing and emerging support



Objective 5: Support and develop our experts & evaluators

Benefits of being a Horizon 2020 Expert/Evaluator

The community of practice of Welsh Horizon 2020 experts and evaluators has produced informal guidance for the Horizon 2020 community in Wales to promote and enhance the benefits of being an evaluator.

What is an expert/evaluator?

The European Commission appoints independent experts to assist with innovation assignments including the evaluation of proposals, monitoring of programmes and design of policy.

Anyone can register as an expert if they have a high level of expertise in their field and can be available for occasional, short-term assignments. Evaluations usually consist of short sessions lasting around 10 days, carried out remotely (i.e. at the evaluator's home or place of work) or in person. Luxembourg for some innovation actions.

As an expert/evaluator you are entitled to a fee of EUR 450 for each day of travel expenses (to and from the place of meeting) as well as subsistence expenses.

You can register under your own initiative (see the [Expert and Evaluator Register](#)) or through a third party. There is no need or advantage to being recommended by an organisation in making your organisation aware of your involvement.

Benefits of being an expert/evaluator

- Gaining invaluable knowledge and experience on the project and the wider context – it will complement a wide range of other activities.
- Evaluators gain knowledge and confidence in their own expertise and seeing a range of applications that you wouldn't otherwise see.
- It is a great opportunity to meet useful contacts from other Member States and regions.
- As an evaluator, you will have an input in the way the project is implemented and networks which can then be used to learn more about research across the wider world.

Hints and tips for Welsh Horizon 2020 applicants

There is a significant amount of skills, experience and expertise on Horizon 2020 in Wales. The community of practice of Welsh Horizon 2020 experts and evaluators is one example of how this expertise is being used to impart practical advice and informal guidance to the wider community in Wales.

Here is the community of practice's top 5 practical tips for potential Horizon 2020 applicants:

- 1. Know what you are looking for and start looking...**

Horizon 2020 work programmes offer a range of funding opportunities through a variety of topics and calls for proposals. Take time to acquaint yourself with the Horizon 2020 Participant Portal, scan for upcoming opportunities of interest and start to immerse yourself in the EU funding system. The [National Contacts Points](#) can assist you with this and the [Horizon 2020 Unit](#) may be able to put you in touch with others in Wales who are working in your topic area.
- 2. Study the call carefully and plan ahead...**

Once you have identified a relevant call it's crucial that you start your preparation as early as possible. Before committing pen to paper thoroughly study the content of the published call as well as the introduction pages of the Work Programmes to see how your project fits with the wider context. Read all accompanying documentation, understanding the milestones and necessary timescales, and start planning now!
- 3. Develop a strong consortium...**

Funding for research and innovation actions requires consortia of partners from different countries, industry and academia. Invest time to develop diverse partnerships with the necessary blend of international representation and know-how, achieving a gender balance within research teams is also beneficial. Available sources of support include:

 - The centres of excellence supported by the European Regional Development Fund may offer opportunities for collaboration and support (ask the Horizon 2020 Unit for details);
 - The [SCORE Cymru scheme](#), which supports the costs of travel in the UK, Europe and beyond to meet potential partners and strengthen existing relationships;
 - The [Enterprise Europe Network \(FEN\)](#) can help find and connect you with potential business partners across Europe;

HORIZON 2020
MSCA
IN WALES

- WHAT IS MSCA →
- MSCA IN WALES →
- MSCA TYPES →
- INDIVIDUAL FELLOWS →
- WALES MSCA SUMMER SCHOOL →

MSCA Summer School

<https://youtu.be/XoG TOAy6Vo>

REMOVING BARRIERS: SCoRE CYMRU

Supporting **C**ollaborative **R**esearch and innovation in **E**urope

- Grants to support Welsh-based organisations with the costs of accessing EU programmes such as Horizon 2020
- Supports travel to meet potential partners and bid writing costs



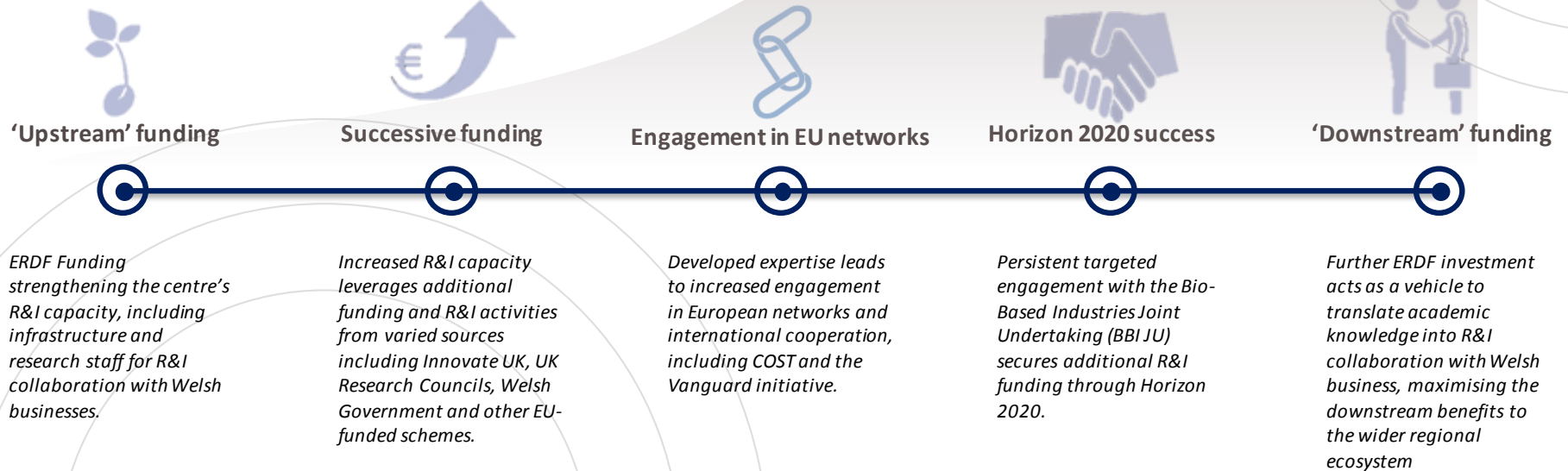
£0.4
m

€5.3
m

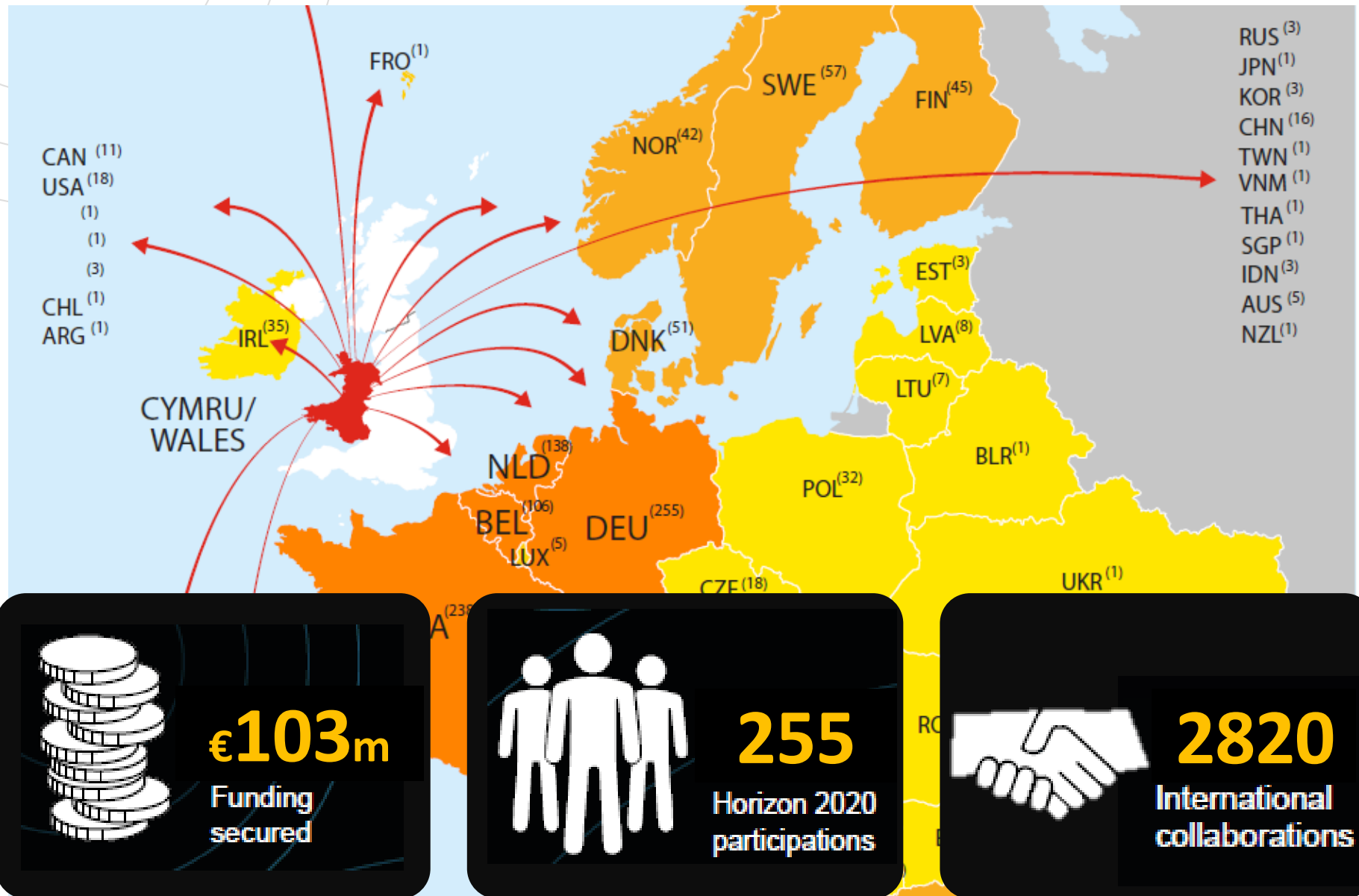
INVESTED SCoRE CYMRU **YIELDED**

HORIZON 2020 UNIT – BIOCOMPOSITES, BANGOR UNIVERSITY

Increasing impact



HORIZON 2020 SUCCESS TO DATE



A new integrated regional policy for Wales and an active partner in Europe



- Build on the legacy of decades of Wales' partnership with the EU.
- Take the best of the European Structural and Investment funds, and adapt for Wales
- Opportunities for greater flexibility, proportionality, simplification, integration, single funding stream, etc.
- Call for UK participation in collaborative programmes like Horizon Europe, ERASMUS+, Creative Europe, and the European Territorial Cooperation programmes.
- Wales is – and will continue to be – an outward looking country. Seeking to maintain and build upon partnerships and networks across the EU.

THANK YOU

Find out more:

EU FUNDS IN WALES:

Email: Enquiries-WEFO@gov.wales

Call: +44845 010 3355

Website: <https://gov.wales/funding/eu-funds/?lang=en>

HORIZON 2020 IN WALES:

Email: horizon2020@gov.wales

Call: +44845 010 3355

Visit: <http://gov.wales/funding/eu-funds/horizon2020>

UNDEB
EWROPEAIDD
EUROPEAN
UNION



RegioStars Winner
2008, 2009, 2011 & 2014



EU Regional Policy
Regions of Excellence
Winner 2011