

**Preparing for the next programming period (2021-27): Strengthening
RIS3 Governance and Entrepreneurial Discovery Process**



The Entrepreneurial Discovery Processes in Centro Region of Portugal

Chios, 29 November 2019
Sophie Patrício, CCDRC

CCDRC



Two different structures

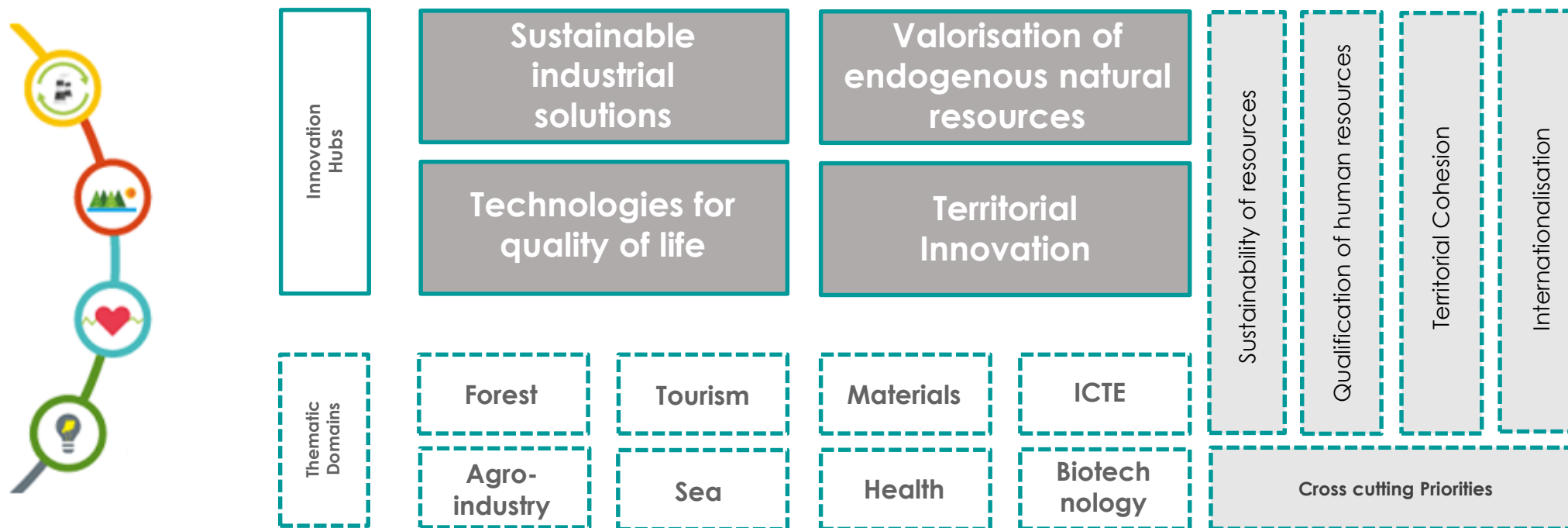
- 1) Regional Operational Programme
- 2) RIS3 team → development and monitoring the RIS3 and assessment of the alignment of projects with investment in the region (TO1 and TO3) with the regional strategy
 - ❖ more than 6000 projects analysed





Centro Region

- **Population:** 2.243.934 inhabitants (22% of PT)
- **Number of municipalities:** 100
- **Area:** 28.199 km² (31% of PT):
 - Privileged location
 - Balanced network of medium-sized urban centres
- **GDP per capita in PPS:** 66,6 (EU28 = 100)

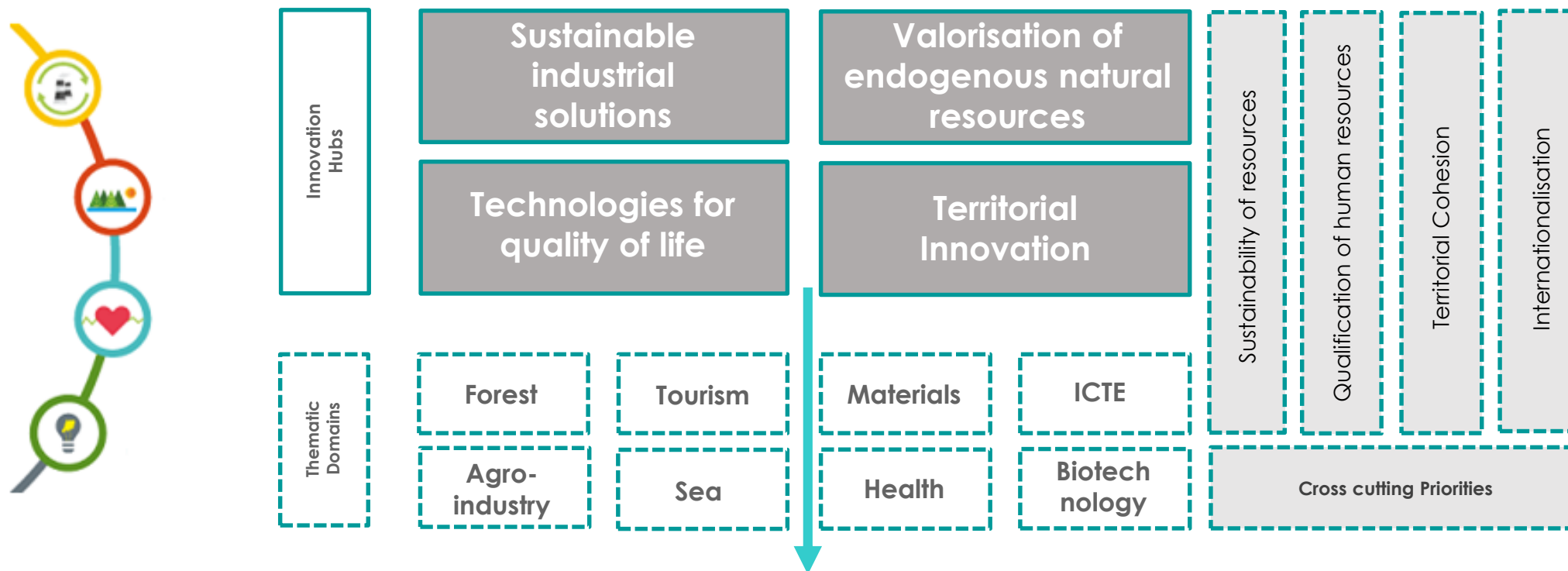
- **Exports:** 10.670 million euros (19,4% of PT)
- **Number of companies:** 261.971 (21% of PT):
 - More than 99% are SMEs
 - 1,6% in high and medium-high technology sectors
 - Diversified regional productive structure

Centro Smart Specialisation Strategy



Innovation Hubs		Lines of Action
 <p>1) Sustainable industrial solutions</p>	<p>Promotion of sustainable materials, products and processes leading to a new industry as a reply to societal challenges such as the efficient use of resources, circular economy, mitigation of climate changes and Industry 4.0.</p>	<p>1.a) Development of processes, materials and sustainable systems with greater added value for the Centro Region 1.b) Efficient use of resources and reduction of productive processes' impact on the environment 1.c) Industrial modernisation through circular economy 1.d) Industrial modernisation through "Production centred on the human being" 1.e) Valorisation of advanced and/or emerging technologies in higher added-value eco-innovation processes, products and systems</p>
 <p>2) Valorisation of endogenous natural resources</p>	<p>Valorisation of endogenous resources, mapping and preserving them as well as creating new added value products for different sectors. Monitoring and integrated management of endogenous resources.</p>	<p>2.a) Conservation and sustainability of natural endogenous resources 2.b) Monitoring and integrated management of natural endogenous resources 2.c) Development of products, processes and services with a view to boosting value chains associated with natural endogenous resources.</p>
 <p>3) Technologies for quality life</p>	<p>Development of technologies and solutions for health prevention, diagnosis and new treatments. Healthy and active ageing solutions. ITC systems development. Welfare and health tourism, integrated offer.</p>	<p>3.a) Development of innovative preventive health actions and systems 3.b) Development of innovative actions and systems that facilitate early diagnosis in health 3.c) Development of new treatments and therapies (e.g. cellular, genetic, biological, pharmacological, regenerative) 3.d) Development of innovative actions and systems that promote active and healthy ageing, conducive to independent living, that run through the different care networks (health care and social support) 3.e) The adoption of platforms to cultivate interoperability between systems, enhancers of citizen-centred solutions 3.f) Promotion of actions to reinforce the commitment to Health and Wellness Tourism</p>
 <p>4) Territorial Innovation</p>	<p>Territory innovation projects development from low density rural areas innovation to sustainable cities solutions as a test bed for green and low-carbon economy as well as for tourism qualification and regional competitiveness.</p>	<p>4.a) Promotion and streamlining of innovation projects anchored in the territory 4.b) Promotion of social innovation initiatives 4.c) Development of innovative proposals for the qualification of tourism in the Centro Region</p>

Centro Smart Specialisation Strategy



A multi-level discussion group was established

Regional levels + National level

Centro RIS3 – Governance Model

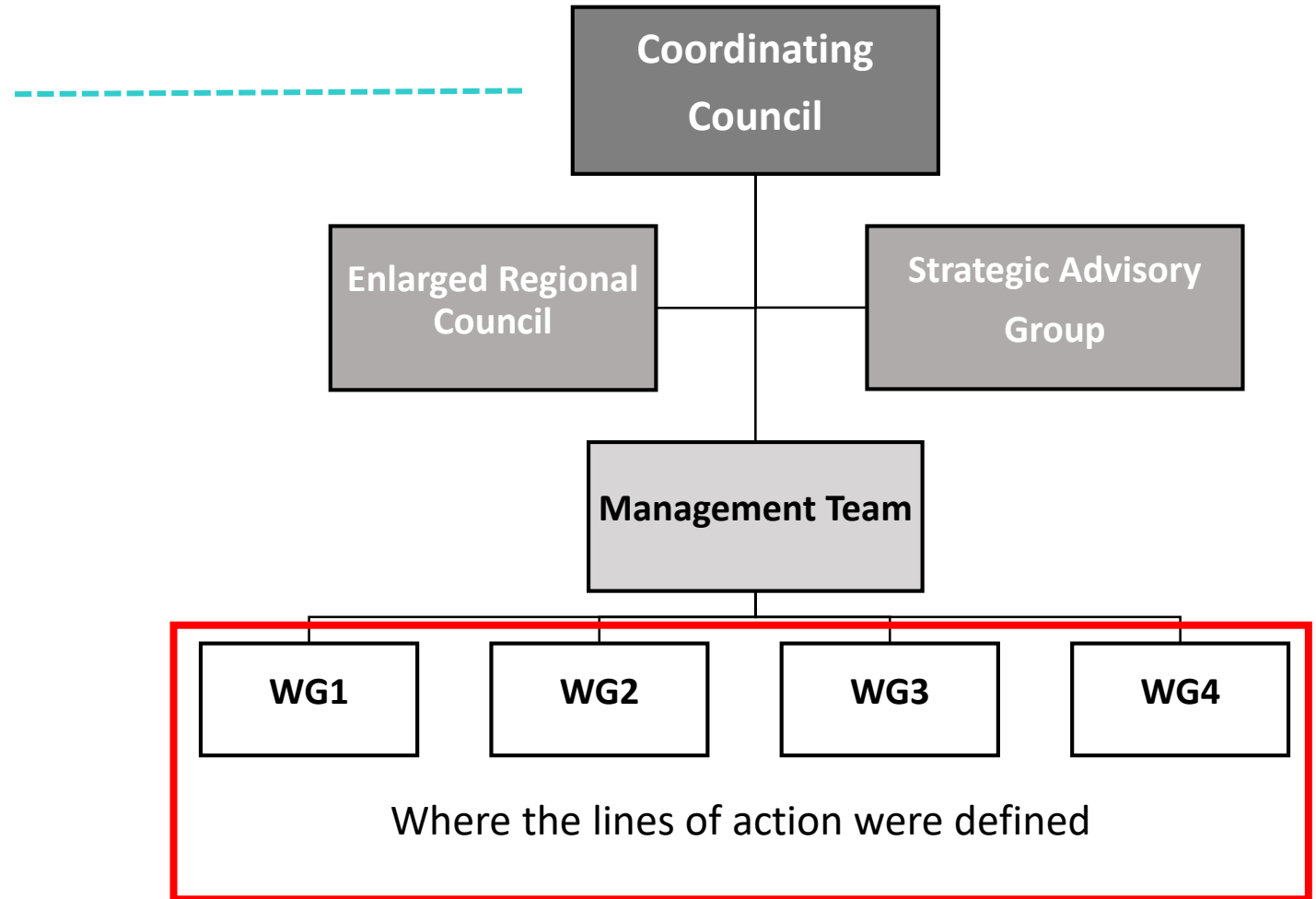
Representatives of regional relevant stakeholders:

- Universities
- Polytechnics
- Incubators
- Technological and Scientific Parks
- Companies
- ...



Representatives of relevant national stakeholders:

- National Operational Programmes
- National Agency of Innovation (responsible for the national RIS3)
- ...



	WG1	WG2	WG3	WG4	Other meetings
2015	19/01 48 participants 26/02 34 participants	13/01 52 participants 26/02 46 participants 16/04 31 participants	16/01 33 participants 27/02 35 participants	16/01 44 participants 27/02 81 participants (3 subgroups)	Kick-off meeting 07/01 77 participants Joint meeting 30/04 85 participants
2017	25/01/2017 41 participants	26/01/2017 38 participants	25/01/2017 25 participants	25/01/2017 35 participants	
2018	+WG3 (CE) 19/09/2018 21 participants	+WG4 (CE) 24/09/2018 30 participants	+WG1 (CE) 19/09/2018 21 participants	+WG2 (CE) 24/09/2018 30 participants	Joint meeting (CE) 10/12/2018 78 participants
2019					Kick-off meeting of the revision process 31/10 130 participants

- ❖ More than 1000 participations
- ❖ More than 100 entities represented



Entrepreneurial Discovery Process

Continuous process that allows:

- To choose investment priorities
- To refine priorities (lines of action)
- The creation of conditions for the emergence of new partnerships

1 → EDPs to discuss/ define priorities

2 → EDPs to discuss/ define **projects**

- Conversion of each thematic domain into more concrete and transformative actions
- Allow to focus on specific areas/ resources
- Only way to attract entrepreneurs

Vineyard and Wine

EDP

Organization: CCDRC and JRC

25 May 2017

→ 105 Participants

→ 13 Project Ideas

→ 6 project ideas moving forward to the PDL

PDL (Project Development Lab)

Organization: CCDRC and JRC

19 June 2018

→ 5 Working Groups (4 discussion themes)

→ Around 70 participants

Medicinal and Aromatic Plants

EDP

Organization: EUROACE

28 September 2017

→ 119 Participants

→ Support document for the sector

→ 1 project approved in POCTEP

Adoption of the method by regional and local stakeholders:

- Pinecone and pine nuts (association of municipalities)
- Blueberry (1 municipality and 1 university)

2 → EDPs to discuss/ define **projects**

Launch of thematic calls

- In specific domains
- Complete value chains
- Innovation + R&D + qualification + internationalisation
- Only ONE project TO BE approved: collaborative projects joining the relevant stakeholders of the value chain



Wine

Strategic project to support the wine value chain of the region

Participants:

- 5 wine associations of the region
- National Institute of Agricultural and Veterinarian Investigation
- 2 Polytechnics schools

+ 2,9 M€ of funding approved (ERDF)

Cheese

Programme for the valorisation of the cheese value chain of the region

Participants:

- Relevant associations and agri-food cluster
- Relevant public entities (for instance, municipalities)
- 2 Polytechnics schools and 2 technological centres

+ 1,9 M€ of funding approved (ERDF)

Agri-food

Network of competences for the innovation and sustainable development of the agri-food sector

Participants:

- 1 University and 1 Polytechnic school
- 1 Technological centre
- 1 Interface centre

+ 1,9 M€ of funding approved (ERDF)

Forest

Awaiting results

1. Continuous monitoring process:

- it is not only about formal reports with a set of complex indicators
- it is also about give back information in an easy and informal way

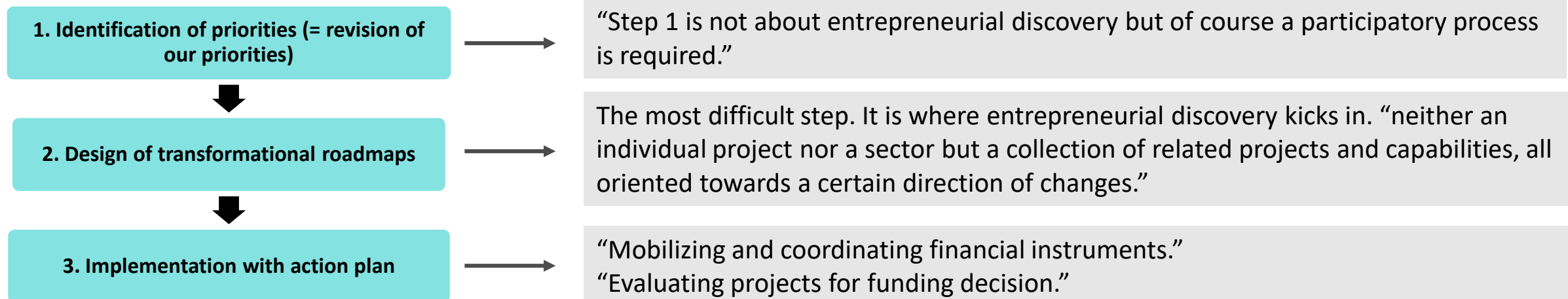
2. Further develop our R&D Internationalisation Plan

- **Main goal:** Increase regional actors' participation in European programs, networks and platforms, in articulation with Centro RIS3 implementation.

↓ ESIF dependence

↑ H2020 competitiveness

3. Review our RIS3 following the Dominique Foray's 3 steps method





RIS C³NTRO

INNOVATION FOR A BETTER **FUTURE**

- <http://ris3.ccdrc.pt/>