

biolab.ponent

# Ponent: geographical scope and main data

Area	5578 km <sup>2</sup>
Rural population	224,683 inhabitants
Density	41 inhab./km <sup>2</sup>
Municipalities	149 km <sup>2</sup>
Fields	3,261 km <sup>2</sup>
Urbanized	228 km <sup>2</sup>
Forest area	2,089 km <sup>2</sup>



corn	543,469 t
Barley	488,227 t
Fodder	320,435 t
Fruit trees	1,982,299 t
Vines	721,783 t
Olive groves	38,041 t
Ovine livestock	47,261 heads
Bovine livestock	338,779 heads
Pork livestock	4,362,276 heads

Source: Statistical Institute of Catalonia, 2018

# Ponent: socioeconomic problems

- Agro-food system: **fragmented structures**, large number of small-scale **family producers**, **diversified** farming activities.
- **Low income**, **aging** and the **pressures** to which the sector is subjected are causing the **abandonment** of many farms.
- **Young generations** do not find attractive jobs and leave the rural territory.
- **Large speculative companies** take over land and farms for investment and resources exploitation.
- Projects to address these challenges (>100 projects & >51M€ in 2014-2020) are **fragmented**, **isolated** and **misaligned**.



The new productive model promoted globally is seen as a great opportunity (**perhaps the only one**) to build effective solutions.

The alternative to this change is a depopulated territory, used by big companies as a source of resources and as a recreative area for urban inhabitants.

# The challenge in the territory

To transform current production and consumption models towards the **green and circular** economy model based on **local resources** to capture social, economic and environmental value for sustainable, inclusive and prosper development of rural communities



Complex challenge that requires a systemic approach



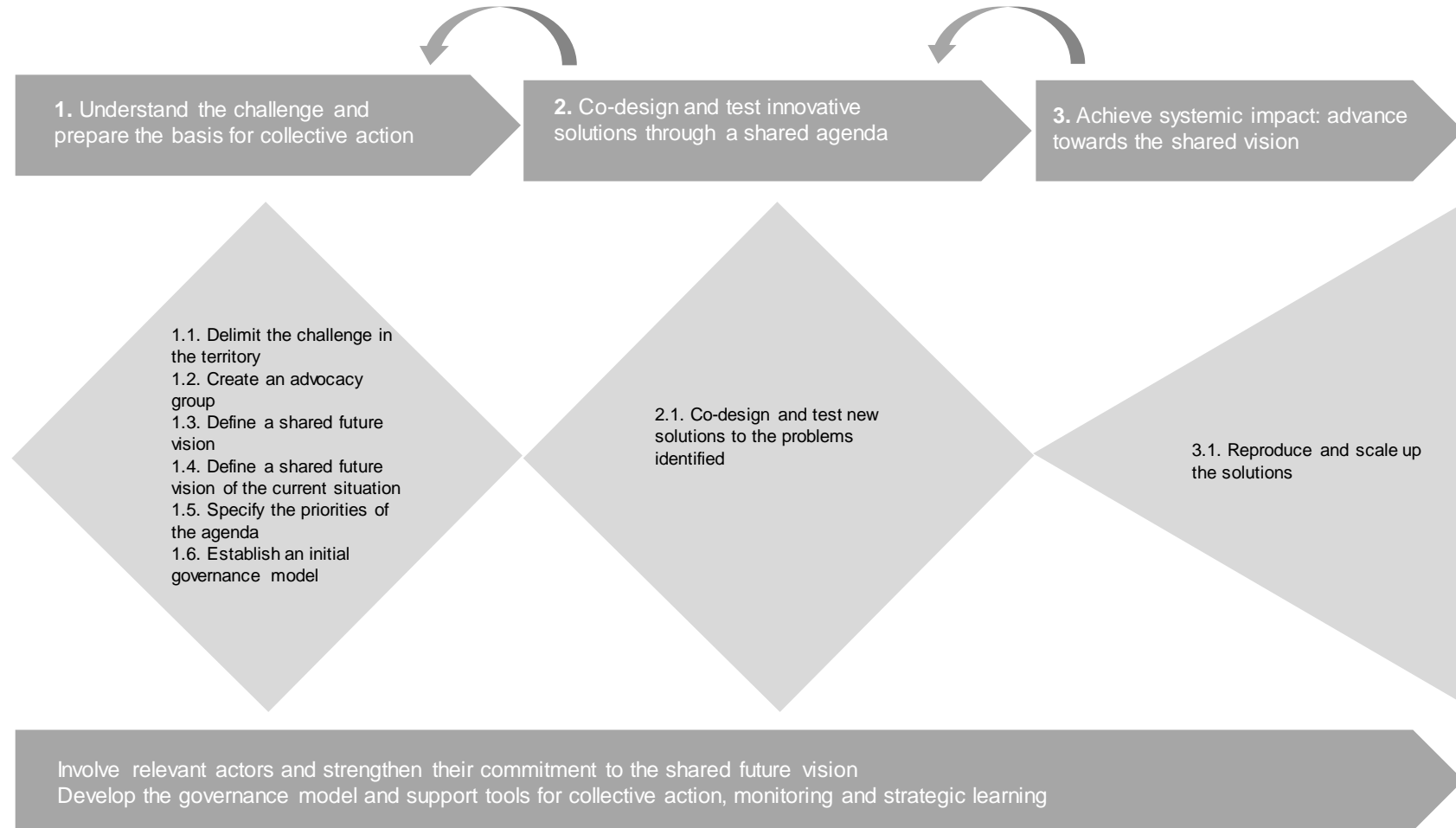


# The TOOL

SHARED AGENDAS FOR  
SUSTAINABILITY AND SOCIAL CHANGE

biolab.ponent

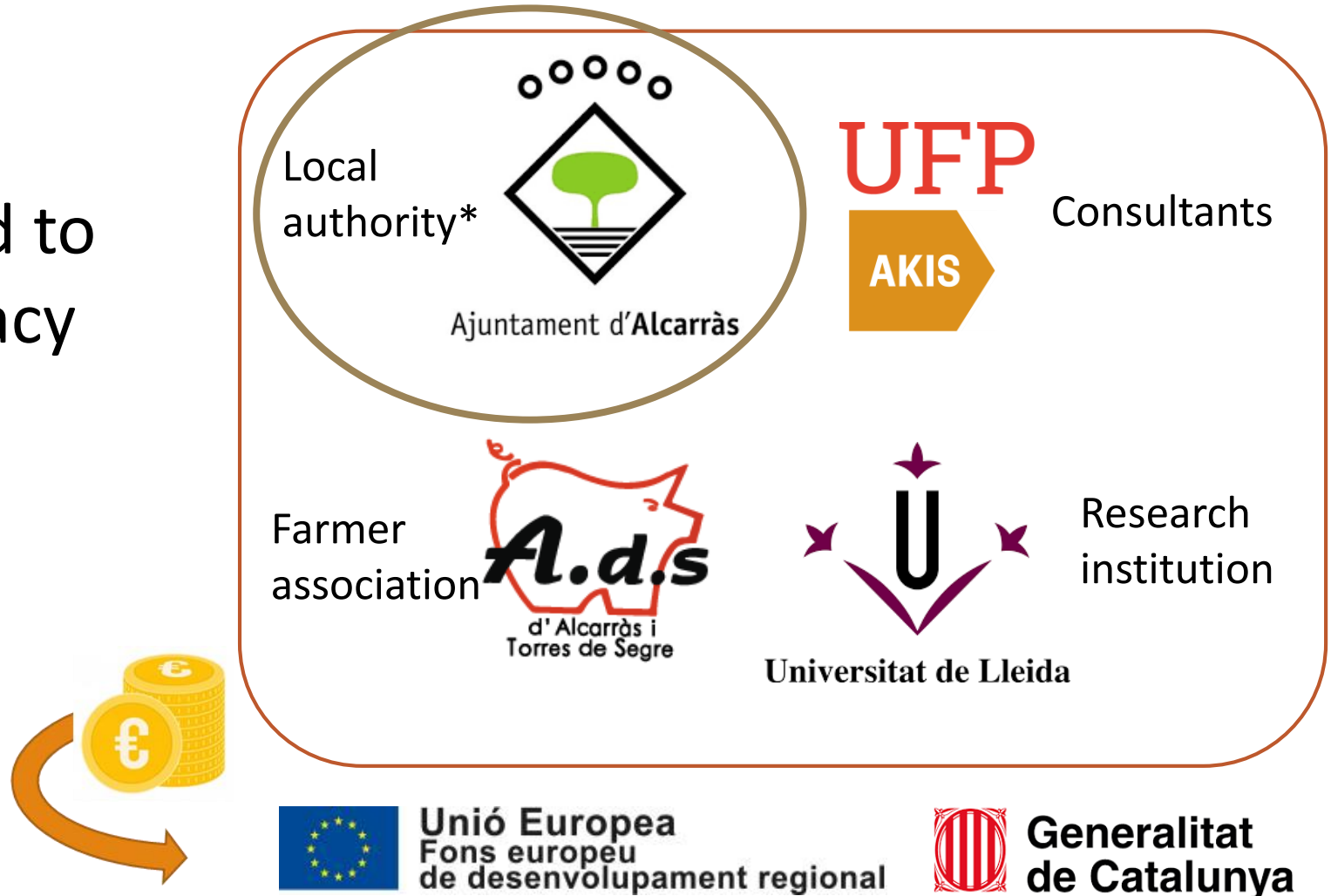
FROM LOCAL NEEDS  
TO GLOBAL OPPORTUNITIES



# 1. Understand the challenge and prepare the basis for the collective action:

## 1.1. Key actors committed to change and initial advocacy group (2017)

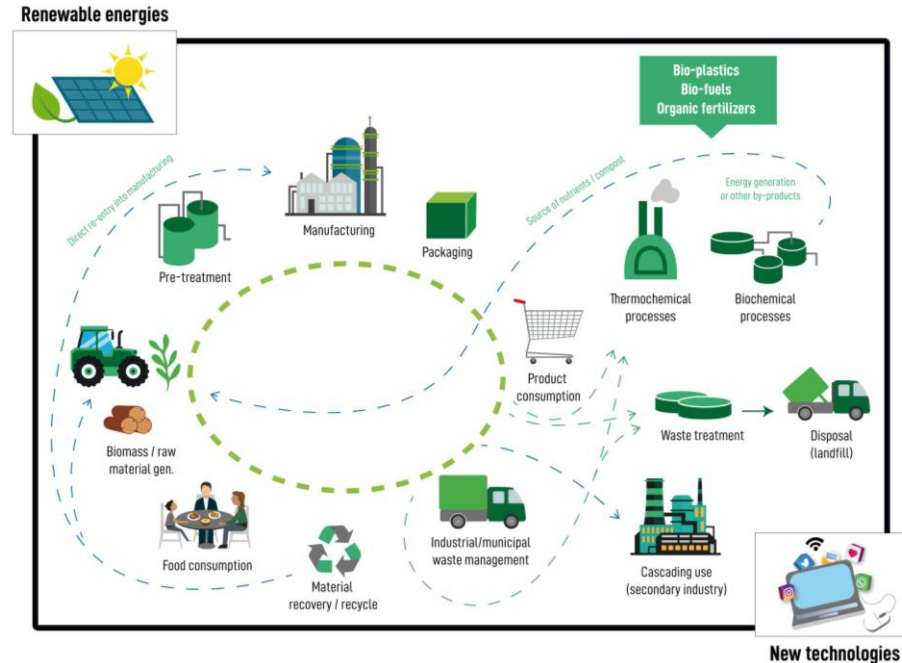
\*Alcarràs is one of the largest municipalities in the area, regardless of the capital Lleida, with about 10,000 inhabitants.



# 1. Understand the challenge and prepare the basis for the collective action:



## 1.2. Co-developing a shared future vision (2018)

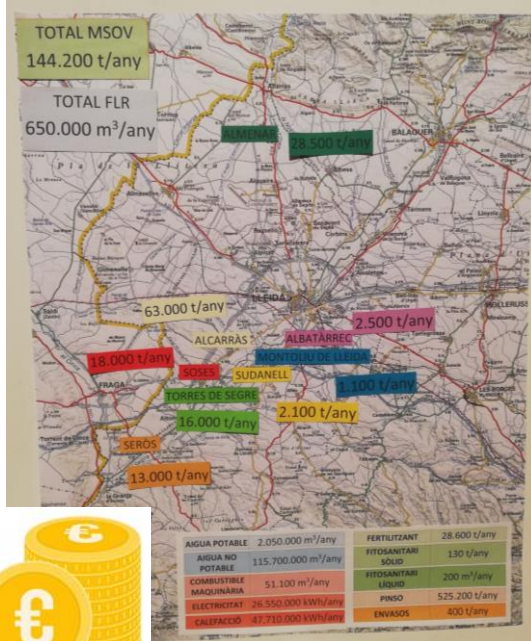


Based on a model of green and circular economy, respectful of the environment, the territory optimizes the use of endogenous resources to produce food, energy, goods and services within the framework of a model of sustainable, inclusive and welfare development.

**33 participants:** 10 local authorities, 5 researchers, 12 SME, 6 farmers associations

# 1. Understand the challenge and prepare the basis for the collective action:

## 1.3 and 1.4. Co-developing a shared vision of the current situation, the problems and their causes (2019)



**60 participants:** 14 local authorities, 10 researchers, 24 SME, 6 farmers associations, 1 financial entity, 5 regional authorities.

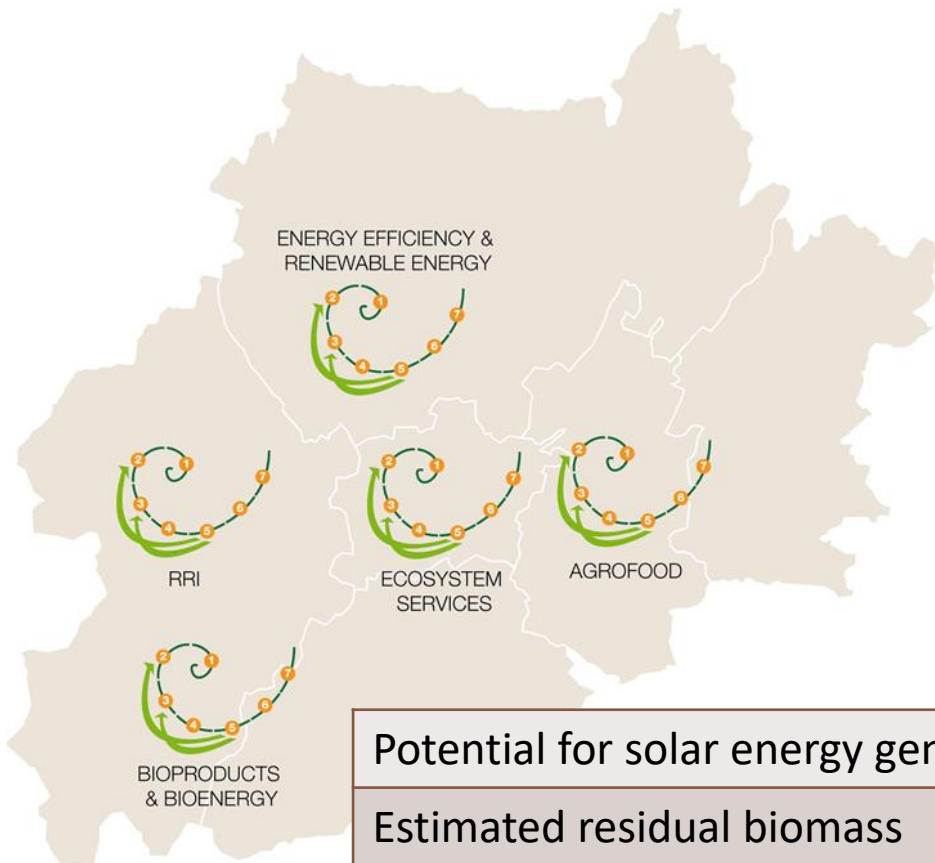


LOCAL&REGIONAL  
ADMINISTRATIONS



# 1. Understand the challenge and prepare the basis for the collective action:

## 1.5. Identifying the opportunities on which action is possible



- Governance model
- Open data platform for local resources
- Physical and virtual spaces for collective action
- Pilot and experimental facilities



Unió Europea  
Fons europeu  
de desenvolupament regional

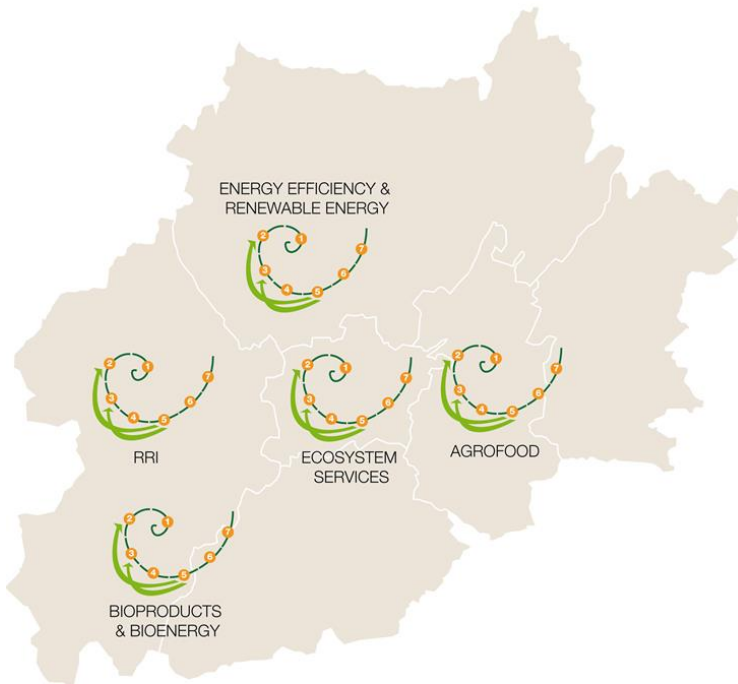


Generalitat  
de Catalunya



Diputació de Lleida

## 2. Co-designed innovative solutions



- Training of local innovation agents



- Pilot plant for the treatment of lignocellulosic biomass

**RIS3CAT**



- Design of a territorial biorefining system (logistic aspects)



- Communication strategy for awareness



- Creation of the worktable for energy transition



Teresa Botargues  
[tbotargues@diputaciolleida.cat](mailto:tbotargues@diputaciolleida.cat)

biolab.ponent