

# International growth from clusters

**ARCTIC  
Smartness**



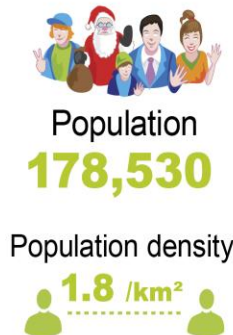
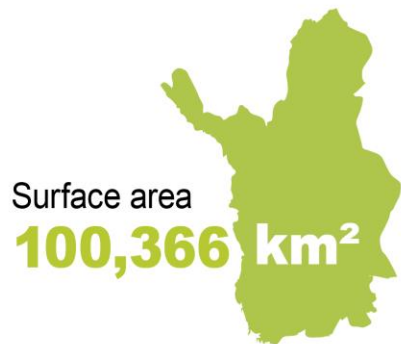
Arctic Frontier – side event  
Smart Specialisation in the Arctic – experiences and next step

Case Lapland, Finland  
The Story - Power of the Regional Innovation Ecosystem,  
Arctic Smartness – Focus on Smart Choices

Kristiina Jokelainen  
Regional Council of Lapland



# LAPLAND in facts & figures



Employment  
**69,000 jobs**  
50% in private enterprises  
**9,100 private enterprises**



Annual revenue  
**€ 13,300 M**  
70% from private enterprises  
**Fastest growing economy in Finland**



Mining & metal industry  
**€ 5,000 M**  
Annual revenue



Forest bioeconomy  
**€ 1,300 M**  
Annual revenue



Tourism  
overall demand  
**€ 1,000 M**

**Fastest growing industry in Lapland**

Annual growth 9%  
20% in 2017



Agricultural production  
& reindeer husbandry  
**€ 340 M**  
Annual revenue



**4<sup>th</sup>** largest export  
region in Finland  
**7%** of Finnish  
export

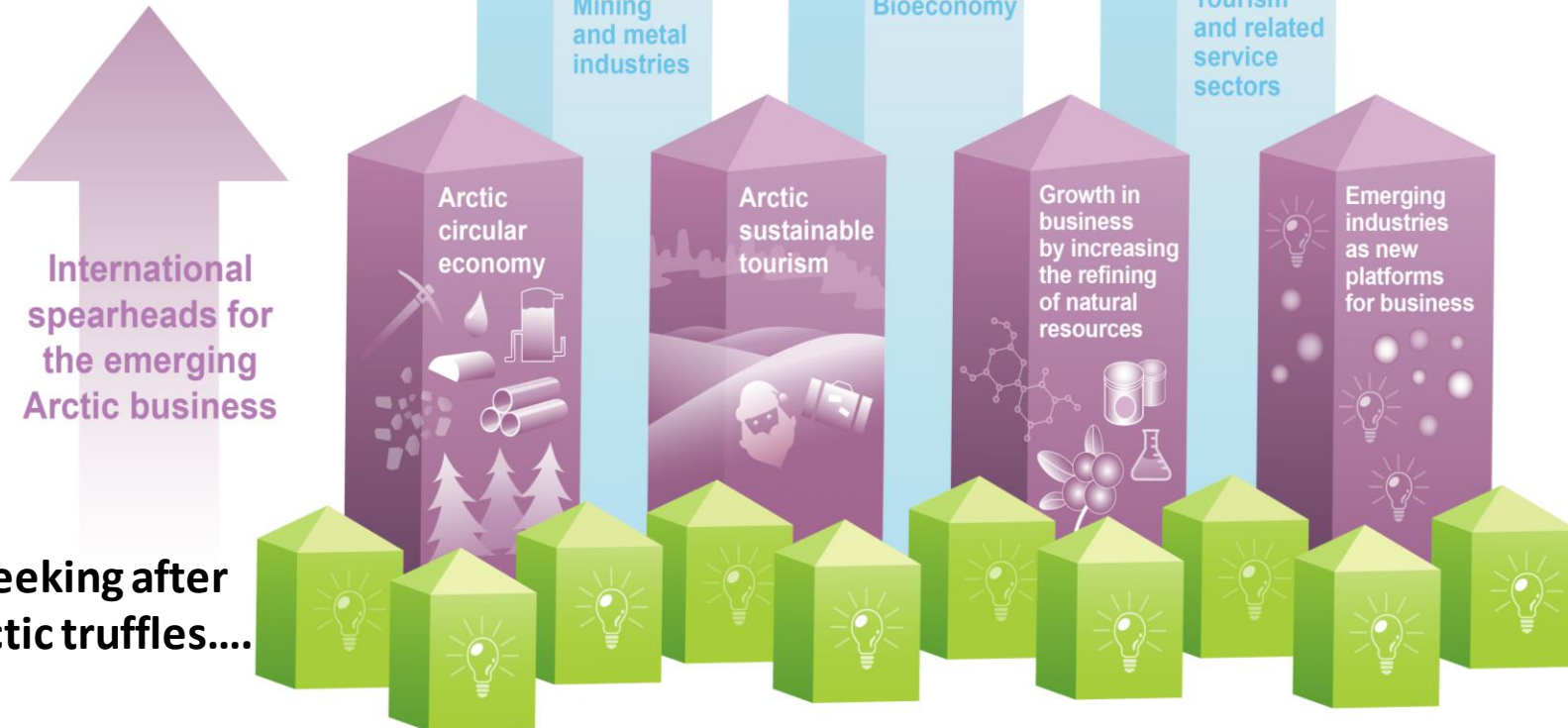
- + World's northernmost bio, mining and metal industry hub
- + Only chromium mine and the largest gold mine in Europe
- + 9 national parks in the area
- + World's cleanest air and Europe's purest water

- + World's largest wild organic harvesting area
- + Strong educational structure:  
University of Lapland, Lapland University of Applied Sciences, Vocational College Lappia, Lapland Education Centre REDU and Sami Education Institute
- + Research institutes:  
Geological Survey of Finland (GTK), Natural Resources Institute Finland (LUKE), Sodankylä Geophysical Observatory (SGO) as the most notable
- + National circular and bio-economy centre in Kemi

# Arctic industries at the centre

Three economic backbones of Lapland  
underlying the emerging Arctic business

...more specific  
industrial focus....



The new industries will emerge with the support of four strategic business spearheads

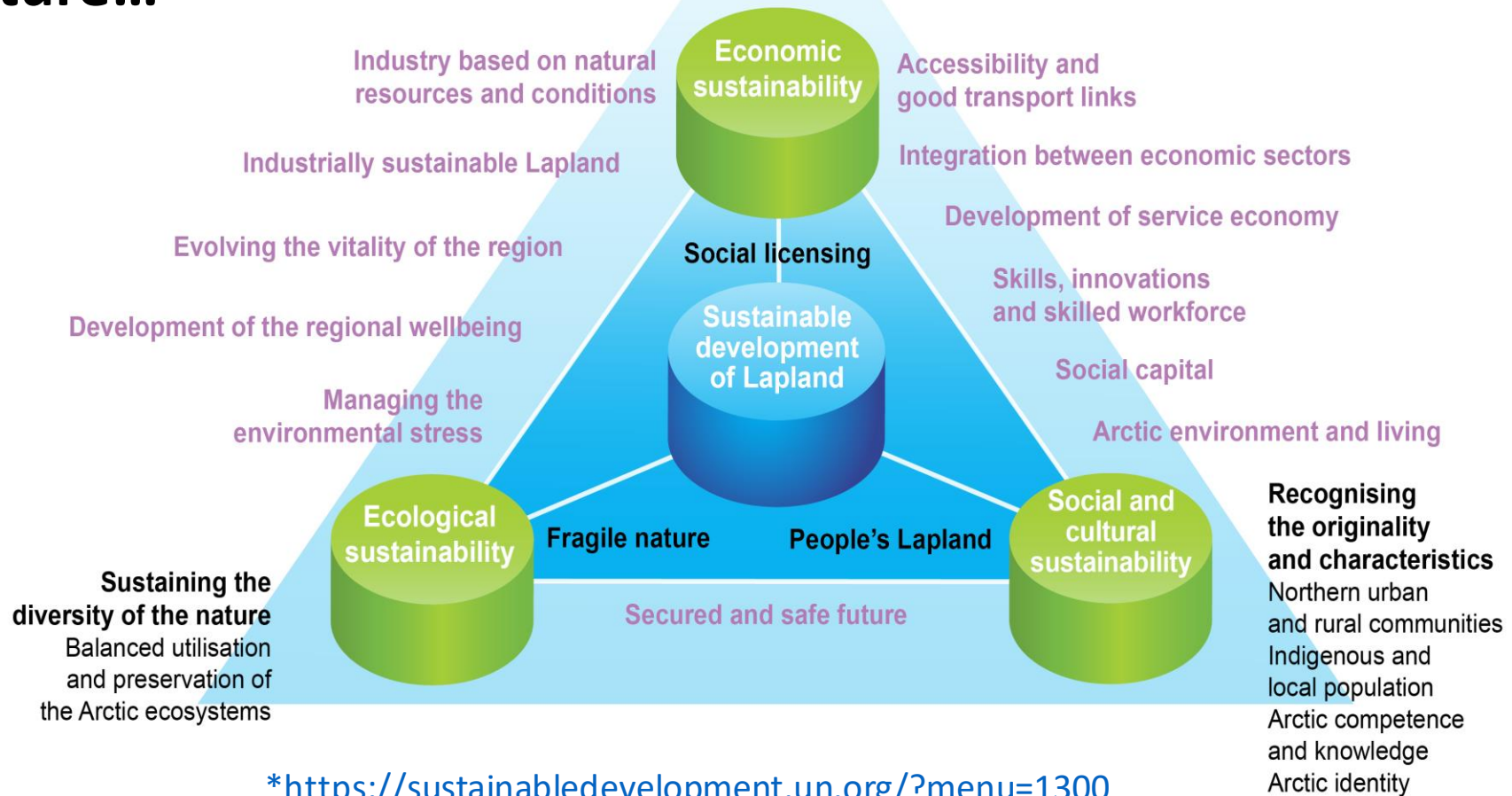


# ...sustainable Lapland – foundation for the future...

**Economic sustainability**  
Based on Arctic natural  
resources and conditions  
Regional economic benefits  
Balanced growth  
Sustainable value chains

**\*SDGs 17 Sustainable  
Development Goals**

**\*\*Green Deal Investment Plan**



[\\*https://sustainabledevelopment.un.org/?menu=1300](https://sustainabledevelopment.un.org/?menu=1300)

[\\*\\*https://ec.europa.eu/commission/presscorner/detail/en/qanda\\_20\\_24](https://ec.europa.eu/commission/presscorner/detail/en/qanda_20_24)

# Overview of Lapland S3 – International Smart Specialisation

ARCTIC  
Smartness

## Governance

- S3 planning and design process is led by the regional Council of Lapland – overall responsibility to lead regional development
- S3 Implementation in two levels:
  - Arctic Smartness concept supporting the spearheads activities
  - Recognising of emerging sectors and potential – systematic development
- How is the governance set-up of your RIS3?
  - Regional ecosystem – led jointly Regional Council of Lapland and Lapland ELY Centre\*
  - Governance involves stakeholders and have both Top-Down to Bottom-Up continues dialog
  - Regional planning/programming provide the

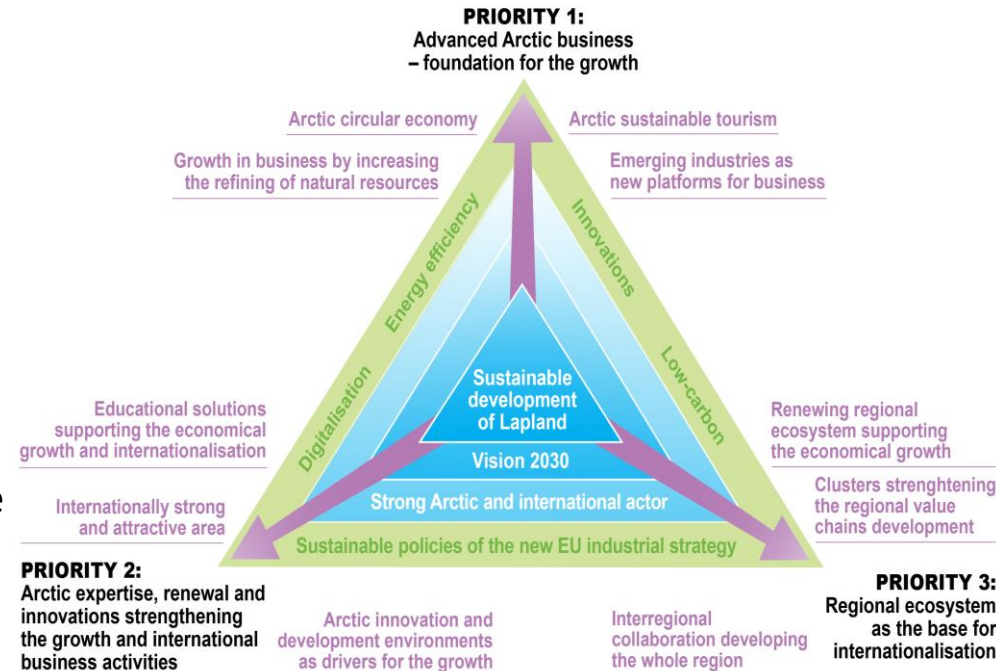
\*Centre for Economic Development, Transport and the Environment (ELY Centres) is responsible for the regional implementation and development tasks of the central government.

breeding ground for smart specialisation

– Regional ESIF used in synergy – policy mix

## Lapland Smart Specialisation Priorities

- Agreed together with regional stakeholders
- Shared responsibilities

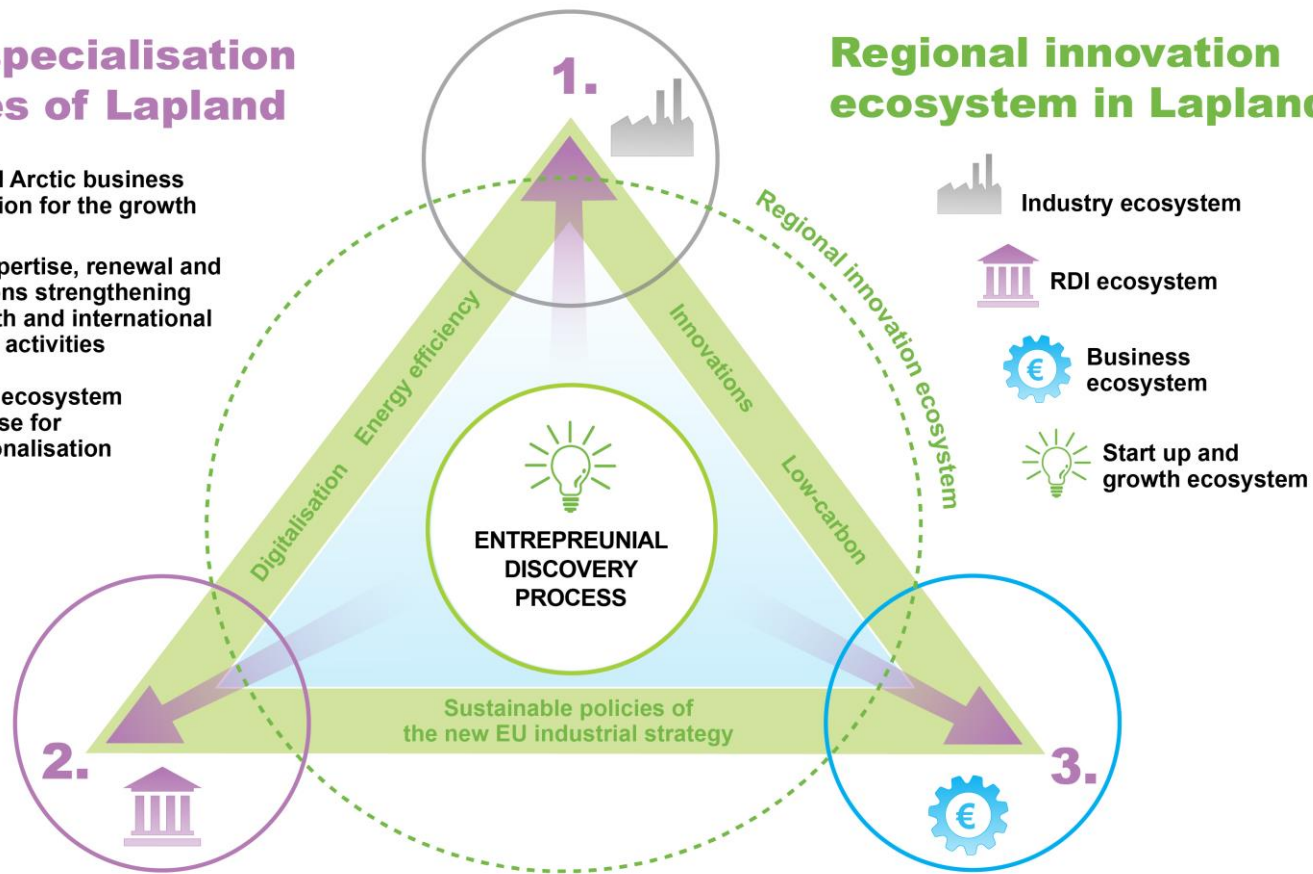


# Good governance forms the strong regional ecosystem - Orchestrating the Regional Ecosystem

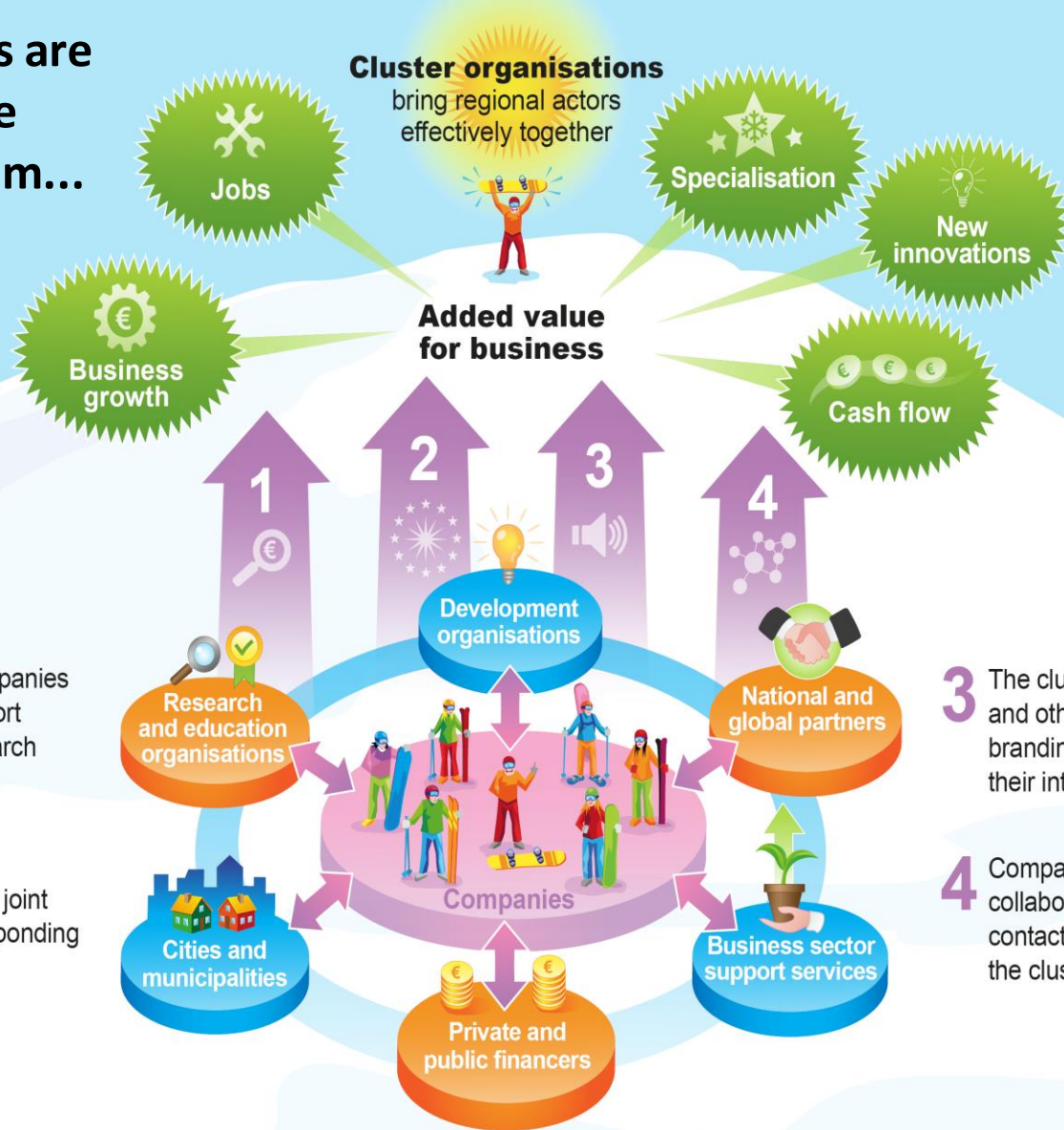
## Smart specialisation priorities of Lapland

1. Advanced Arctic business – foundation for the growth
2. Arctic expertise, renewal and innovations strengthening the growth and international business activities
3. Regional ecosystem as the base for internationalisation

## Regional innovation ecosystem in Lapland



...modern clusters are the engines of the regional ecosystem...



**1** The cluster supports companies in utilising business support services, promoting research and acquiring financing.

**2** The cluster can provide assistance in applying for joint EU project funding or responding to large calls for tender.

**3** The cluster can help companies and other local actors with e.g. branding, marketing and promoting their interests.

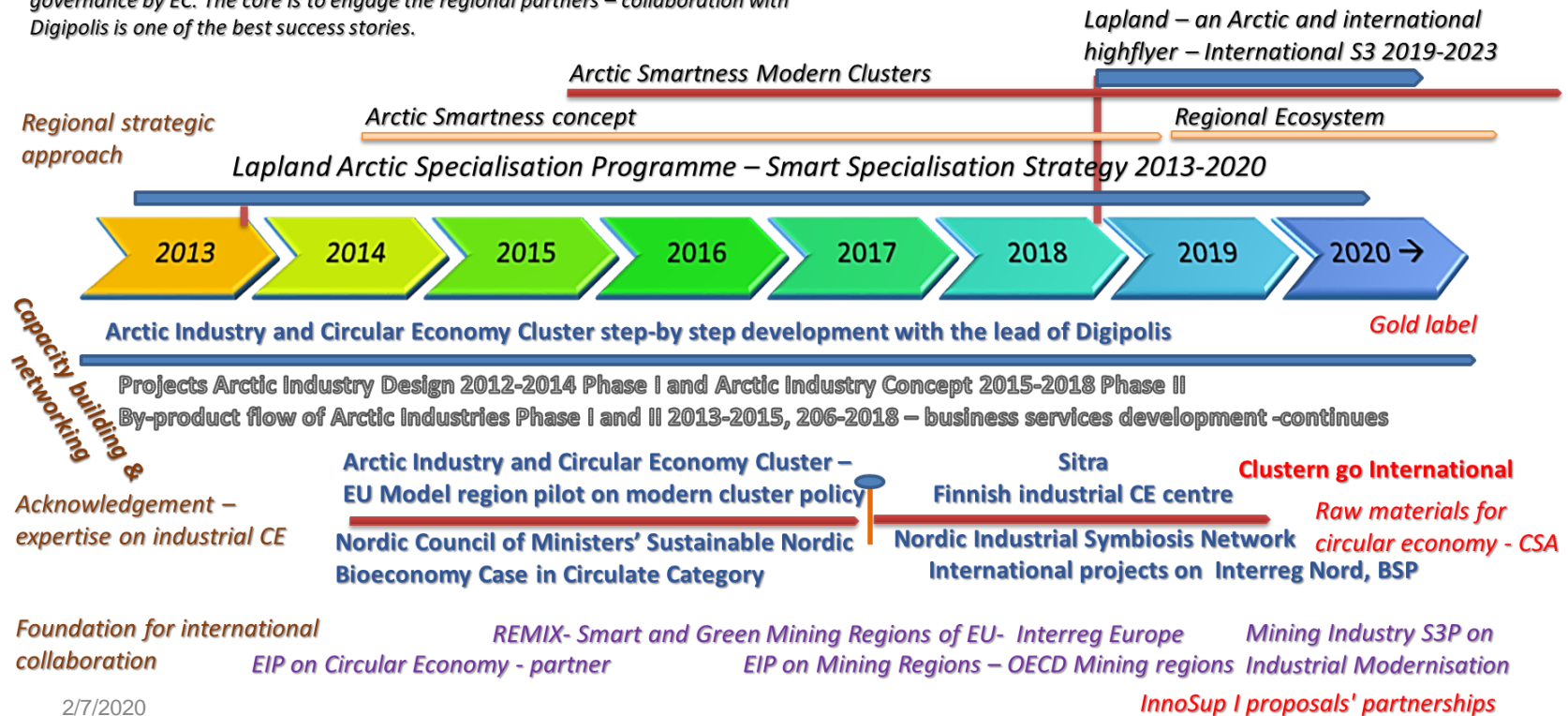
**4** Companies can find new collaboration models, international contacts and markets through the cluster.



# Case –Arctic Industry and circular economy cluster

## Good governance forms the strong regional ecosystem Systematic development approach

Reginal Council of Lapland and Arctic Smartness was selected as best practise on good governance by EC. The core is to engage the regional partners – collaboration with Digipolis is one of the best success stories.





# ARCTIC Smartness

Thank you

<https://arcticsmartness.eu/>

Leverage from  
the EU  
2014–2020

ARCTIC  
DEVELOPMENT  
ENVIRONMENTS

CLUSTER

ARCTIC  
DESIGN

CLUSTER

ARCTIC  
INDUSTRY  
AND CIRCULAR  
ECONOMY

CLUSTER

ARCTIC  
SMART RURAL  
COMMUNITY

CLUSTER

ARCTIC  
SAFETY

CLUSTER