

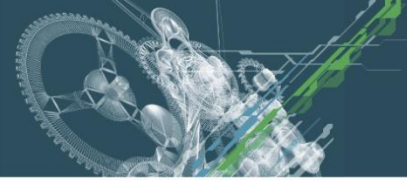
ENCAM AND THE SLOVENIAN TOOL AND DIE DEVELOPMENT CENTRE

June 2020



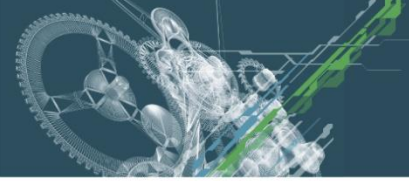


Who we are - what we do?

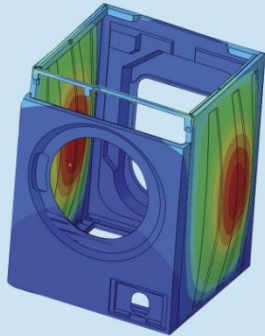


We help our clients **design optimised products** and **troubleshoot problems in production!**



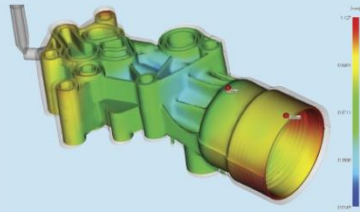


ENGINEERING SERVICES



Your key to optimised products and stable production processes

APPLIED RESEARCH



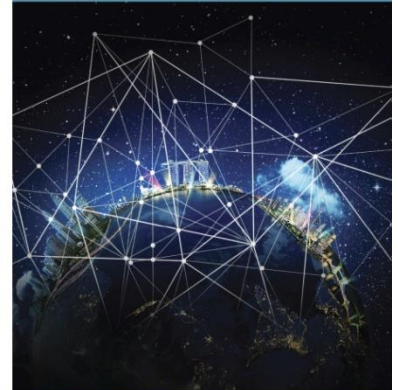
A strong partner in small or large scale R&D projects

SPECIALIZED TRAINING

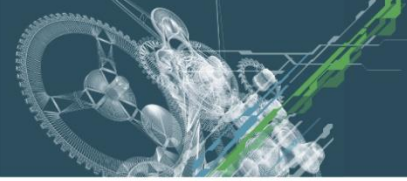


We place knowledge in our customers' environment

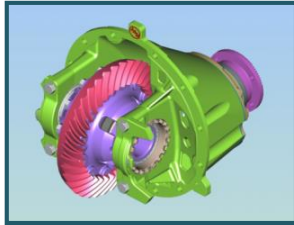
INDUSTRIAL ASSOCIATION



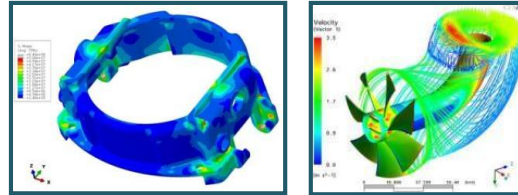
Link to Slovenian toolmaking at home and abroad



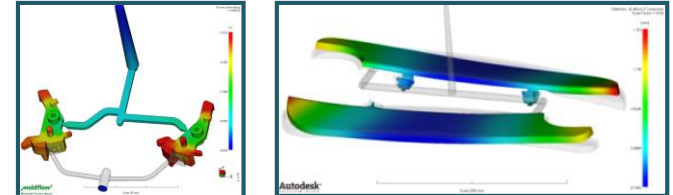
Turnkey Product Design



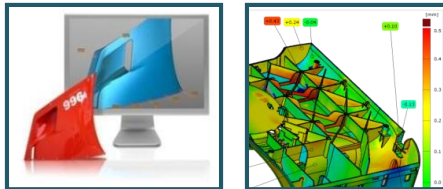
Advanced Structural FEM analyses



Injection Moulding Simulations

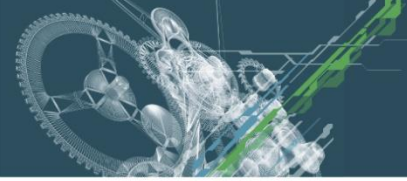


3D scanning & Inspection

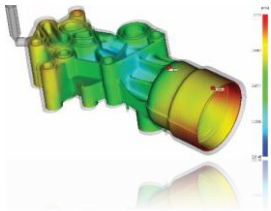


Rapid Tooling and Prototyping





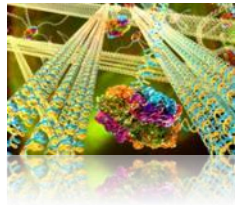
- lines of research:



Material Processing
Technologies



Advanced
Multiphysics
FEM analyses



Materials



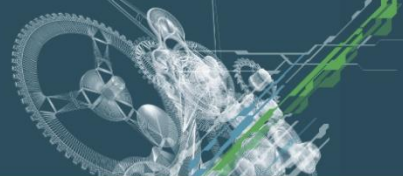
Mechatronics &
Industrial Sensorics

Life-Cycle Assessment



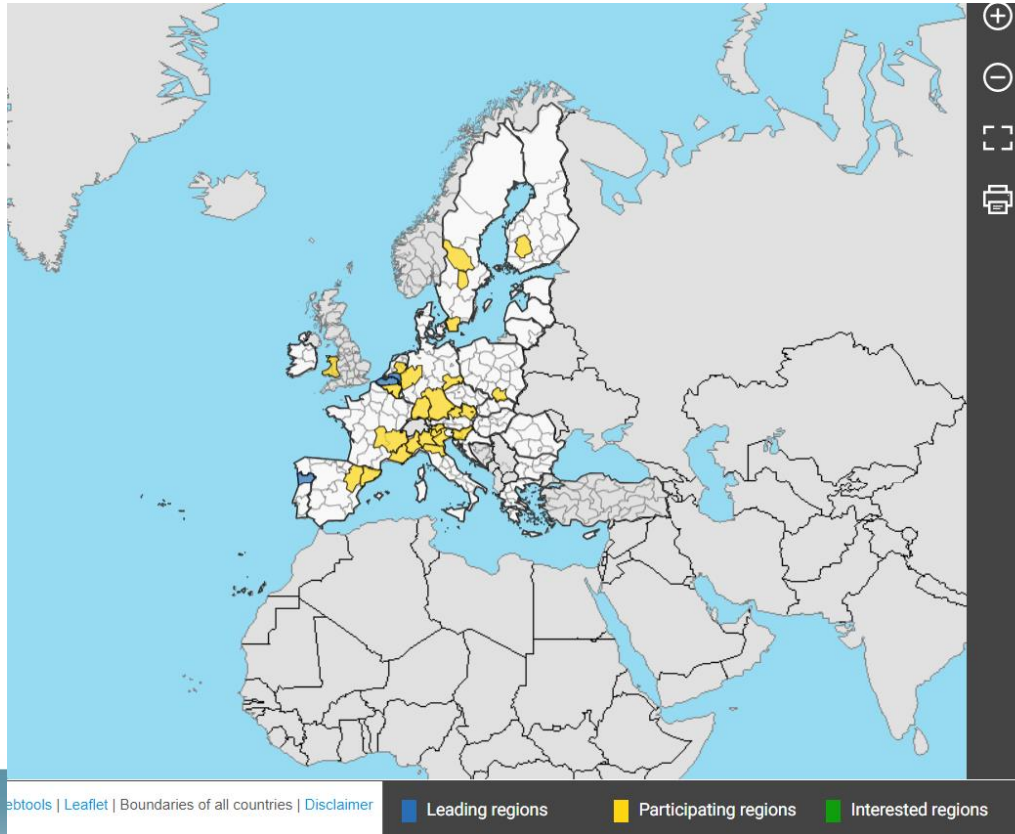
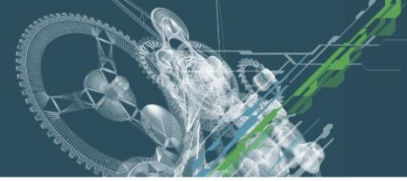
- project preparation and management
- experts in national and EU public funding
- wide international partner network





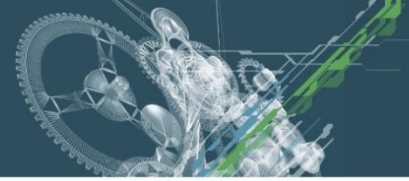
- *Established in 1994*
- *22 employees*
- *1,8+ MIO € yearly budget*
- *Located close to main markets*
- *(German speaking)*







European Network of Centres for Advanced Manufacturing - ENCAM



- **validate solutions/products/services/prototypes,**
- **Shorten time-to-market period,**
- **Minimize the risk of valley of death occurrence,**
- **Advance existing business models,**

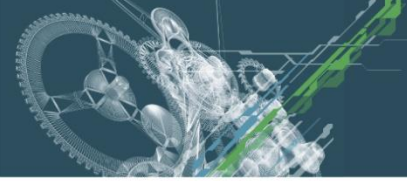
Technology focus:

- **AMTs - Additive Manufacturing Technologies;**
- **IA - Big Data Analytics, Machine Learning and Artificial Intelligence;**
- **DS - Data Simulation and Optimization;**
- **IoT – Internet of Things;**
- **AMS – Advanced Manufacturing Solutions (autonomous and collaborative robots);**
- **AR - Augmented Reality.**





European Network of Centres for Advanced Manufacturing - ENCAM



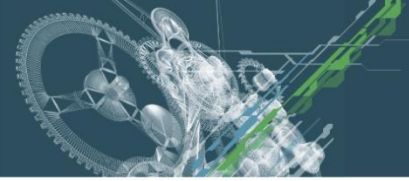
- **one stop-shop,**
- **support the broader and faster take-up of the new disruptive technologies by a critical mass of SMEs**

The laboratory network will tackle the full spectrum of processes and will provide the following services /solutions:

- **demonstration facilities and service centres for SMEs,**
- **Fast prototyping and solution testing equipment,**
- **Infrastructure for testing of the latest technologies and assessing best implementation,**
- **support in accessing new markets and large OEMs,**
- **direct access to research facilities.**
- **Training and certification services**
- **Other advisory services.**

ESTABLISHING PARTNERS: TECOS, COMET





STATE OF THE ART OF ENCAM:

- Support from TAF received
- Development of investment protocol, definition of business models and services
- New partners included: Area Science park-Padriciano
- Investment sizes assessed: cca 30 mio EUR

CHALLENGES:

- COVID-19
- Different institutions with different operating systems and financial models
- Definition of services
- Investment specification





www.tecos.si

Simona.Vernon@tecos.si

