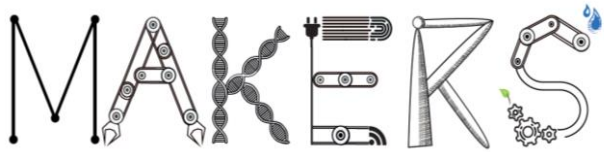


# Transformative place-based industrial policy

**Lisa De Propris**

**Professor of Regional Economic Development -Birmingham Business School**



# Fourth Industrial Revolution technologies

ICT & mobile tech,  
3D, AI, Robotics,  
sensing & space  
tech, drones

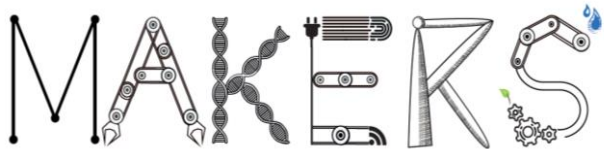
**BUT ALSO**

Biotech, nanotech,  
neurotech, green &  
renewables

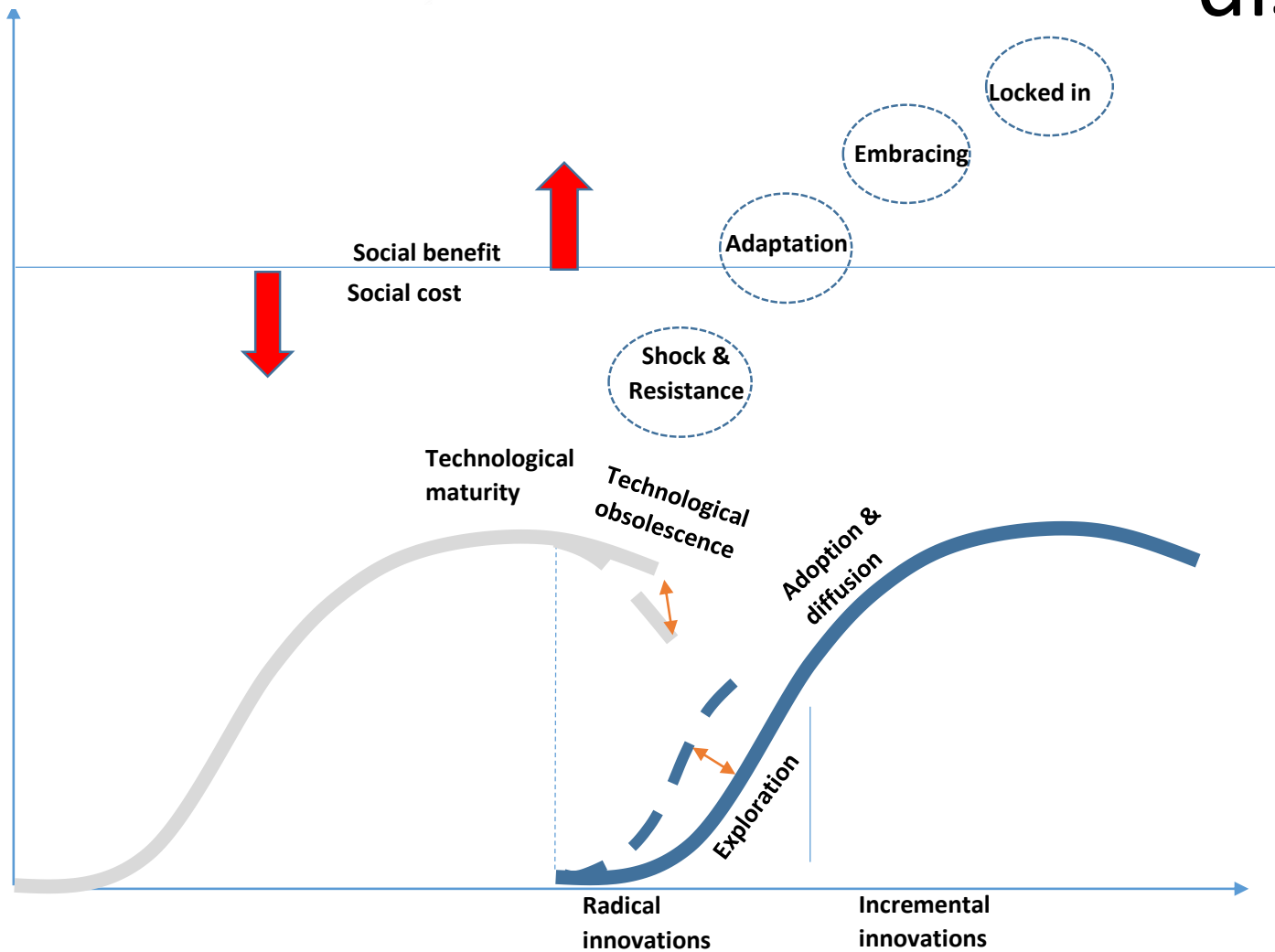
Efficiency and cost driven →

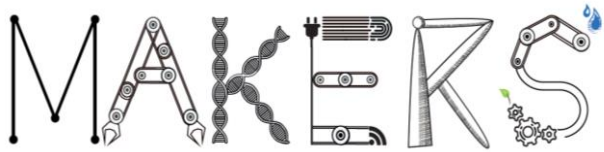
- Smart and connected factories
- Mass customisation
- Change the use and flow of inputs in factory and across value chain

Reconcile growth  
with long term  
sustainable  
development

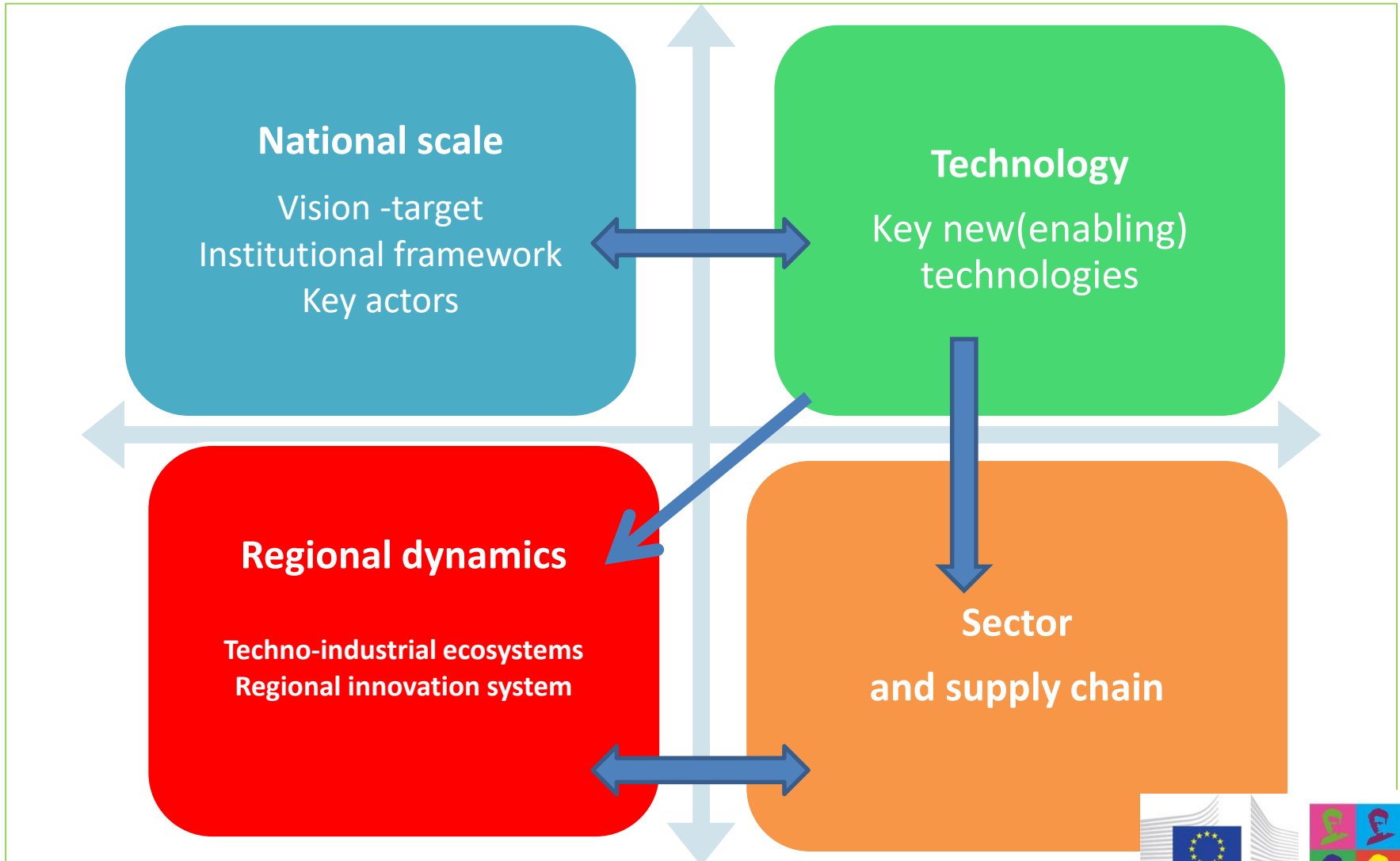


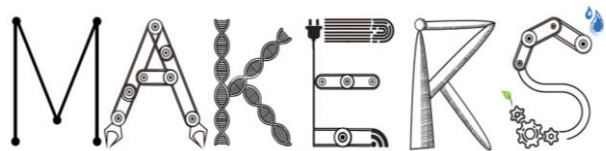
# Socio-economic disruption





# Transformative Innovation Matrix





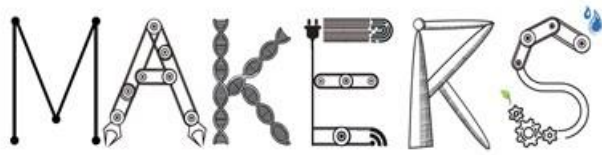
# Place-based transformative industrial policy

→ Transformative diversification

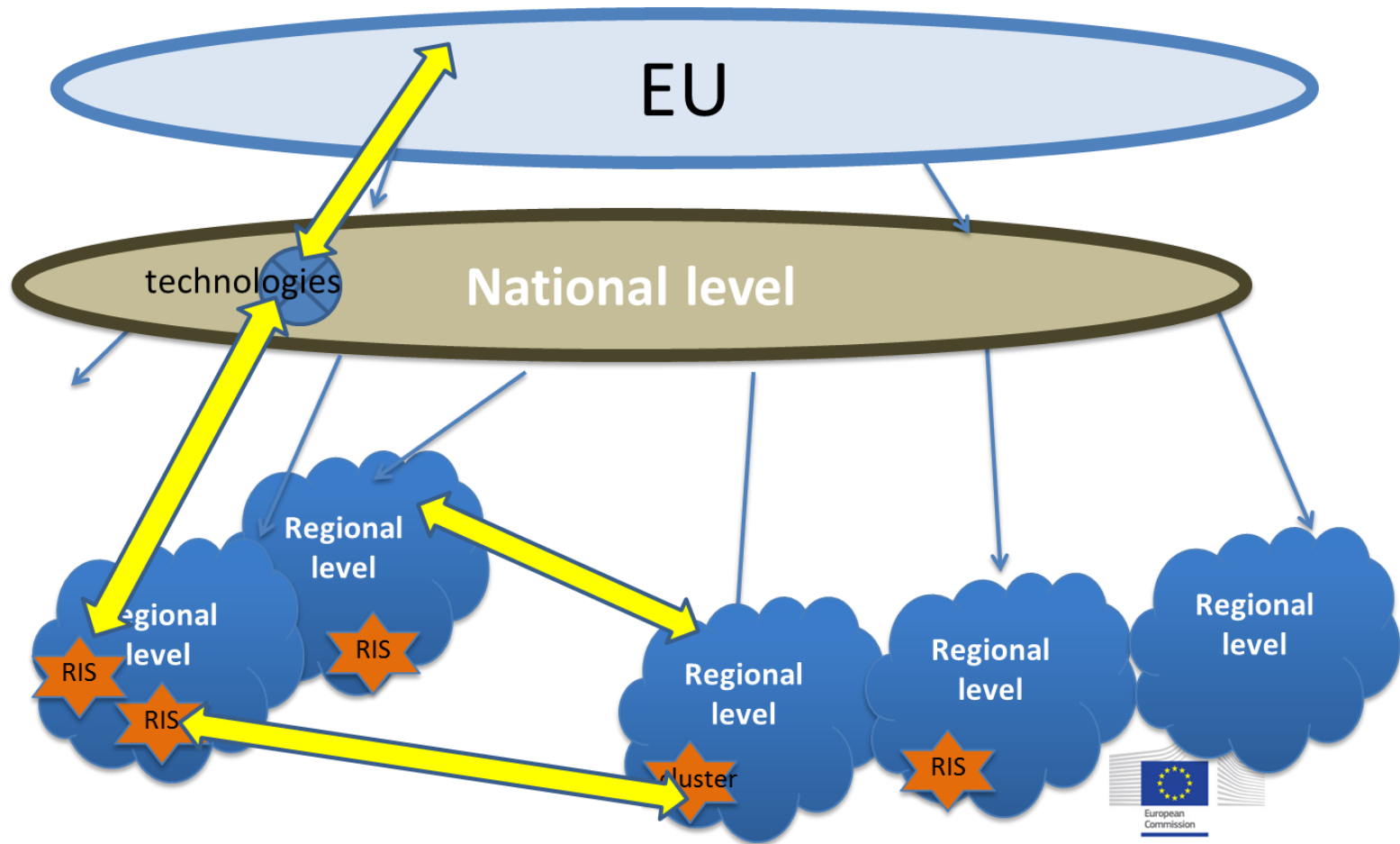
Techno-industrial  
ecosystems

Embedded  
regional  
specialisations

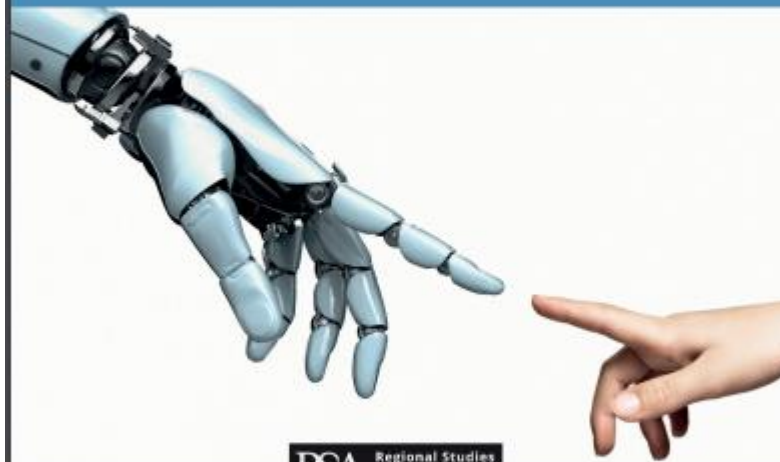
Fourth Industrial  
Revolution  
technologies



# Multi-level strategy



# INDUSTRY 4.0 AND REGIONAL TRANSFORMATIONS



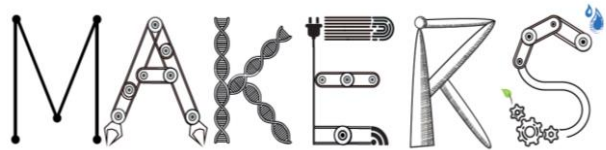
**RSA** Regional Studies  
Association

*A leading & impactful community*

REGIONS AND CITIES

EDITED BY LISA DE PROPRIIS  
AND DAVID BAILEY





Thank you!!

[l.depropris@bham.ac.uk](mailto:l.depropris@bham.ac.uk)

Visit: [www.makers-rise.org](http://www.makers-rise.org)