

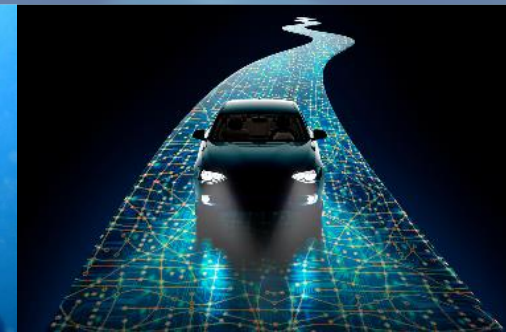


MINISTRY FOR DEVELOPMENT
AND INVESTMENTS



National Strategy for Research, Technological Development and Innovation (NSRI) 2021-27

Dr. Agnes SPILIOTI
S&T Policy Planning Directorate



National Strategy for Research, Technological Development and Innovation

Vision

A new growth model socially, economically and environmentally sustainable, based on knowledge and its commercialization for the production of high added value products and services, capable to integrate into global value chains.

Investments in research and innovation are in line with the country's growth strategy, providing the necessary innovative background aiming at increasing the competitiveness of the Greek economy and tackling important social problems.

National Research and Innovation Strategy for Smart Specialization / RIS3 2014-20: 8 priority sectors

Agro-food

Environment/Sustainable Development

Energy

Health/ Pharmaceuticals

ICT

Materials/ Construction

Transport/ Logistics

Culture/ Tourism/ Creative Industry

In line to the
National
priorities for
Growth



RIS3: A place-based strategy that focuses efforts on specific Sector and Activities resulting from the analysis of the characteristics of the economy with a view to transforming the sectors

It uses the **Entrepreneurial Discovery Process** (EDP) to identify business opportunities through the incorporation of research results in global value chains.

EDP: Business – driven Open Consultation process involving business, academia, public authorities at national and regional level, funding bodies, civil society etc.

New Perspectives for 2021-27

- ▶ Towards Integrated, multidisciplinary approaches
- ▶ 4th Production Revolution Technologies (Artificial Intelligence, Advanced ICT, Advanced Robotics, Advanced Materials & Sensors, Biotechnology, Bioinformatics, Nanotechnology, Sustainable Chemistry etc.)
- ▶ Industrial Transition & Decarbonization
- ▶ Skills
- ▶ Grand Societal Challenges (Health, Climate Change, Food Resilience)
- ▶ Support to other National & European Strategies (Green Deal, Circular Economy, Blue Growth, Bio-economy etc.)
- ▶ Multi-purpose technologies & Security issues

NSRI 2020-27: Main Policy Pillars

Pillar 1: Investment in Innovation

Linking business to academia

Innovative Entrepreneurship

Pillar 2: Research Excellence and Capacity

Human Potential

Research Infrastructures

Pillar 3: Societal Challenges, Science and Society, Policy Support

Societal Challenges

Science and Society/
Policy Support

Horizontal Dimension: “Internationalization – Integration into Global Value Chains”

Pillar 1: Investment in innovation

1.1: Collaboration between Business & Academia

2014-20 “Research, Create, Innovate” 862 participations from Universities in 502 projects
With 185 m € public funding/ Total 1057 projects >820 m € public funding



Collaborative Projects, support to industrial research and experimental development in business firms



Long – term, Strategic Partnerships and Co-creation Spaces



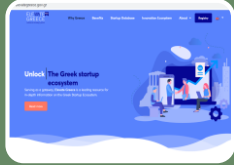
Competence Centers, Innovation Clusters, Digital Innovation Hubs



Innovation Districts: Attica / Industrial Area “ΧΡΩΠΕΙ” & Thessaloniki/ ThessIntec)

Pillar 1: Investment in innovation

1.2: Innovative Entrepreneurship



Support to innovative start-ups, Registry “Elevate Greece”



Financial Instruments /Equifund – Innovation Window(possibly in combination with grants for risky ventures), on the job training/ coaching for young entrepreneurs, Support to Business Angels



Intermediaries: Technology Transfer Offices



Support for Patenting Activities



Use of Pre-commercial Procurement

Pillar 2: Research excellence and capacity

2.1 Human potential



Reverse Brain Drain: support for short/ medium term stays of Greeks of the diaspora and foreign researchers to Greek RTOs and business firms



Combat Brain Waste: Industrial PhDs, Skills (including digital skills)



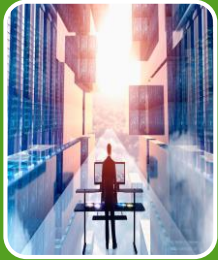
Incentives for vertical mobility of researchers (from industry to academia and vice – versa)



HFRI: Support to research excellence and curiosity driven research

Pillar 2: Research excellence and capacity

2.2 Public Research Infrastructures



Multiannual Budgeting Plan of National Research Infrastructures 2014-20



Internationalization of the Greek RIs – Networking to European (ESFRI) and to international facilities



Towards a National Road Map of Research Infrastructures (further support , following evaluation, to the best RIs funded in 2014-20, establishment of new ones, if necessary)

Pillar 3: Societal Challenges/Science and Society/ Support to policies



Flagship Initiatives: National network for COVID 19, Personalized medicine for cancer, cardiovascular and neurodegenerative diseases, Climate change, Sustainable food value chains: wine, olive oil, honey



RTDI diffusion, raising public awareness, success stories, best practices, promotion of research careers, awards etc.



Support to national and European policies: Blue Growth, Green Deal, Circular Economy, Decarbonization & Industrial Transition, Biodiversity, Security etc)

Horizontal Dimension: Internationalization / Integration into global value chains



Support international networking of businesses and RTOs /
HORIZON EUROPE - widening



Access to international infrastructures and facilities (ESFRI, CERN, EMBL etc.)



Participation to international networks to tackle Societal Challenges



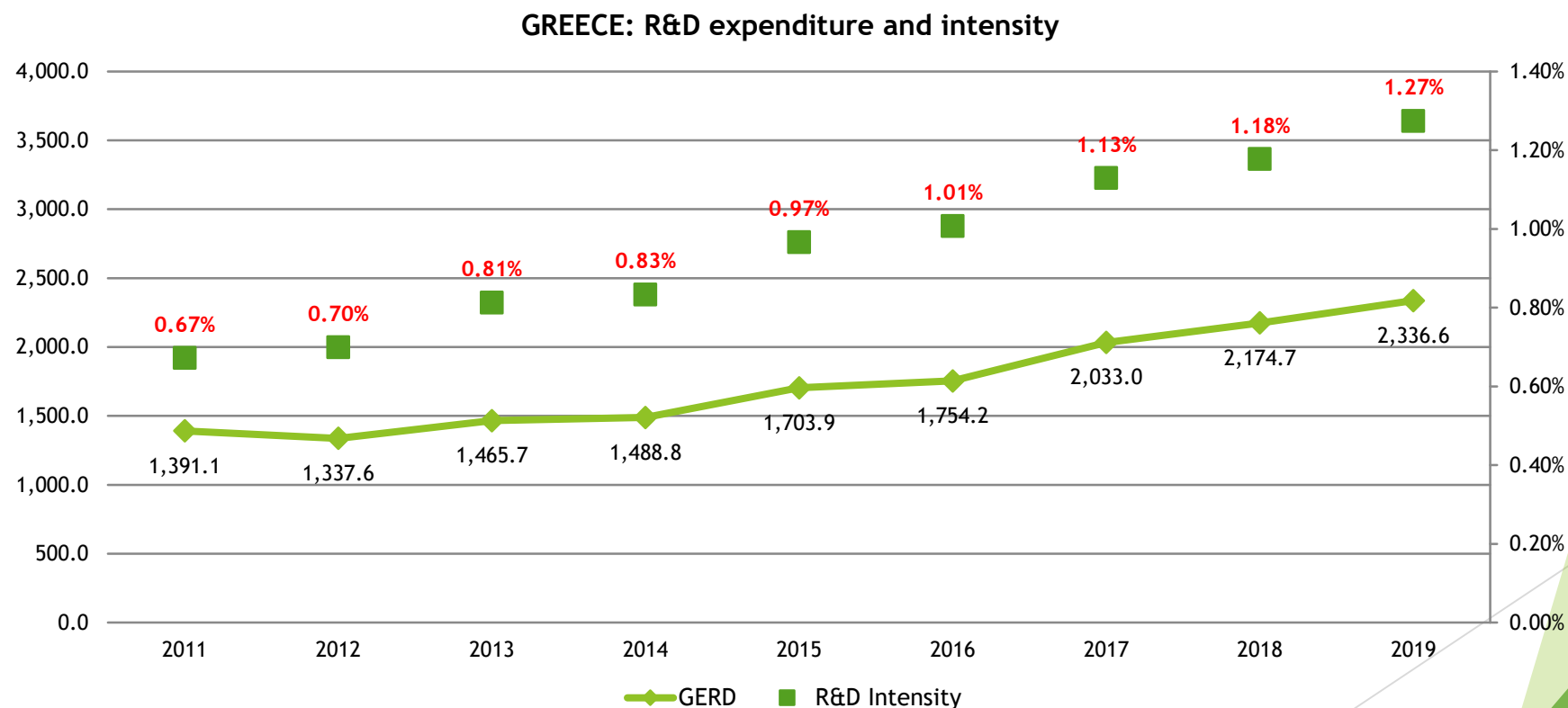
Bilateral Cooperation (Germany, China, Russia, Israel/ USA, Cyprus in the pipeline)



Integration into ERA / Participation to ERA initiatives (Art. 185/ PRIMA (R&I Partnership in the Mediterranean Area), Euro-HPC (High Performance Computing), participation in 13 out of 14 EU Partnerships/ 1st batch)

R&D Expenditure and Intensity in Greece

2030 R&D Intensity Target: 1,81% of the GDP



R&D Expenditures, total and by sector of performance, 2011-2019





MINISTRY FOR DEVELOPMENT
AND INVESTMENTS

GSRI

GENERAL SECRETARIAT FOR
RESEARCH AND INNOVATION



Thank you for your attention!

Dr. Agnes SPILIOTI
S&T Policy Planning Directorate

