

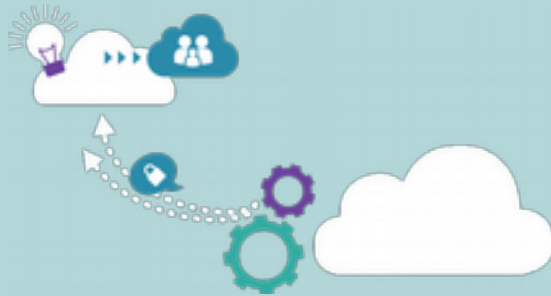


The Stairway to excellence (S2E)

Boosting regional growth through innovation

Brussels, 08 March 2017
europa.eu/!Wx96NN

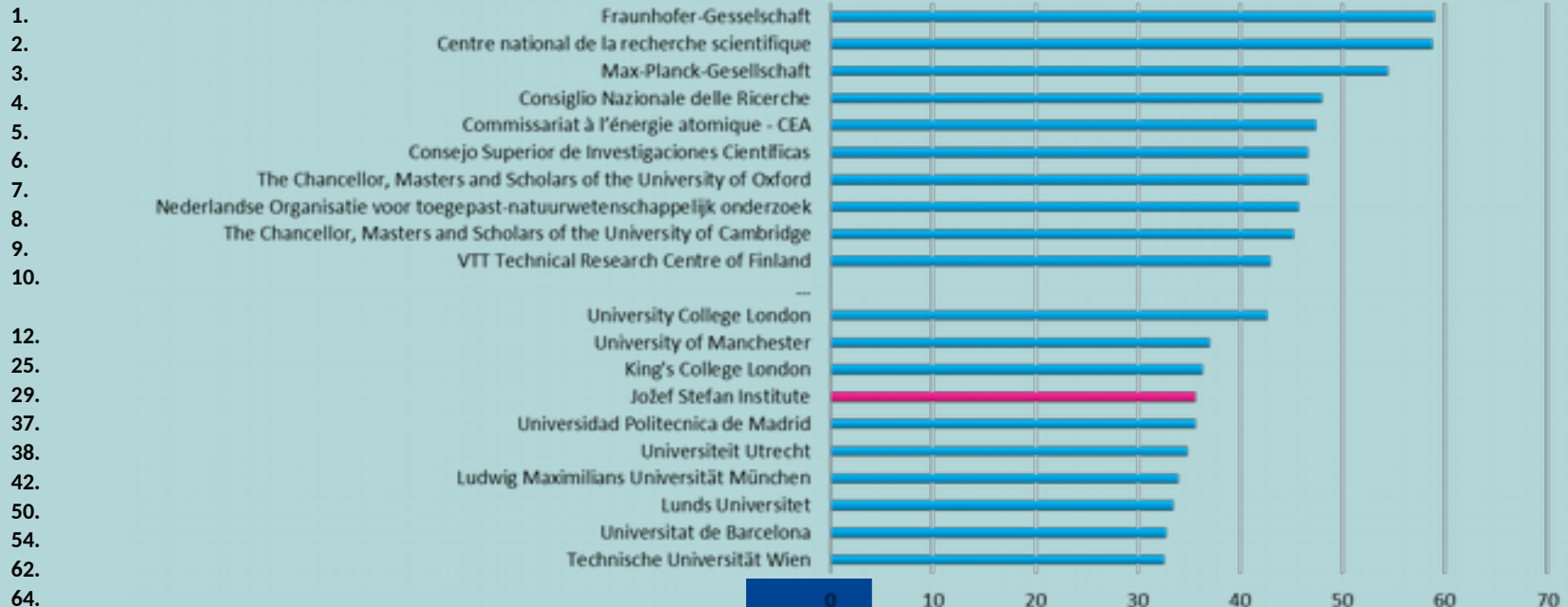
Dr. Špela Stres, MBA, LL.M.
Head Center for Innovation





European Research Ranking – Top Institutions

Top European Research Institutions



Jožef Stefan Institute



1946-2017, Who are we

Leading Slovenian Scientific Research Institute in Basic and Applied Research

~ 1000 specializes in Natural Sciences, Life Sciences and Engineering

> 20% of Habilitated at Inter/National Universities, Internal Scientific Advisory Board

Mobility of Researchers, All PostDocs need to go abroad, Good incentive system

34% Budget from Other Sources



Jožef Stefan 1835 - 1893

The Jožef Stefan Institute is named after the distinguished 19th century physicist Jožef Stefan, most famous for his work on the Stefan-Boltzmann law of black-body radiation.

Jožef Stefan Institute



1946-2017, **What makes us**

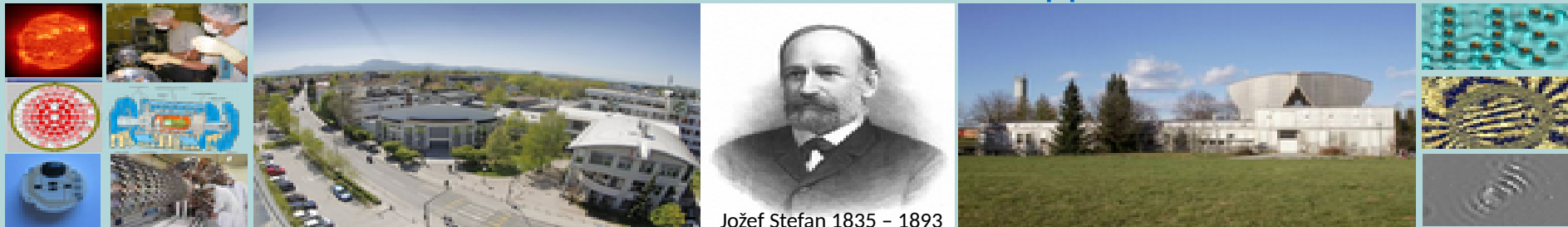
Continuous Competitive National Fin Support + Basic→Industry Supporting Science

Critical Mass + Multiple Disciplines enabling Interdisciplinary Research

Fusion of High Level Research / University Teaching + Excellent internal governance

International Interconnectivity + Personal Initiative of Researchers

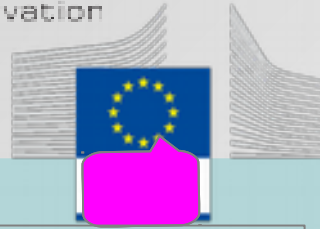
Routine Lookout for available Sources and Collaboration Opportunities



Jožef Stefan 1835 - 1893

The Jožef Stefan Institute is named after the distinguished 19th century physicist Jožef Stefan, most famous for his work on the Stefan-Boltzmann law of black-body radiation.

Coordination within and of JSI How did we get there:



on the national level

2016 an **Assistant Director for EU matters**

-Structured dialogue with the ministries, relevant players on the national level

2016 a **Smart Specialization Strategy Action**: Strategic partnerships introduced by our Ministries

-A meeting place for research institutions, universities and institutes alike, supporting ValueChain growth

2014 a **NCP Body** with a leader

-An entrance point to the organized/connected NCPs.

-Regular meetings with invited stakeholders.

2011 a **Center for innovation and technology transfer** - centralized internal

-A contact point for partnership searches, project proposal preparation

-IPR management

-Decisionmaking on suitable project proposals is left to the researchers

2008 an **Internal International Office** – centralized internal

2007 a **Financial Support System** including FP projects – centralized internal

50s Scientific Advisory Board; 60s Elected positions; 70s IPR Mngmt; 80s TTO; 90s Specializations Abroad



Thank you!

More info: spela.stres@ijs.si