



Joint Research Centre (JRC)

The European Commission's in-house science service. Serving society, stimulating innovation, supporting legislation.





European Commission

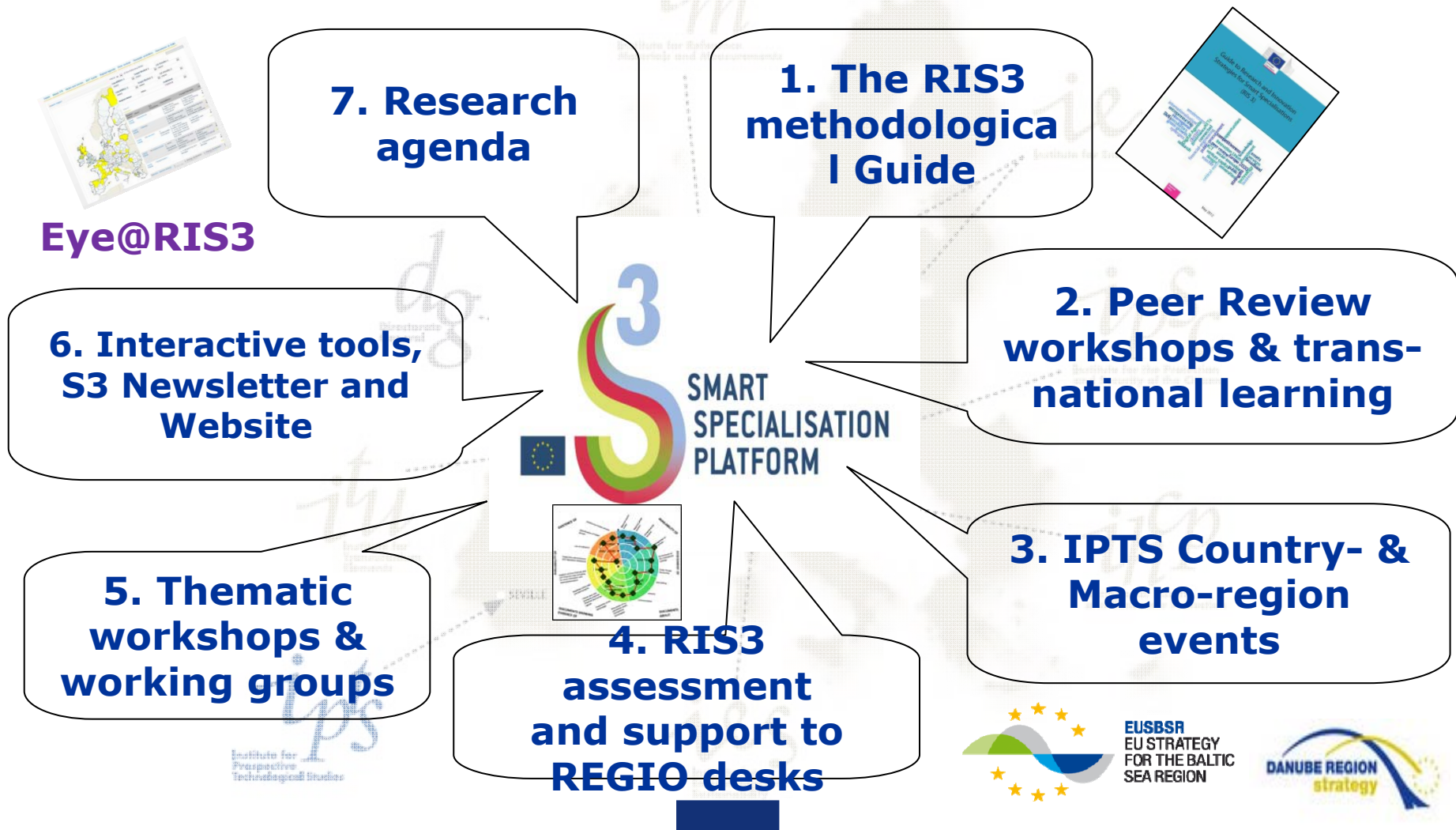
JRC-IPTS: 6 Units




S3 Platform:




supporting preparation & implementation of RIS3



WHAT IS SMART AND WHAT IS SPECIALISATION?

- 
1. Place **evidence based**
 2. Not top down decision, but **bottom up** partnership approach
 3. **Global perspective** on potential advantage & potential for cooperation
 4. Source in **Knowledge, services, technologies, talent and investors**

- 
1. **Priority setting** in times of scarce resources
 2. **Excellence** in something specific
 3. Accumulation of **critical mass**
 4. Not necessarily focused on a single sector but **cross sectorial approach**

“... largely about the policy process to select and prioritise fields or areas where a cluster of activities should be developed, and to let entrepreneurs discover the right domains of future specialisation” (D. Foray et al. 2011)



Overview

European Parliament Preparatory Action aims:

- facilitate the refinement & implementation of RIS3 strategy in REMTh
- serve as a model for other convergence regions in Greece and Europe

Implementation:

- September 2014 – November 2015
- Carried out by EC-JRC-IPTS through administrative agreement with DG REGIO, in close cooperation with the Managing Authority of REMTh and with the support of experts, including "critical friends"



Implementation: Five Core Activities

- 1. Stocktaking and assessment;*
- 2. Testing and optimising entrepreneurial discovery process and broader RIS3;*
- 3. Supporting outward looking industry in seeking technological solutions with R&D&I bodies;*
- 4. Designing, testing and optimising measures to enhance human resources and address 'brain drain';*
- 5. Cooperation, communication and replicability.*

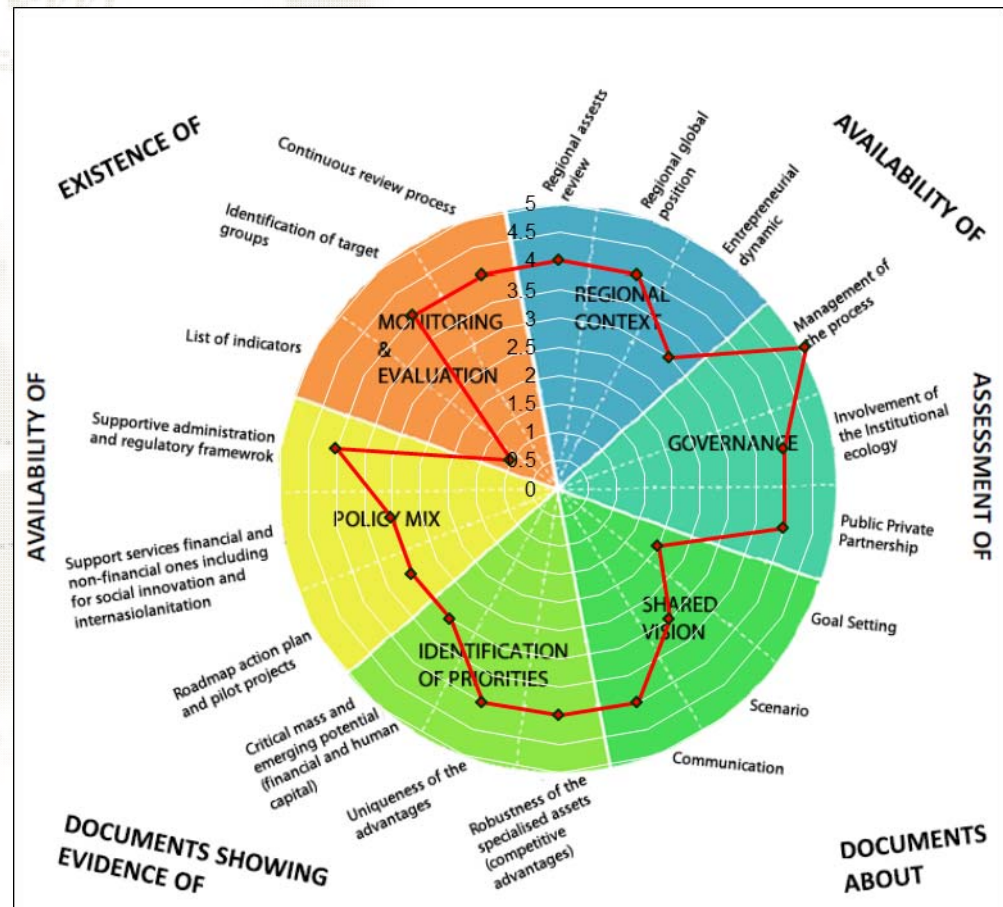


European
Commission

2. Testing & optimising entrepreneurial discovery process

- Mobilisation of stakeholders: public authorities, business, university, research and technical institutes, users and citizens
- Examination of opportunities, gaps and barriers
- Entrepreneurial Discovery Focus Groups
- In-depth peer review event focused on REMTh
 - *Discussion of common issues with peers from other regions*
 - *Builds on format of S3P peer reviews, where regions and countries review each other's work on RIS3*
- Recommendations and support for RIS3
 - *interactions between actors and structure*
 - *follow-up: evaluation & monitoring*

Self Assessment Tool



Elaborated from the original proposal by C.Saublens, EURADA

3. Supporting outward looking industry in seeking technological solutions

- Strengthening links between industry and research
- Stakeholder Guide to funding sources and processes
- Participatory events – implementation focus groups
- Selection and implementation plan for pilot proposals
 - *Monitoring and evaluation*

4. Measures to enhance human resources and address 'brain drain'

- Mobility research training
 - *Good practices across EU & fora for interaction*
- Exploitation of technological facilities in REMTh
 - *match capacities with business needs and opportunities*
 - *Complementary human resource strategies*
- Maximise export potential and attract FDI
 - *Assess capacities and identify tools*
- Policy Infrastructure support for MA
- Cooperation with peers

5. Cooperation, communication & replicability

- Identification and mobilisation of stakeholders
 - *board of critical friends*
 - *encourage cooperation and exchange of good practices*
 - Identify elements for replication
- Dissemination
 - *Ongoing communication: web-based (and translated)*
 - *Complementary Activities- S3P events*
- Final events
- Evaluation study



European
Commission

Board of Critical Friends

- ~6 Experts facing similar challenges and/or developing good practices
- European Policy makers, academics, consultants experienced in various aspects of RDTI and RIS3
- Mandate:
 - *To actively participate in selected project events*
 - *To provide guidance and feedback on project activities*
 - *To share relevant experiences with REMTh*



European
Commission

Expected outcomes: priorities & processes

- Effective entrepreneurial discovery process and governance structure for smart specialisation;
- Refinement of a set of priorities;
- New/enhanced measures to support and monitor RIS3 implementation;
- Effective cooperation between SMEs and RDI;
- Visible cooperation with other regions;
- Identify & establish good practices to be exchanged;
- Information & guidance for local R&D & business actors;
- Identification of the legal and administrative barriers;
- Improved absorptive capacity for structural/other funds.



Expected benefits for REMTh & beyond

- In depth understanding of process of refining & implementing RIS3
- In depth understanding of challenges of collaboration between the local & international levels
- In depth understanding of institutional shift required by RIS3 approach
- Opportunity to refine RIS3 approach for EU and target future activities
- Basis for replicable model for other regions



Project news and updates

<http://s3platform.jrc.ec.europa.eu/remth>



Thank you!

