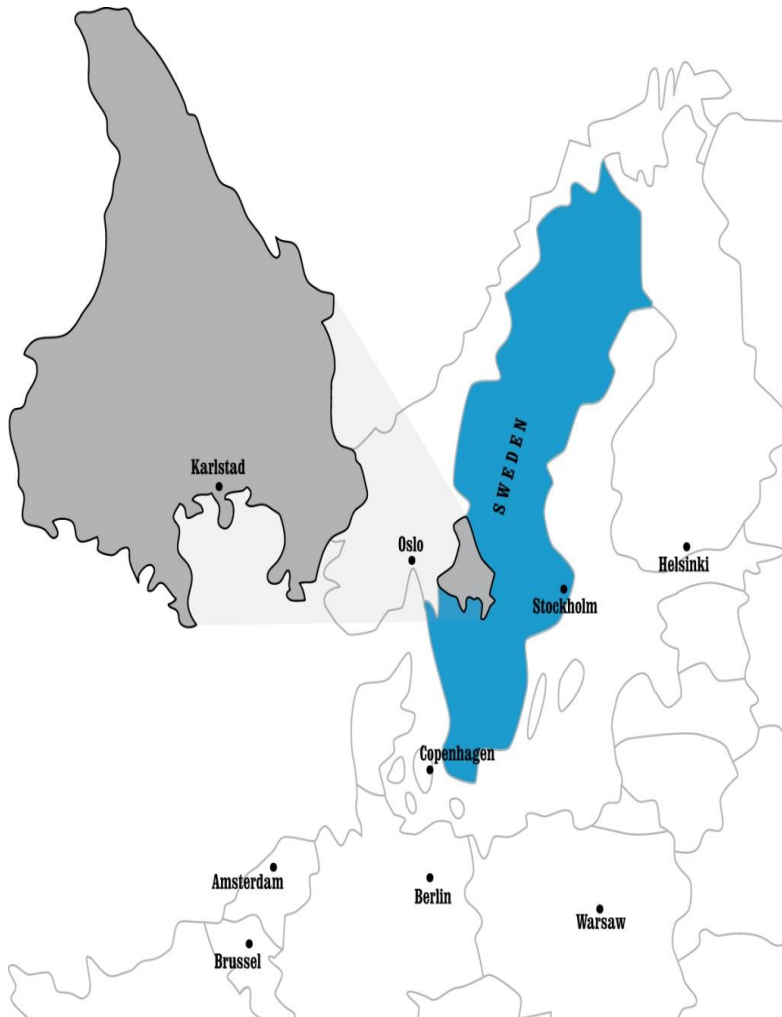


# Värmland

## Governance of the RIS3

*from design to implementation*

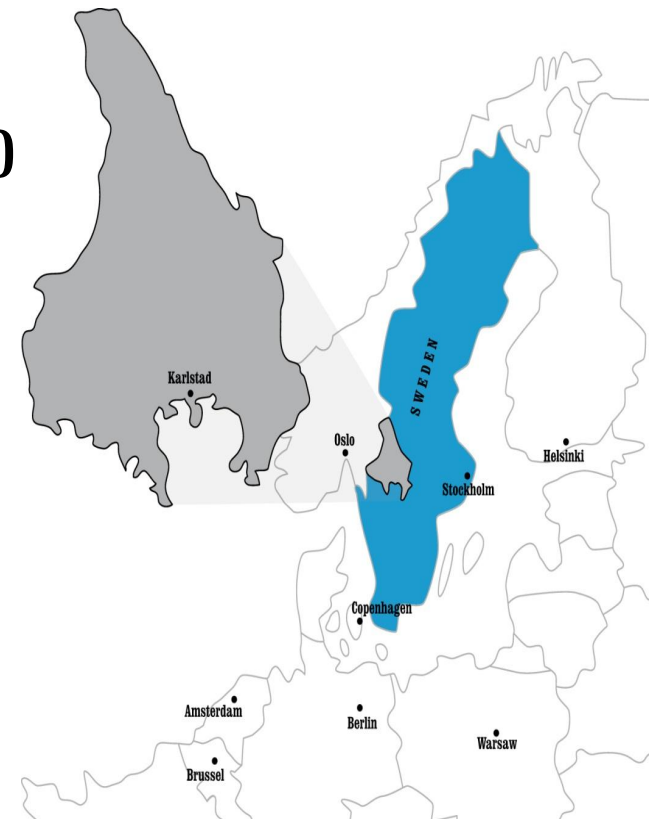


**Sibiu, 27-28 May 2015**  
**Anders Olsson**

Research and Innovation Manager  
Region Värmland

# Värmland

- Surface area: 18 000 km<sup>2</sup>
- Population: 274 000 inh
- Unemployment rate: 9 % (2014)
- Higher education: 20 % (age of 20-64 years)
- 5,8 companies per 100 residents
- 1 university + 1 branch
- 2 institutes
- Innovation follower

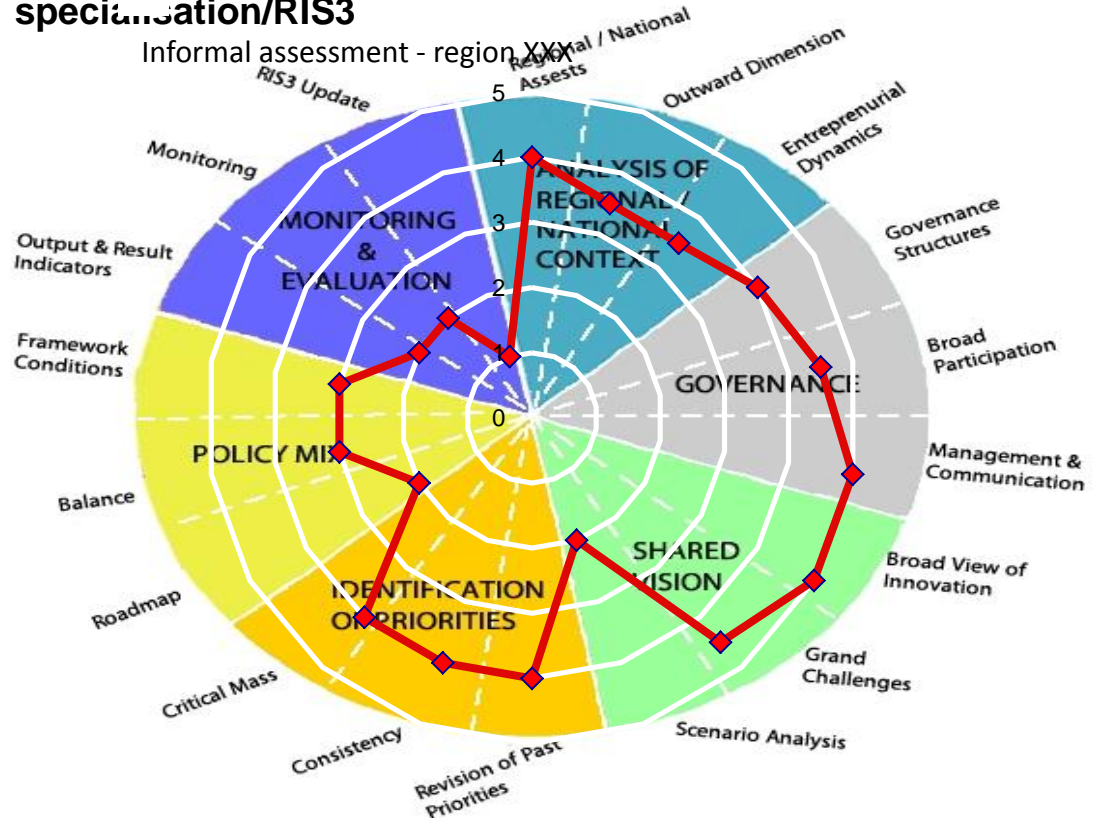


# Brief overview of your region's work on S3

- **Self-assessment**

- Värmland has worked through the first four steps in the RIS3-process – from Analyse to Priority.

## Driving economic change through smart specialisation/RIS3



Source: S3 Platform/EURADA

Information and a link to the tool that will generate your wheel is available here:

<http://s3platform.jrc.ec.europa.eu/ris3-assessment-wheel>

# Which issues would you like to discuss and why?



## •Please, indicate:

-Main successes achieved so far in RIS3 **Governance** development and implementation

- Mobilization among researchers, especially those in the bio-economy field.
- Framework for a new research agreement with Karlstad University.
- Clusters incorporated S3 in their visions and strategies.
- Large consensus among the politicians.
- ERRIN: co-lead in working group for S3.

-Main bottlenecks in RIS3 **Governance** development and implementation.

- Uncertainty about how politicians want to organize the regional partnership.
- Uncertainty on how Region Värmland intends to be involved in mutual European learning – participation in Interreg Europe.

# Which issues would you like to discuss and why?



- **Please, indicate:**
  - Questions you would like peers to discuss after your presentation:
    1. Organisation of a regional innovation partnership
      - a) Horizontal and vertical dimensions.
      - b) The role and mandate of the partnership.
      - c) How to motivate the politicians to establish a regional innovation partnership (so far, they have favoured bi-lateral relations and dialogues)?
    2. What key processes should we undertake for an effective governance of RIS3?
    3. Balance between efforts (time and costs), versus benefits of monitoring (evidence based – triangulation).

# Brief overview of your region's work on S3



- **S3 Current Status**

- The work forming a RIS3 in Värmland took off in March 2014. The strategy was adopted by the board of Region Värmland last week.
- We have already started to implement the strategy. Focus on a forest-based bio-economy for our EU-office in Brussels. ERDF application for cluster projects. PP and Compare, etc.

- **S3 Governance**

- Region Värmland is responsible for the design process and the implementation.
- Region Värmland will probably also be responsible for monitoring and evaluation.
  - **How is the Governance set-up of your RIS3?**
- There is no governance set-up yet. (Academy for S3?)

# Your region's S3 Priorities

- **Regional priorities**
  - How are these priorities defined?
  - Which economic sectors and actors do these priorities represent?

# Smart specialisering a' la Värmland

- Smart ways to organise and develop existing regional assets to create value for both end users and community
- The specialisations concern both what we are good *at* and what we are good *for*
- Value creating services: innovations always depart from the customer and end user perspective.
- Gender integration

# Your region's S3 Priorities

## MARKET DRIVERS

End-users

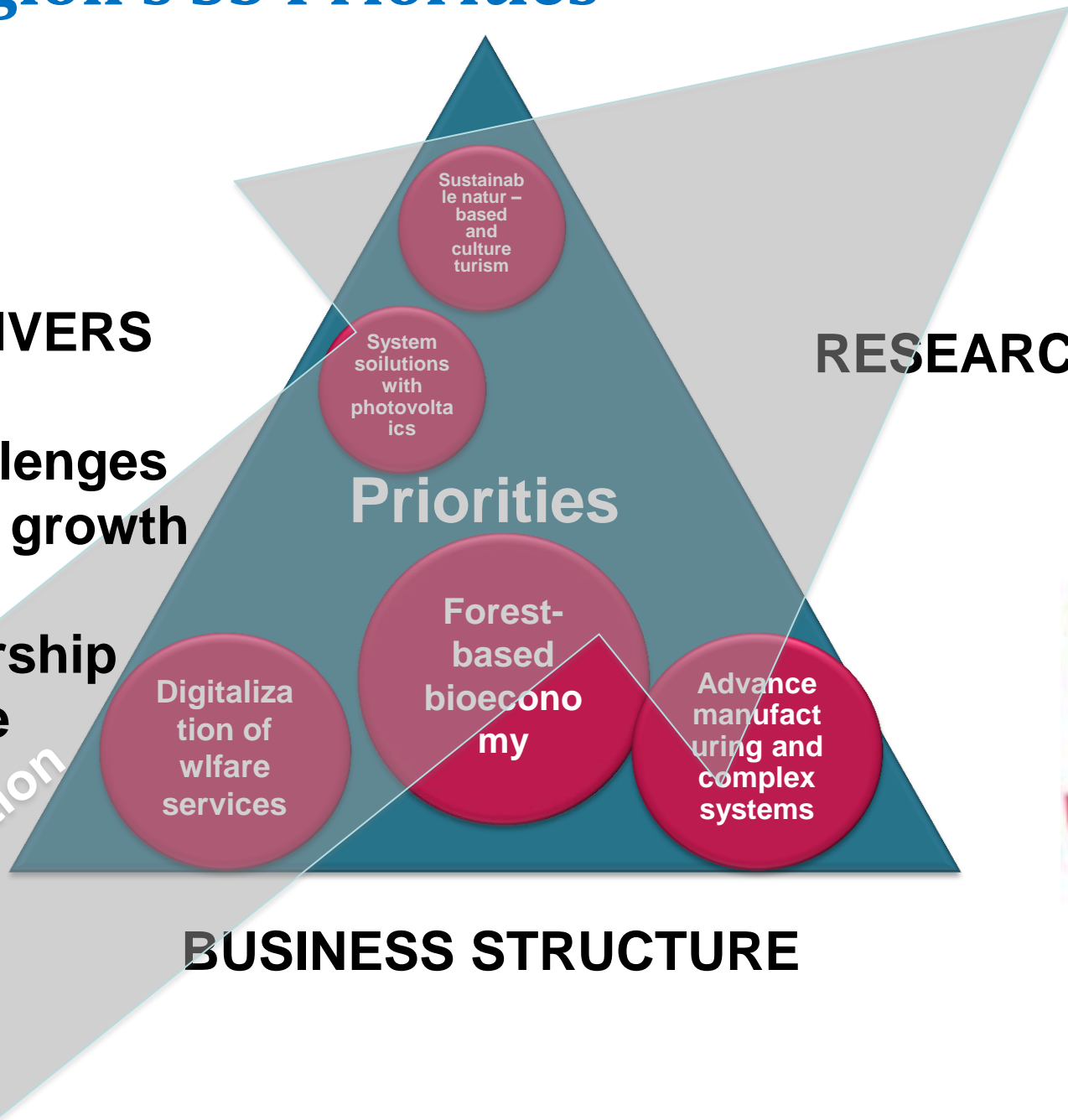
Societal challenges

Markets with growth potential

Entrepreneurship

EU-relevance

Value creation services



# Your region's S3 Priorities

- **National priorities**
  - No clearly outspoken priority when it comes to sectors or competence areas.
  - More about framework conditions and innovation among different kind of actors.
- **Regional-National links**
  - A field for regions to form partnerships in areas of specialisation witch might be national priorities in the future?

# Your region's priority-setting process



- **The Entrepreneurial Discovery Process (EDP)**
  - How has the EDP been carried out? Who has been involved?
    - The EDP is a process with a history in Värmland.
    - Open Space and workshops.
    - Formulating and testing hypothesis for smart specialisation against some criterias.
    - The Clusters and the business sector, the university, the municipalities, the county council and Region Värmland involved.
    - The Värmland RIS3 can be considered as a snapshot of an ongoing EDP.

# Towards a strategic policy-mix to support S3 priorities



- **Policy instruments**

- Value creating services – service innovation.
- Research agreement with the university – building research capacity and capacity for research at companies.
- Academy for smart specialisation. The Knowledge Triangle.
- Business development by clusters.
- Profiling, marketing of Värmland. Promoting direct investments in the S3-areas – Business Värmland.
- Education and competence supply
- Region Värmland European office – VRIS3 is a priority for them – involvement in EU policies in our areas of smart spec.
- Gender projects.

# Towards a strategic policy-mix to support S3 priorities



- **S3 budget**
  - ERDF: Investment priority 1
  - National funding for regional development (managed by us – Region Värmland), regional and local funding
  - Other national funding to RIS3 unclear right now – much up to regional actors to apply when calls match RIS3

# Towards a strategic governance to support S3 priorities



- **Actors**

- Are the relevant actors for the S3 priorities involved? If so:
  - The relevant actors have been involved in the forming of the RIS3 and will be involved in future work.
  - Future roles for the actors are unclear right now.

- **Coordination mechanisms**

- The national Innovation Council!
- National authorities.
- National – Regional dialogue (in the national regional development strategy).
- Region – region cooperation.
- The steering Committee for the Academy for smart spec.
- Cross boarder smart specialisation with Norway
- (RIS3 in Norway – a window of opportunity now!)
- The Värmland EU office in Brussels.

# Measuring and assessing RIS3



## **Mechanisms**

- Coordinated with the Värmland strategy.
- Self assessment and peer evaluation.
- A triangulation methodology would be an interesting option.

## **Indicators**

- Indicators is a difficult area.
- We are not there yet.

## **Follow up**

- Follow up and update the strategy and make new priorities.
  - I guess once during the program period.

# Summary and next steps

- **Conclusions:**

- A mobilization of researchers and the clusters.
- The most unifying and mobilizing strategy for the Region Värmland ever.
- The most clearly formulated prioritization of development areas that the region has ever had.
- Main bottlenecks in RIS3 development and implementation are Governance structure and Monitoring

Good to add service research in a separate strategy.

The forest speaks for itself. Good to combine the two aspects without too strongly emphasize what the new should be. Here are held packaging but without special status.

Digitization of medical care is also obvious and benefit from the description that is about focusing on existing and taking into use rather than new ideas.

Very good writing "system for solar." Is close to *Off the grid* which ended up at the cutting edge right now.

# Which issues would you like to discuss and why?



- **Please, indicate:**
  - Questions you would like peers to discuss after your presentation:
    1. Organisation of a regional innovation partnership
      - a) Horizontal and vertical dimensions.
      - b) The role and mandate of the partnership.
      - c) How to motivate the politicians to establish a regional innovation partnership (so far, they have favoured bi-lateral relations and dialogues)?
    2. What key processes should we undertake for an effective governance of RIS3?
    3. Balance between efforts (time and costs), versus benefits of monitoring (evidence based – triangulation).

- **Why:** About mobilisation, inspiration, legitimacy, prioritizing etc.
- **What has been done:** in earlier processes proposed concepts for a partnership for the politicians.
- **What worked:** the steering group for the research agreement.
- **What did not work:** The steering group for the cluster strategy was never formed.