

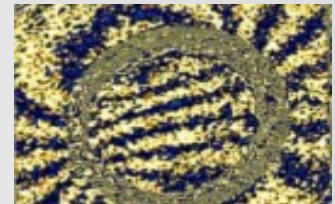
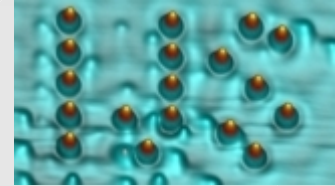


Jožef Stefan Institute and its EU projects

Dr. Špela Stres, LLM, MBA

The Jožef Stefan Institute in Numbers

- The Jožef Stefan Institute is the **leading Slovenian scientific research institute**, covering a broad spectrum of basic and applied research.
- Staff number: approx. **1000** specializes in **natural sciences, life sciences and engineering**.
- Over **20%** of researchers from the institute are habilitated at Slovenian and International universities.
- Good international interconnectivity.



2016: Smart Specialization and RRI projects

Barriers on national level

Approval of S4 (slovene smart spec.strategy) in 2015
Project calls issued in January 2016
Strict limitations from the government

EU Strategy for the Adriatic and Ionian Region – EUSAIR: Adriatic Programme
EU Strategy for the Danube Region- EUSDR: Danube Programme
EU Strategy for the Alpine Region – EUSAR: Alpine Programme

2016: Other relevant programmes, Barriers

Slow national cost approval system leading to insolvencies (FLC)
Non-adaptive internal system to programme cost structures

What JSI is doing to implement this synergies?

What are the criterias to decide in which proposals the JSI collaborates?

We accommodate:

- national funds from the national budget line
- national ERDF (European Regional Development Fund (ERDF), the European Social Fund (ESF), the Cohesion Fund (CF))
- transnational (ESIF - ERDF (Danube, Alpine, Adrion Programmes, South East Europe, Central Europe))
- H2020 (ERC, FET of Excellent Science, Industrial Leadership, Societal Challenges)

Consultations to our researchers on what sources they can combine ...

2.2.2 Derogation of non-cumulative principle for combination with Horizon 2020¹⁶

ESIF
Art. 65(11) CPR: "An **operation** may receive **support** from one or more European Structural and Investment Funds or from one or more programmes and from other Union instruments, provided that the **expenditure item** included in a request for payment for reimbursement by one of the ESI Funds does not receive support from another Fund or Union instrument, or support from the same Fund under another programme."

Horizon2020
Article 37 Rules for Participation:
"Cumulative funding:
An **action** for which a **grant** from the Union budget has been awarded may also give rise to the award of a grant on the basis of Regulation [Horizon 2020] provided that the grants do not cover the same **cost items**."

Coordination within and of JSI on the national level

- Since 2016 we have an assistant director for EU matters
 - Structured dialogue with the ministries, relevant players on the national level
- Since 2015 there is a lobbying national body for innovation SIS
 - (slovene innovation point)
 - A meeting place for research institutions, universities and institutes alike
- Since 2014 a NCP body with a NCP body leader as an entrance point to the NCP system with regular meetings with invited stakeholders
- Since 2011 centralized internal center
 - A contact point for partnership searches, project proposal preparation
 - IPR management
 - Decisionmaking on suitable project proposals is left to the researchers
- Since 2008 centralized internal international office
- Since 2007 centralized internal financial support system including FP projects

Possible issues

- How to assure relevant input when on the search for suitable project calls
- How to set up a strategy on the national level to accommodate the national needs
- How to assure easy and proper co-financing of different sorts of projects
- How to support in administrative issues
- How to support in partner search and project preparation



Thank you!

For more information please visit:
<http://tehnologije.ijs.si>