



# **Stairway to Excellence (S2E)**

## **Achieving better synergies between ESI Funds and other EU Funding Programmes**

**Andrea Conte, PhD**

**European Commission, DG Joint Research Centre**

**Prague**

**3/03/2015**

# Objectives

S3P supports MSs & Regions to design and upgrade their RIS3 by identifying a limited number of R&D and industrial activities with high innovation potential.

- This innovation potential may be further reinforced & developed by using ESIFs in order to make catching-up MSs & regions more competitive in spatially blind & excellence-based H2020 calls.
- Beyond a stronger innovation generation capacity, there is room for increasing the innovation absorption capacity by new MSs in the context of past FP projects.

The project has **two main objectives**, namely:

- The provision of assistance to EU13 to enhance the value of these two EU funding sources for R&I by promoting their combination;
- Stimulating the early and effective implementation of national and regional Smart Specialisation Strategies.

# General macro-economic indicators

|   | <b>EU13*</b> | <b>EU15</b> | <b>EU28</b> |
|---|--------------|-------------|-------------|
| Population  | 105 127 027  | 401 484 800 | 506 611 827 |
| GDP - Euro per capita   | 10 417       | 29 800      | 25 700      |
| GDP - Euro per capita in % of EU average                      | 40.5         | 115.3       | 100         |
| R&D expenditure - Total (million Euro)                        | 11 521.81    | 260 036.97  | 271 558.78  |
| R&D expenditure - Total [% of GDP]                            | 1.05         | 2.09        | 2.01        |
| R&D expenditure - Business Enterprise Sector (BES) [% of GDP] | 0.54         | 1.34        | 1.28        |
| R&D expenditure - Government Sector (GOV) [% of GDP]          | 0.23         | 0.25        | 0.25        |
| R&D expenditure - Higher Education Sector (HES) [% of GDP]    | 0.27         | 0.49        | 0.47        |
| R&D expenditure - Private non-Profit Sector (PnP) [% of GDP]  | 0.004        | 0.02        | 0.02        |
| R&D Personnel** - Total (% of active population)              | 0.62         | 1.25        | 1.12        |
| R&D Personnel - BES (% of active population)                  | 0.25         | 0.69        | 0.60        |
| R&D Personnel - GOV (% of active population)                  | 0.15         | 0.15        | 0.15        |
| R&D Personnel - HES (% of active population)                  | 0.22         | 0.39        | 0.36        |
| R&D Personnel - PnP (% of active population)                  | 0.002        | 0.01        | 0.01        |
| Unemployment Rate***  | 9.9          | 9.50        | 9.60        |

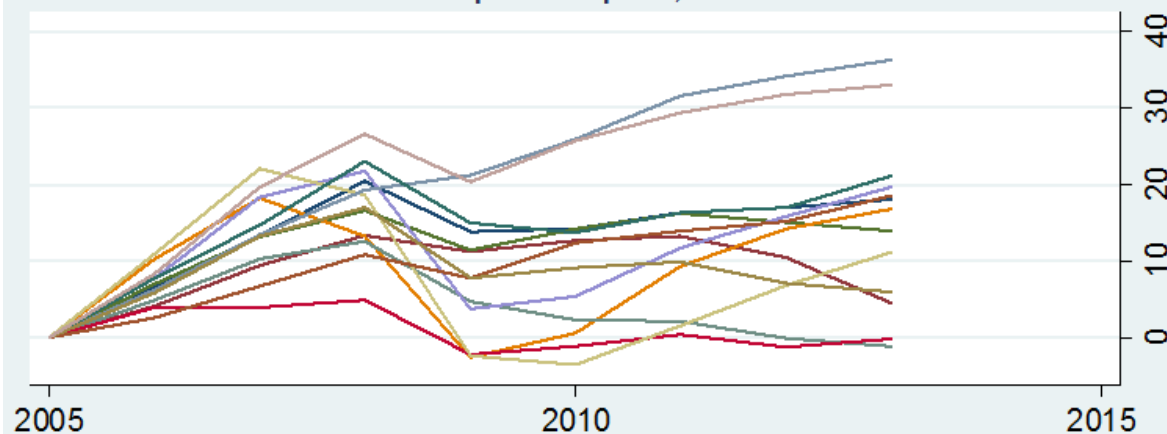
Source: Compiled and calculated by using Eurostat 2013

\* EU13 aggregate not available in EUROSTAT

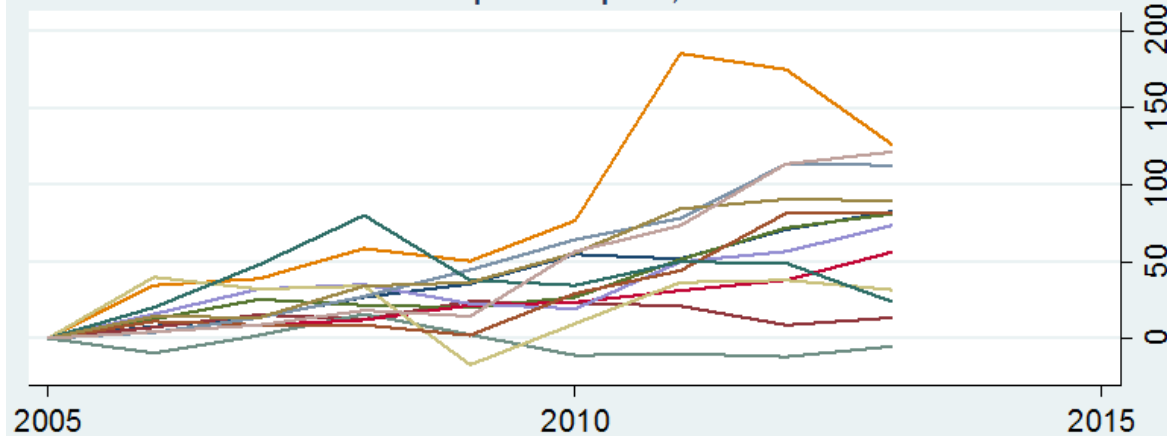
\*\* R&D personnel refer to the number of full time equivalent R&D personnel.

\*\*\*Unemployment uses latest available figures for 2013 age group 15 years and over.

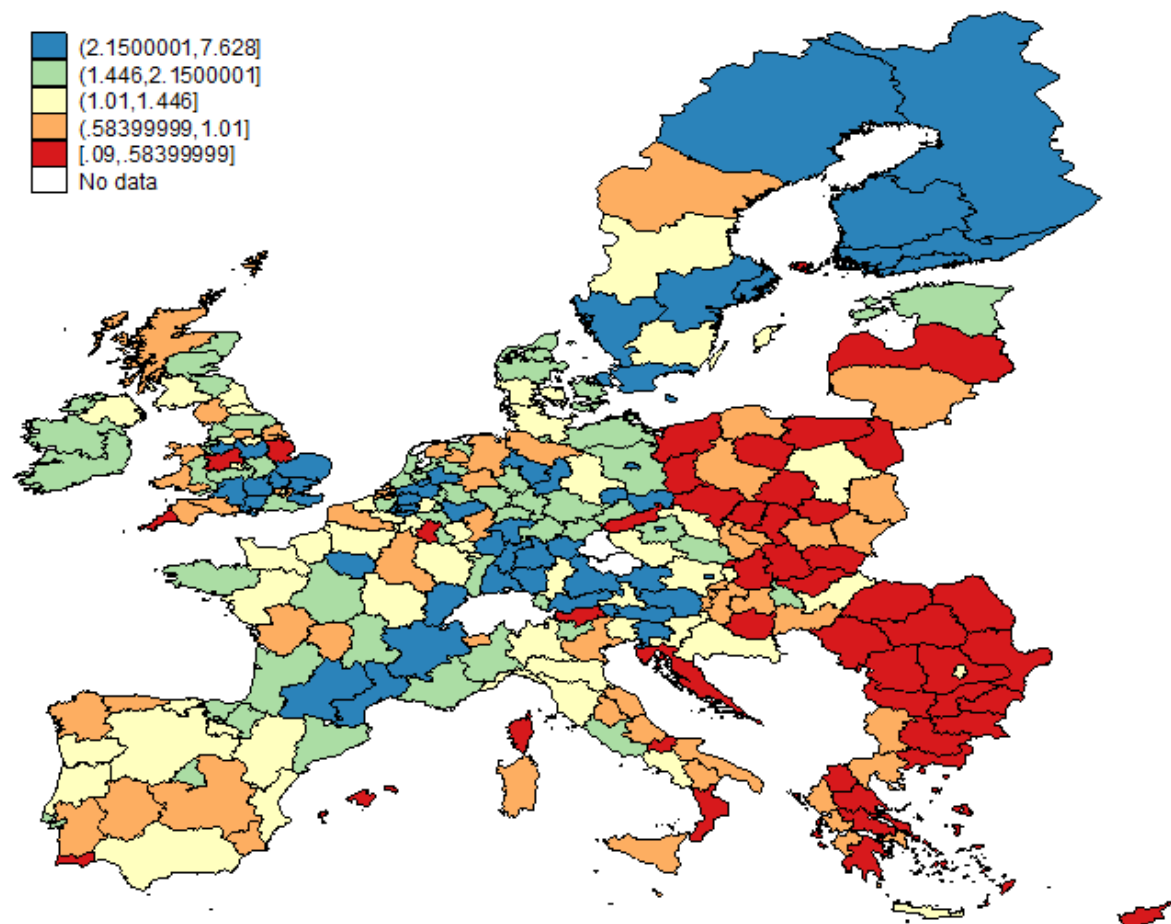
Real GDP per Capita, 2005=100



Real R&D per Capita, 2005=100

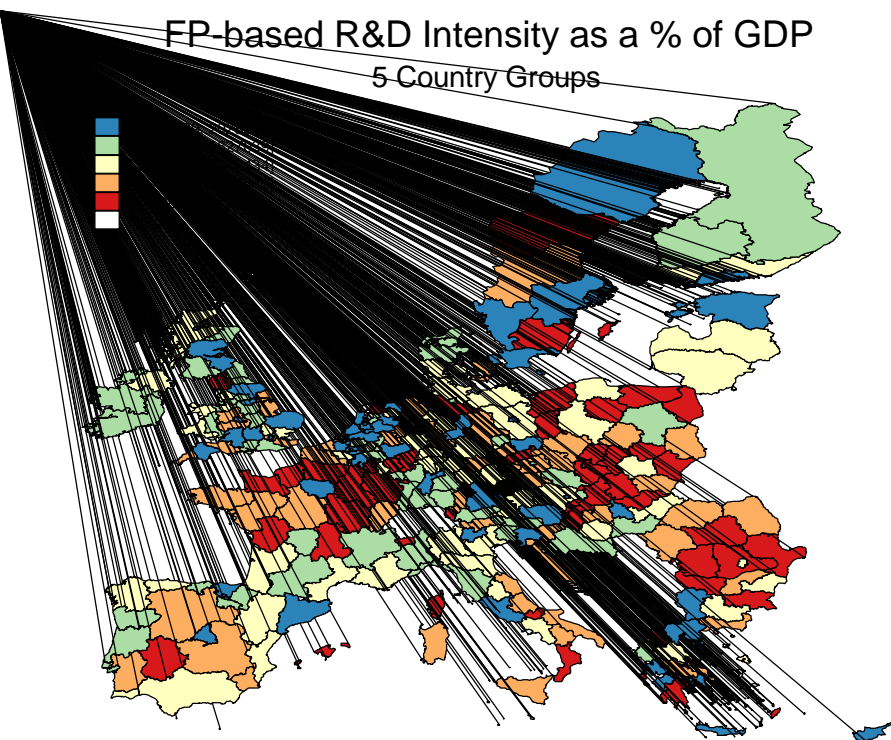


## Regional R&D Intensity as a % of GDP 5 Country Groups

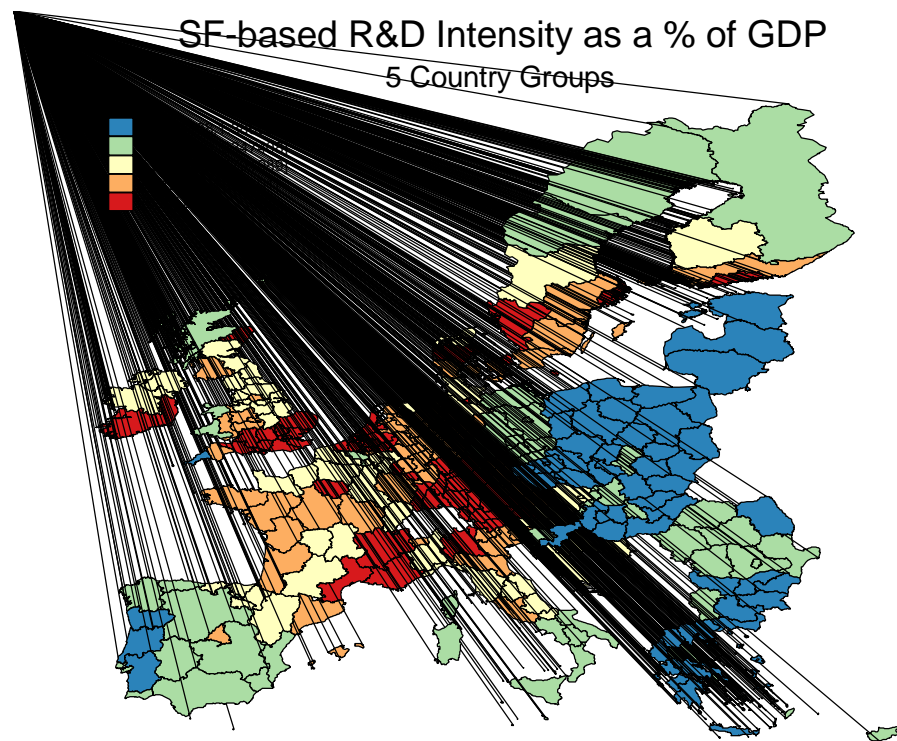


Source: JRC/PTS

## Funding Distribution of 7<sup>th</sup> FP and SFs



Source: JRC/IPTS



Source: JRC/IPTS

# S2E Web

## S3 Targeted Support

[RIS3 in REMTh](#)

[Rural Innovation](#)

[Stairway to Excellence](#)

[What is Stairway to](#)

[Excellence](#)

[National Events](#)

[Country & Region](#)

[Information](#)

[Synergies Examples](#)

[Instruments, Platforms &](#)

[Concepts](#)

[Relevant Initiatives](#)

[Reference Documents](#)

[FAQ on S2E](#)

## Latest News

### CALL FOR CONTRIBUTION

**S3 Targeted Support**

CALL FOR CONTRIBUTION to  
forthcoming S2E events

### Latest S2E activity

**S3 Targeted Support**

Latest publications available on-line

### UPCOMING S2E National Events

## Stairway to Excellence

### What is Stairway to Excellence

The 'Cohesion Policy and the synergies with the research and development funds: the STAIRWAY TO EXCELLENCE (S2E)' project was launched in 2014 within the Smart Specialisation Platform (S3P).

The **Stairway to Excellence (S2E)** project aims to support [EU13 regions and countries](#) in developing and exploiting the synergies between European Structural and Investment Funds (ESIF), Horizon 2020 (H2020) and other EU funding programmes and:

- Assist them in closing the innovation gap, in order to promote excellence in all regions and EU countries;
- Stimulate the early and effective implementation of national and regional Smart Specialisation Strategies.

[Activities of S2E](#)

[Background for the Project](#)

### National Events

[National Events](#) are being organized in [EU13 Members States](#) to:

- Ease understanding of national and regional innovation ecosystems
- Raise awareness to enable synergies between EU funding programmes
- Share experiences in combining Structural Funds and Framework Programme to improve excellence
- Draw lessons for the future and identify follow-up actions to enhance potential synergies

### Country & Region Information

Quantitative and Qualitative information are produced for [EU13 regions and countries](#):

- [National and Regional Fact & Figures](#) aim to draw the European profile of a country/ region with statistical and financial information coming from the EU's 7th Framework Programme and Structural Funds dedicated to research and innovation.
- [S2E Country Reports](#) provide further analysis on selected policy issues that affect optimal use and the combination of key EU funds for R&I and offer country-tailored policy suggestions aiming to tackle the weaknesses identified in the analysis.





#### S3 Targeted Support

S2E organizes National Events in all EU13 Member States

## Related Links

Smart Specialisation Platform (S3P) [HomePage](#), and specifically:

- S3 Platform Membership Registered Countries and Regions
- Eye@RIS3
- Eye@RIS3 Specialisation Mapping
- Guides related to aspects of the S3

DG REGIO [HomePage](#)

## Contacts

Contact the S2E email box

Know the S2E Team members

More Specific contacts are available for the respective [registered Member States](#) on S3P, for instance:

- H2020 National Contact Points
- European Enterprise Network branches

## Synergies examples

[Synergies examples](#) are provided in which SF/ ESIF and FP7/ H2020 funds have been combined in order to amplify the R&I investments and their impact, using different forms of innovation and competitiveness support, or carrying innovative ideas further along the innovation cycle or value chain to bring them to the market.

## Instruments, Platforms & Concepts

Fiches are being made available on a selection of [European instruments/ platforms/ concepts](#) that can be considered as facilitators especially for "downstream activities", to exploit and diffuse results from earlier programming period (FP7) and current one (H2020), and as key elements in monitoring the implementation of synergies in their various forms.

## Relevant Initiatives, Projects and Platforms

Beyond the Reference Documents (below) and Related Links (left), there are a number of [Relevant Initiatives, Projects and Platforms](#) for Cohesion Policy and the synergies with the research and development funds.

## Reference Documents

We gather [Reference Documents](#) relevant to Cohesion Policy and the synergies with the research and development funds, including guidance for Policy-Makers, Implementing Bodies and Beneficiaries of EU Funds and instruments issued by the European Commission or other bodies.

## FAQ

[Frequently Asked Questions](#) relate to practical application of the Guidance on synergies between ESIF, Horizon2020 and other research, innovation and competitiveness-related Union programmes.

A [list of acronyms](#) is also available.

## Events

## Publications



# Eye@RIS3

- Research & Innovation Capabilities
- Business Areas & Target Market
- EU Priority

## EU Priority

Aeronautics & space ▼

Select

Aeronautics & space

Blue growth

Cultural & creative industries

Digital Agenda

Nature & biodiversity

KETs

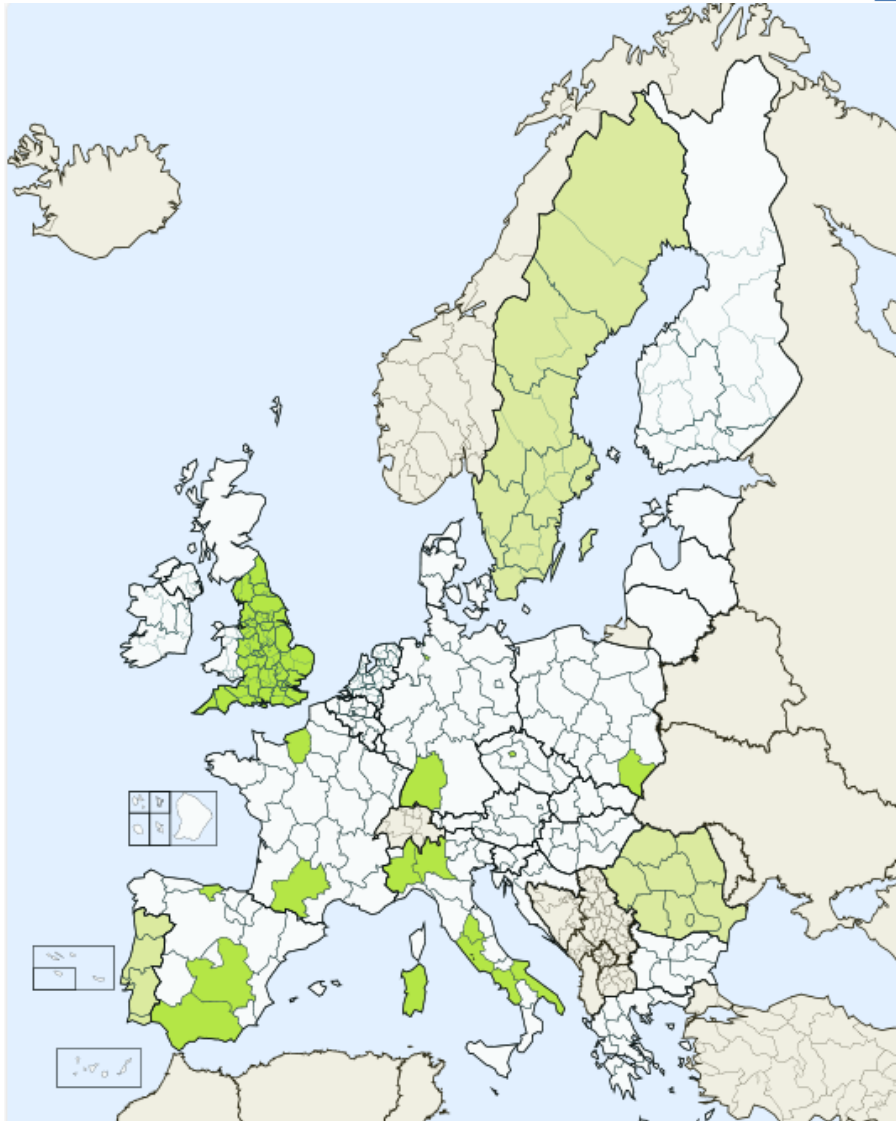
Public health & security

Service innovation

Social innovation

Sustainable innovation

Specific local policy priority



# National S2E Events

- **A better understanding of the national innovation ecosystem**
- **Raising awareness of the actions needed to enable synergies**
- **Sharing experiences in combining different EU funds**

The events are open to national and regional MAs, NCPs, national authorities in charge of RIS3, selected experts and representatives from business and research organisations.

Czech Republic

Lithuania (October 2015)

Malta (July 2015)

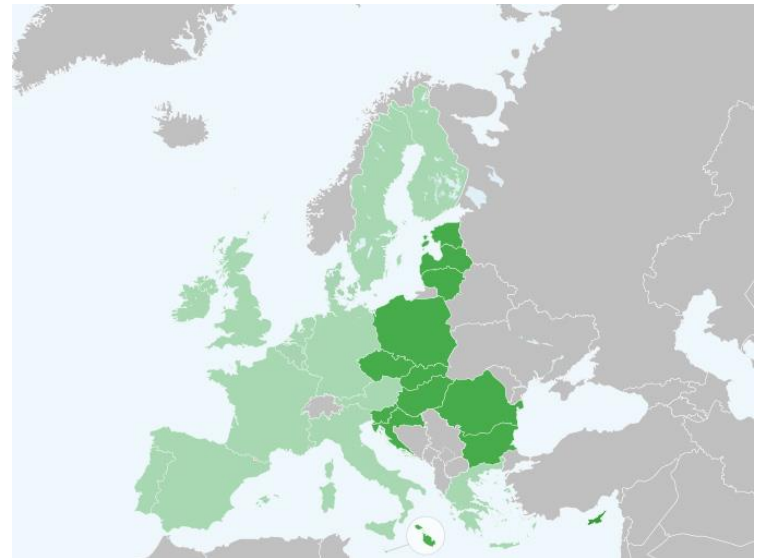
Slovakia (June 2015)

Latvia (April 2015)

Croatia (March 2015)

*Forthcoming Events: Estonia, Romania, Poland*

➤ ***Joint Statement of the National Event***



## JOINT STATEMENT OF THE NATIONAL EVENT OF LATVIA "The Synergies with Research and Innovation Funds"

*organised by*

European Commission, Joint Research Centre (Stairway to Excellence Initiative)  
Latvian State Education Development Agency  
15 April 2015, Riga-Latvia

1. Consensus for Better Coordination & New Opportunities
2. Upstream activities
3. Downstream activities
4. The Way Forward

*Key Issue 2: The need for improved research collaboration with the Central and Western European countries (EU15).*

**Potential Actions:** e.g. enhancing the network & learning (and adapting) from good practices across Europe.

**Key Issue 5:** Low rate of participation in international research collaboration  
**Key Issue 6:** Long-term availability (sustainability) of ESIF

**Potential Actions:** e.g. establishment of incubation centres, enhanced autonomy for public universities, institute-dedicated budget, alignment of national funds and performance-based funding.

# Thank you!



<http://s3platform.jrc.ec.europa.eu>

[JRC-IPTS-S3PLATFORM@ec.europa.eu](mailto:JRC-IPTS-S3PLATFORM@ec.europa.eu)

[JRC-IPTS-S2E@ec.europa.eu](mailto:JRC-IPTS-S2E@ec.europa.eu)