

Synergies between ESIF and EIT instruments: focus on KIC InnoEnergy and Climate KIC



CLEANTECH
BULGARIA

The Stairway to Excellence - Synergies between European Structural and
Investment Funds (ESIF) & Research and Innovation Funding
14 July 2016, Sofia, Bulgaria

Mariyana Hamanova – Executive Director
Cleantech Bulgaria



European Institute of Innovation and Technology

EIT is leading European initiative that empowers innovators and entrepreneurs to develop world-class solutions to societal challenges, and create growth and skilled jobs.

- The EIT is the first EU initiative bringing together the three sides of the “knowledge triangle”: business (companies and SMEs), education institutions and research centres.
- The EIT aims to increase the cooperation and integration between higher education, business and research to facilitate the transition from:

**student to
entrepreneur**

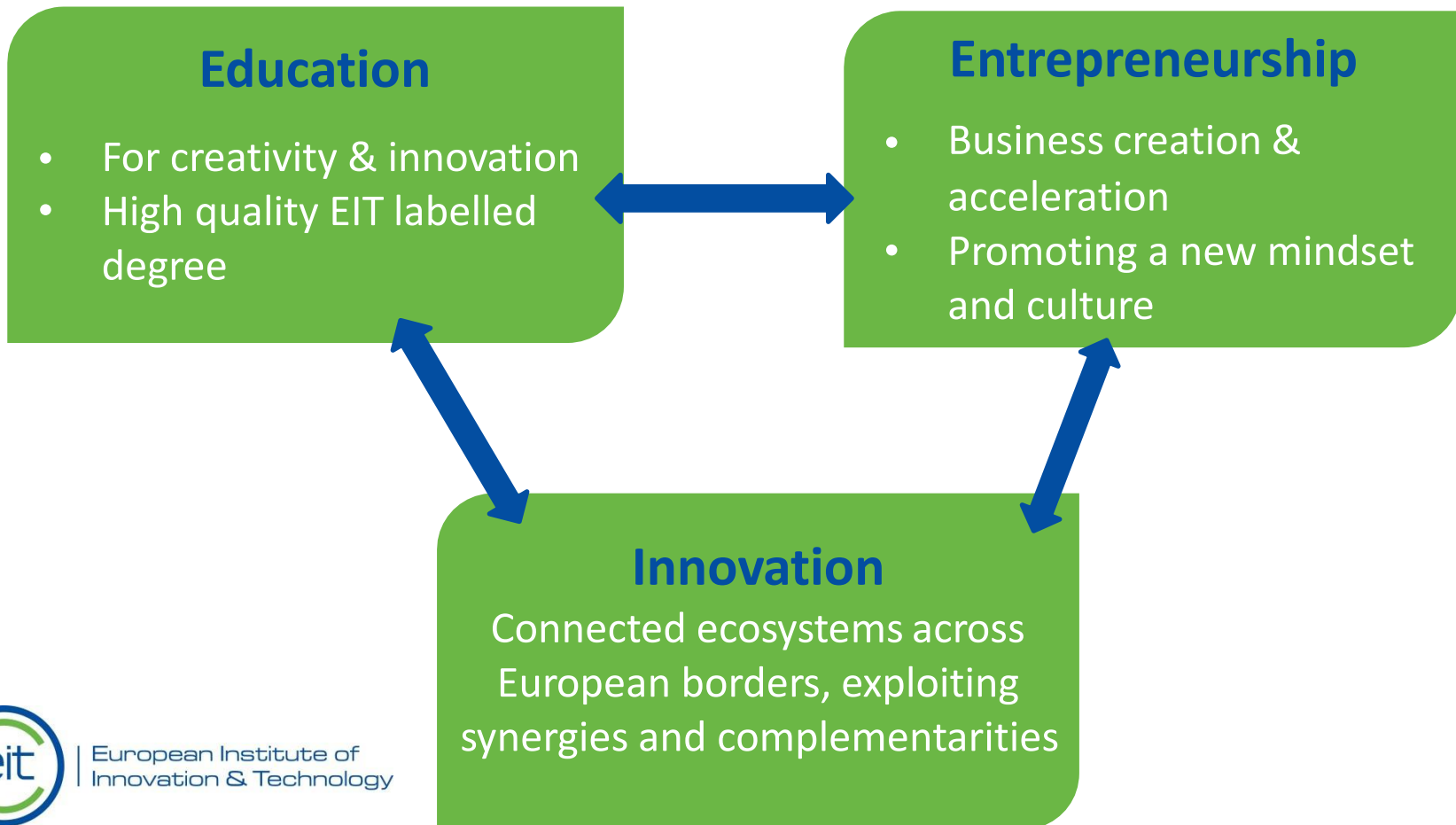
idea to product

lab to customer



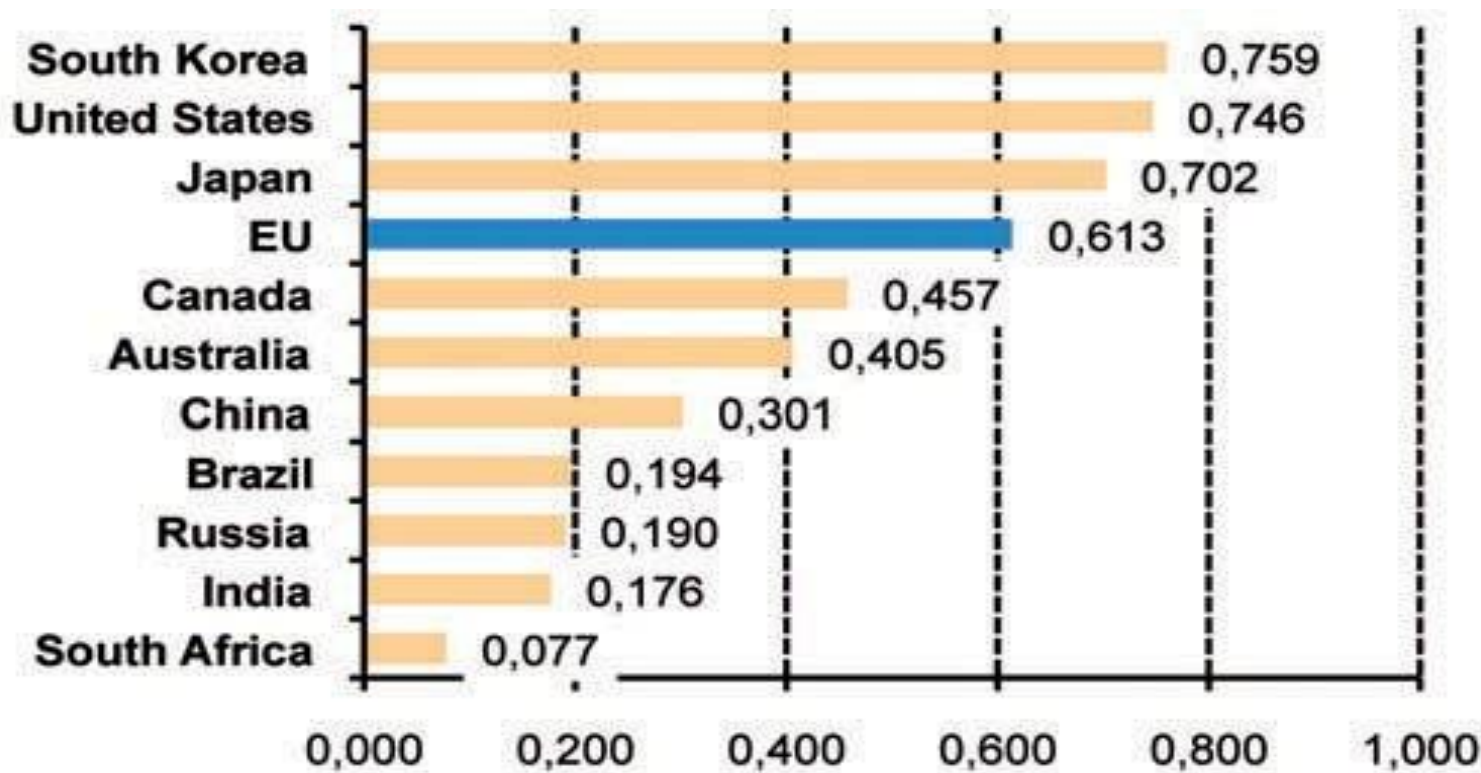
European Institute of Innovation and Technology

A unique offering: what EIT does





How does Europe compare globally?



Global innovation performance

Innovation Union Scoreboard 2015 – European Commission



Knowledge and Innovation Communities

The EIT's KICs are:

- Thematic innovation communities that develop innovative products and services, foster new business , encourage growth and nurture young entrepreneurial talent
- Characterised by a high degree of integration, a long-term perspective, efficient governance, the co-location model and the entrepreneurial culture
- Unique partnerships that increase Europe's capacity for innovation by bringing together leading companies, universities and research labs
- Able to react to new challenges and changing environments in an effective and flexible way
- Driven by a pursuit of excellence





EIT's first 3 KICs – designated in December 2009

Climate-KIC



EIT Digital



KIC InnoEnergy



EIT's next 2 KICs – designated in December 2014

EIT Raw Materials



EIT Health



2016-2020

2016: food4future & added value-manufacturing

2018: urban mobility

Sharing and disseminating EIT good practices



EIT's first 'innovation factories'

Climate-KIC, EIT ICT Labs and KIC InnoEnergy are growing into thriving innovation hubs since 2010

14,155

Attractiveness of education programmes → more than 13 applicants per offered seat



108

of start-ups created



318

of new graduates



146

of knowledge transfers /adoption



404

of business ideas incubated



89

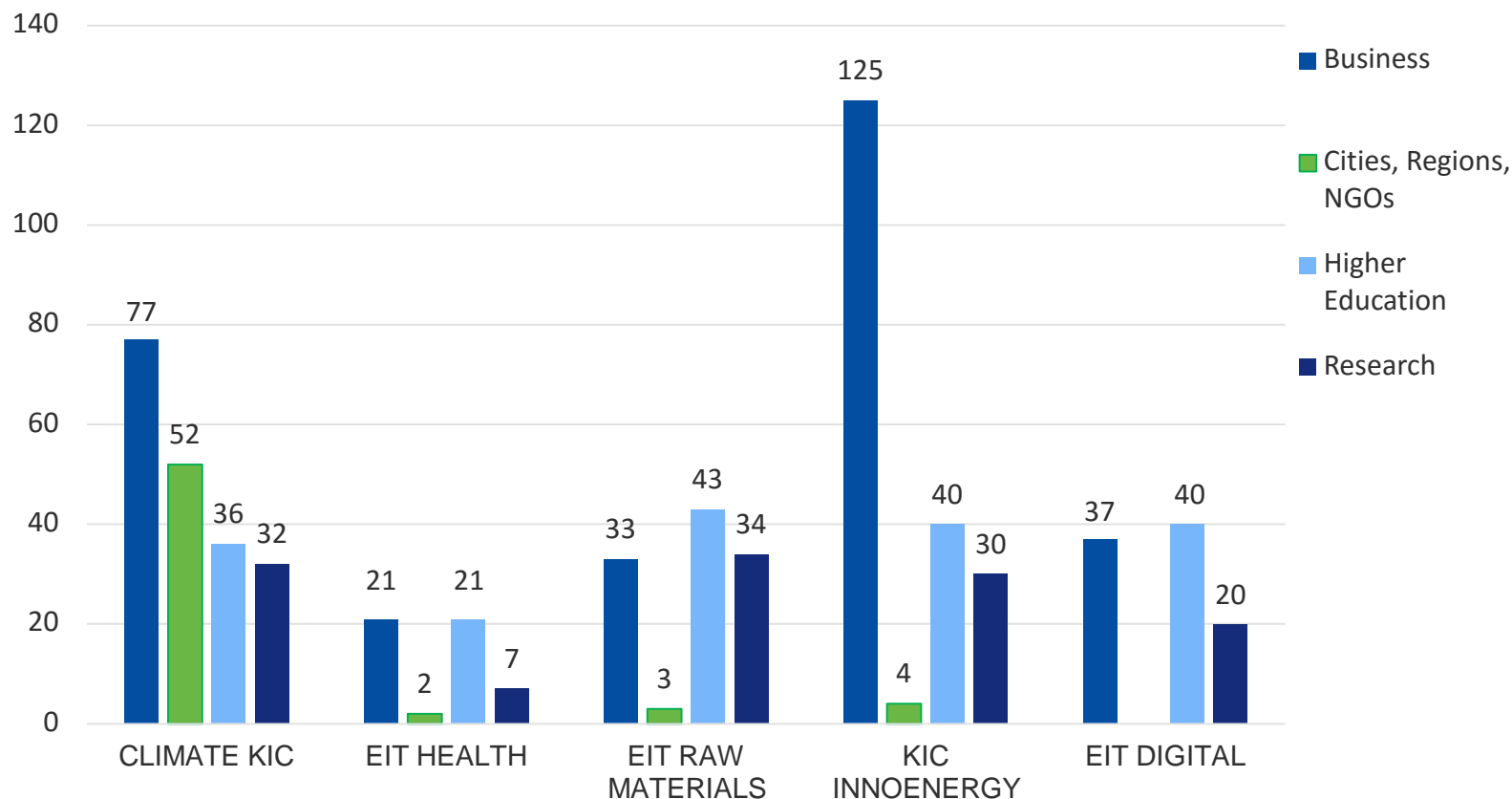
of new or improved products, services & processes launched





Overview of EIT KIC Partners

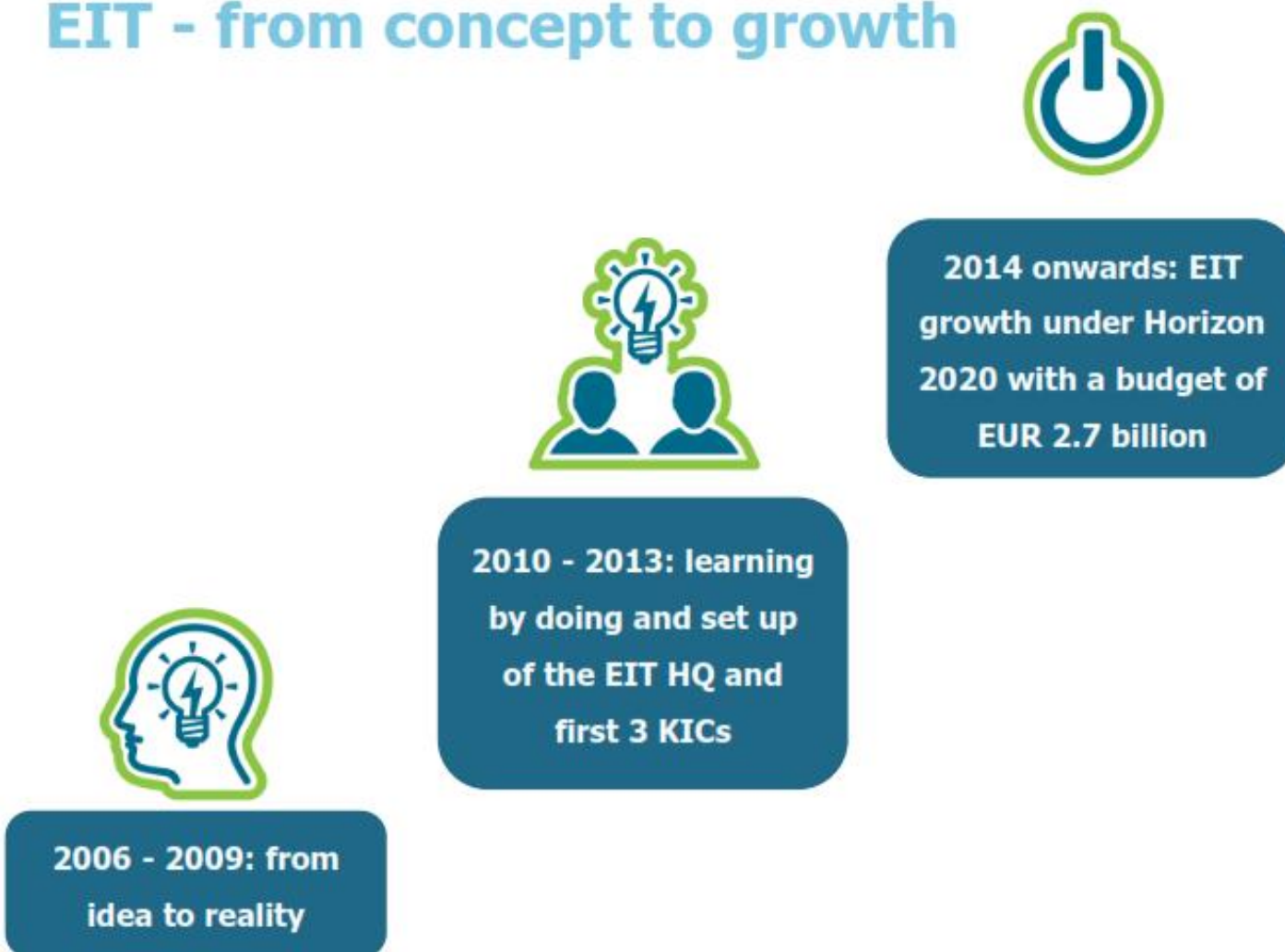
Today, the five EIT KICs bring together more than 760 partners:





KICs and ERDF - Synergies

EIT - from concept to growth





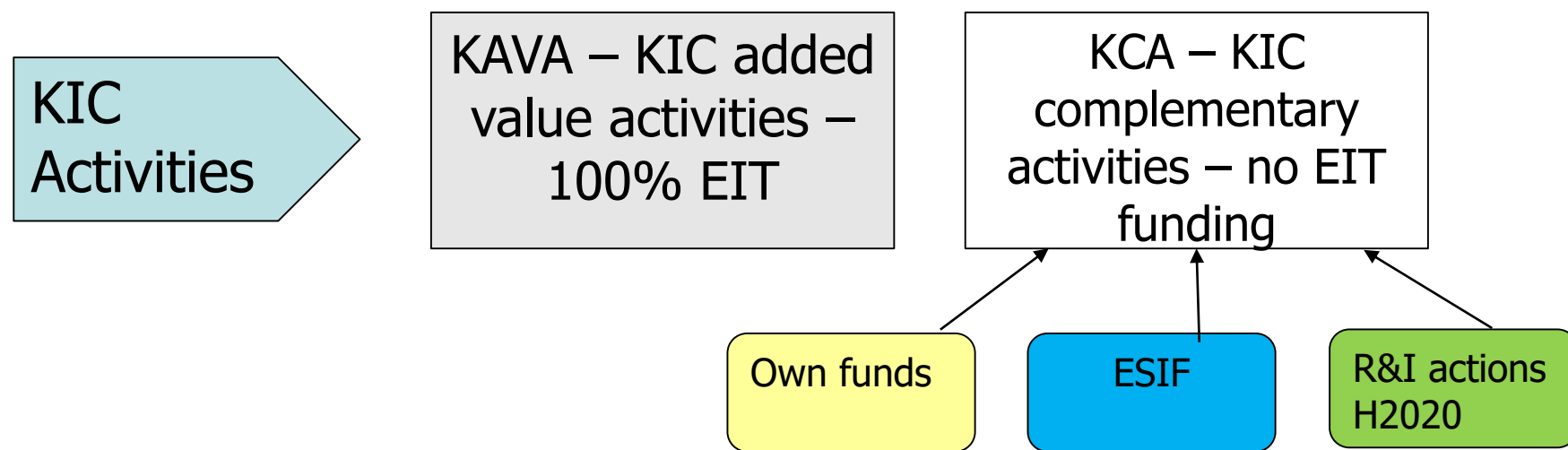
KICs and ERDF - Synergies

KIC participation can help implementing the RIS3 as regards smart specialization priorities for which there is need for complementarities with innovation actors in other regions and MS.

The KIC-model can help improving the cooperation among research, education and business in the region in line with ERDF investment priority



KICs and ERDF - Synergies



Scenario EIT/KIC: Using ESIF for complementing KIC added value activities



Stimulating dialogue and cooperation between the stakeholders involved in ESIF and directly managed Union instruments:

- The inclusion of policy-makers and innovation actors who flagged in their RIS3 strengths and potentials in fields that are relevant for an KIC plan should be promoted in order to fully exploit the innovation potential of Europe for addressing the societal challenges.
- ESIF programmes can take up good practices and project formats that were tested under Horizon 2020, e.g. public procurement of innovative solutions, pre-commercial public procurement, stage-gating for projects (like in the SME instrument), knowledge-triangle settings like in the EIT-KICs, “proof-of-concept” type of actions like under the ERC, social and public sector innovation approaches, etc.



KICs and ERDF – Synergies - Examples

The knowledge triangle in action

Innovation project – Making cities more livable in view of climate change

- Imperial College London
- Aecom
- Alterra – Wageningen UR
- ARCADIS
- Bosch Slabbers
- Deltares
- Ecole des Ponts et Chaussee (ENPC)
- ICCI Ltd.
- Ingenieurgesellschaft Prof Dr Sieker mbH
- Institute of Sustainability
- Sainsbury's
- Studio Exter
- Technische Universitat Berlin (TU Berlin)
- Delft University of Technology (TU Delft)
- Veolia Environnement

A cooperation between **higher education, research organisations, SMEs, a charity and large companies**





The knowledge triangle in action

Innovation project supported by KIC InnoEnergy

Success story. **SolabCool**



Heat for cooling?

Using excess heat for cooling systems seems contradictory, but De Beijer insists it makes perfect sense. "To give you an example, the waste incineration plant in the village of Duiven in the Netherlands supplies 70MW of heat to dwellings and buildings in the winter and only 7MW in the summer," he explains. "Heat sales can be increased substantially if it is sold for cooling in the summer. Without any adjustments, that heat can be transported through the same pipes to the same buildings, and used for cooling."



Join Bulgaria's Cleantech community

If you have any questions, please don't hesitate to contact me at:

mariyana@cleantech.bg

Mariyana Hamanova

Executive Director Cleantech Bulgaria

NCP for EIT in Bulgaria