

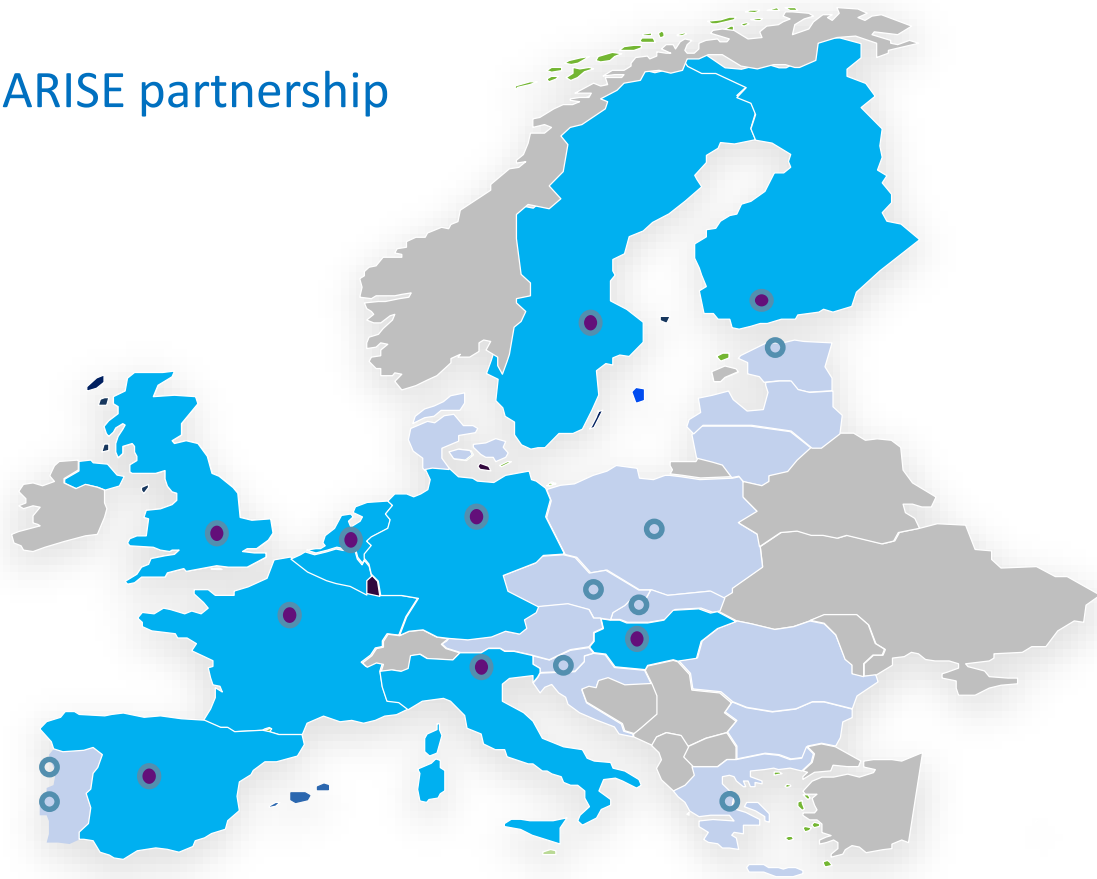


EIT Digital

Ecosystem

>140 partners

Co-location Centres and ARISE partnership



Manufacturing Industry - gaps

- Lack of skills and expertise as main barrier to make new Industry 4.0 applications work
 - skill building (Professional School)
- Difficulty to access international markets and investors as an obstacle to the growth of innovative SMEs
 - Business support
- Interlinking and connections among relevant actors

Skill Building – Professional School

- **What:** Blended learning courses and seminars
- **Target:** professionals, managers, etc., who want to either initiate themselves into digitalisation or deepen their knowledge and keep their skills up-to-date
- **How:** action-based learning, focusing on hands-on workshops rather than traditional classes, case studies and good practices

Available now	Available in 2018
<ul style="list-style-type: none">• Master Variant Complexity• Shaping the Data driven Company• Data Scientist for Smart Energy Systems• Lean Semantic Big Data Integration	<ul style="list-style-type: none">• Mastering Digital Twins• Security and Privacy for Big Data• Shaping the Data Driven Company

Architecting for System Performance

Maximising your high-tech systems' results with TNO-ESI and EIT Digital



Why take this course?

This course addresses the performance attributes of complex high-tech systems. These attributes are generally time, resource and throughput related. The course covers performance architecting from an external (market, business) and internal (design) perspective. The overall goal of the course is to provide System Architects with a thorough understanding and related skills regarding the architecting of business critical system performance attributes. The course starts with industrial examples and discusses practical models and methods that are common to all classes of performance attributes (like modelling and budgeting). Next, the course will focus on time-oriented performance by discussing topics like resource management and scheduling.



Format

Blended Learning



Duration



5 days *(in total)*



2 days *online self-paced training*



3 days *face-to-face coaching session*



Commitment

4 hours per week



Language

English

Support for business

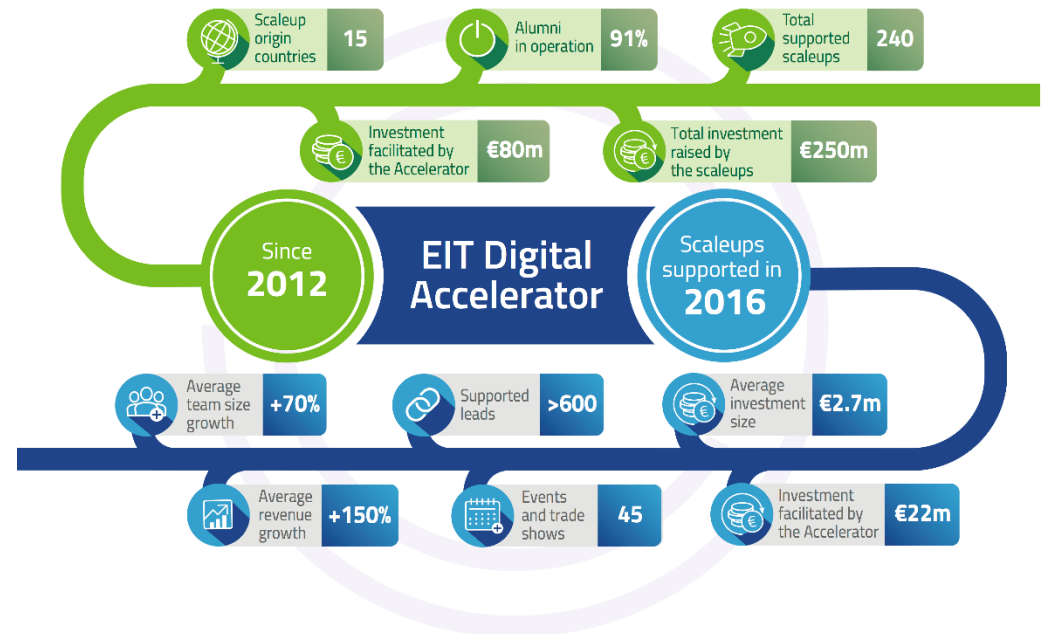
A highly experienced team of 40+ business developers and fund-raising experts operating from 9 European countries

Access to Market (A2M)

Secure Customers

Access to Finance (A2F)

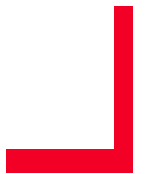
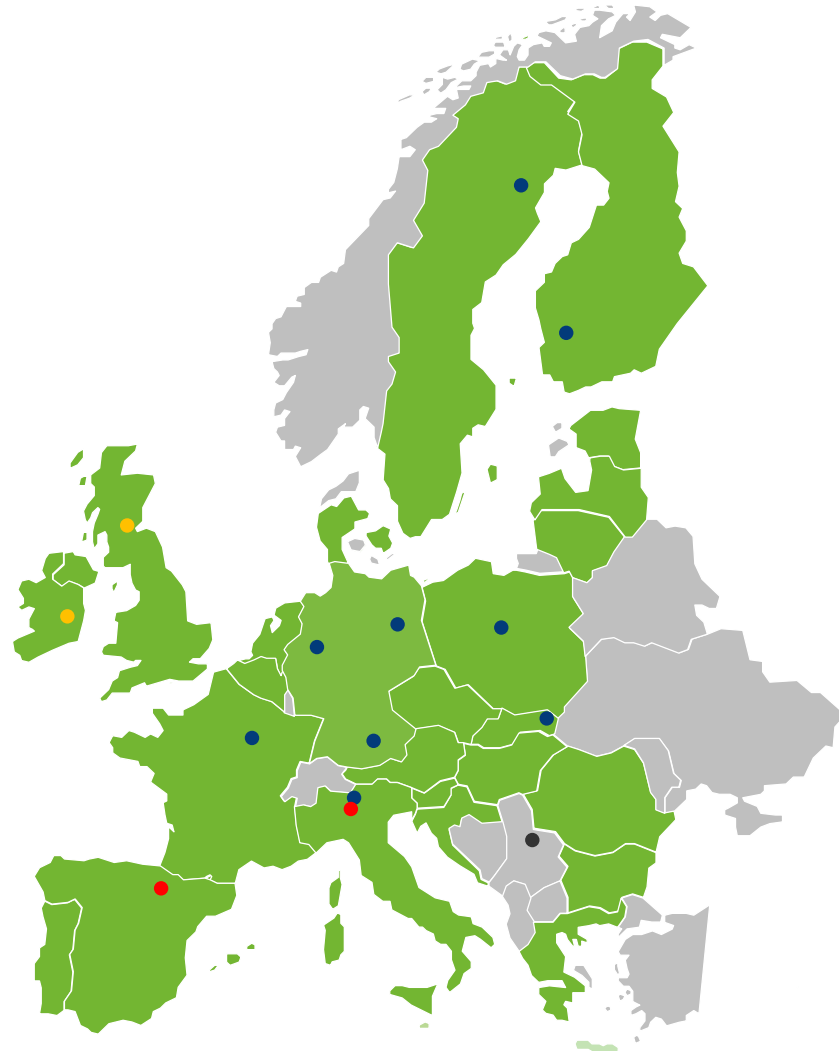
Raise Funds



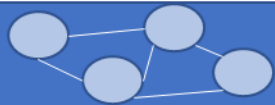
Interlinking and connection through the **MIDIH** project

- **9 CPS/IOT Competence Centers**
- **2 Teaching Factories**
- **2 Regional Manufacturing Digital Innovation Hubs**

- 3 Pan –European Digital Innovation Hubs
 - **EIT Digital, IDS, FF**
- 3 Industrial case-study providers
 - **CR FIAT, IDS (TK), NECO**
- 2 Open source digital platform providers
 - **Atos, Engineering**
- 2 IOT specialized SMEs
 - **NISSATECH and HOPU**



MIDIH Innovation Boosters: the Network



FIWARE Innovation Hubs

MIDIH pan-EU DIH Platform for CPS/IOT Open Source Software, @FIWARE Foundation

Competencies Experiments Technology



IDS Experiments Network

MIDIH pan-EU DIH Platform for Data Value Chain Sovereignty, @Industrial Data Space

Competencies Experiments Technology



EIT DIGITAL Nodes, Co-location Centers, Satellites

MIDIH pan-EU DIH Platform & Network of Competence Centers, @EIT DIGITAL

Competencies Experiments Technology Market Knowledge

Teaching
Factory 1

CC1

CC2

CC3

CC4

CC5

CC6

CC7

CC8

CC9

Teaching
Factory 2

MIDIH Regional Manufacturing DIH Platform
for **Scotland and Ireland**

Competencies Experiments Technology

Market

Knowledge

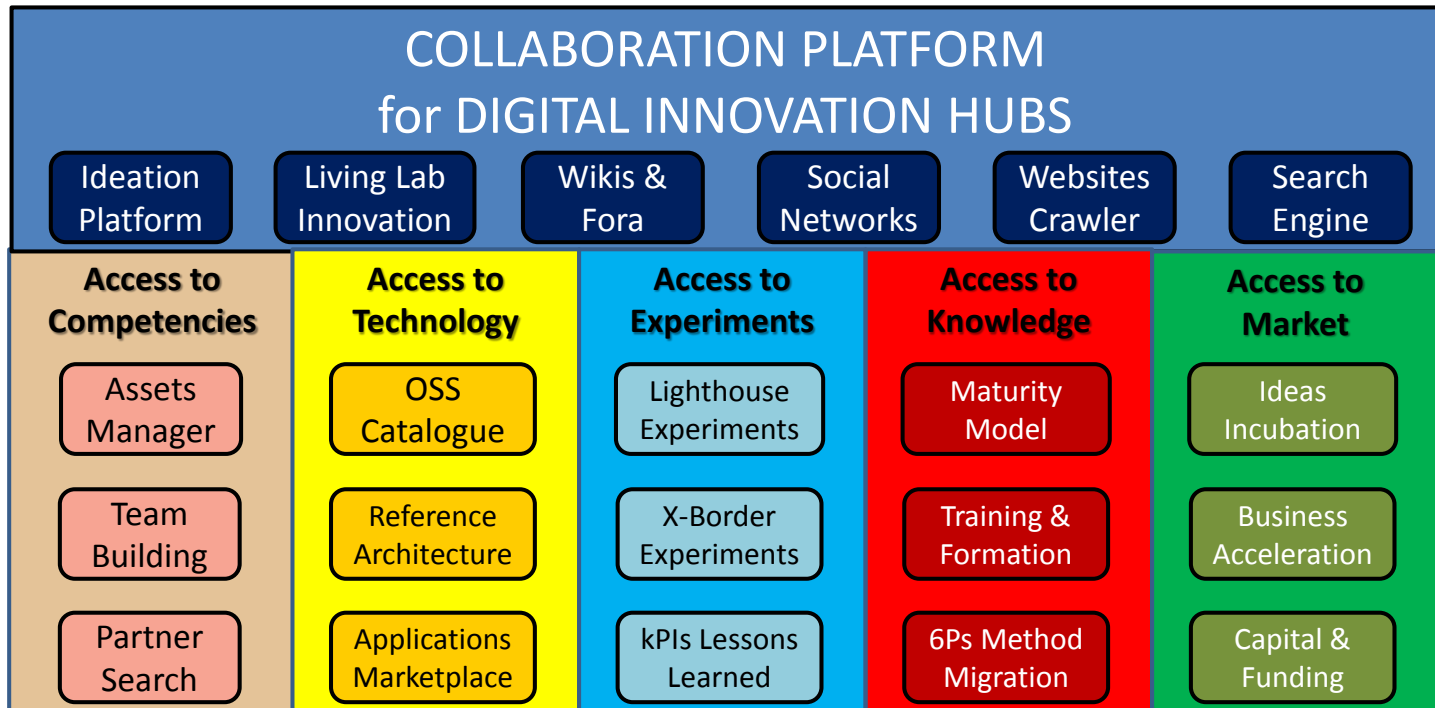
I4MS Phase II Regional Manufacturing DIH in
CPS/IOT & Vanguard ESM Regions Platform

Competencies Experiments Technology

Market

Knowledge

MIDIH Service Platform





eitdigital.eu

fabio.pianesi@eitdigital.eu