

# Digital Innovation Hubs & Smart Specialisation

EIT House (Brussels)  
28 Nov 2017

**Guidance material  
to prepare for  
Workshop**

- **LOMBARDY / AFIL – Lombardy Intelligent Factory Association**
  - AFIL is the Lombardy Cluster focused on Advanced Manufacturing.
  - Non profit, private association funded in 2013 by:
    - Politecnico di Milano
    - ITIA-CNR
    - Consorzio INTELLIMECH
    - Innovhub
  - **Contacts:**
    - Cluster Manager: Alessandro Marini
    - Support/I4.0 area coordinator: Marzia Morgantini

- **Present your regions Smart Specialisation or regional innovation support system**
- **Who is responsible for the strategy and how is it developed and implemented?**
- **Present briefly the socio economic fabric**

## Lombardy in a nutshell



**Inhabitants:** about 10.008.349ML  
(16,5% of the Italian population)

**Population density:** 419,3 Inhab/km<sup>2</sup>

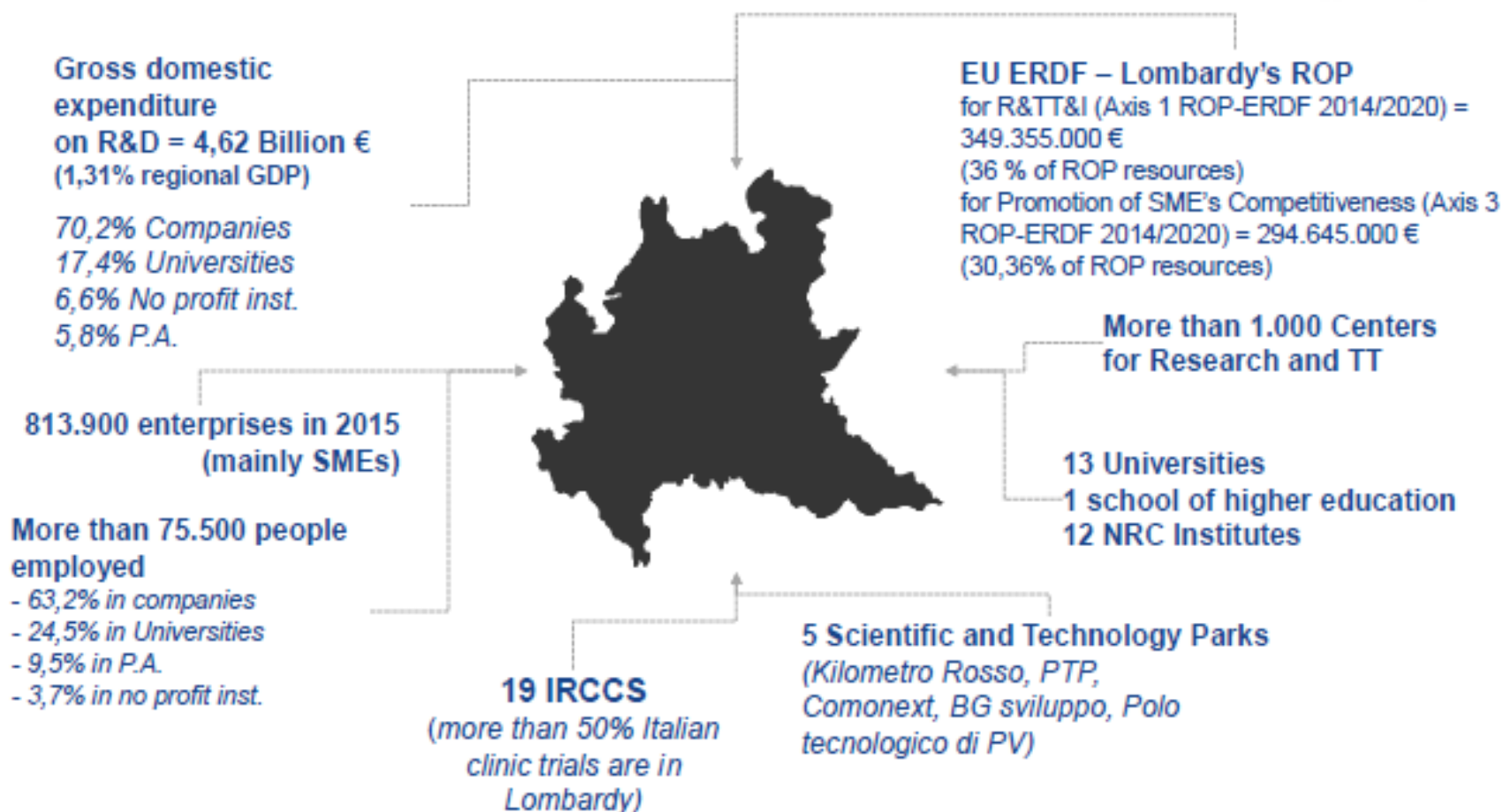
**GDP:** €350.027ML (20,7% of Italian GDP  
and the 4° region in Europe)

**813.900 enterprises in 2015** (mainly  
SMEs)

**4.256.000 employees**

**Number of total patent applications on  
enabling technologies = 1.120,4 (2013).**  
(15,9% in ICT; 7,2% MedicalTech.; 6,5%  
Pharma; 3% Biotech; 0,2% Nanotech)

## Lombardy R&I ecosystem



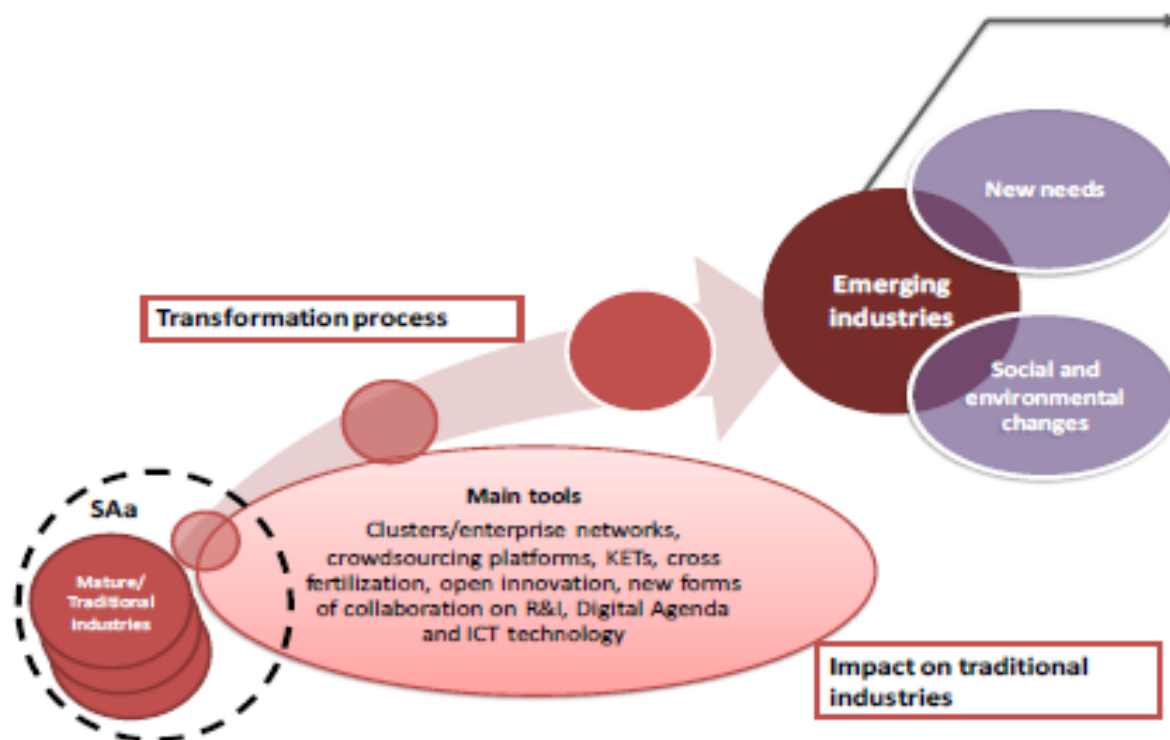


European  
Commission

# Introduction

## Lombardy S3

### The challenge path towards Emerging Industries



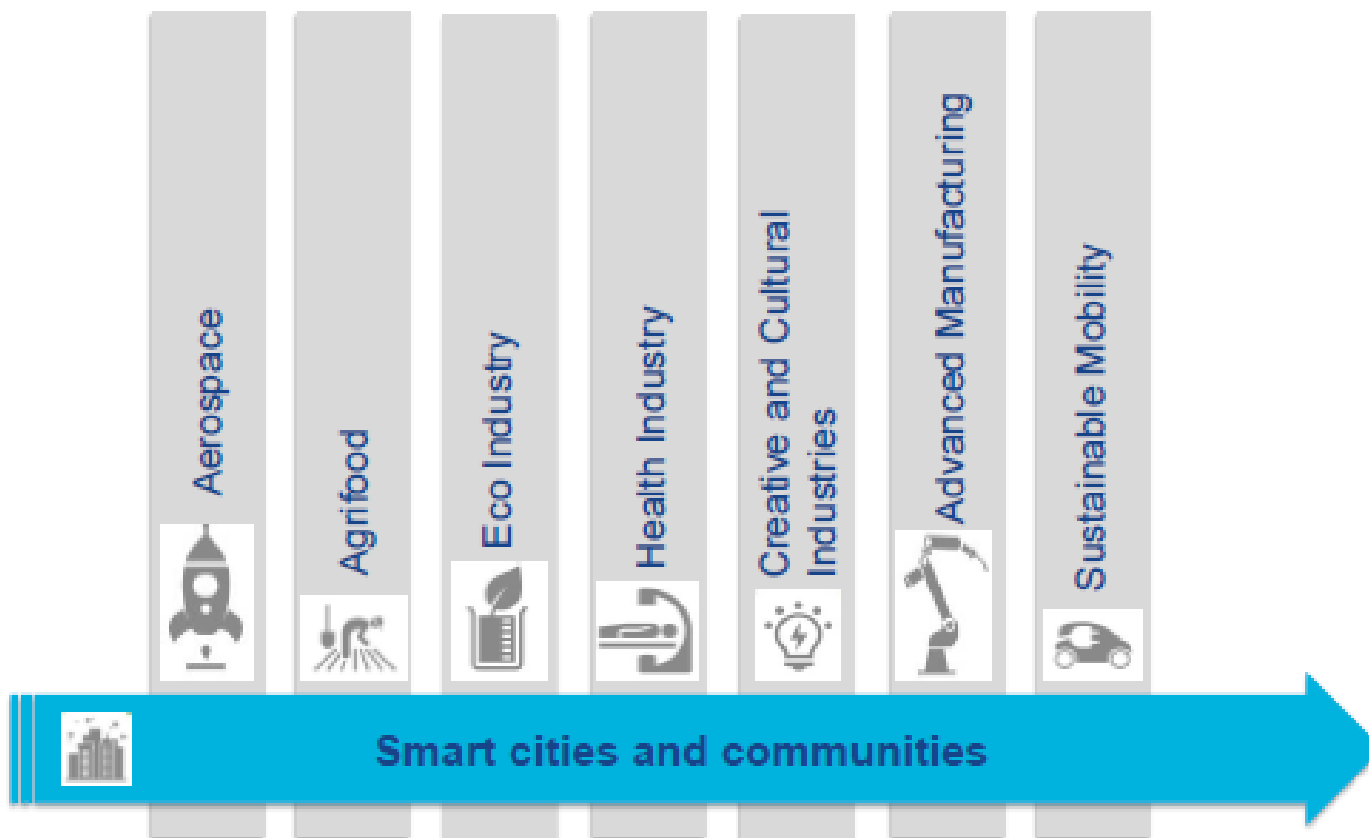
high growth level and high market potential (...new market needs. enabling technologies cross fertilization phenomenas...)



to foster the (statement)/ achievement of new emerging industries both evolution of existing sectors and creation of new sectors



## Lombardy S3 Smart Specialization areas



## Lombardy S3 Smart Specialization supporting tools

### 2 MAIN IMPLEMENTATION LINES

**Policy Mix**, “direct” measures to support companies in their life-cycle phase

tools to support establishment of **Enabling Environments** to facilitate the evolution towards emerging industries  
(*Clusters, Open Innovation*)

### CROSS-CUT ACTIVITIES

(through Lombardy Region Delegation to the EU: e.g. European networks & initiatives such as Vanguard Initiative, NEREUS, ECRN, Four Motors for Europe...)



## Lombardy S3 The enabling environment



**9 structured aggregations**  
of companies, universities,  
research bodies and other  
public/private  
(almost 700 members)

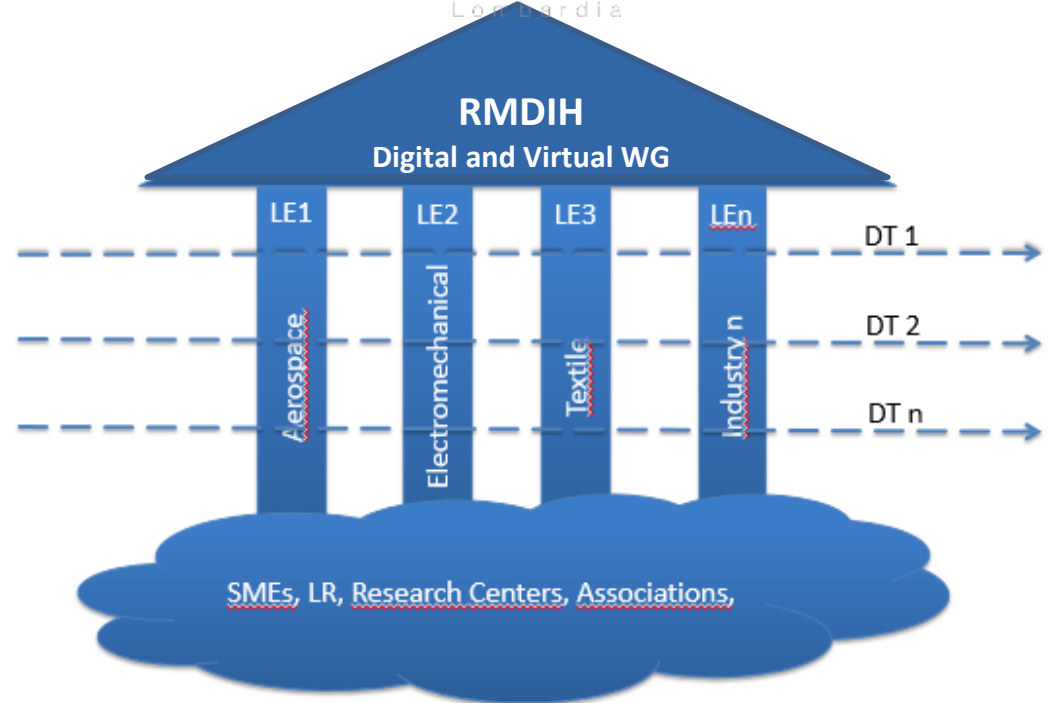


## BE in CPPS

Regional Manufacturing Digital Innovation Hubs  
— LOMBARDY —

**Mission:** foster connections between all key relevant regional stakeholders (competence centers, companies, users and suppliers, technology experts and investors) able to boost Industry 4.0 revolution and facilitating Lombardy SMEs access to EU-wide markets.

**Vision:** increase employment and competitiveness of Lombardy manufacturing industry.



## Stakeholders involved in the DIH

### OVERALL INVOLVED STAKEHOLDERS

TOTAL	Jan '17	June '17
<b>26</b>	<b>26</b>	<b>50</b>
Manufacturing Companies	9	16
Solution Providers	10	18
Research & Universities	4	5
Official Institutions	2	3
Others	1	8



### SMEs

TOTAL	12	26
Manufacturing Industries	4	11
Solution Providers	7	12
Others	1	3

### COMPETENCE CENTERS

KNOWLEDGE CC	5	5
TECHNOLOGY CC	5	11
EXPERIMENTAL CC	3	4

### D&V PILOT PLANTS

INDUSTRIAL PILOTS	2	2
INNOVATION PILOTS	1	2
DIDACTIC PILOTS	0	0



## Services provided

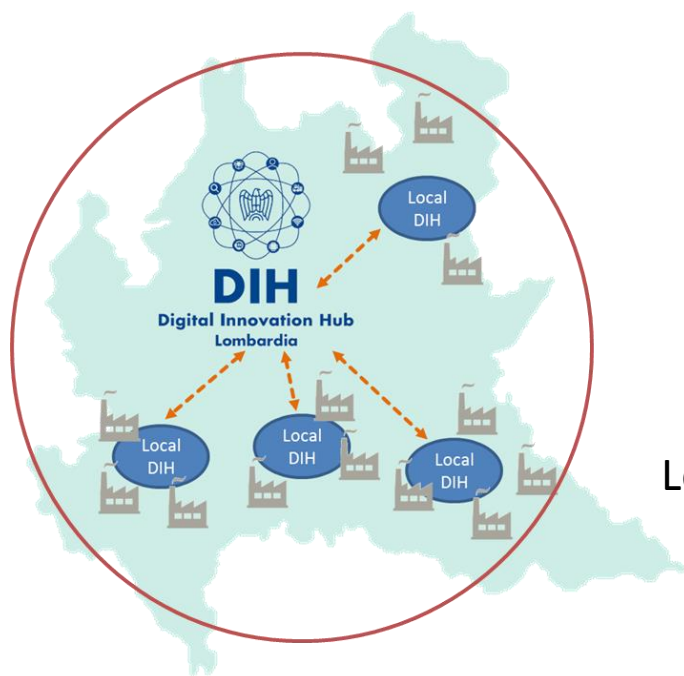
Services	Service Providers	Customers
Workshops/awareness events	AFIL, Competence centers, industrial associations, science and technology parks	Manufacturing companies
Training and education	Competence centers, science and technology parks, industrial associations	Manufacturing companies, solution providers
Interactive demonstrations	Competence centers, experimental facilities/pilots	Manufacturing companies, solution providers
Matchmaking/Ecosystem building	AFIL, industrial associations	Competence centers, manufacturing companies, solution providers
Accessing/overview on private and public funding	AFIL, authorities, competence centers	Manufacturing companies, solution providers
Consultancy on technology implementation	Competence centers	Manufacturing companies, solution providers
Feasibility studies	Competence centers	Manufacturing companies, solution providers, industrial associations, authorities

- **Has it participated in RIS3 development? How? Is it providing feedback to the RIS3 in a continuous way?**
  - AFIL has been officially recognized by Lombardy Region as a counterpart for the effective implementation of RIS3, related to Advanced Manufacturing.
  - Thank to its Working Groups, AFIL periodically provides S3 Strategy updates to Lombardy Region mainly concerning Advanced Manufacturing. Indeed, the cluster established a Roadmapping Group that gathers the input from AFIL members and translates them into guidelines for the update of RIS3.

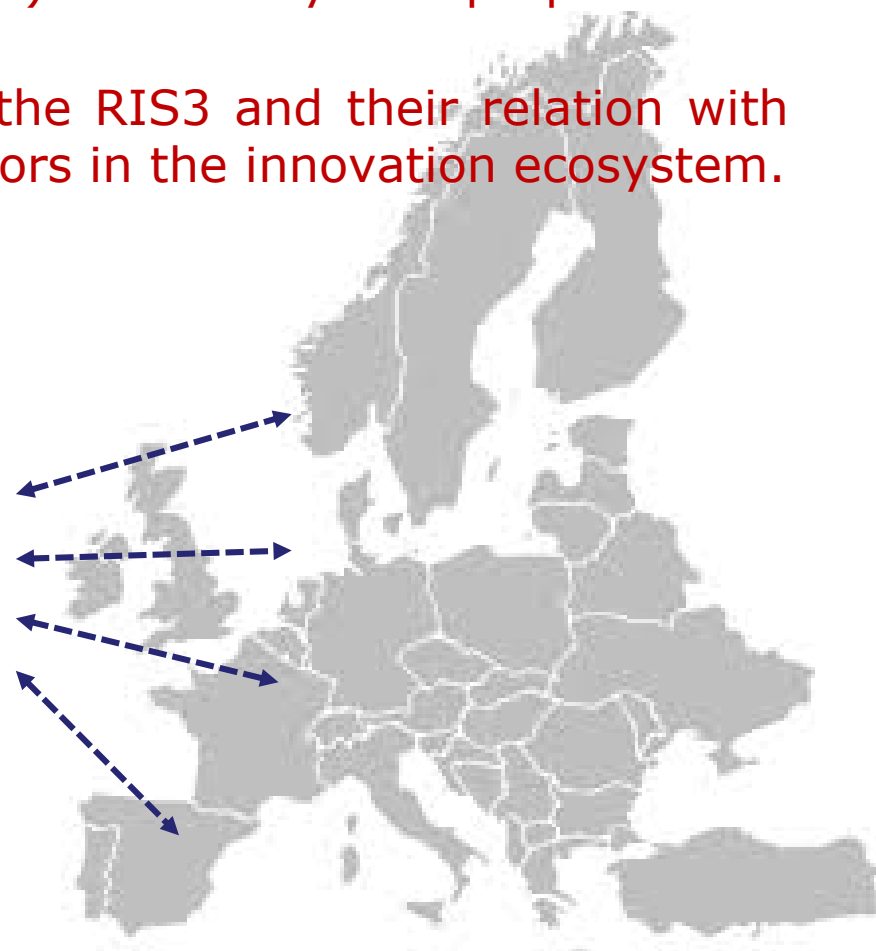
- **Is it implementing the RIS3 or part of it?**
  - Digitalization is a key topic in Advanced manufacturing specialization area and it represents the way to increase the regional economic development and the employment rate. AFIL is putting in place actions to favor the usage and diffusion of ICT technologies to foster innovation in companies.
  - In particular, the cluster is supporting initiatives with direct or indirect impact on SMEs.

- What are the main challenges and good practices:
  - in this interaction?
  - the organisation of the DIH, so that it connects to regional needs and strategy?
  - in providing DIH services that connect to RIS3

- What are the main challenges and good practices:
  - **DIHs vs. RM DIH:** it is necessary to align the European scheme of DIHs (eg. I4MS, SAE) with the system proposed by the Italian Ministry.
  - **Clarify the role of DIHs** in the RIS3 and their relation with all the already existing key actors in the innovation ecosystem.



Lombardy  
RM DIH





- What are the main challenges and good practices:
  - **Different actors implies fragmented funding.** Funding opportunities coming from regional and EU level do not support the same DIH scheme.
  - **Funding has to be addressed properly.** DIHs need funding to operate the network, but most of the amount should be allocated **to companies** so that they can access the services offered for the adoption and exploitation of enabling technologies (i.e. INNOSUP, Open Calls, ...).
- **Clarify the eligibility of DIHs:** need to define criteria for being entitled and receive funding.

- **How is the DIH financed?**
- **How does it connect to services provided?**
  - AFIL is not directly financed as DIH.
  - The cluster leverages on both private financing (members' fees) and public financing (H2020, INTERREG).
  - In order to deal with the lack of funding, the association is looking for calls that offer financial support both to the DIHs and end users (i.e. INNOSUP, Open Calls, ...).
  - If the above-mentioned scheme succeed, companies themselves, will continue financing the association through the members' fees recognising the concrete benefit in exploiting the services offered by the network.
- **How are synergies achieved?**

- **Which other regions and Hubs do you collaborate with?**
  - EU projects allow the collaboration between AFIL and more than 20 EU Regions.
  - Baden-Wurttemberg, Catalonia, Auvergne-Rhone Alpes, Norte, are the most active regions in the topic of DIHs.
- **On what are you collaborating?**
  - Networking and ecosystem building
  - Specific tool/services addressed to SMEs, Intermediaries and Policy makers
- **How is this being financed?**
  - AFIL private and public financing
- **On what would you like to collaborate with other regions?**
  - Fostering interregional B2B collaborations.
  - Enhancing companies access to a pan European network of DIHs, that have several different specializations.